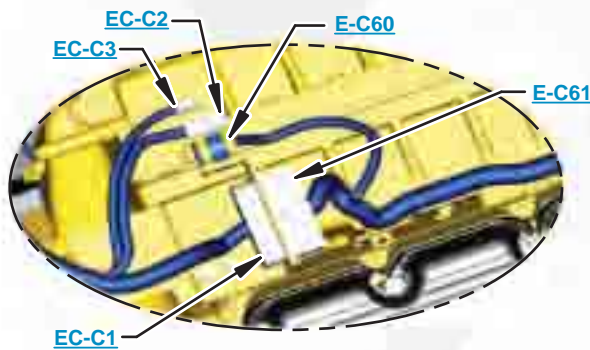


This document is best viewed at a screen resolution of 1024 X 768.

To set your screen resolution do the following:
RIGHT CLICK on the **DESKTOP**.
 Select **PROPERTIES**.
CLICK the **SETTINGS TAB**.
MOVE THE SLIDER under **SCREEN RESOLUTION** until it shows **1024 X 768**.
CLICK OK to apply the resolution.

The Bookmarks panel will allow you to quickly navigate to points of interest.



Click on any text that is BLUE and underlined. These are hyperlinks that can be used to navigate the schematic and machine views.

VIEW ALL CALLOUTS

When only one callout is showing on a machine view this button will make all of the callouts visible. This button is located in the top right corner of every machine view page.

HOTKEYS (Keyboard Shortcuts)		
	FUNCTION	KEYS
	Zoom In	"CTRL" / "+"
	Zoom Out	"CTRL" / "-"
	Fit to Page	"CTRL" / "0" (zero)
	Hand Tool	"SPACEBAR" (hold down)
	Find	"CTRL" / "F"



www.manuals-free.com

Schematic

330D and 336D Excavator
336D MHPU
Hydraulic System - Attachment

330D:

GBC1-UP
NBD1-UP
GGE1-UP
THJ1-UP
C5K1-UP
E4K1-UP
H3K1-UP
L2K1-UP
LEM1-UP

330D:

LRM1-UP
ERN1-UP
JLP1-UP
MWP1-UP
RAS1-UP
EDX1-UP
MEY1-UP
T2Y1-UP

336D:

J2F1-UP
PRF1-UP
W3K1-UP
WRK1-UP
KKT1-UP
PGW1-UP

336D MHPU:

M3M1-UP
M3N1-UP

www.manuals-free.com

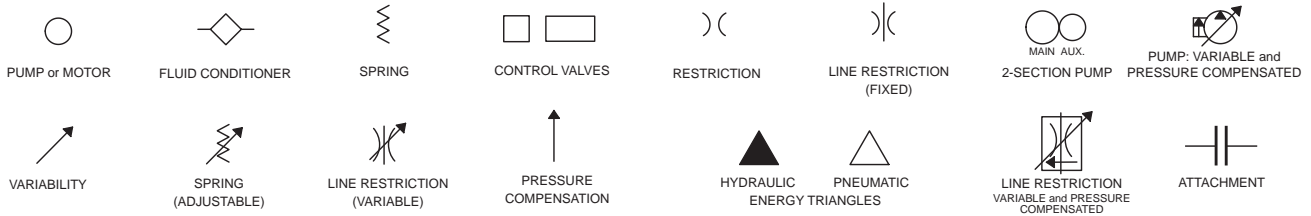
Reverse Fan

Description	Part Number	Machine Location	Schematic Location
Accumulator Gp - Pilot Manifold	164-6981	1	B-4
Cylinder Gp - Boom	Note A	2	F-5
Cylinder Gp - Bucket	Note A	3	E-5
Cylinder Gp - Stick	Note A	4	F-5
Filter Gp - Case Drain	126-2075	5	A-4
Filter Gp - Pilot Hydraulic	158-8987	6	A-4
Filter Gp - Return Oil	188-4140	7	B-6
Motor Gp - Left Travel	271-6376	9	F-3
Motor Gp - Right Travel	271-6376	10	F-2
Motor Gp - Swing	200-3373	11	F-7
Pump Gp - Hydraulic Fan	259-0815	12	B-3
Pump Gp - Main and Pilot	283-6116	13	A-2
Sensor As - Left Pump Press.	221-8859	14	A-2
Sensor As - Right Pump Press.	221-8859	15	B-2
Switch As - Left Travel Pilot	167-3466	16	D-7
Switch As - Pilot Pressure	167-3466	17	A-7
Switch As - Right Travel Pilot	167-3466	18	D-6
Swivel Gp	234-4440	19	E-3
Tank As - Hydraulic Oil	239-1661	20	A-5
Valve Gp - Check, Cooler Bypass	190-7745	21	C-7
Valve Gp - Left Travel Counterbalance	204-2819	29	E-3
Valve Gp - Load Control Boom Cylinder	255-5683	30	D-1
Valve Gp - Load Control Stick Cylinder	255-5680	31	D-5
Valve Gp - Main Control	285-1536	32	C-2
Valve Gp - Pilot Manifold	215-5037	34	B-5
Valve Gp - Pilot, Bucket and Boom	270-5952	35	B-6
Valve Gp - Pilot, Stick and Swing	270-5951	36	B-7
Valve Gp - Press. Red. Boom/ Swing	232-4102	37	B-4
Valve Gp - Right Travel Counterbalance	204-2819	40	E-2
Valve Gp - Shuttle	185-0462	41	A-7
Valve Gp - Shuttle	259-7732	42	B-4
Valve Gp - Swing Cushion	158-9085	43	E-7
Valve Gp - Travel Pilot	270-5947	44	D-6
Attachments			
Motor Gp - Hydraulic Fan	242-6776	50	C-6
Valve Gp - Control, Reverse Flow	234-4624	51	C-6
Valve Gp - Solenoid, Reversing Pilot	242-6880	52	C-6

Note A: Refer to service manual for specific cylinder information.

Tap Number	Description	Schematic Location
<u>AA</u>	Left Pump Delivery Pressure	<u>A-1</u>
<u>BB</u>	Right Pump Delivery Pressure	<u>B-1</u>
<u>CC</u>	Pilot Pump Delivery Pressure	<u>A-4</u>
<u>OO</u>	Pump Power Shift Pressure	<u>B-1</u>
<u>SOS</u>	Hydraulic Oil Sampling Port	<u>A-4</u>

BASIC COMPONENT SYMBOLS



VALVE ENVELOPES

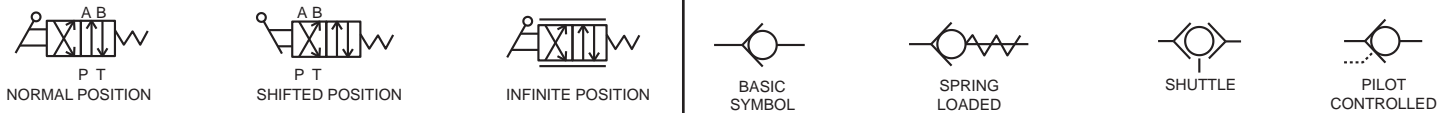
VALVES

VALVE PORTS



CONTROL VALVES

CHECK VALVES

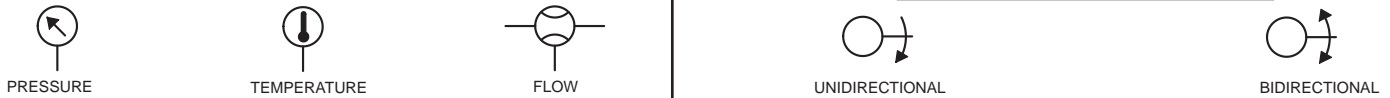


FLUID STORAGE RESERVOIRS



MEASUREMENT

ROTATING SHAFTS



COMBINATION CONTROLS



MANUAL CONTROL SYMBOLS



RELEASED PRESSURE

PILOT CONTROL SYMBOLS

REMOTE SUPPLY PRESSURE



ACCUMULATORS

CROSSING AND JOINING LINES

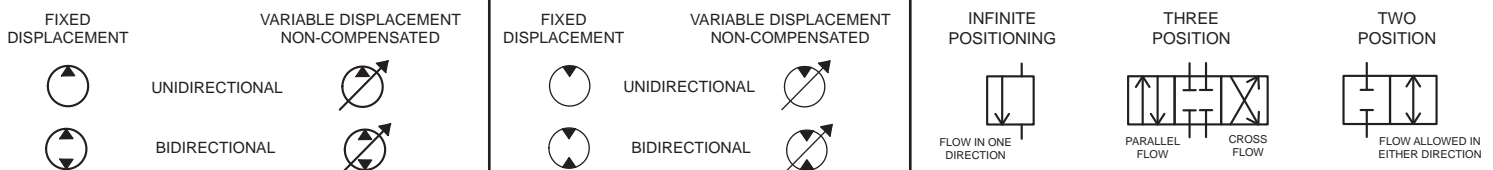
HYDRAULIC AND PNEUMATIC CYLINDERS



HYDRAULIC PUMPS

HYDRAULIC MOTORS

INTERNAL PASSAGEWAYS



Hydraulic Symbols (Electrical)



Transducer
(Fluid)



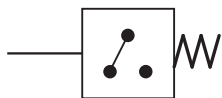
Transducer
(Gas / Air)



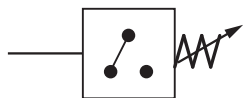
Generator



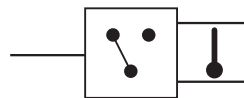
Electric Motor



Pressure Switch



Pressure Switch
(Adjustable)

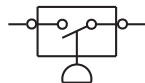


Temperature Switch

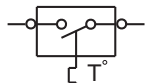


Electrical Wire

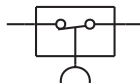
Electrical Symbols (Electrical)



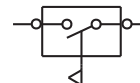
Pressure
Symbol



Temperature
Symbol



Level
Symbol

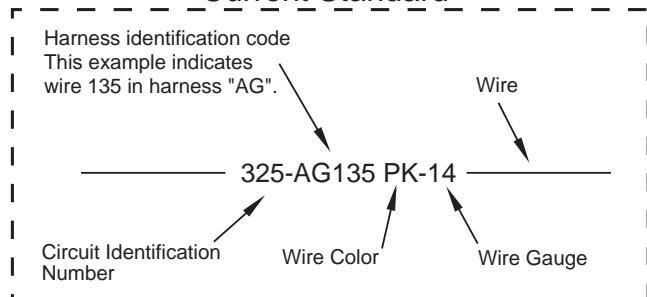


Flow
Symbol

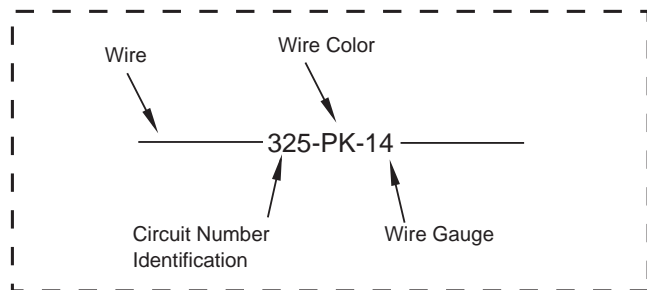
Wire Number Identification Codes

Electrical Schematic Example

Current Standard

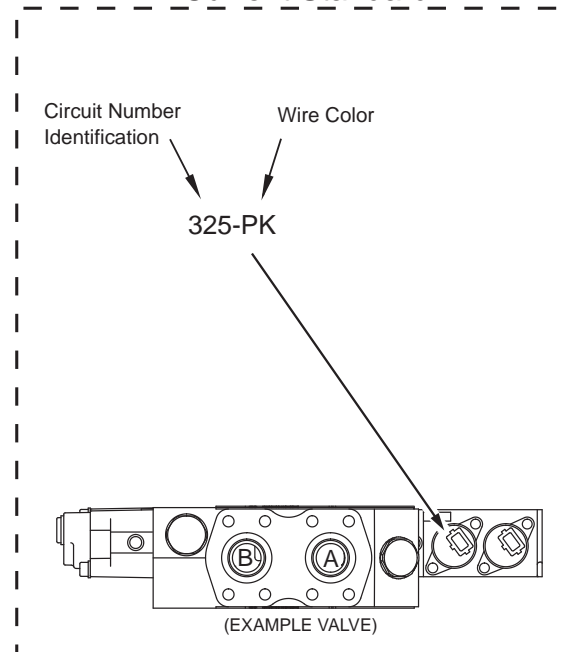


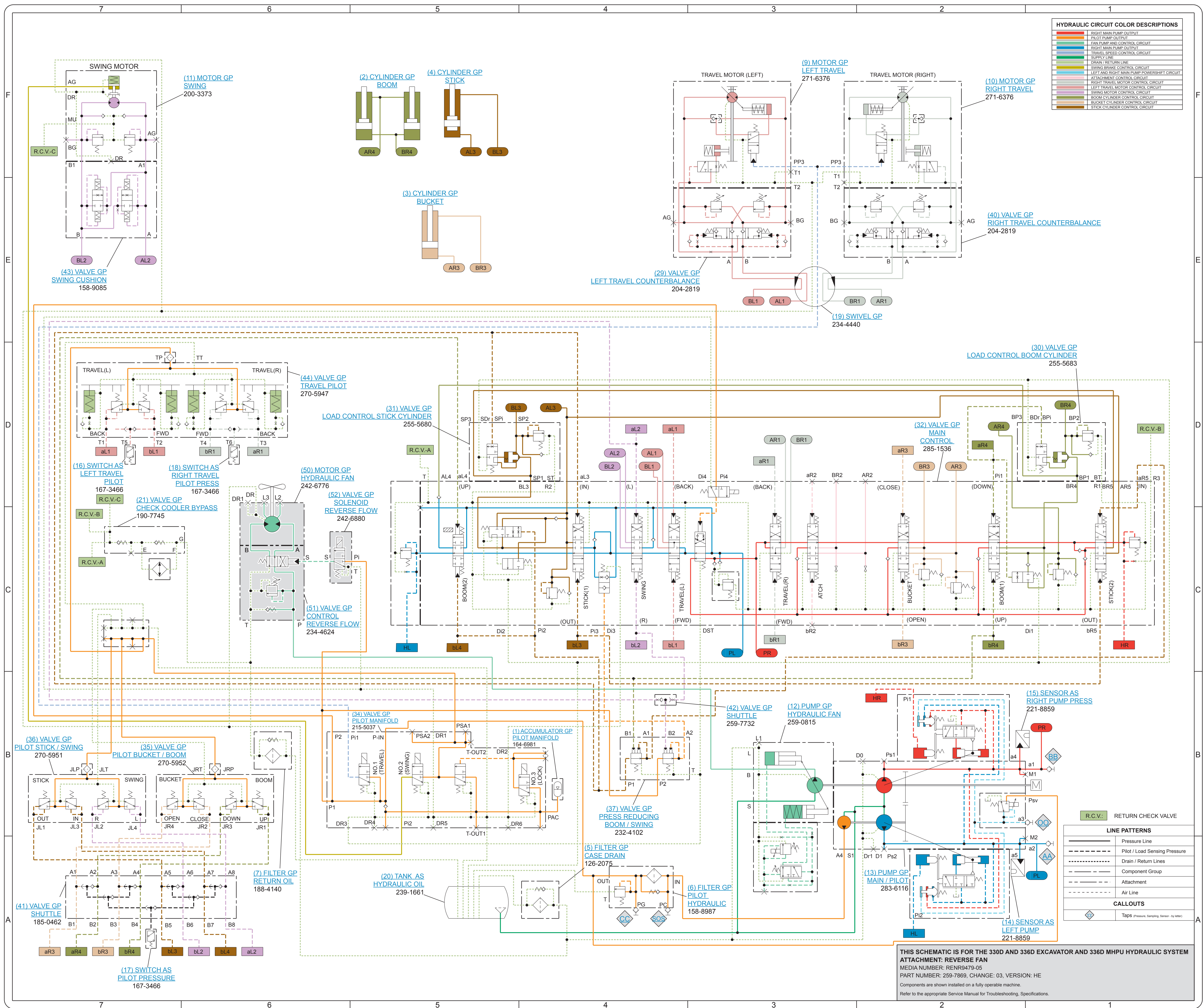
Previous Standard

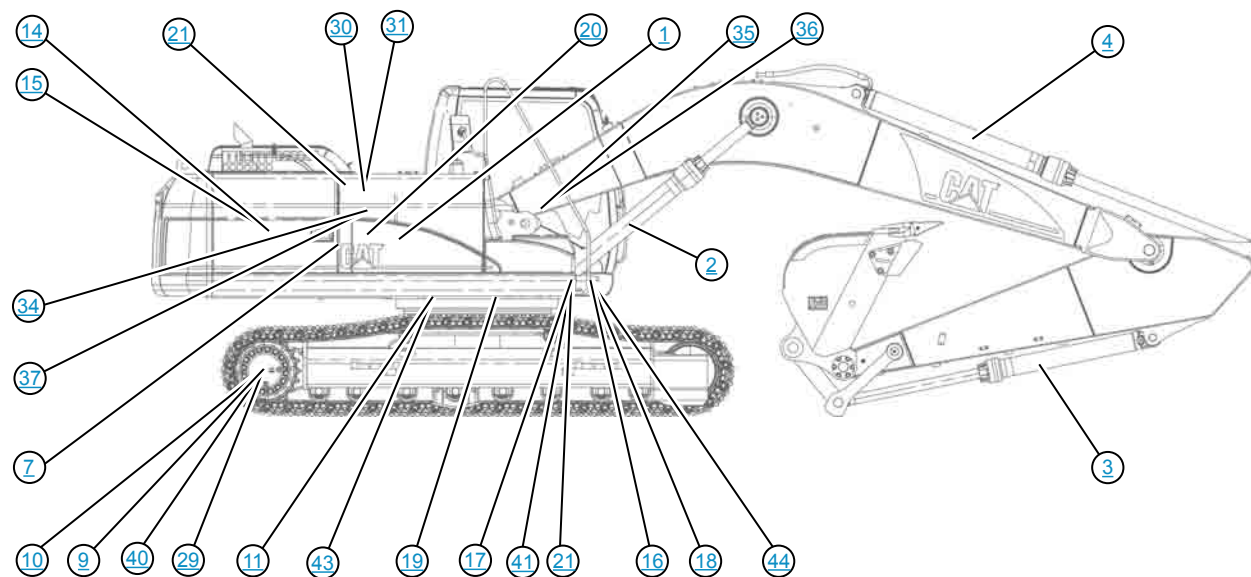
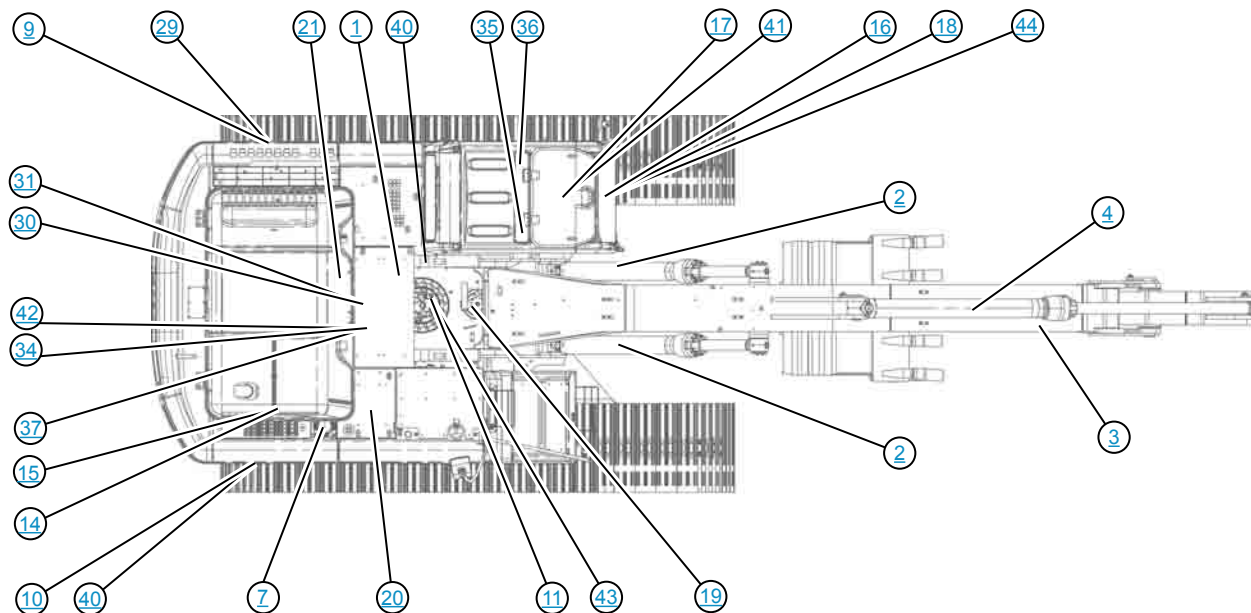


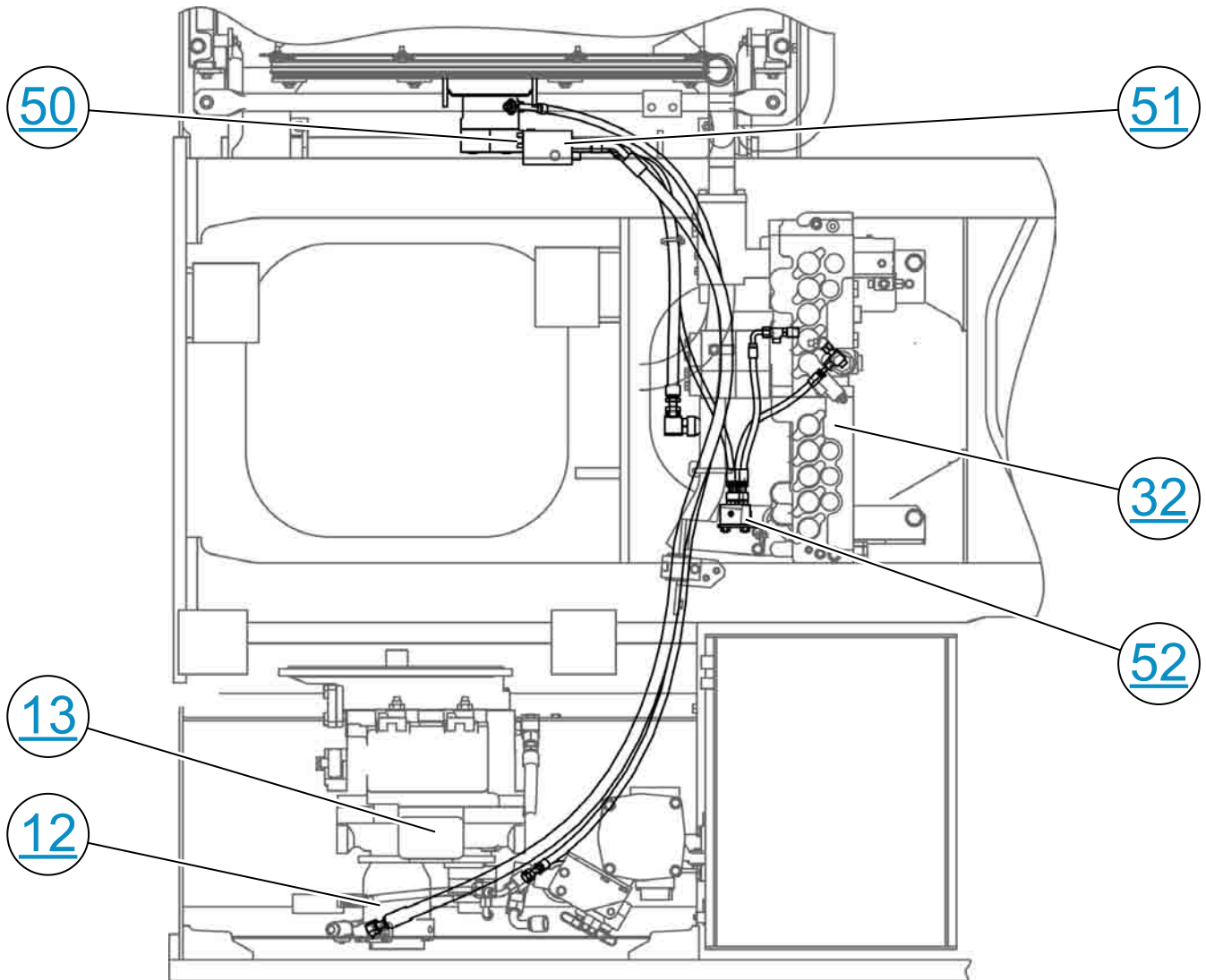
Hydraulic Schematic Example

Current Standard

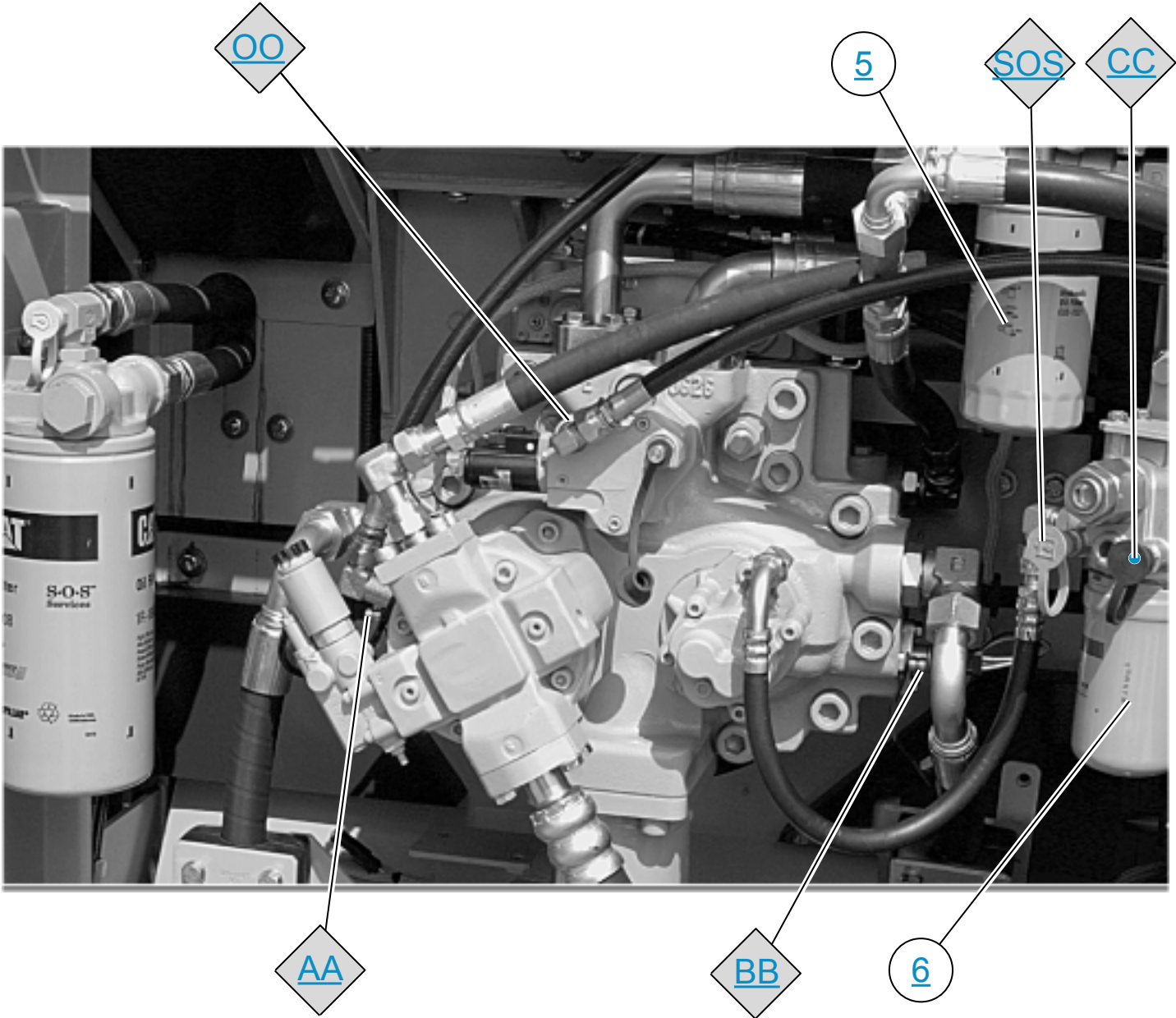








MACHINE TAP LOCATIONS



www.manuals-free.com