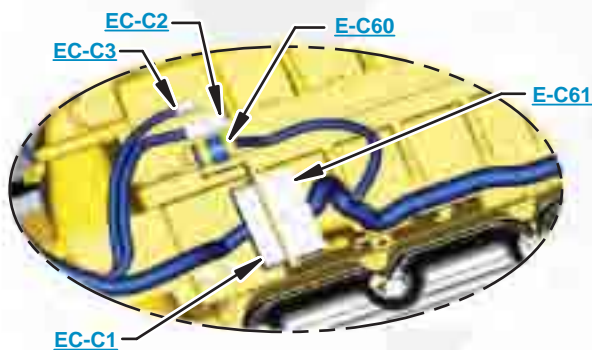


This document is best viewed at a screen resolution of 1024 X 768.

To set your screen resolution do the following:
RIGHT CLICK on the **DESKTOP**.
Select **PROPERTIES**.
CLICK the **SETTINGS TAB**.
MOVE THE SLIDER under **SCREEN RESOLUTION** until it shows **1024 X 768**.
CLICK OK to apply the resolution.

The Bookmarks panel will allow you to quickly navigate to points of interest.



Click on any text that is BLUE and underlined. These are hyperlinks that can be used to navigate the schematic and machine views.

VIEW ALL CALLOUTS

When only one callout is showing on a machine view this button will make all of the callouts visible. This button is located in the top right corner of every machine view page.

HOTKEYS (Keyboard Shortcuts)		
	FUNCTION	KEYS
	Zoom In	“CTRL” / “+”
	Zoom Out	“CTRL” / “-”
	Fit to Page	“CTRL” / “0” (zero)
	Hand Tool	“SPACEBAR” (hold down)
	Find	“CTRL” / “F”



www.manuals-free.com

Schematic

330D and 336D Excavator
336D MHPU
Hydraulic System - Attachment

330D:
GBC1-UP
GGE1-UP
THJ1-UP
LRM1-UP
ERN1-UP
RAS1-UP
T2Y1-UP

336D:
JBF1-UP
LMG1-UP
KDJ1-UP
MYP1-UP
JWR1-UP
DTS1-UP
WET1-UP

336D MHPU:
M3M1-UP
M3N1-UP

www.manuals-free.com

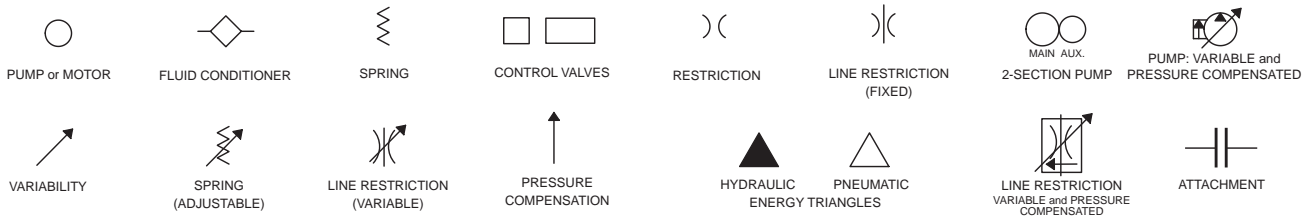
Smart Boom (Boom Float)

Description	Part Number	Machine Location	Schematic Location
Attachments			
Block	185-0488	1	D-2
Plate	199-2012	2	E-1
Valve Gp - Check	(EC1) 297-0371	3	E-1
	(EC2) 297-0370	4	E-1
Valve Gp - Flow Control (Boom Float, Pilot Oil)	201-9236	5	E-1
Valve Gp - Load Control	263-1962	6	E-3
(Boom Lowering, Drift Reduction, Relief)		7	E-2
Valve Gp - Manual (Boom Lower)	270-5692	8	E-2
Valve Gp - Solenoid	185-0472	9	D-1
Standard 330D/336D/336D MHPU with Heavy Lift and Fine Swing			
Accumulator Gp - Hydraulic (Charged)	164-6981	10	A-4
Cylinder Gp - Boom	NOTE A	11	F-2
Cylinder Gp - Bucket	NOTE A	12	F-7
Cylinder Gp - Stick	NOTE A	13	E-7
Filter & Valve Gp - Pilot (Hydraulic Oil)	158-8987	14	A-4
Filter Gp - Oil (Hydraulic Return)	188-4140	15	A-6
Filter Gp - Oil (Hydraulic, Case Drain)	289-8194	16	A-4
Manifold Gp - Control (Pilot Oil)	215-5037	17	B-5
Motor Gp - Piston (Fan)	234-4638	18	A-7
Motor Gp - Swing	200-3373	19	F-5
Motor Gp - Travel	271-6376	20	F-5
		21	F-3
Pump Gp - Piston (Hydraulic Fan)	259-0815	22	B-3
Pump Gp - Piston (with Pilot Gear Pump)	322-8733	23	B-2
Swivel Gp	234-4440	24	E-4
Valve Gp - Check (Oil Cooler Bypass) (Control Valve)	190-7745	25	A-7
Valve Gp - Load Control (Stick Drift Red, Line Relief)	255-5683	26	D-5
Valve Gp - Main Control	285-1345	27	C-1
Valve Gp - Pilot (Joystick, LH)	297-0531	28	C-7
Valve Gp - Pilot (Joystick, RH)	297-0530	29	C-6
Valve Gp - Pilot (Travel)	310-0414	30	D-7
Valve Gp - Pressure Reducing (Boom Priority)	232-4102	31	A-6
Valve Gp - Pressure Reducing (Boom Up Priority) (Stick-In Priority)	206-3354	32	B-6
Valve Gp - Pressure Reducing (Boom, Swing Priority)	232-4102	33	B-4
Valve Gp - Shuttle	185-0462	34	B-6
	123-2430	35	B-4
Valve Gp - Solenoid (Heavy Lift)	121-6303	36	A-4
Valve Gp - Swing Cushion With Fine Swing	158-9090	37	E-5
Valve Gp - Swing Cushion Without Fine Swing		37	F-6
Valve Gp - Travel Counterbalance	204-2819	38	E-5
		39	E-3

Note A: Refer to Parts Manual for your specific machine.

Tap Number	Description	Schematic Location
AA	Pilot Filter Pressure Test Port	A-4
BB	Drive Pump Pressure Test Port	B-2
CC	Power Shift Pressure Test Port	A-1
DD	Idler Pump Pressure Test Port	A-1
SOS	Hydraulic Oil Sampling Port	A-4

BASIC COMPONENT SYMBOLS



VALVE ENVELOPES

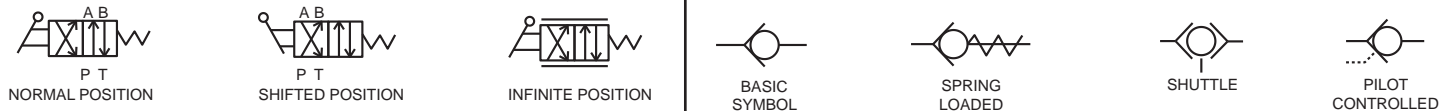
VALVES

VALVE PORTS



CONTROL VALVES

CHECK VALVES

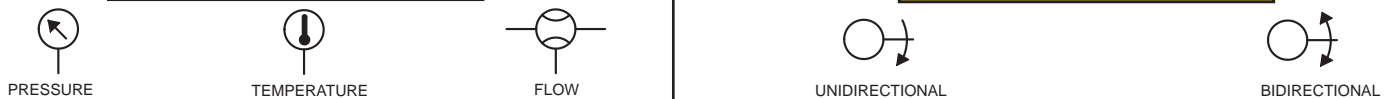


FLUID STORAGE RESERVOIRS



MEASUREMENT

ROTATING SHAFTS



COMBINATION CONTROLS



MANUAL CONTROL SYMBOLS



RELEASED PRESSURE

PILOT CONTROL SYMBOLS

REMOTE SUPPLY PRESSURE



ACCUMULATORS

CROSSING AND JOINING LINES

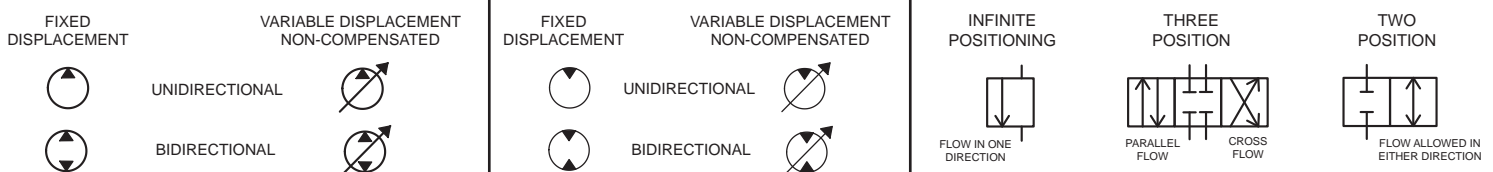
HYDRAULIC AND PNEUMATIC CYLINDERS



HYDRAULIC PUMPS

HYDRAULIC MOTORS

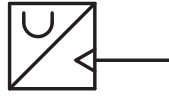
INTERNAL PASSAGEWAYS



Hydraulic Symbols (Electrical)



Transducer
(Fluid)



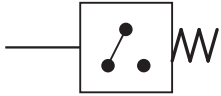
Transducer
(Gas / Air)



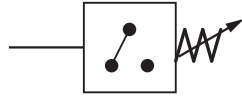
Generator



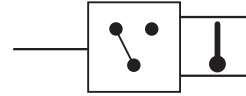
Electric Motor



Pressure Switch



Pressure Switch
(Adjustable)

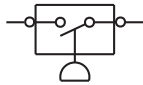


Temperature Switch

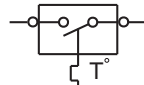


Electrical Wire

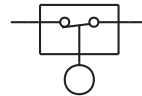
Electrical Symbols (Electrical)



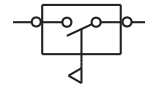
Pressure
Symbol



Temperature
Symbol



Level
Symbol

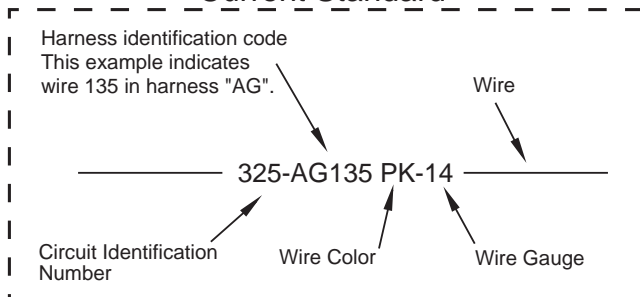


Flow
Symbol

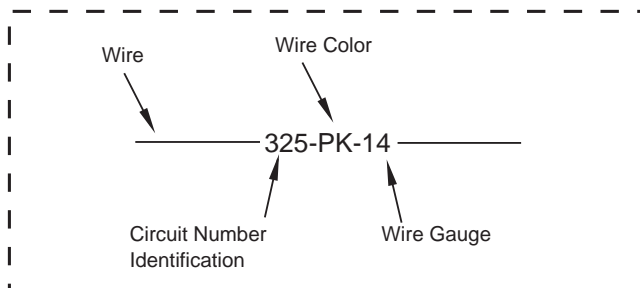
Wire Number Identification Codes

Electrical Schematic Example

Current Standard

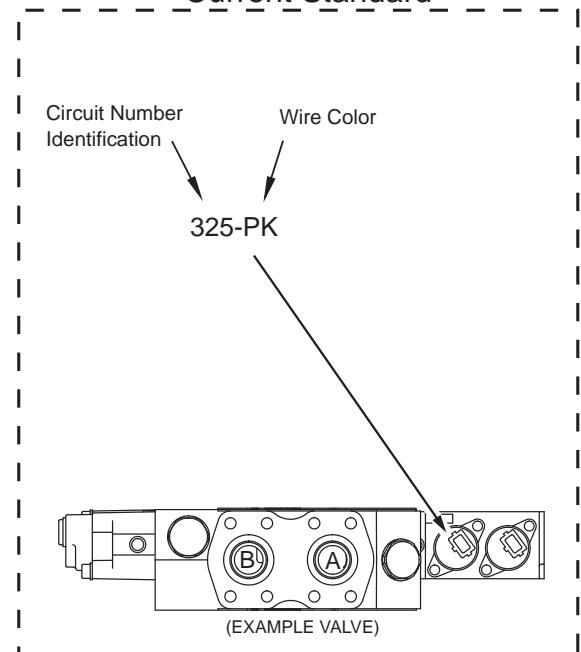


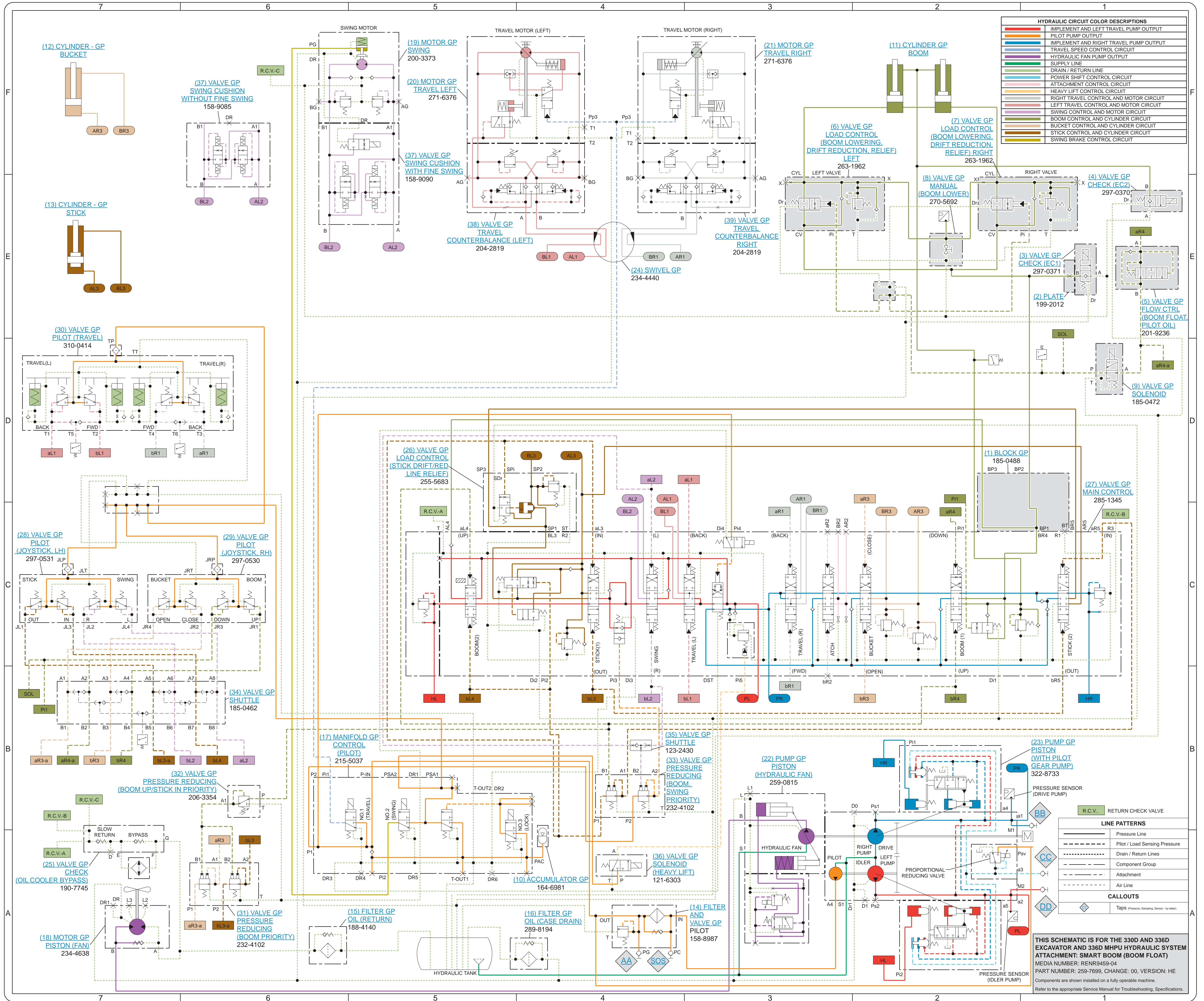
Previous Standard



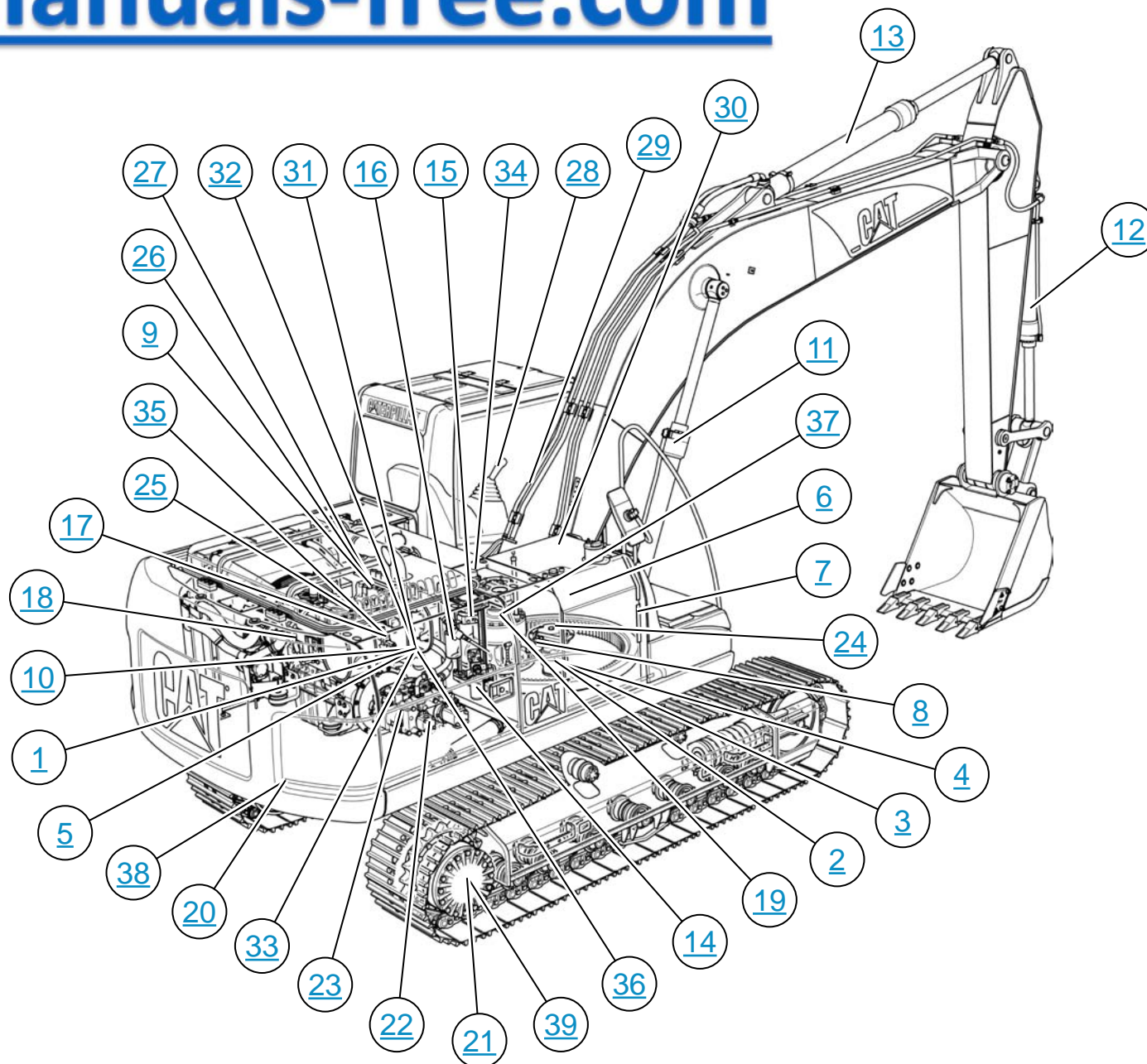
Hydraulic Schematic Example

Current Standard

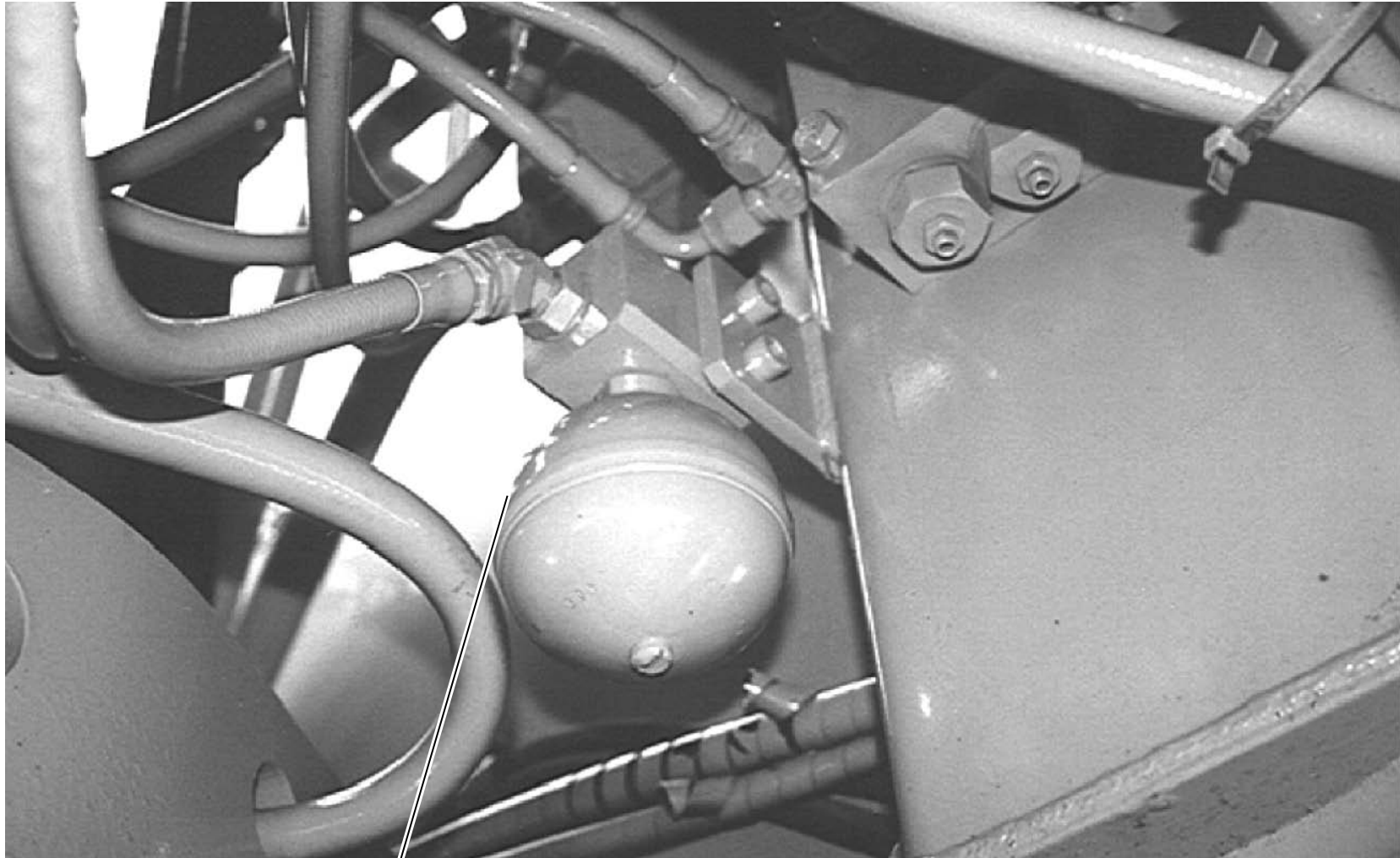


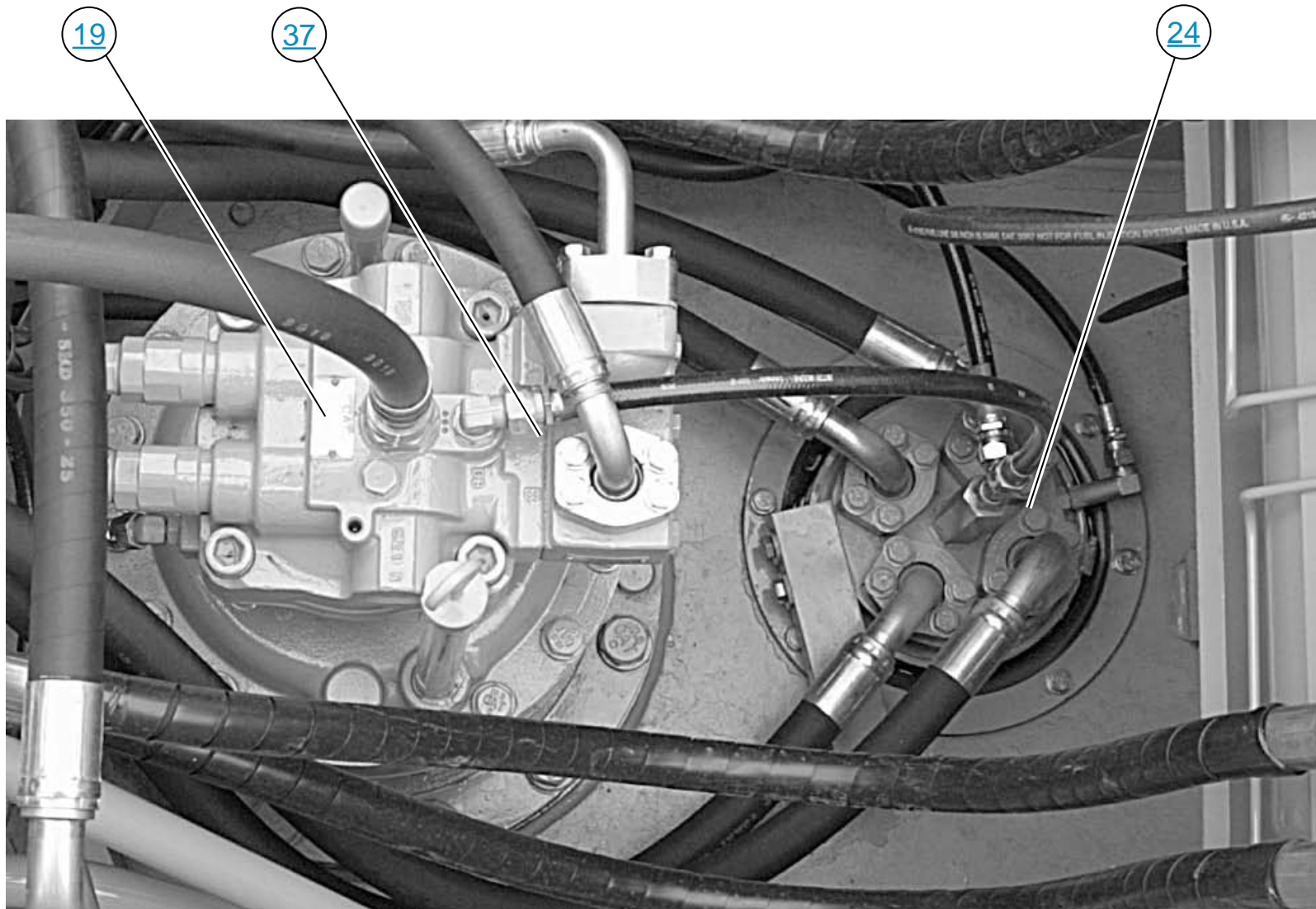


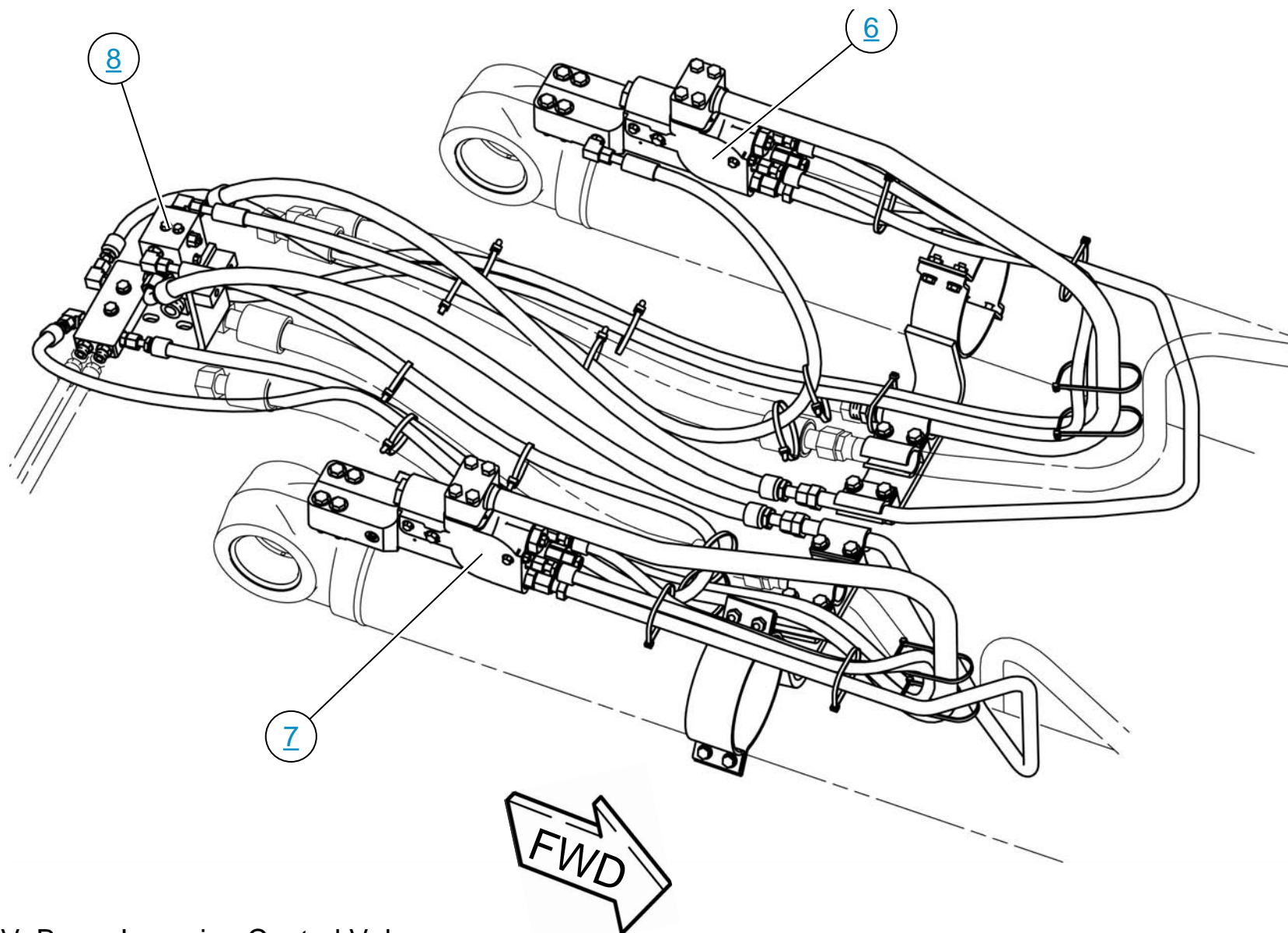
www.manuals-free.com



www.manuals-free.com

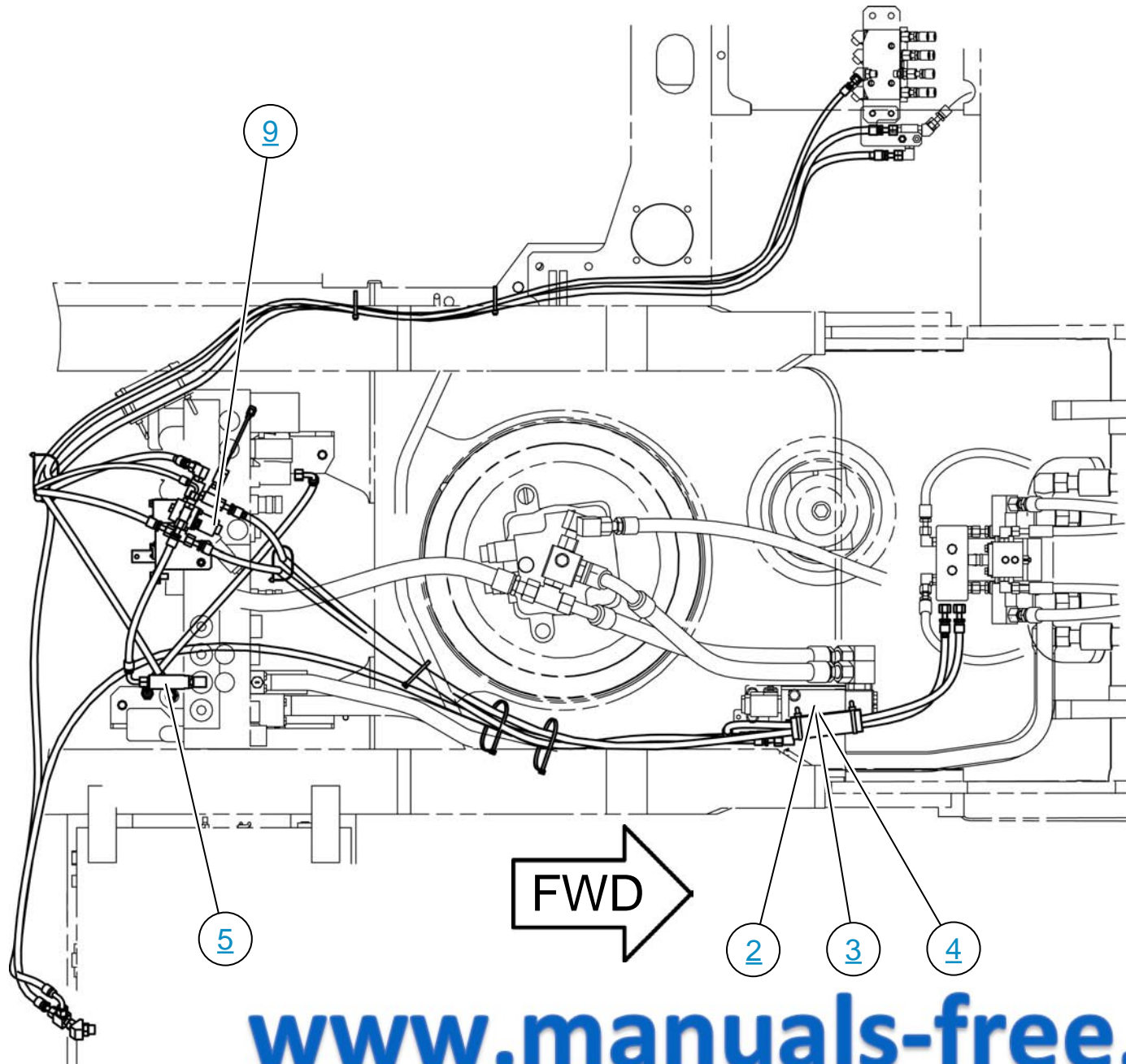






BLCV: Boom Lowering Control Valve

LINES GP - BOOM FLOAT



PUMP GP - PISTON (MAIN)

