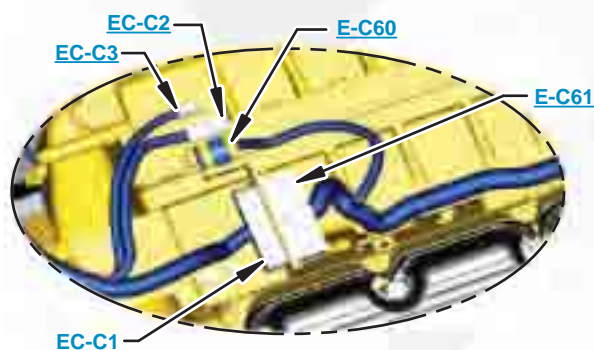


This document is best viewed at a screen resolution of 1024 X 768.

To set your screen resolution do the following:
RIGHT CLICK on the **DESKTOP**.
 Select **PROPERTIES**.
CLICK the **SETTINGS TAB**.
MOVE THE SLIDER under **SCREEN RESOLUTION** until it shows **1024 X 768**.
CLICK OK to apply the resolution.

The Bookmarks panel will allow you to quickly navigate to points of interest.



Click on any text that is BLUE and underlined. These are hyperlinks that can be used to navigate the schematic and machine views.

VIEW ALL CALLOUTS

When only one callout is showing on a machine view this button will make all of the callouts visible. This button is located in the top right corner of every machine view page.

HOTKEYS (Keyboard Shortcuts)		
	FUNCTION	KEYS
	Zoom In	"CTRL" / "+"
	Zoom Out	"CTRL" / "-"
	Fit to Page	"CTRL" / "0" (zero)
	Hand Tool	"SPACEBAR" (hold down)
	Find	"CTRL" / "F"



www.manuals-free.com

Schematic

329D, 330D, 336D and 340D Excavator 336D MHPU Hydraulic System

329D:
JBF1-UP

330D:
GBC1-UP
GGE1-UP
THJ1-UP
ERN1-UP
RAS1-UP

336D:
LMG1-UP
MYG1-UP
PPN1-UP
JWR1-UP
DTS1-UP

336D MHPU:
L5K1-UP
M3M1-UP
M3N1-UP
MDS1-UP

340D:
JTN1-UP

www.manuals-free.com

Heavy Lift and Fine Swing

COMPONENT LOCATION



Description	Part Number	Machine Location	Schematic Location
Accumulator Gp - Hydraulic (Charged)	164-6981	1	B-5
Cylinder Gp - Boom	NOTE A	2	F-2
Cylinder Gp - Bucket	NOTE A	3	F-8
Cylinder Gp - Stick	NOTE A	4	F-7
Filter & Valve Gp - Pilot (Hydraulic Oil)	158-8987	5	A-4
Filter Gp - Oil (Hydraulic Return)	188-4140	6	A-6
Filter Gp - Oil (Hydraulic, Case Drain)	289-8194	7	A-5
Manifold Gp - Control (Pilot Oil)	215-5037	8	A-6
Motor Gp - Piston (Fan)	234-4638	9	A-8
Motor Gp - Swing	200-3373	10	F-6
Motor Gp - Travel	271-6376	11	F-5
Left Right		12	F-4
Pump Gp - Piston (Hydraulic Fan)	259-0815	13	B-3
Pump Gp - Piston (with Pilot Gear Pump)	322-8733	14	B-2
Swivel Gp	234-4440	15	E-4
Valve Gp - Check (Oil Cooler Bypass) (Control Valve)	190-7745	16	A-8
Valve Gp - Load Control (Boom Drift Red, Line Relief)	255-5683	17	D-2
Valve Gp - Load Control (Stick Drift Red, Line Relief)	255-5680	18	D-6
Valve Gp - Main Control	285-1345	19	C-1
Valve Gp - Pilot (Joystick, LH)	297-0533	20	C-8
Valve Gp - Pilot (Joystick, RH)	297-0532	21	C-7
Valve Gp - Pilot (Travel)	310-0414	22	E-8
Valve Gp - Pressure Reducing (Boom Priority)	232-4102	23	A-7
Valve Gp - Pressure Reducing (Boom Up Priority) (Stick-In Priority)	206-3354	24	B-7
Valve Gp - Pressure Reducing (Boom, Swing Priority)	232-4102	25	B-4
Valve Gp - Shuttle	185-0462	26	B-8
	123-2430	27	B-4
Valve Gp - Solenoid (Heavy Lift)	121-6303	28	A-4
Valve Gp - Cushion Crossover Relief	158-9085	29	E-6
Valve Gp - Travel Counterbalance	204-2819	30	E-5
Left Right		31	E-4

Note A: Refer to Parts Manual for your specific machine.

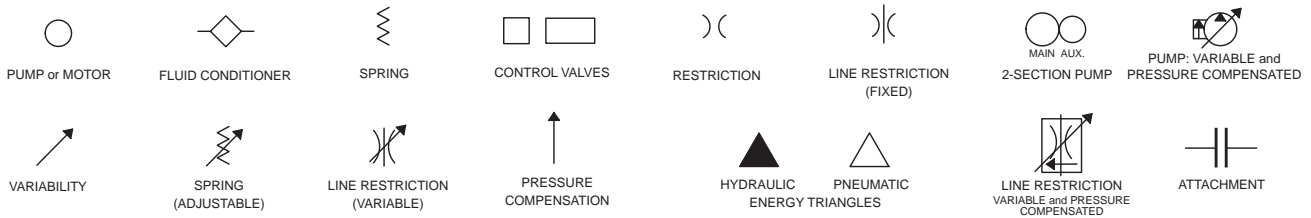
TAP LOCATION



Tap Number	Description	Schematic Location
AA	Pilot Filter Pressure Test Port	A-4
BB	Drive Pump Pressure Test Port	B-2
CC	Power Shift Pressure Test Port	A-2
DD	Idler Pump Pressure Test Port	A-2
SOS	Hydraulic Oil Sampling Port	A-4

www.manuals-free.com

BASIC COMPONENT SYMBOLS



VALVE ENVELOPES

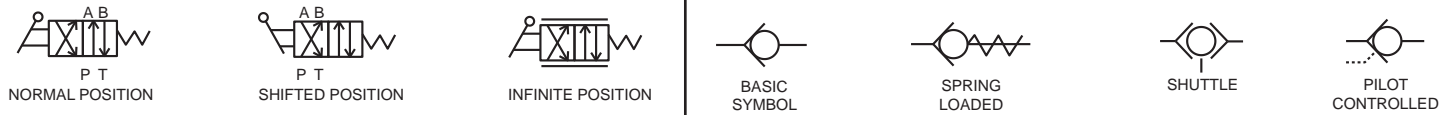
VALVES

VALVE PORTS



CONTROL VALVES

CHECK VALVES

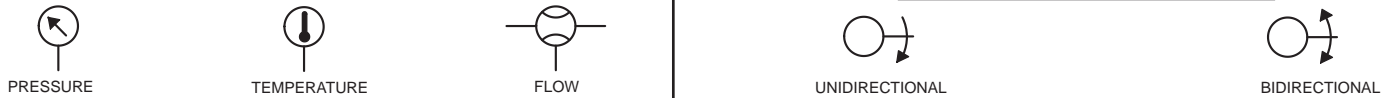


FLUID STORAGE RESERVOIRS



MEASUREMENT

ROTATING SHAFTS



COMBINATION CONTROLS



MANUAL CONTROL SYMBOLS



RELEASED PRESSURE

PILOT CONTROL SYMBOLS

REMOTE SUPPLY PRESSURE



ACCUMULATORS

CROSSING AND JOINING LINES

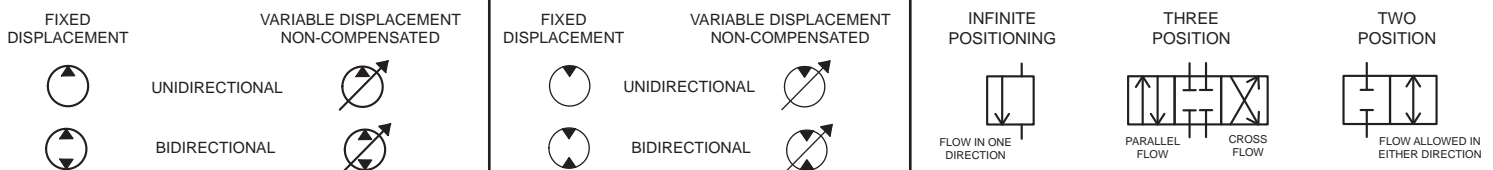
HYDRAULIC AND PNEUMATIC CYLINDERS



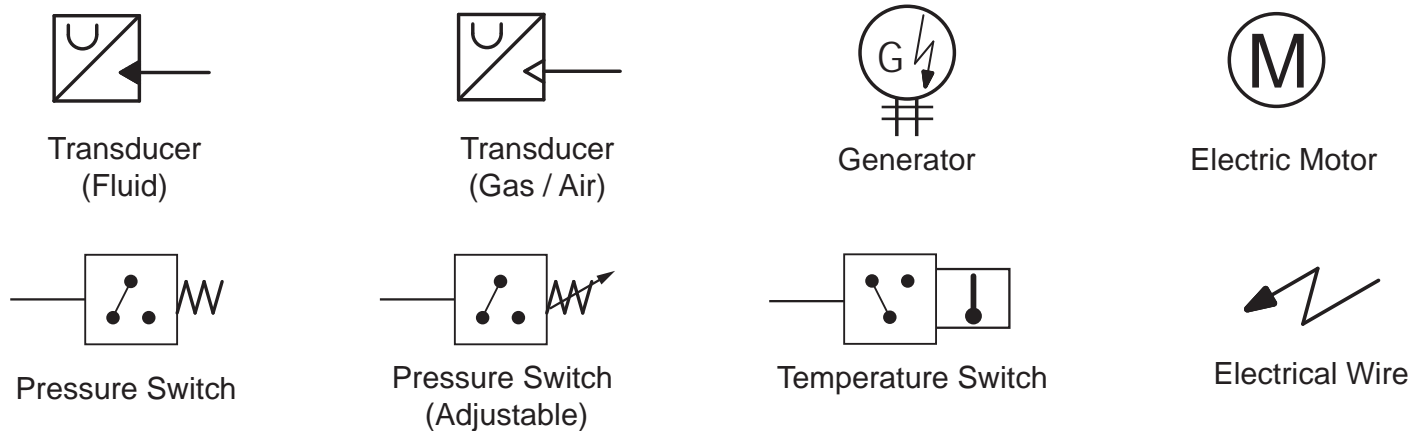
HYDRAULIC PUMPS

HYDRAULIC MOTORS

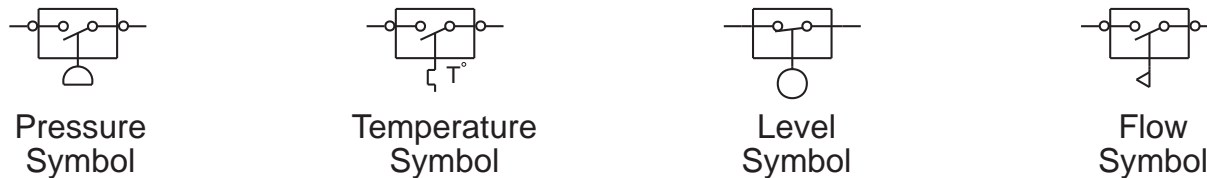
INTERNAL PASSAGEWAYS



Hydraulic Symbols (Electrical)

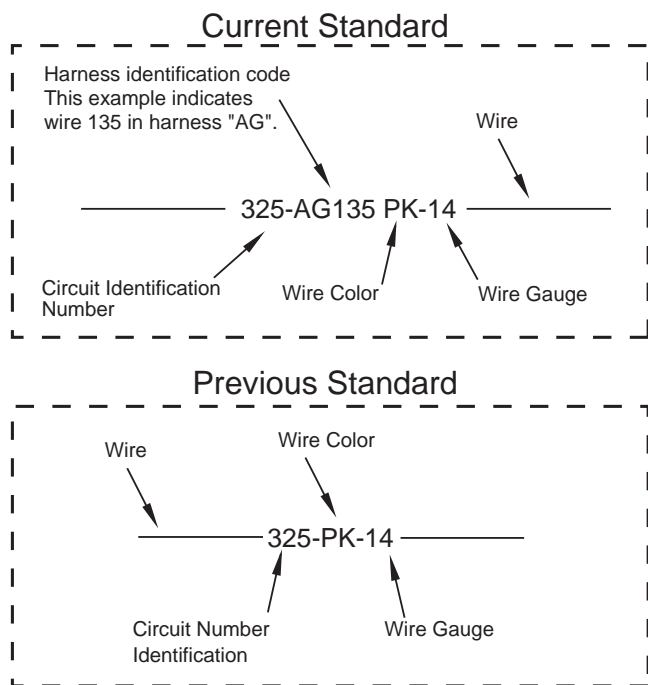


Electrical Symbols (Electrical)

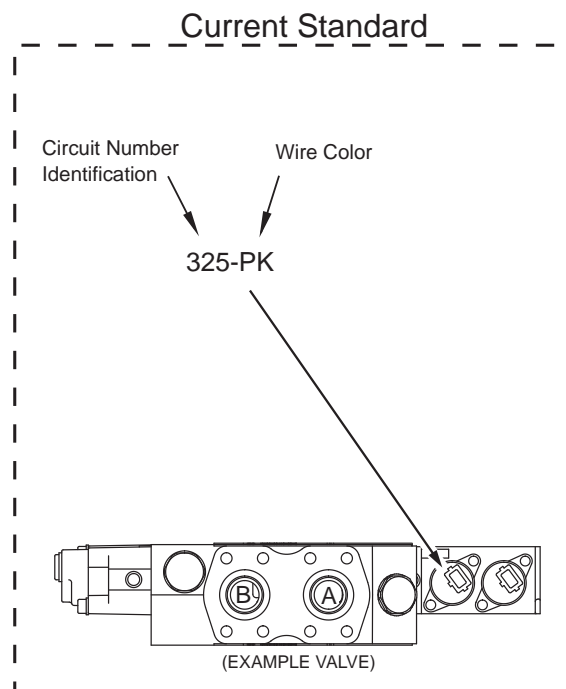


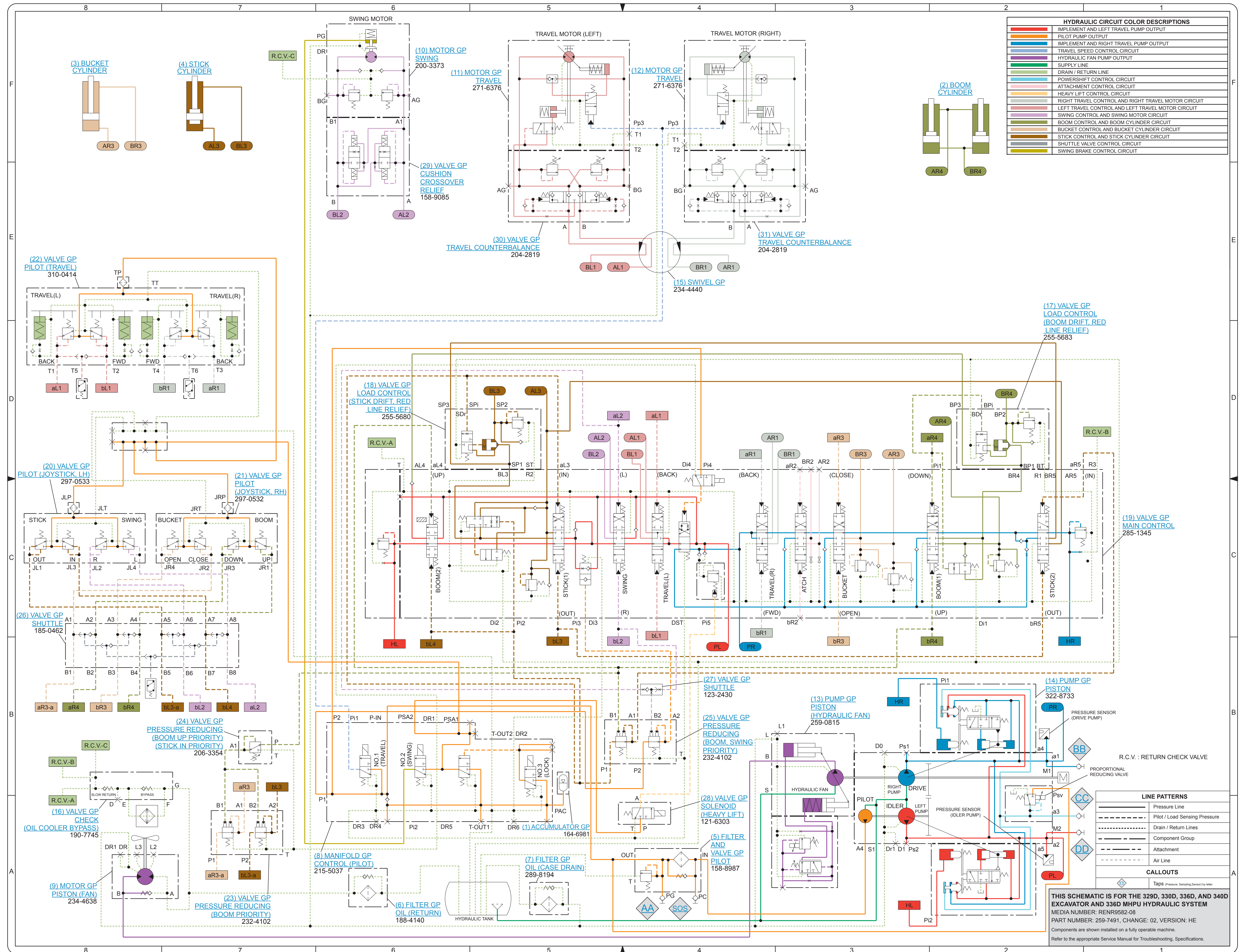
Wire Number Identification Codes

Electrical Schematic Example



Hydraulic Schematic Example

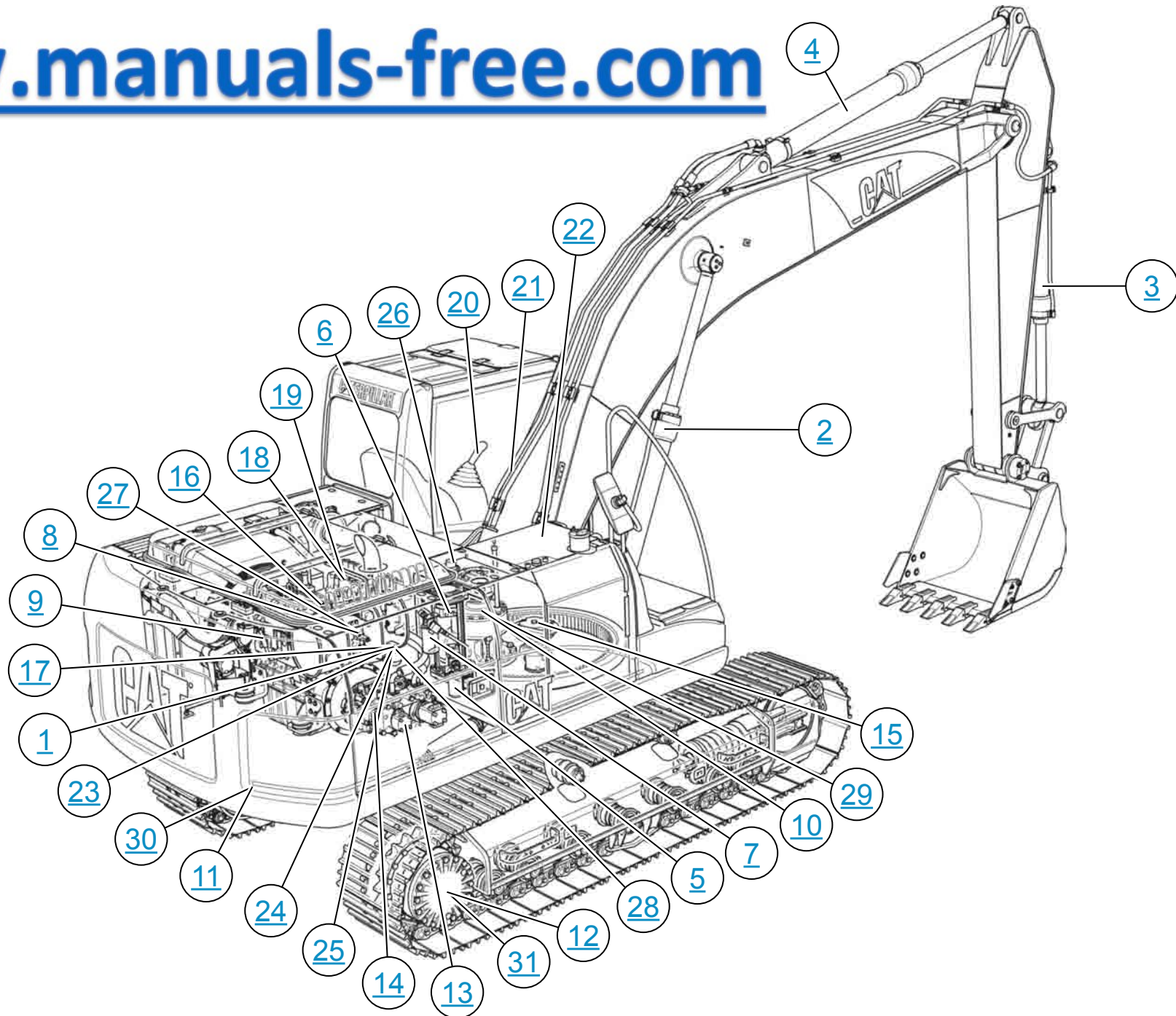




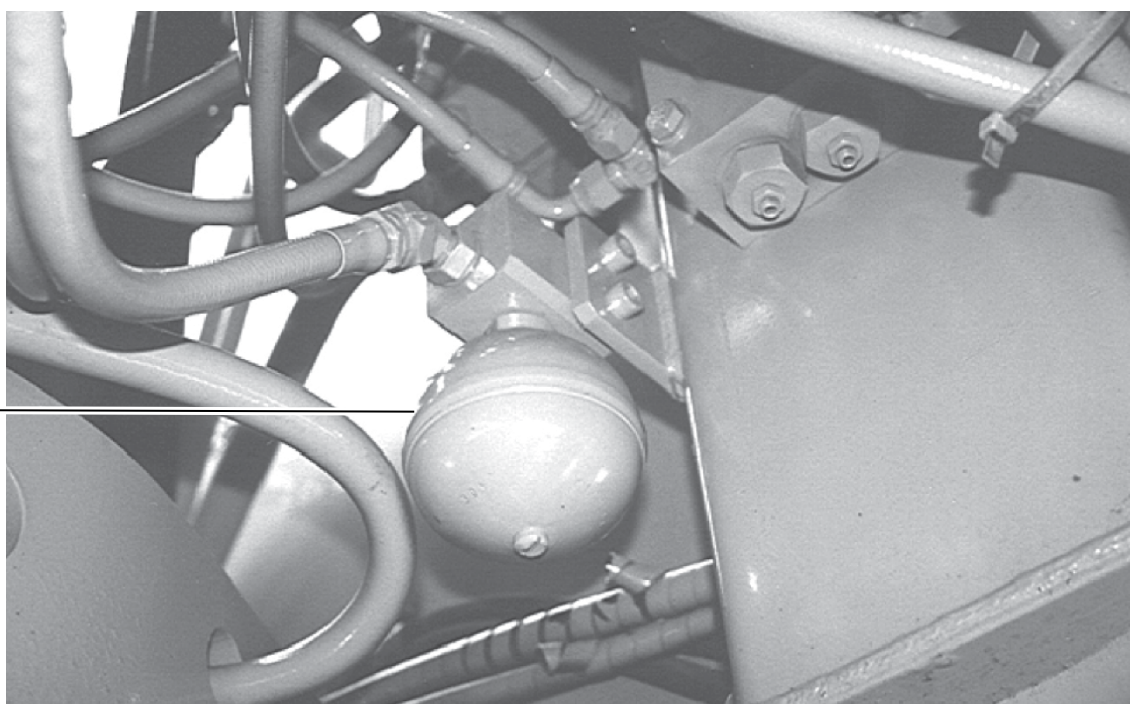
MACHINE COMPONENT LOCATIONS

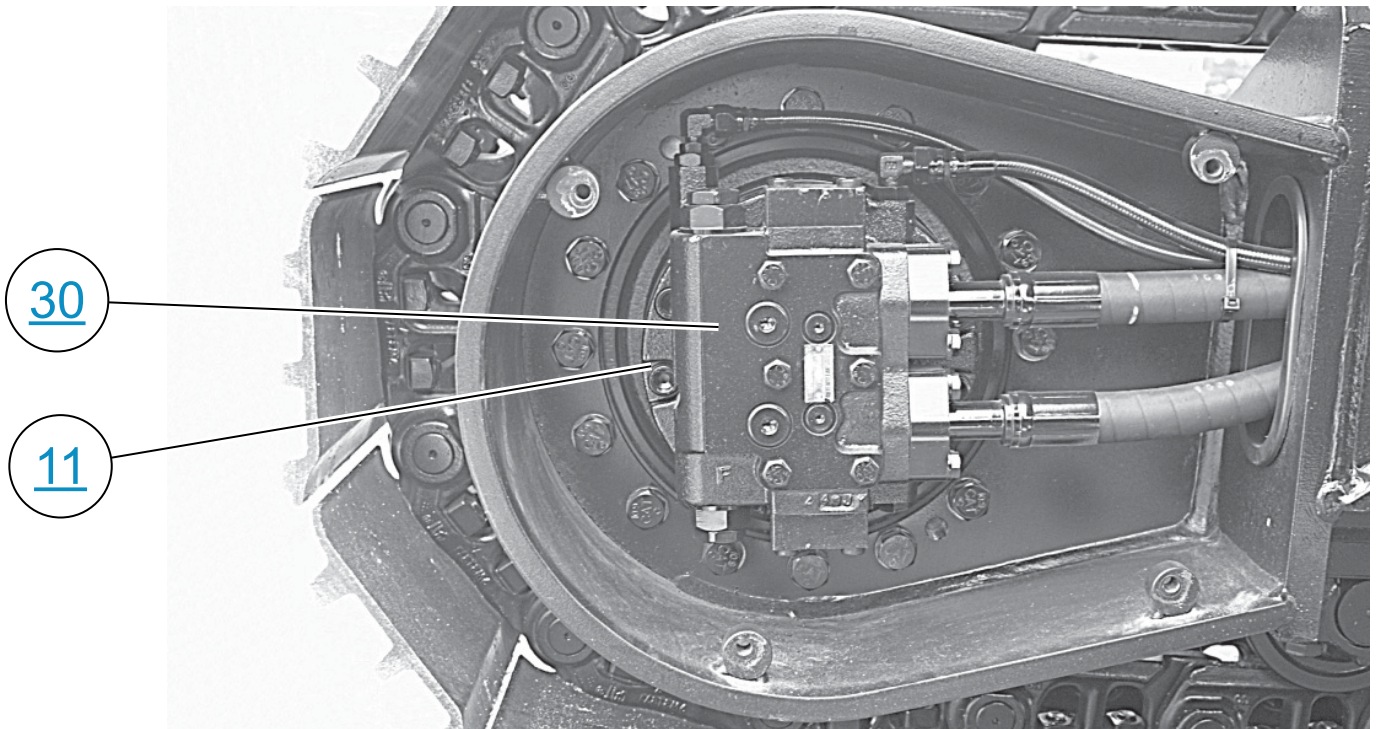


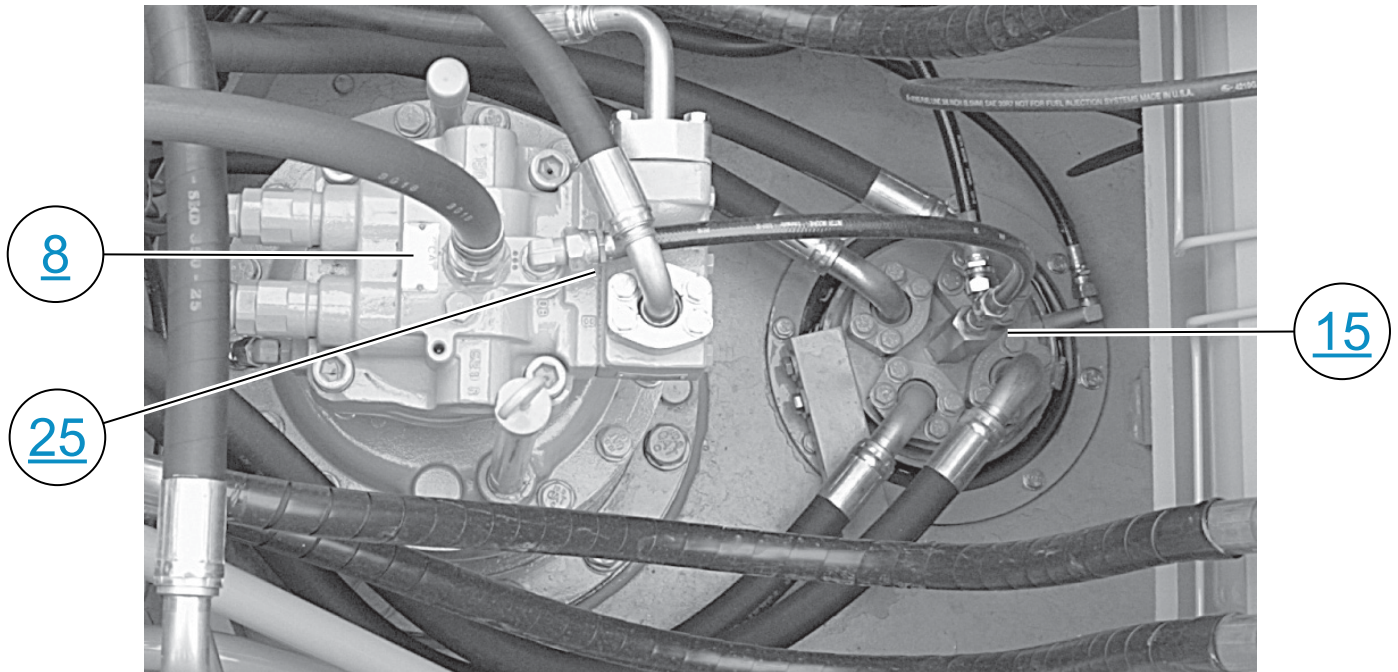
www.manuals-free.com



1







www.manuals-free.com

