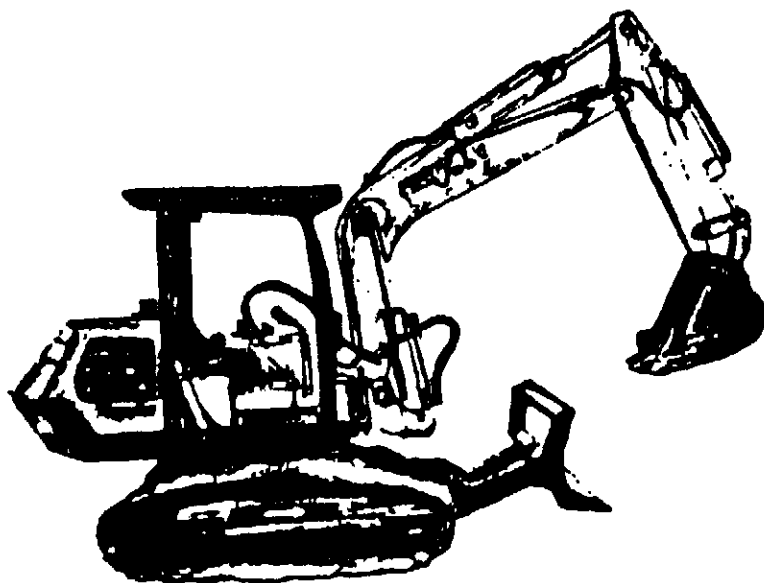


TAKEUCHI TB 1400

ENGINE PART CATALOGS - 3AB1



**TAKEUCHI MFG. (U.S.), LTD.
NORTHEAST ATLANTA INDUSTRIAL PARK
4400-E BANKERS CIRCLE
ATLANTA, GEORGIA 30360
(404) 447-6670**

EFFECTIVE SEPTEMBER 1, 1983

CC

CC

CC

CC

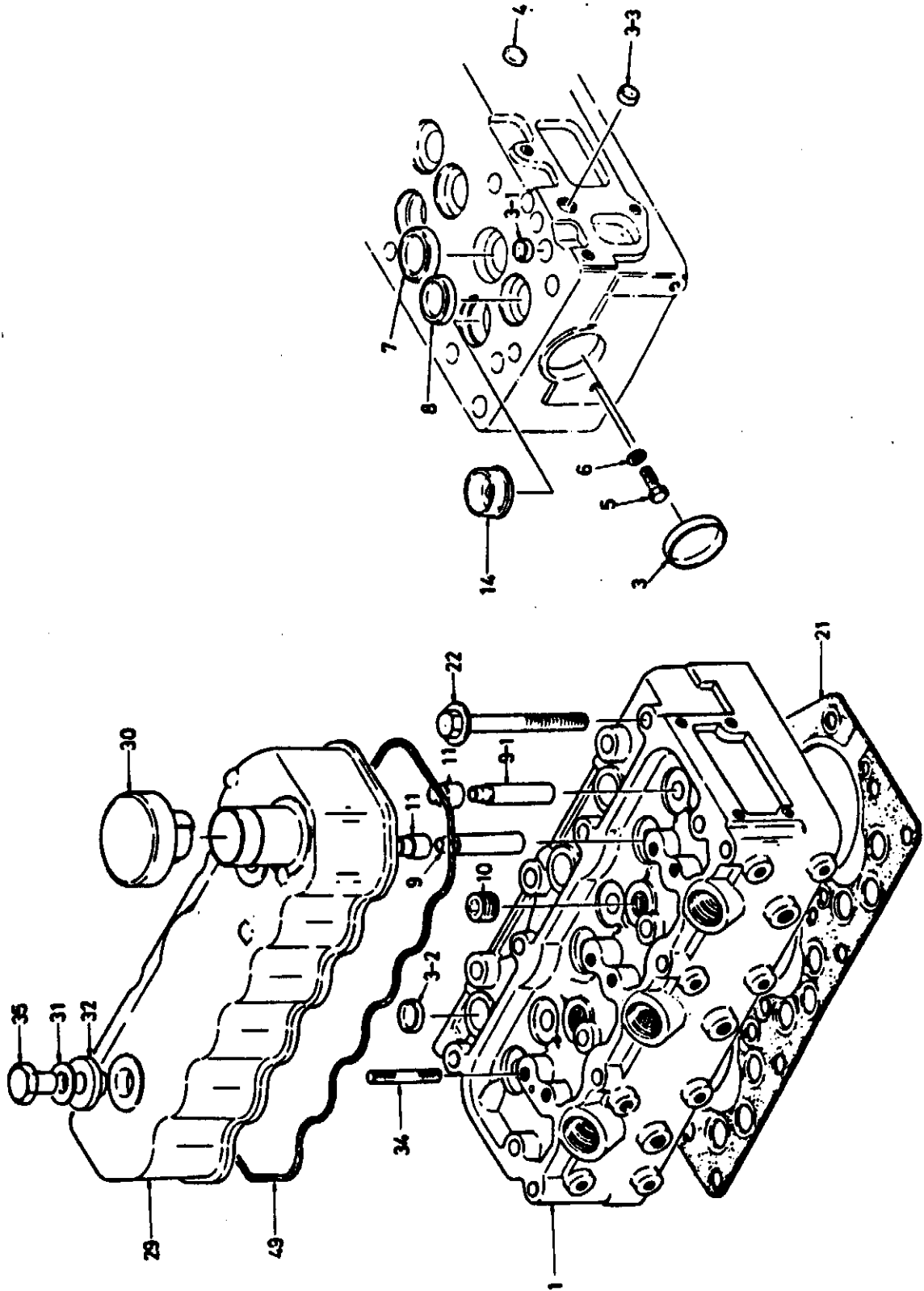
CC

SHEET NO.

NAME

- | | |
|----|---|
| 1 | CYL. HEAD & OTHER PARTS. (HEAD COVER) |
| 2 | CYL. BLOCK & OTHER PARTS |
| 3 | TIMING GEAR CASE & TIMING GEAR |
| 4 | FLYWHEEL HOUSING & OTHER PARTS |
| 5 | OIL PAN & OTHER PARTS |
| 6 | OIL PUMP & FIXING PARTS |
| 7 | CRANKSHAFT, CRANK BRG., PISTON CONN. ROD & FLYWHEEL |
| 8 | |
| 9 | VALVE MECHANISM(CAM SHAFT, IDLE GEAR, ROCKER ARM) |
| 10 | OIL FILTER & FUEL FILTER (FIXING PARTS) |
| 11 | OIL PIPE & FIXING PARTS |
| 12 | COOLING SYSTEM (FAN, WATER) |
| 13 | AIR INTAKE & EXHAUST SYSTEM |
| 14 | AIR CLEANER & OTHER PARTS |
| 15 | FUEL SYSTEM (INJ. NOZZLE, FUEL PIPE) |
| 16 | ENGINE FOOT, HANGER & FIXING PARTS |
| 17 | |
| 18 | INJECTION PUMP & COUPLING |
| 19 | ELECTRICAL PARTS |
| 20 | ENGINE ACCESSORY PARTS |

CYL. HEAD & OTHER PARTS



CYL. HEAD & OTHER PARTS

SHEET 1

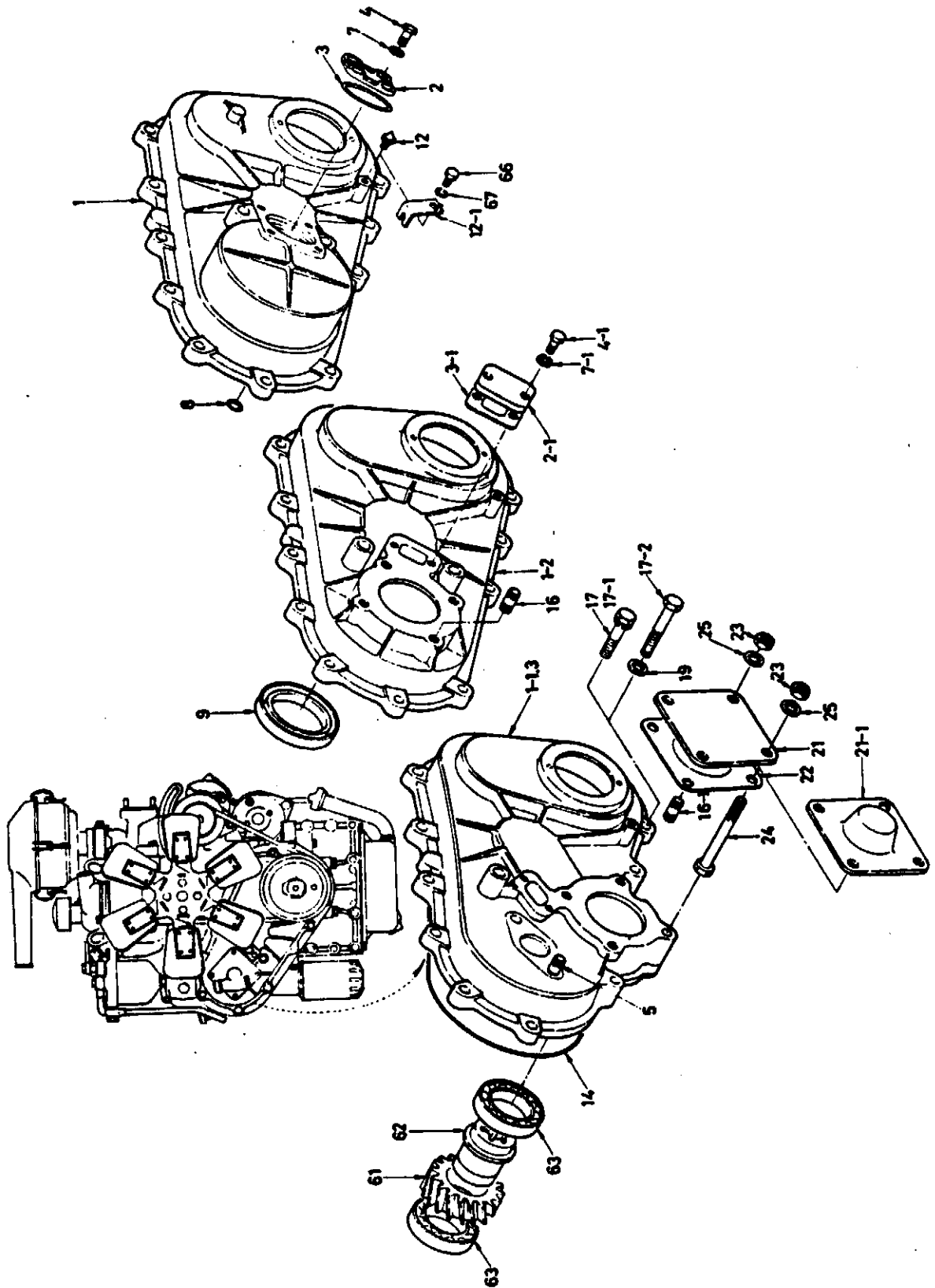
KEY #	PART #	DESCRIPTION	Q'TY	REMARKS	UNIT PRICE
1	1	511110-0990		CYL. HEAD ASM.	
3		911129-0060		SEALING CUP; RR FACE D=45	1
3	1	911129-0810		SEALING CUP; UP FACE D=16	3
3	2	911129-0820		SEALING CUP; UP FACE D=18	3
3	3	911129-0830		SEALING CUP; DRILLED D=12	3
4		909860-5220		PLUG; PLATE CYL HEAD	3
5		909202-0080		PLUG; SCREW	1
6		909920-8430		PACKING; PLUG	1
7		911715-0540		VALVE SEAT INSERT, INLET	3
8		911711-0660		VALVE SEAT INSERT; EXH	3
9		911721-1130		VALVE GUIDE; INLET, CYL HEAD	3
9	1	911721-1590		VALVE GUIDE; EXH. CYL HEAD	3
10		909664-0340		PLUG; 1/2 UPPER FACE	2
11		512569-0040		SEAL; VALVE	6
14		911150-6040		HOT PLUG ASM	3
21		911145-6240		CYL HEAD GASKET	1
22		909802-5140		BOLT; HEX-HD 11MC	15
29		511170-1420		CYL HEAD COVER ASM	1
30		911750-6020		CAP ASM; OIL FILLER	1
31		911179-1050		WASHER	2
32		911179-0300		PACKING; HEAD COVER NUT	2
34		909830-2120		STUD; MF-MF HEAD COVER	2
35		911175-0110		NUT; HEAD COVER	2
49		911173-1370		PACKING; O-RING HEAD COVER	1

CYL. BLOCK & OTHER PARTS

SHEET 2

KEY #	PART #	DESCRIPTION	Q'TY	REMARKS	UNIT PRICE
1	911217-6160	CYL BLOCK ASM	1		
2	909802-5910	BOLT; BRG CAP FIX	8		
6	911219-1950	SEALING CUP; PR FACE D=36	1		
6 1	911219-0050	SEALING CUP; PR FACE D=38	1		
6 2	911219-0060	SEALING CUP; LH SIDE D=32	3		
6 3	911129-0060	SEALING CUP; LH SIDE D=45	2		
8	909664-0340	PLUG; ½ INCH TAPPET CHAMBER	3		
9	909201-3180	PLUG; PLATE, OIL GALLERY	2		
10	909201-3280	PLUG; PLATE; TAPPET CHAMBER	2		
10 1	909201-3450	PLUG; PLATE, TAPPET CHAMBER	3		
11	909864-0150	PLUG; 1/8 INCH TAPER OIL GALL	2		
11	505605-0190	PLUG; 1/8 INCH TAPER OIL GALL	2		
12	909201-0560	PLUG; PLATE, CAM BRG	1		
28	911311-1530	PLATE F; CYL BODY	1		
28 1	911311-0860	PLATE F' CYL BODY	1		
29	511312-0110	PACKING; PLATE F TO CYL B	1		
31	908151-0240	PIN; STRAIGHT, BODY FRT	2		
32	901900-8200	BOLT; SEMS, PLATE FRT FIX	3		
36	909902-2990	NIPPLE; ROCKER OIL FEED	1		
37	908161-0320	PIN; STRAIGHT, BODY RR	1		
47	913721-1540	WATER DRAIN COCK ASM	1		
48	909902-4320	NIPPLE; WATER DRAIN	1		
49	909809-0980	PLUG; WATER DRAIN	1		
54	909606-5350	BOLT; HEX-HD MF REAMER	1		
78	909924-4490	SEAL; CRANK SHAFT	1		
99	911258-1080	PACKING; OILPAN TO BRG CAP	2		

TIMING GEAR CASE & OTHER PARTS

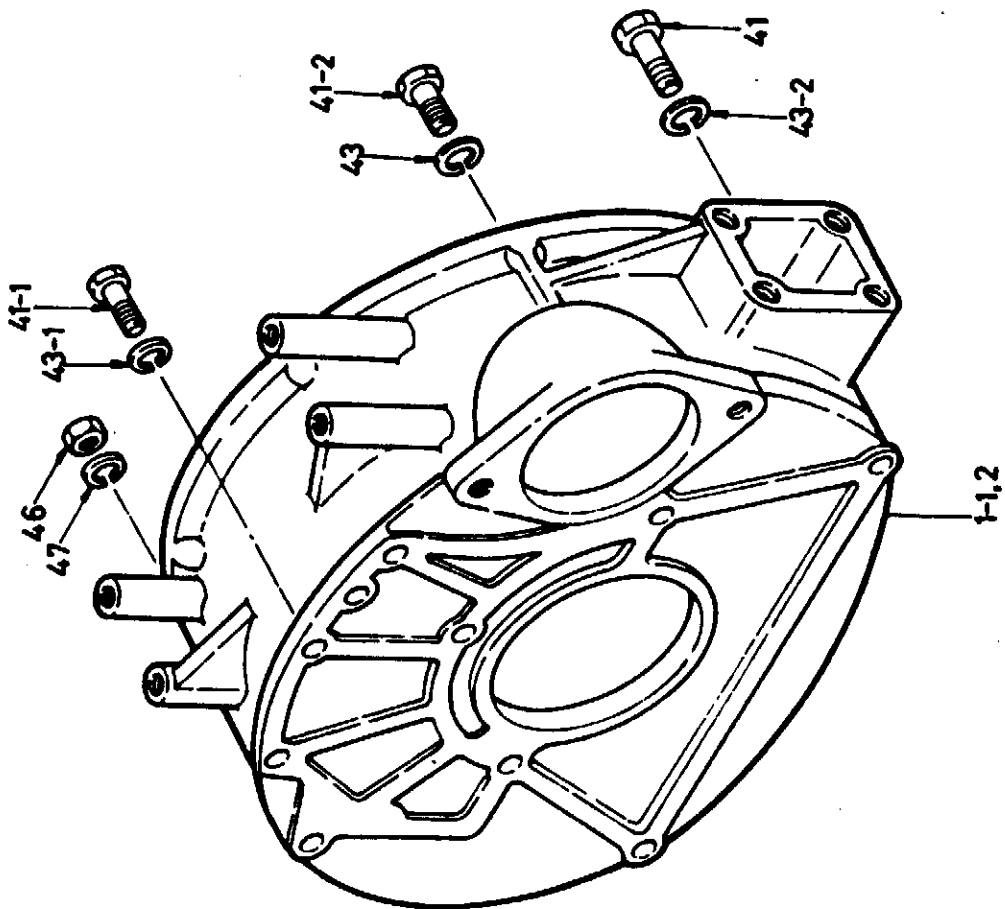
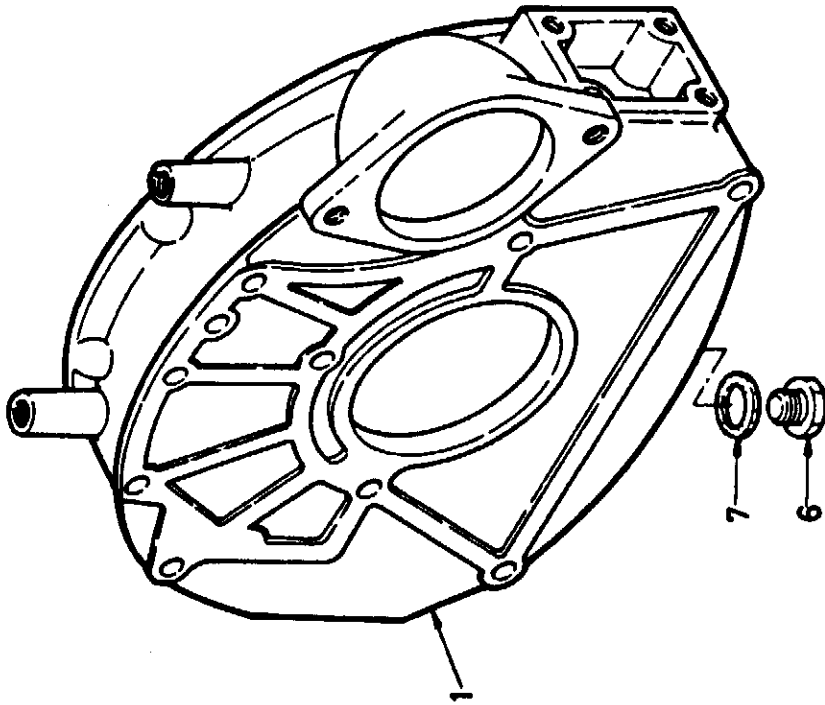


TIMING GEAR CASE & OTHER PARTS

SHEET 3

<u>KEY #</u>	<u>PART #</u>	<u>DESCRIPTION</u>	<u>QTY</u>	<u>REMARKS</u>	<u>UNIT PRICE</u>
1 2	911311-1770	GEAR CASE; TIMING	1		
2 1	911321-1370	COVER; GEAR CASE	1		
3 1	911322-0660	PACKING; GEAR CASE COVER	1		
4 1	902040-6120	BOLT; HEX-HD MF	2		
4 1	901900-6120	BOLT; SEMS	2		
7 1	909150-5060	SPRING WASHER	2		
8	911312-0460	PACKING; GEAR CASE	2		
9	909924-4480	OIL SEAL	1		
12	911327-0450	POINTER; TIMING GEAR CASE	1		
14	911312-0340	PACKING; TIMING GEAR CASE	1		
17	901910-8320	BOLT; SEMS GEAR CASE	9		

FLY WHEEL HOUSING & OTHER PARTS



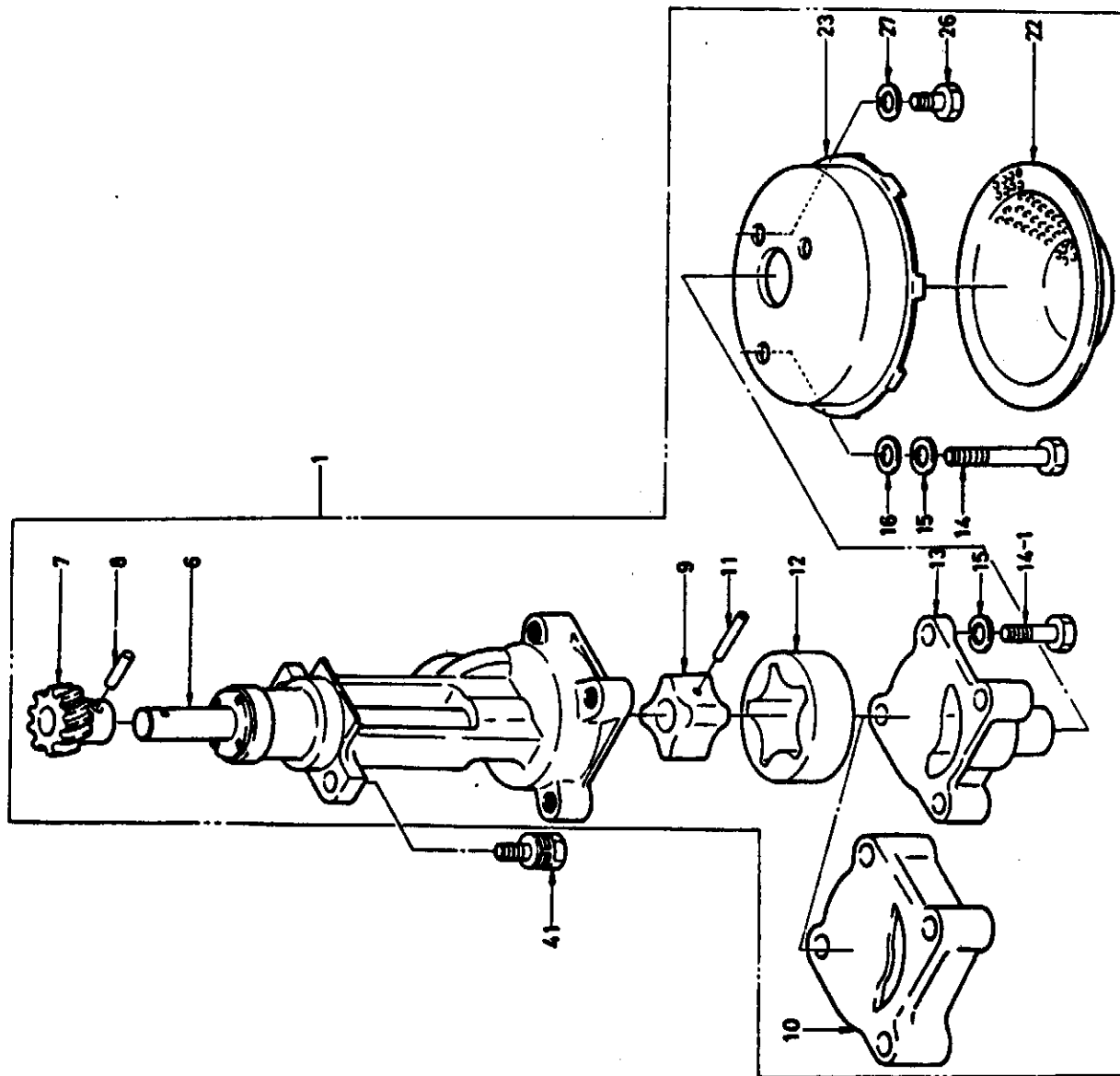
FLY WHEEL HOUSING & OTHER PARTS

<u>KEY #</u>	<u>PART #</u>	<u>DESCRIPTION</u>	<u>Q'TY</u>	<u>REMARKS</u>	<u>UNIT PRICE</u>
1	911341-6270	HOUSING; FLYWHEEL			
6	999202-3160	PLUG; SCREW	1		
7	909571-4160	GASKET	1		
41	902351-2350	BOLT; HEX-HD MC: HOUSING	2		
41	901931-2350	BOLT; SEMS, HOUSING	2		
41 1	902051-0300	VOLT: HEX-HD MF	3		
41 1	901911-0300	BOLT; SEMS	3		
41 2	909800-6840	BOLT: HEX-HD MF	3		
43	909150-5120	SPRING WASHER	3		
43 1	909150-5100	SPRING WASHER	3		
43 2	909150-5120	SPRING WASHER	2		
46	909110-4100	NUT; REAMER BOLT	1		
47	909150-5100	SPRING WAHSER: REAMER	1		

OIL PAN & OTHER PARTS

<u>KEY #</u>	<u>PART #</u>	<u>DESCRIPTION</u>	<u>Q'TY</u>	<u>REMARKS</u>	<u>UNIT PRICE</u>
1	2	511360-1580	OIL PAN ASM	1	
3		909662-0120	PLUG; OIL DRAIN	1	
4		909920-6510	PACKING; O-RING	1	
6		511215-0310	CRANK CASE	1	
17		911367-6030	PACKING; OIL PAN-CRANK CAS	1	
20		999202-3160	PLUG; THERMOMETER HOLE	1	
21		909571-4160	PACKING; PLUG	1	
29		902050-6140	BOLT; OIL PAN FIX	27	
30		909150-5060	SPRING WASHER	27	
36	3	511760-0531	LEVEL GAUGE ASM; OIL	1	
36	4	511760-0380	CAP ASM; OIL	1	
42		901065-8450	BOLT; HEX-HD CRANK CASE FI	8	
42	1	901065-8500	BOLT; FILLER-CRANK CASE	2	
42	3	901065-8800	BOLT; HEX-HD CRANK CASE FI	4	
42	4	909600-0820	BOLT; HEX-HD CRANK CASE FI	1	
42	5	909602-0700	BOLT; HEX-HD CRANK CASE FI	3	
43		909150-5080	SPRING WASHER	18	
44		909160-6080	WASHER PLANE	2	
66		914149-1730	DISTRANCE PIECE; OIL FILLER	2	
67		909851-4110	SHIM; OIL FILLER (A/R)	0	

OIL PUMP & FIXING PARTS



OIL PUMP & FIXING PARTS

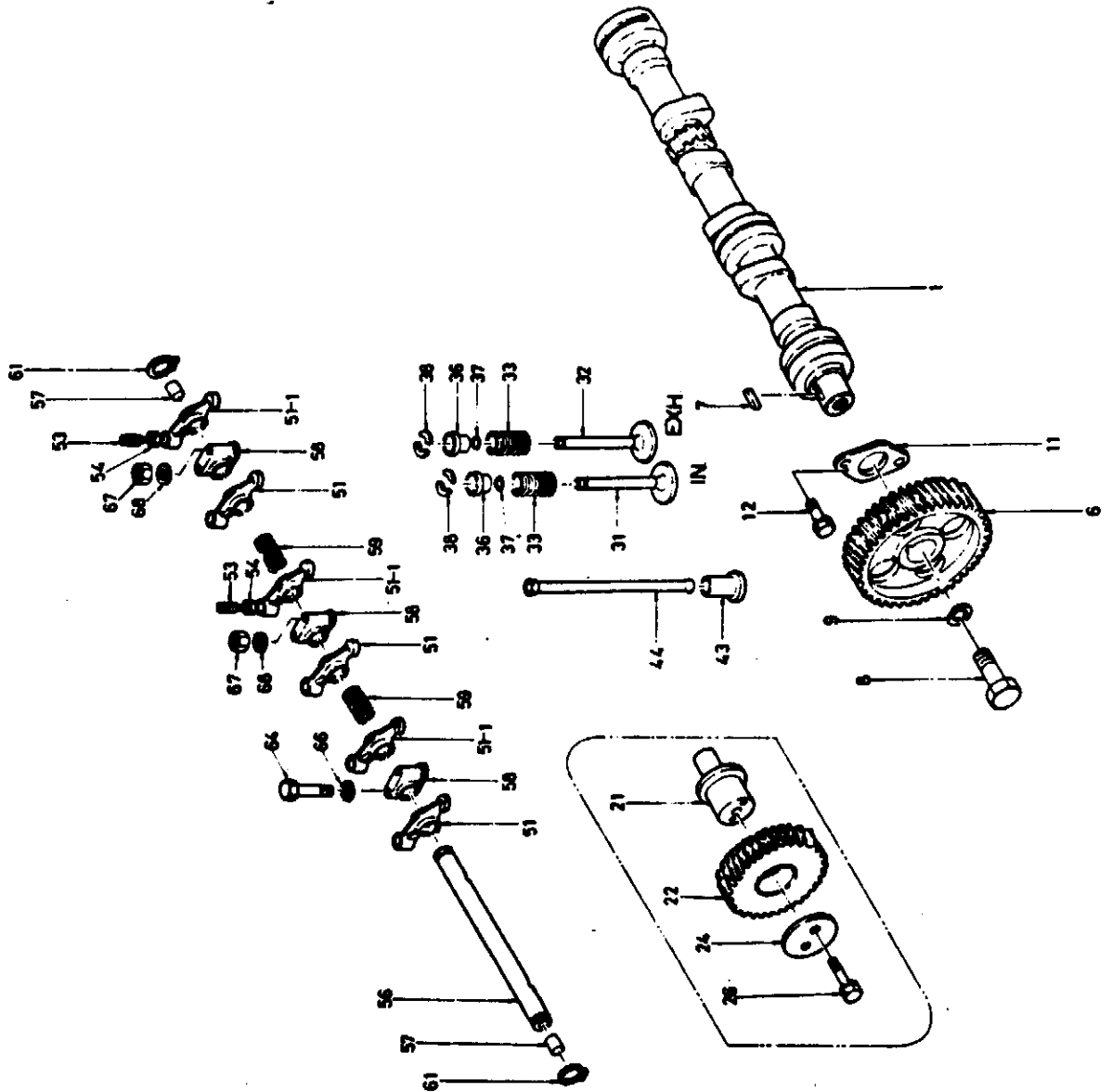
SHEET 6

<u>KEY #</u>	<u>PART #</u>	<u>DESCRIPTION</u>	<u>Q'TY</u>	<u>REMARKS</u>	<u>UNIT PRICE</u>
1	913100-6370	OIL PUMP ASM: W/STRAINER	1		
6	913123-1030	SHAFT; OIL PUMP DRIVE	1		
7	913128-0790	PINION; OIL PUMP DRIVE	1		
8	909878-0840	PIN; PINION TO SHAFT	1		
9	913121-0560	ROTOR; OIL PUMP	1		
10	913119-6090	SPACER; OIL PUMP	1		
11	913129-0170	PIN; ROTOR TO SHAFT	1		
12	913125-0470	VANE; OIL PUMP	1		
13	913113-0860	COVER; OIL PUMP	1		
14	901045-8750	BOLT; HEX-HD MF. COVER TO	2		
14 1	901045-8500	BOLT; HEX-HD MF. COVER TO	2		
15	909150-5080	SPRING WASHER	4		
16	909164-5080	WASHER; PLANE	2		
22	913143-6030	GAUZE; OIL STRAINER	1		
23	913141-6041	CASE; OIL STRAINER	1		
26	902040-8120	BOLT; HEX-HD MF, CASE TO	1		
27	909150-5080	SPRING WASHER	1		
41	901970-8250	BOLT; SEMS OIL PUMP FIX	2		

CRANK SHAFT, CRANK BRG., PISTON CONN. ROD & FLY WHEEL SHEET 7

<u>KEY #</u>	<u>PART #</u>	<u>DESCRIPTION</u>	<u>Q'TY</u>	<u>REMARKS</u>	<u>UNIT PRICE</u>
1	511510-0100	CRANK BRG KIT; STD	1		
1 1	511530-0100	CRANK BRG KIT; UNSI 0.25	1		
1 2	511540-0100	CRANK BRG KIT; UNSI 0.25	1		
2	911581-0570	THRUST BRG	2		
3	512111-0640	PISTON; STD	3		
3	512111-1370	PISTON; STD	3		
3 1	512114-0640	PISTON; OVSI 0.50	3		
3 1	512114-1370	PISTON; OVSI 0.50	3		
3 2	512116-0640	PISTON; OVSI 1.00	3		
3 2	512116-1370	PISTON; OVSI 1.00	3		
4	512181-0111	PISTON RING KIT; STD	1		
4	512121-0100	RING SET; PISTON	3		
4 1	512184-0111	PISTON RING KIT OVSI 0.50	1		
4 1	512124-0100	RING SET; PISTON OVSI 0.50	3		
4 2	512186-0111	PISTON RING KIT OVSI 1.00	1		
4 2	512126-0100	RING SET; PISTON OVSI 1.00	3		
6	512211-0090	PISTON PIN	3		
7	509587-0010	SNAP RING	6		
8	512230-0280	CONN ROD ASM	3		
9	912251-0620	BUSH; SMALL END	3		
11	512235-0060	BOLT; CONN ROD	6		
13	512271-0050	CONN ROD BRG SET	3		
14 2	912320-6092	CRANK SHAFT ASM	1		
16	912319-0030	BUSH	1		
17	908151-2220	PIN; STRAIGHT	1		
25 1	912330-6190	FLYWHEEL ASM	1		
27	912333-0361	RING GEAR; (T=108)	1		
33 1	509000-0181	BOLT; HEX-HD MF FLYWHEEL	6		
34	512336-0020	WASHER FLYWHEEL FIX	1		
36	908030-7430	KEY FEATHER	1		
37	912521-0420	GEAR; CRANK SHAFT (T=21)	1		
38	912362-0390	OIL THROWER; CRANK SHAFT	1		
60 2	912373-6051	PULLEY, CRANK SHAFT	1		
64 2	909802-6060	BOLT; CRANK PULLEY	1		
69	912379-0160	WASHER; CRANK PULLEY	1		

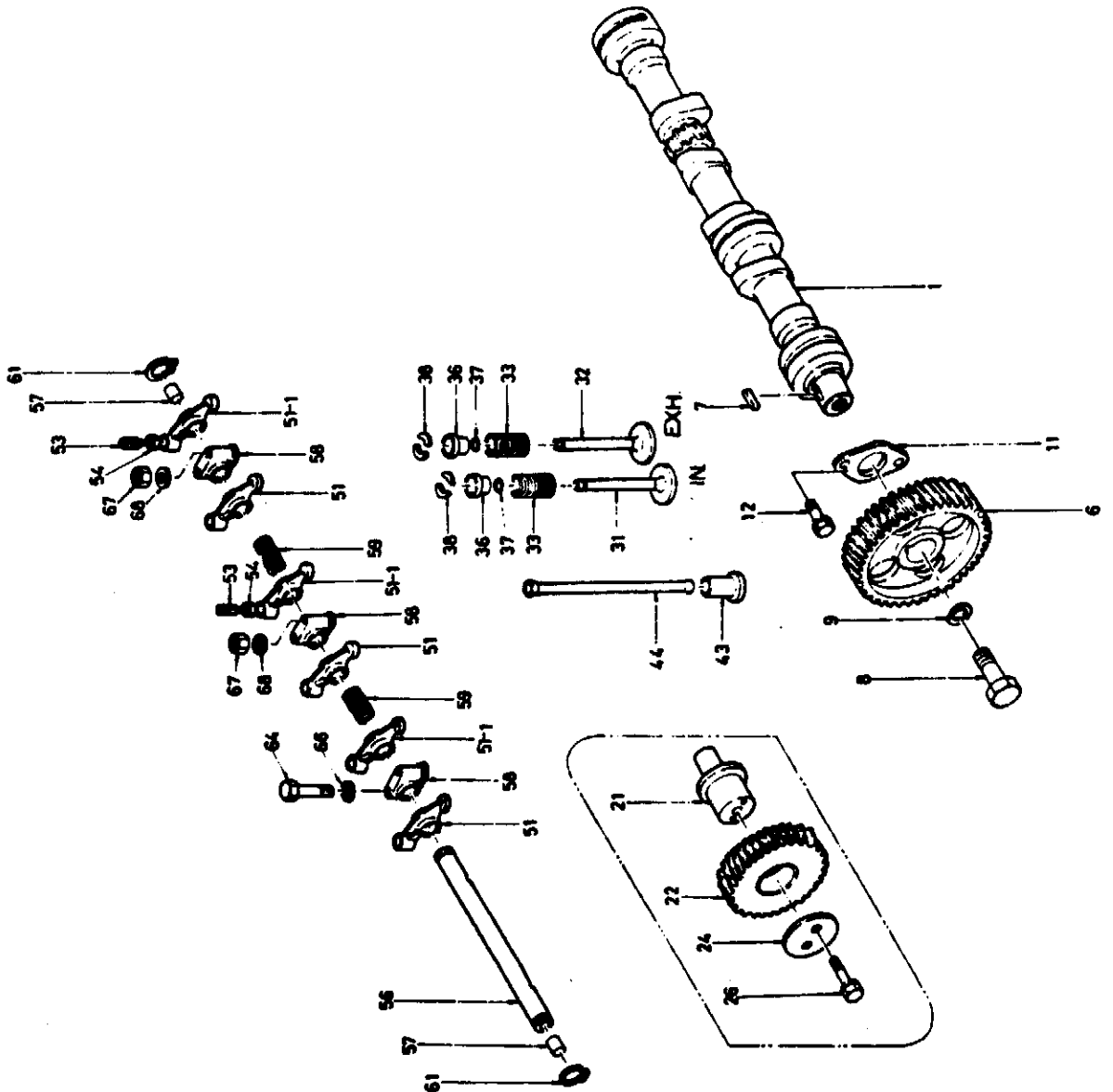
VALVE MECHANISM



CRANK SHAFT, CRANK BRG., PISTON CONN. ROD & FLY WHEEL SHEET 7

<u>KEY #</u>	<u>PART #</u>	<u>DESCRIPTION</u>	<u>Q'TY</u>	<u>REMARKS</u>	<u>UNIT PRICE</u>
1	511510-0100	CRANK BRG KIT; STD	1		
1 1	511530-0100	CRANK BRG KIT; UNSI 0.25	1		
1 2	511540-0100	CRANK BRG KIT; UNSI 0.25	1		
2	911581-0570	THRUST BRG	2		
3	512111-0640	PISTON; STD	3		
3	512111-1370	PISTON; STD	3		
3 1	512114-0640	PISTON; OVSI 0.50	3		
3 1	512114-1370	PISTON; OVSI 0.50	3		
3 2	512116-0640	PISTON; OVSI 1.00	3		
3 2	512116-1370	PISTON; OVSI 1.00	3		
4	512181-0111	PISTON RING KIT; STD	1		
4	512121-0100	RING SET; PISTON	3		
4 1	512184-0111	PISTON RING KIT OVSI 0.50	1		
4 1	512124-0100	RING SET; PISTON OVSI 0.50	3		
4 2	512186-0111	PISTON RING KIT OVSI 1.00	1		
4 2	512126-0100	RING SET; PISTON OVSI 1.00	3		
6	512211-0090	PISTON PIN	3		
7	509587-0010	SNAP RING	6		
8	512230-0280	CONN ROD ASM	3		
9	912251-0620	BUSH; SMALL END	3		
11	512235-0060	BOLT; CONN ROD	6		
13	512271-0050	CONN ROD BRG SET	3		
14 2	912320-6092	CRANK SHAFT ASM	1		
16	912319-0030	BUSH	1		
17	908151-2220	PIN; STRAIGHT	1		
25 1	912330-6190	FLYWHEEL ASM	1		
27	912333-0361	RING GEAR; (T=108)	1		
33 1	509000-0181	BOLT; HEX-HD MF FLYWHEEL	6		
34	512336-0020	WASHER FLYWHEEL FIX	1		
36	908030-7430	KEY FEATHER	1		
37	912521-0420	GEAR; CRANK SHAFT (T=21)	1		
38	912362-0390	OIL THROWER; CRANK SHAFT	1		
60 2	912373-6051	PULLEY, CRANK SHAFT	1		
64 2	909802-6060	BOLT; CRANK PULLEY	1		
69	912379-0160	WASHER; CRANK PULLEY	1		

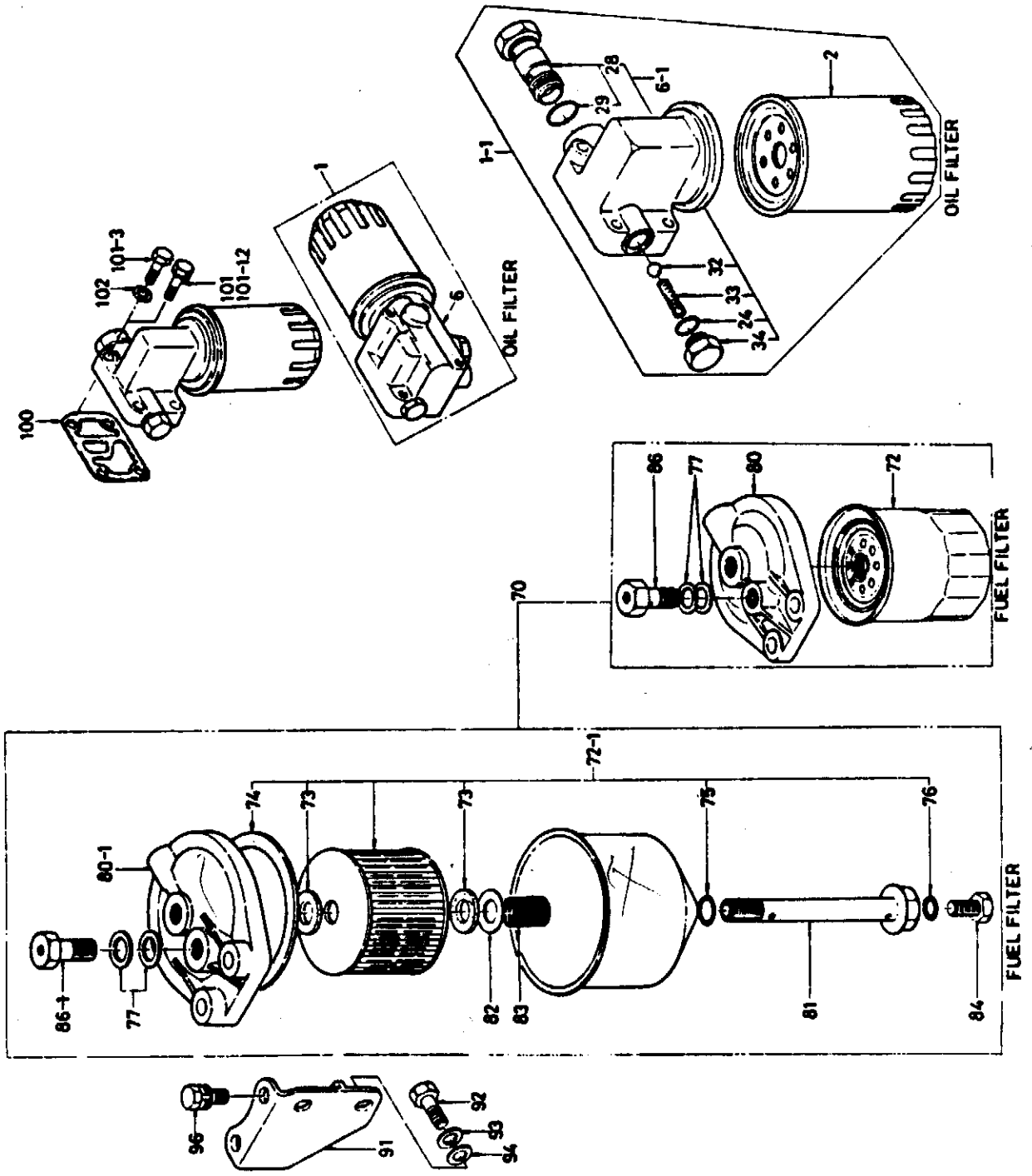
VALVE MECHANISM



VALVE MECHANISM

SHEET 9

KEY #	PART #	DESCRIPTION	Q'TY	REMARKS	UNIT PRICE
1	512511-0220	CAM SHAFT	1		
6	912522-1440	GEAR; CAM, (T=42)	1		
7	908000-7180	KEY; FEATHER	1		
8	509000-0690	BOLT; HEX-HD MF	1		
9	512519-0021	WASHER; TIMING WHEEL	1		
11	911681-0100	THRUST PLATE; CAMSHAFT	1		
12	901900-8160	BOLT; SEMS THRUST PLATE	2		
21	912531-0240	SHAFT IDLE GEAR CYL. BODY	1		
22	912523-0800	GEAR; IDLE, W/BUSH (T=31)	1		
24	512535-0050	THRUST COLLAR	1		
26	509000-0840	BOLT; SEMS	2		
31	912551-8020	INLET VALVE	3		
31	1 512551-0290	INLET VALVE	3		
32	912552-8010	EXHAUST VALVE	3		
33	912561-0370	VALVE SPRING OUT	6		
36	912563-0950	SPRING SEAT ASM	6		
37	912559-0080	SEALING RING; VALVE	6		
38	512565-0040	SPLIT COLLAR	12		
43	912571-8010	TAPPET	6		
44	912575-2080	PUSH ROD	6		
44	1 912575-1680	PUSH ROD	6		
51	912611-3470	ROCKER ARM ASM 'C'	3		
51	1 912611-3490	ROCKER ARM ASM 'D'	3		
53	912616-0230	ADJ. SCREW	6		
54	909111-1080	NUT; HEX MF	6		
56	912621-1270	SHAFT; ROCKER ARM	1		
57	912626-0050	PLUG; ROCKER SHAFT END	2		
58	912628-0930	BKT; ROCKER SHAFT	3		
59	909940-6070	SPRING; COMP	2		
61	909180-0190	SNAP RING; C TYPE EXT	2		
64	901050-8500	BOLT; HEX-HD MF BRKT. FIX	4		
66	909164-0080	WASHER; PLAIN	4		
67	909110-5080	NUT; HEX-HD MF. ROCKER BRKT	2		
68	909164-5080	WASHER; PLAIN	2		

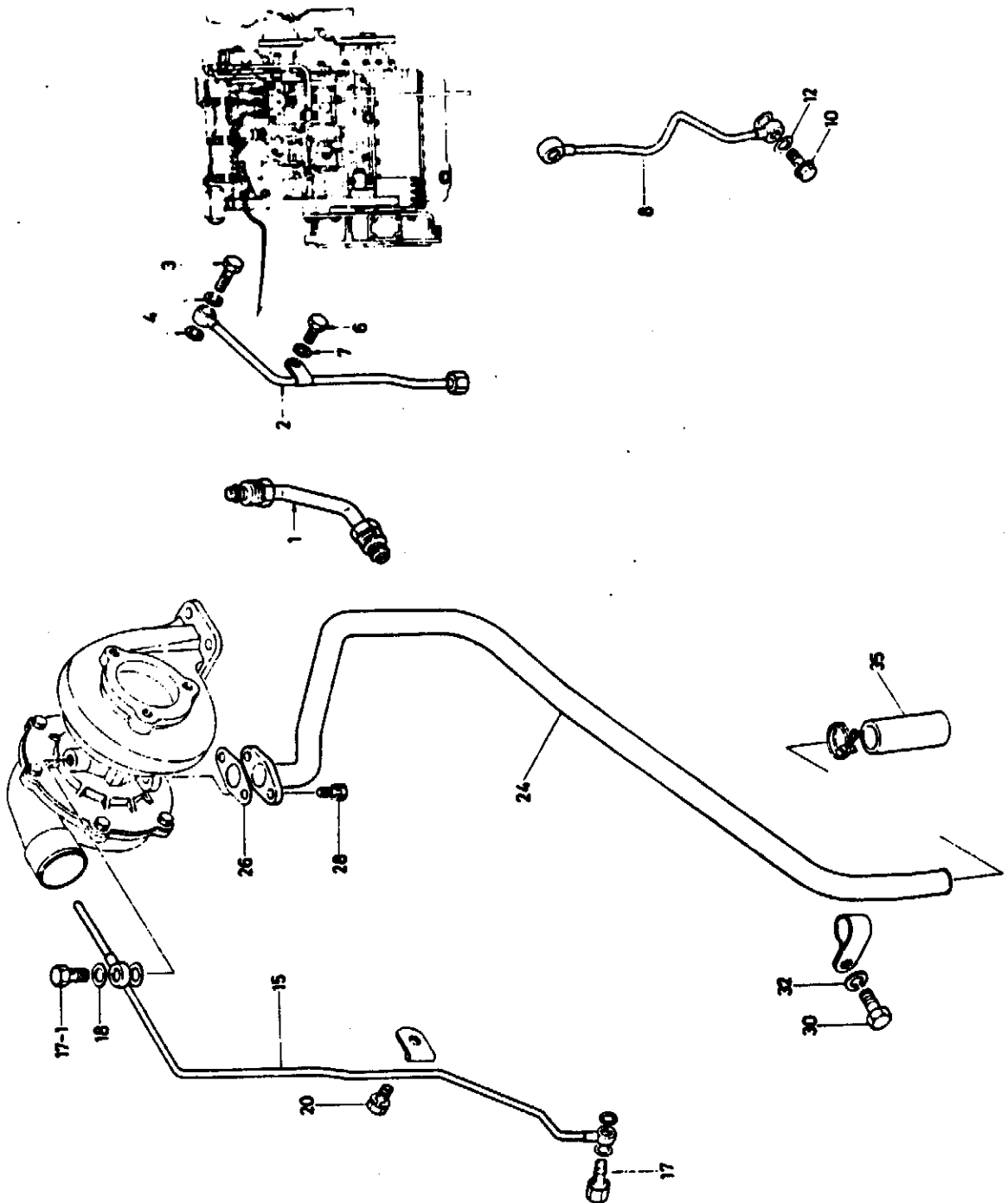


OIL FILTER, FUEL FILTER & FIXING PARTS

SHEET 10

KEY #	PART #	DESCRIPTION	Q'TY	REMARKS	UNIT PRICE
1	1	913201-8121	OIL FILTER ASM	1	
2		913240-8041	OIL FILTER ASM; CARTRIDGE	1	
6	1	913160-0810	COVER ASM; W/RELIEF AND S	1	
24		909920-8410	PACKING; O-RING	1	
28		913160-0680	RELIEF VALVE ASM	1	
29		909920-5250	PACKING; O-RING	1	
32		900097-0110	BALL; SAFETY VALVE	1	
33		909940-5820	SPRING; COIL	1	
34		913263-0110	CAP; VALVE SPRING	1	
70		513200-0531	FUEL FILTER; CARTRIDGE	1	
70		513200-1190	FUEL FILTER; CARTRIDGE	1	
72		513240-0230	ELEMENT ASM; CARTRIDGE	1	
77		909572-0140	PACKING; VALVE	2	
80		513212-0172	COVER; FUEL FILTER	1	
86		913260-0561	OVER FLOW VALVE ASM, FUEL	1	
91		919751-8010	BKT; FUEL FILTER	1	
92		902060-8180	BOLT; BKT TO CYL. HEAD	2	
93		909150-6080	SPRING WASHER	2	
94		909164-5080	WASHER; PLANE	2	
96		901971-0350	BOLT; SEMS, FUEL FILTER FIX	2	
100		913219-0770	PACKING; OIL FILTER TO CY	1	
101		901900-8350	BOLT; SEMS OIL FILTER	3	
101	2	901900-8450	BOLT; SEMS OIL FILTER	1	

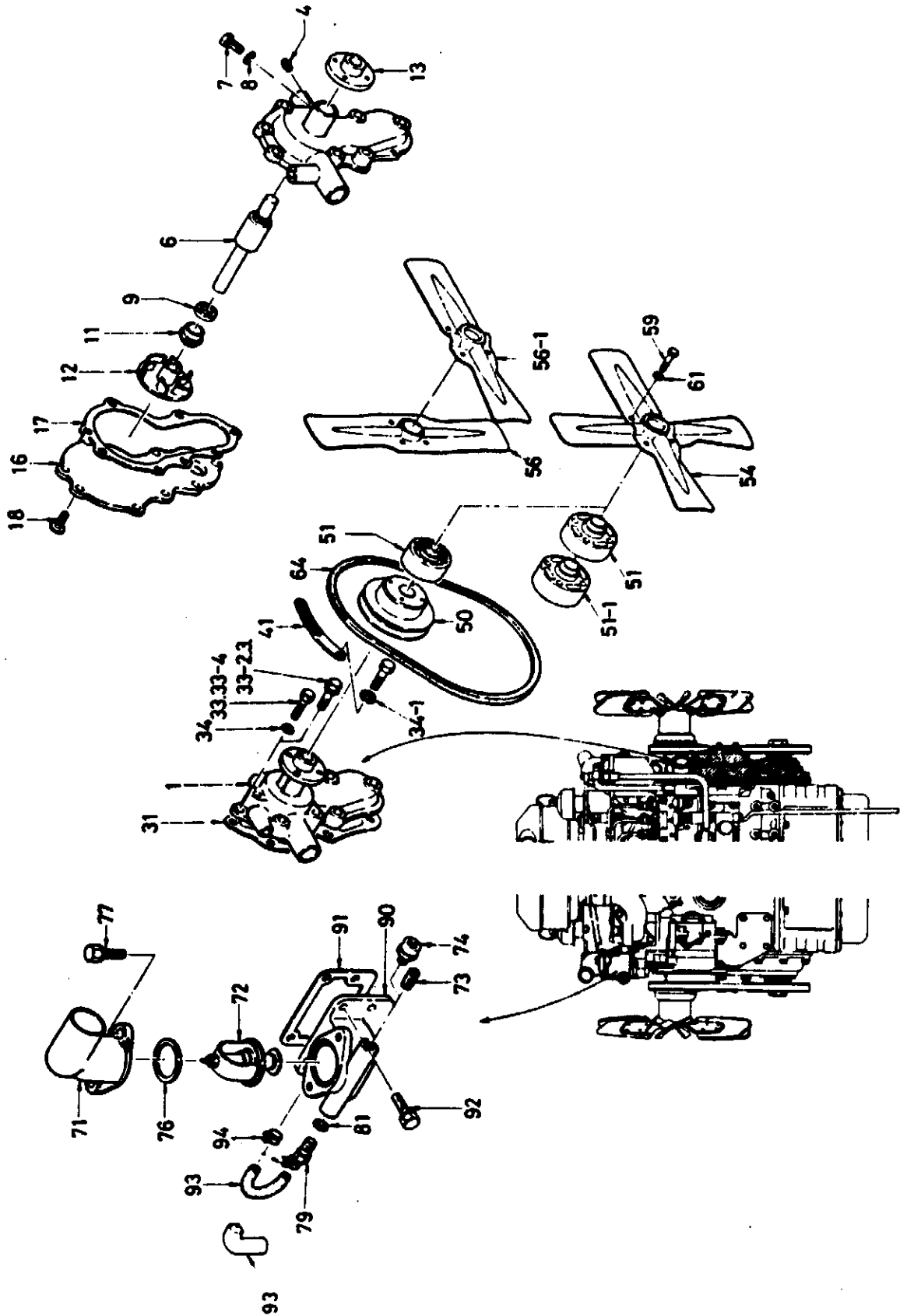
OIL PIPE & OTHER PARTS



OIL PIPE & OTHER PARTS

<u>KEY #</u>	<u>PART #</u>	<u>DESCRIPTION</u>	<u>Q'TY</u>	<u>REMARKS</u>	<u>UNIT PRICE</u>
1	913312-3250	OIL PIPE ASM; OIL PUMP	1		
2	1 913312-3380	OIL PIPE ASM; ROCKER OIL	1		
3	909906-1051	JOINT BOLT	1		
4	909920-9000	PACKING	2		
6	902040-8140	BOLT; HEX-HD MF, ROCKER	1		
7	909150-5080	SPRING WASHER	1		

COOLING SYSTEM (FAN, WATER)

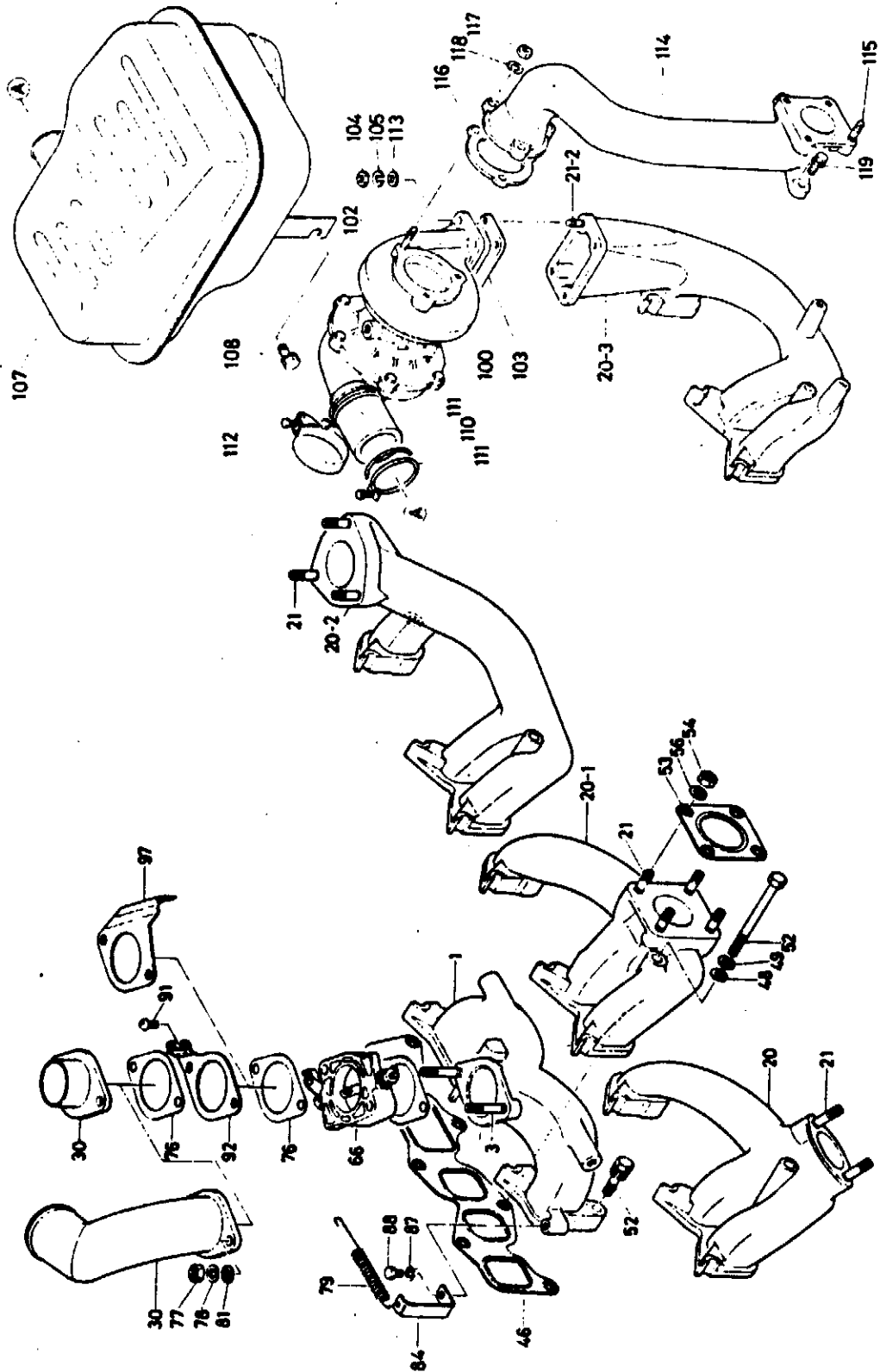


COOLING SYSTEM (FAN, WATER)

SHEET 12

<u>KEY #</u>	<u>PART #</u>	<u>DESCRIPTION</u>	<u>Q'TY</u>	<u>REMARKS</u>	<u>UNIT PRICE</u>
1	513610-0541	WATER PUMP ASM	1		
4	909204-5170	PLUG; SCREW, HEATER	1		
6	513631-0050	BRG UNIT	1		
7	909814-0140	SET SCREW	1		
7	909814-40141	SET SCREW	1		
8	909150-5080	SPRING WASHER	1		
9	913639-0010	THROWER; BRG UNIT	1		
11	903620-0160	SEAL UNIT ASM	1		
12	913621-0760	IMPELLER	1		
13	913642-0800	CENTER; FAN	1		
16	913612-0530	COVER; WATER PUMP BODY	1		
17	913613-6070	PACKING; COVER TO BODY	1		
18	903040-8160	SCREW; SLOTTED CK-HD	1		
31	913614-0430	PACKING; PUMP TO CYL. BODY	1		
33	901056-0550	BOLT; HEX-HD MF ADJP-BODY	1		
33 2	509000-0880	BOLT; SEMS	4		
33 3	509000-0890	BOLT; SEMS	1		
34 1	909150-5100	SPRING WASHER	1		
41	913675-8040	ADJ PLATE, FAN BELT	1		
50	913641-6160	PULLEY	1		
51	913642-0780	SPACER; FAN	1		
54 2	913660-8090	FAN ASM; D=380, 6 BLADE	1		
59 1	901055-8500	BOLT; HEX-HD MF FAN TO PU	4		
61 1	909150-5080	SPRING WASHER	4		
64 2	913671-8080	BELT; COOLING FAN L=988	1		
71 1	913713-0641	WATER OUTLET PIPE	1		
72	513770-0220	THERMOSTAT	1		
73	909204-5170	PLUG; HEATER	1		
76	509637-0130	PACKING; OUTLET PIPE TO H	1		
77 1	901910-8280	BOLT; SEMS OUTLET PIPE	2		
79	909661-0050	PLUG; THERMOMETER	1		
81	909571-3160	PACKING; PLUG	1		
90	513716-0280	HOUSING; THERMOSTAT	1		
91	913743-0050	PACKING; HOUSING TO HEAD	1		
92	901900-8200	BOLT; SEMS HOUSING	2		
92 2	901900-8220	BOLT; SEMS HOUSING	2		
93	913721-1320	RUBBER HOSE; BY PASS	1		
94	909915-6440	CLIP; HOSE	2		

AIR INTAKE & EXHAUST SYSTEM

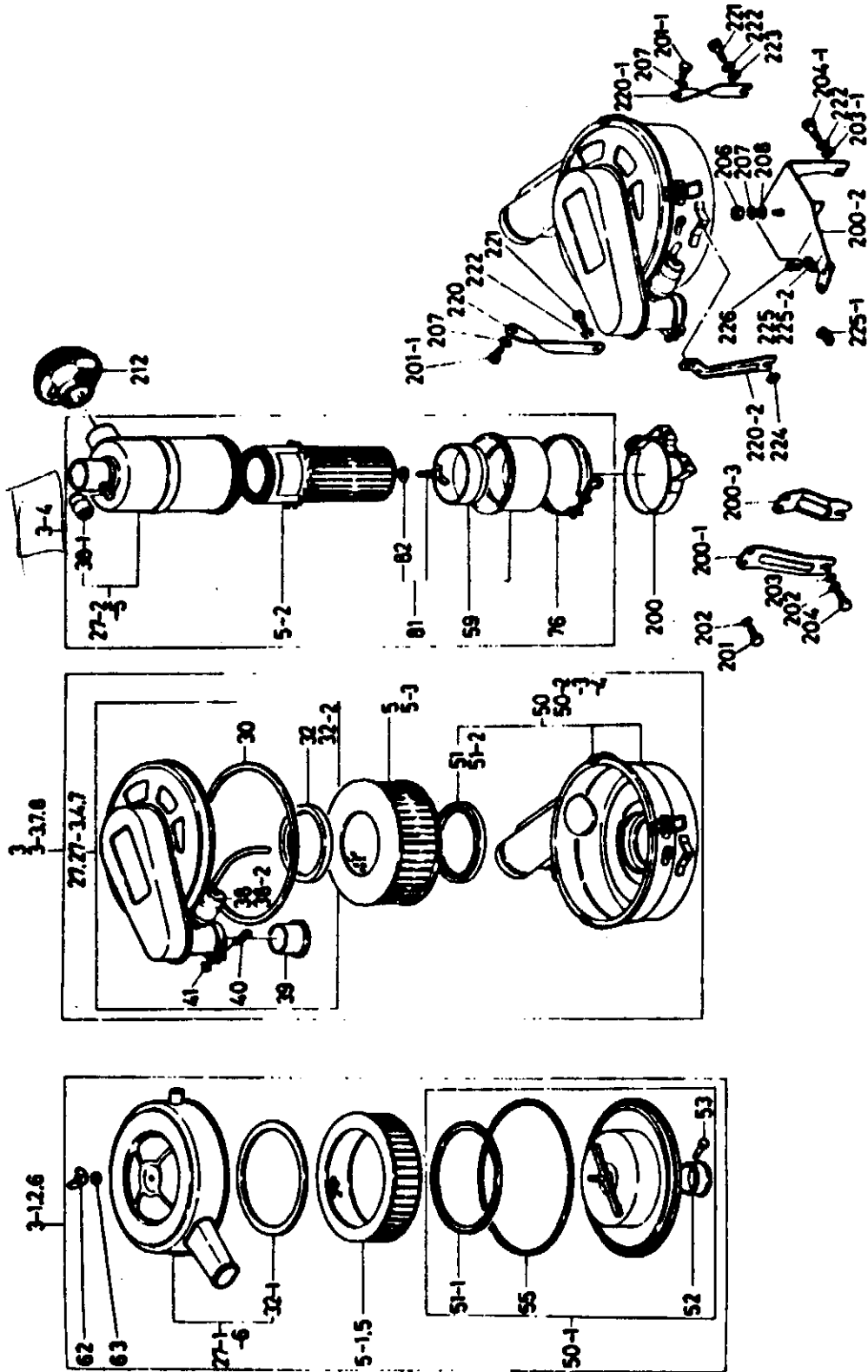


AIR INTAKE & EXHAUST SYSTEM

SHEET 13

<u>KEY #</u>	<u>PART #</u>	<u>DESCRIPTION</u>	<u>Q'TY</u>	<u>REMARKS</u>	<u>UNIT PRICE</u>
1	1	914112-6551	1		
3		904100-8480	2		
20	1	514141-0060	1		
21		904110-8300	4		
30		514111-0850	1		
46		914146-0900	1		
48		909164-5080	1		
49		909150-5080	1		
52		901960-8350	6		
52	1	901045-8950	1		
53		914145-8020	1		
54		909640-0190	4		
56		909164-5080	4		
66	3	914310-4191	1		
76		909921-0600	2		
76		509637-0150	2		
76	1	909921-0600	1		
76	1	509637-0150	1		
77		909110-4080	2		
78		909150-5080	2		
79	1	909942-6000	1		
84	1	514334-0010	1		
87	1	909150-5060	1		
88	1	902040-6100	1		
91	1	993440-4120	1		
92	1	914319-6260	1		

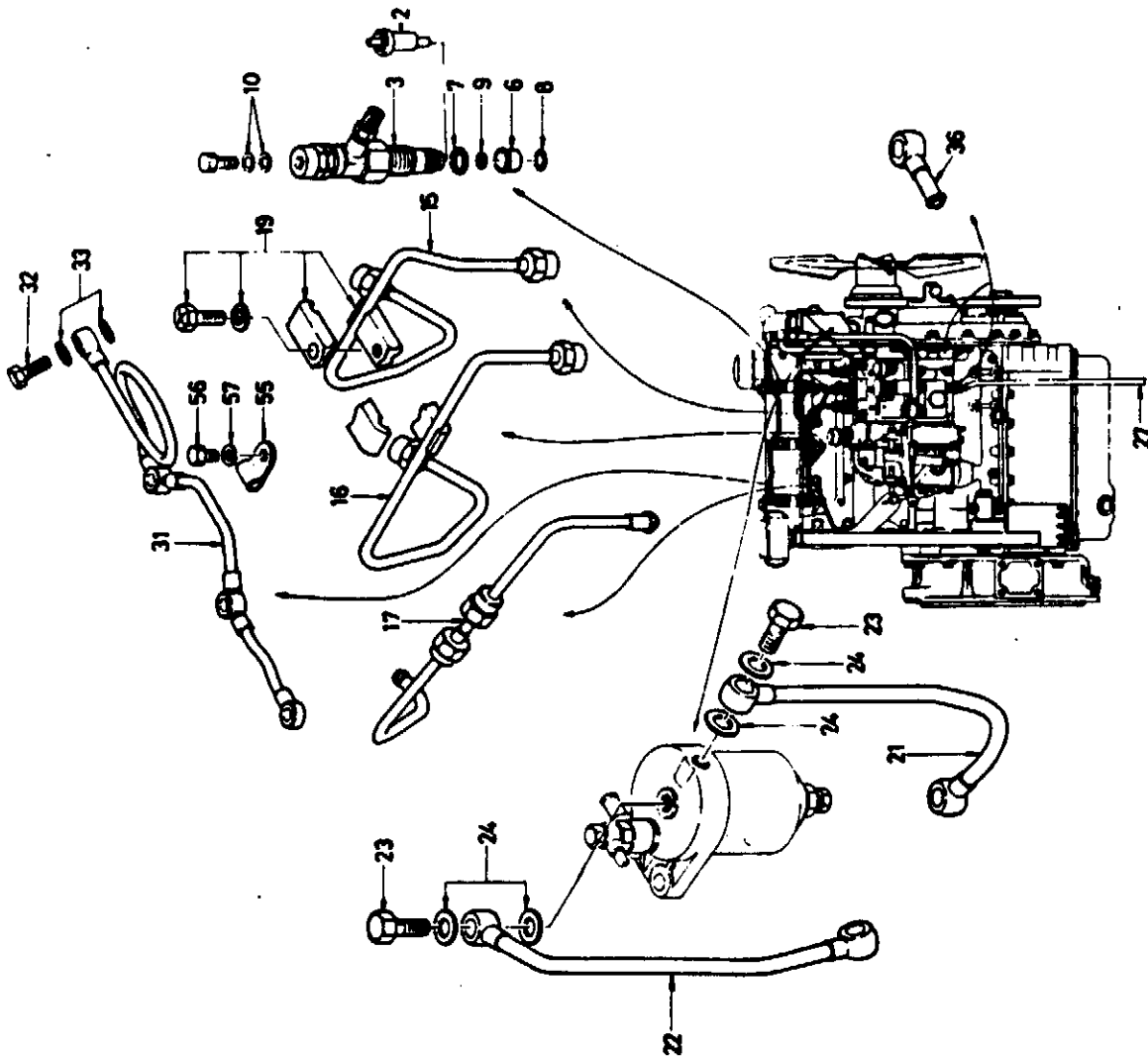
AIR CLEANER & OTHER PARTS



AIR CLEANER & OTHER PARTS

<u>KEY #</u>	<u>PART #</u>	<u>DESCRIPTION</u>	<u>Q'TY</u>	<u>REMARKS</u>	<u>UNIT PRICE</u>
5	2	514215-0140		ELEMENT ASM.	1
27	3	514212-0150		COVER ASM.	1
30		914213-0110		PACKING; COVER - CASE	1
32		914213-6120		PACKING; COVER - ELEMENT	1
38		914219-6170		INDICATOR	1
39		914239-0280		PACKING; COVER	1
40		993470-5250		BOLT	1
41		909844-6310		NUT; SQUARE	1
51		914213-6120		PACKING; BODY - ELEMENT	1
200		914217-6020		BAND ASM.; W/BOLT	2
212		914219-6070		CAP ASM.; AIR INLET, W/BOL	1
221		901900-8140		BOLT; SEMS STAY-CYL. HEAD	2
222		909150-5080		WASHER SPR.	4

FUEL SYSTEM (INJ. NOZZLE, FUEL PIPE)

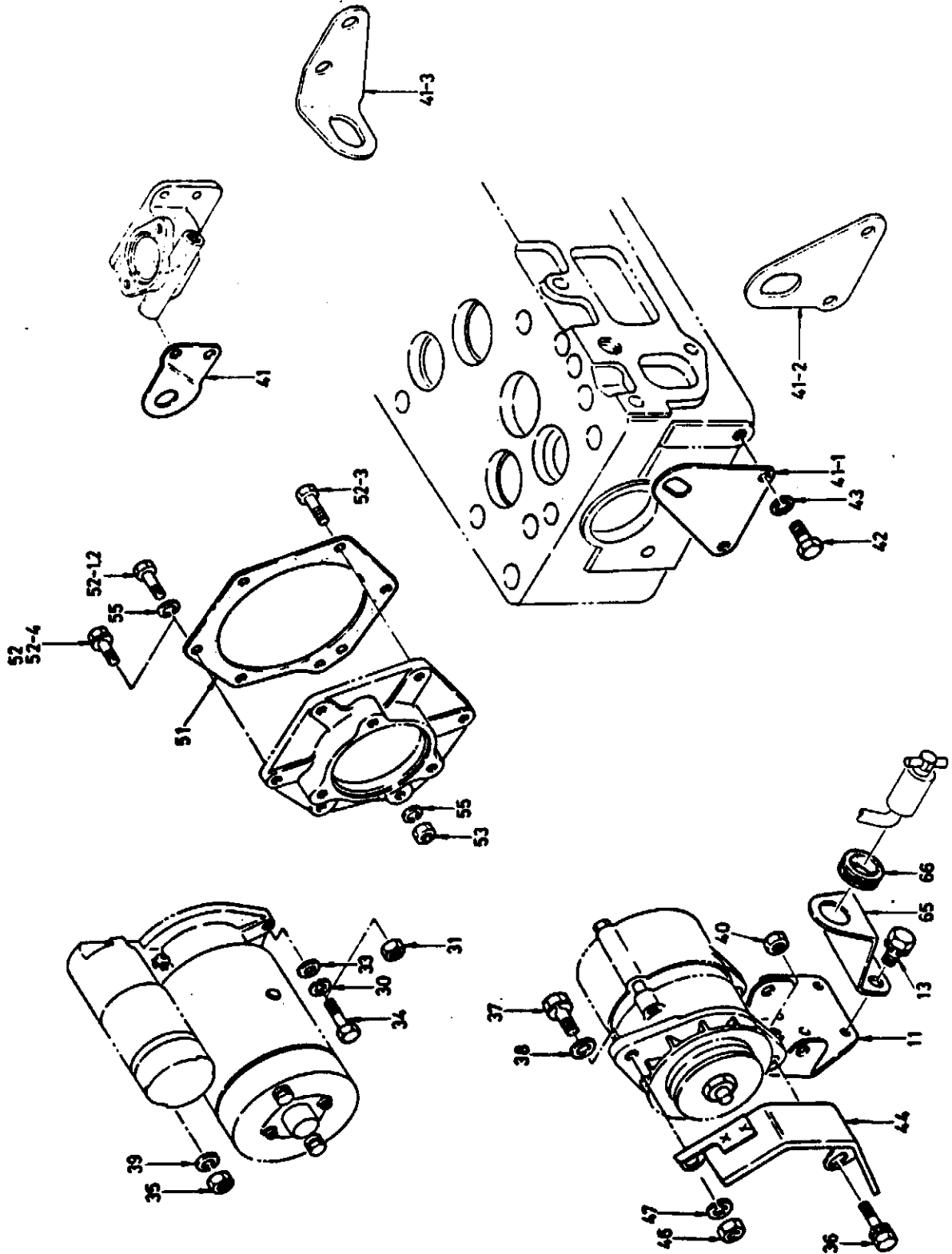


FUEL SYSTEM (INJ. NOZZLE, FUEL PIPE)

SHEET 15

KEY #	PART #	DESCRIPTION	Q'TY	REMARKS	UNIT PRICE
2	515311-0060	NOZZLE	3		
3	515330-0030	NOZZLE HOLDER	3		
6	915315-0270	NOZZLE HEAT SHIELD INJ NO	3		
7	915315-0260	WASHER NOZZLE HOLDER	3		
8	915315-0280	WASHER HEAT SHIELD	3		
9	915315-0740	CORRUGATED WASHER ATOMISE	3		
10	909571-4080	PACKING	6		
15	515411-4430	INJ. PIPE ASM; NO.1	1		
16	915421-6660	INJ PIPE ASM; NO.2	1		
17	1 915421-7020	INJ PIPE ASM; NO.3	1		
19	915419-0720	CLIP ASM	2		
21	1 915421-7030	FUEL PIPE ASM; PUMP - FILT	1		
22	1 915421-6680	FUEL PIPE ASM; FILT - PUMP	1		
23	909906-3251	JOINT BOLT; FUEL FILTER	2		
24	909572-0140	PACKING; JOINT BOLT	4		
27	909913-8460	VINYL PIPE INJ. PUMP LEAK	1		
31	515411-2560	FUEL PIPE ASM; NOZZLE LE	1		
32	909906-3141	JOINT BOLT; LEAK OFF PIPE	1		
33	909571-4080	PACKING; PIPE JOINT	2		
36	515411-2230	PIPE ASM; FUEL IN. RETURN	2		

ENGINE FOOT, HANGER & FIXING PARTS

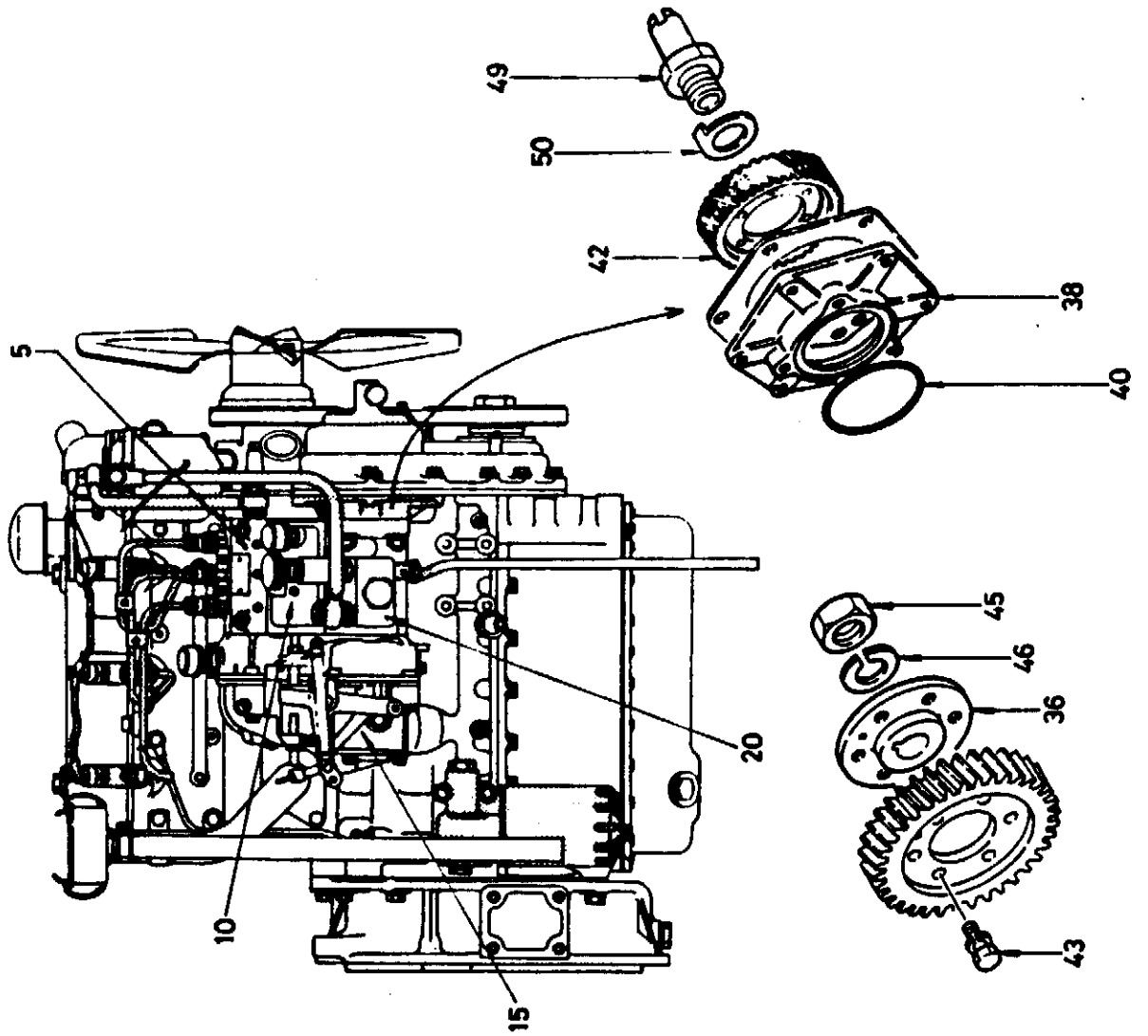


ENGINE FOOT, HANGER & FIXING PARTS

SHEET 16

<u>KEY #</u>	<u>PART #</u>	<u>DESCRIPTION</u>	<u>Q'TY</u>	<u>REMARKS</u>	<u>UNIT PRICE</u>
11	919711-6010	BKT; GENERATOR	1		
13	1 901911-0200	BOLT; SEMS BKT	4		
30	909150-5120	SPRING WASHER; STARTER FIX	2		
33	909160-5120	WASHER; PLANE, STARTER FIX	2		
34	902351-2320	BOLT; HEX-HD MC STARTER F	2		
35	909111-4080	NUT; STARTER B	1		
36	901970-8300	BOLT; SEMS GENERATOR	2		
37	901910-8200	BOLT; SEMS ADJ. PLATE	1		
38	909164-7080	WASHER; PLATE, ADJ. PLATE	1		
39	909150-5080	SPRING WASHER; STARTER B	1		
40	909110-5080	NUT; HEX-HD MF, GENERATOR	2		
41	511777-0040	HANGER; ENGINE LIFTING	1		
41	1 911777-1521	HANGER; ENGINE LIFTING	1		
42	902040-8180	BOLT; HEX-HD MF, HANGER FIX	2		
43	909150-5080	SPRING WASHER	2		
51	511319-0570	PACKING; BKT TO PLATE F	1		
52	901910-8320	BOLT; SEMS INJ. PUMP	4		
52	3 901055-8750	BOLT; INJ. PUMP	2		
55	909150-5080	SPRING WASHER, INJ. PUMP	2		

INJECTION PUMP & OTHER PARTS

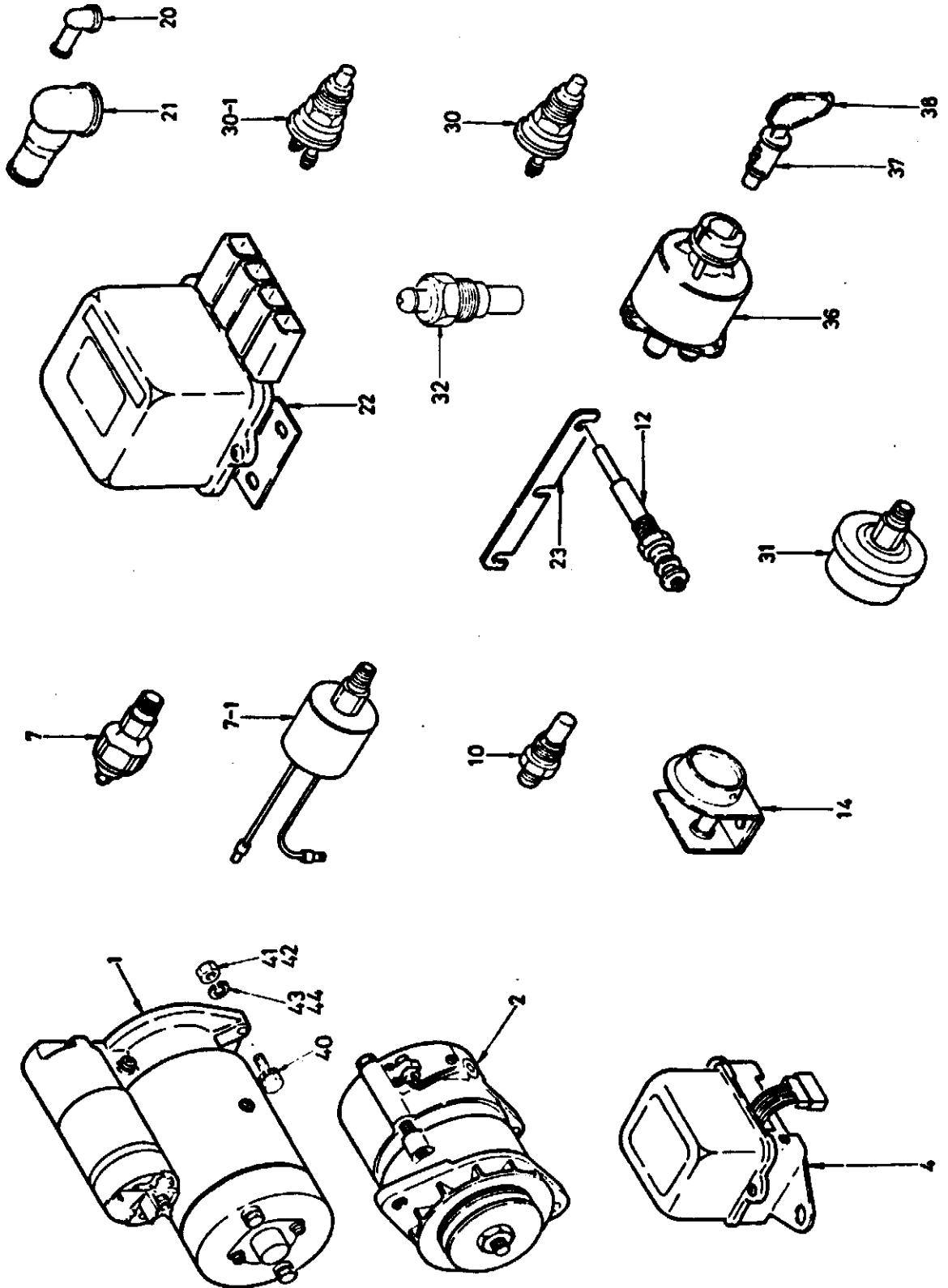


INJECTION PUMP & OTHER PARTS

SHEET 18

<u>KEY #</u>	<u>PART #</u>	<u>DESCRIPTION</u>	<u>Q'TY</u>	<u>REMARKS</u>	<u>UNIT PRICE</u>
5	4	515600-4890		INJECTION PUMP ASM; FUEL	1
10		515610-0350		INJ. PUMP; PROPER "A" FIG.52	1
15	3	981320-5100		GOVERNOR; FIG. 53B	1
20	1	981350-5030		FEED PUMP; FIG.54	1
36		515781-0020		COUPLING; PUMP SIDE	1
38		919751-0790		BKT; INJ. PUMP	1
40		909920-5760		PACKING; O-RING	1
42		512524-0380		GEAR; INJ. PUMP (T=42)	1
43		901900-6140		BOLT; GEAR-COUPLING	6
45		515619-0270		NUT; COUPLING FIX	1
46		515789-0010		SP WASHER; COUPLING FIX	1
50		515789-0020		LOCK PLATE; ADAPTER	1

ELECTRICAL PARTS

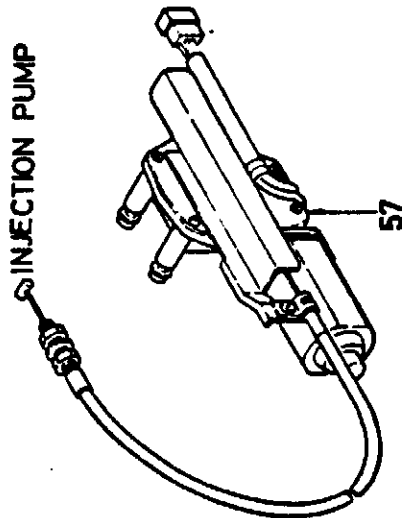
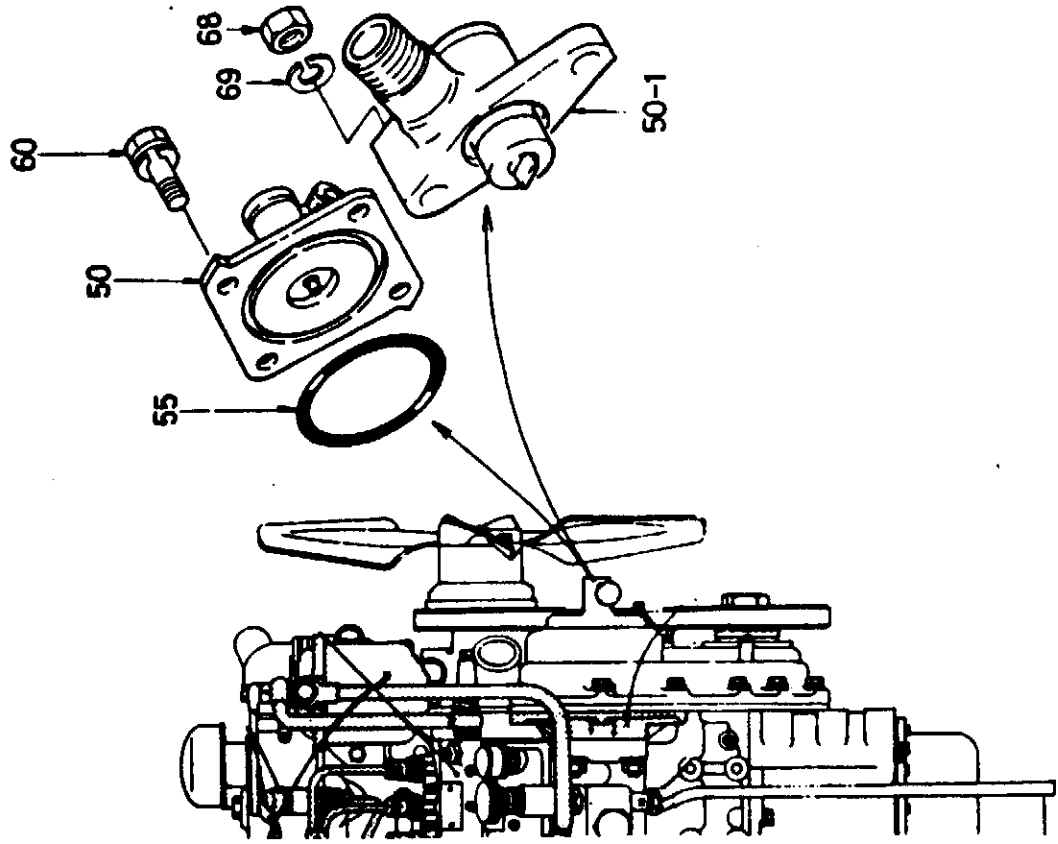


ELECTRICAL PARTS

SHEET 19

<u>KEY #</u>	<u>PART #</u>	<u>DESCRIPTION</u>	<u>Q'TY</u>	<u>REMARKS</u>	<u>UNIT PRICE</u>
1	581100-0990	STARTER; HITACHI FIG.62E	1		
2	581200-1100	GENERATOR; NIKKO FIG.63B	1		
4	1 982250-1130	REGULATOR; NIKKO	1		
7	582410-0121	SWITCH, OIL PRESS WARNING	1		
12	982511-9780	GLOW PLUG; SHEATHED TYPE	3		
14	982530-1010	CONTROL RESISTANCE	1		
23	919732-0750	CONNECTOR	1		
40	2 901931-2400	BOLT; SEMS STARTER FIX	2		
42	909111-4080	NUT;	1		
43	909150-5080	WASHER; SPR	1		

ENGINE ACCESSORY PARTS



ENGINE ACCESSORY PARTS

SHEET 20

<u>KEY #</u>	<u>PART #</u>	<u>DESCRIPTION</u>	<u>Q'TY</u>	<u>REMARKS</u>	<u>UNIT PRICE</u>
50	983910-0590	TACHOMETER DRIVE ASM	1		
55	909920-5760	PACKING; TACHOMETER DRIVE	1		
60	901900-8200	BOLT; SEMS TACHO DRIVE	4		

CC

C

C

C

CC

1