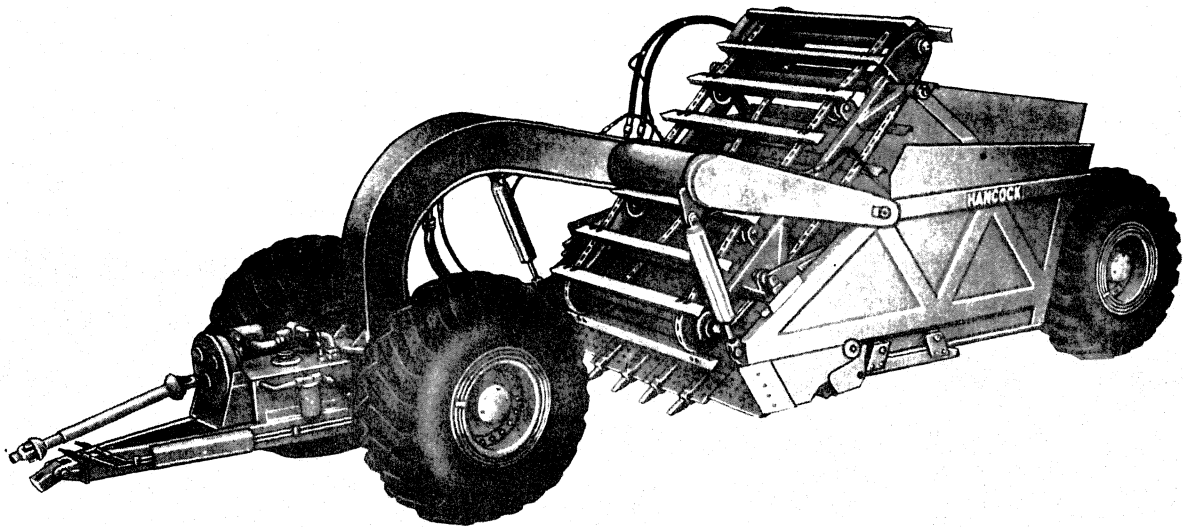


PARTS CATALOG

HANCOCK

ELEVATING SCRAPER

Model 11E4



CLARK EQUIPMENT COMPANY
HANCOCK DIVISION

P.O. Box 1859 Lubbock, Texas 79408



ORDERING INSTRUCTIONS

In order to offer more assistance in determining your parts needs, we use exploded view drawings in our parts illustrations. Each illustrated page is complete with reference numbers, and the accompanying parts list identifies each part by use of these numbers. **DO NOT USE THESE REFERENCE NUMBERS** when ordering parts. The effectivities are listed on the top of the parts list page if the entire page is affected. When individual parts are affected, the part description will be followed by a symbol and the effectivities listed at the bottom of the page. The terms **RIGHT HAND** and **LEFT HAND**, are designated with the letters **RH** and **LH** refer to the viewpoint from the rear of the scraper, looking forward. The letters **N.S.** indicate that this part is **NOT SHOWN**. The letters **A.R.** are used to abbreviate **AS REQUIRED**.

SERIAL NUMBER

Always, when ordering parts for the tractor or scraper, send the complete serial number. We, therefore, are in a better position to fill the order correctly with more promptness. The tractor serial number is stamped on the outside of the tractor main frame directly behind the left drive wheel. The scraper serial number is located on the tail frame just behind the left rear wheel.

PART NUMBER AND DESCRIPTION

When ordering, always give the part number, the description of each part, and the amount required. Should the correct part number and description be doubtful, send an accurate sketch, or return the part(s) to be replaced, transportation prepaid.

SHIPMENT

Unless instructed otherwise, shipments will be made via motor freight **COLLECT** or parcel post prepaid and **CHARGED** on our invoice. Shipments cannot be made on open account until your credit has been approved by our Accounting Department.

MINIMUM CHARGE

A minimum order of \$5.00 net, excluding transportation charges, will be handled. Avoid this by grouping small orders when possible.

SCHEDULE OF SHIPMENTS

Usually, shipments will be made on the following schedule:

Telephone or Telegraph Orders.....24 hours
Mail Orders..... 7 days
Stock Orders.....15 days

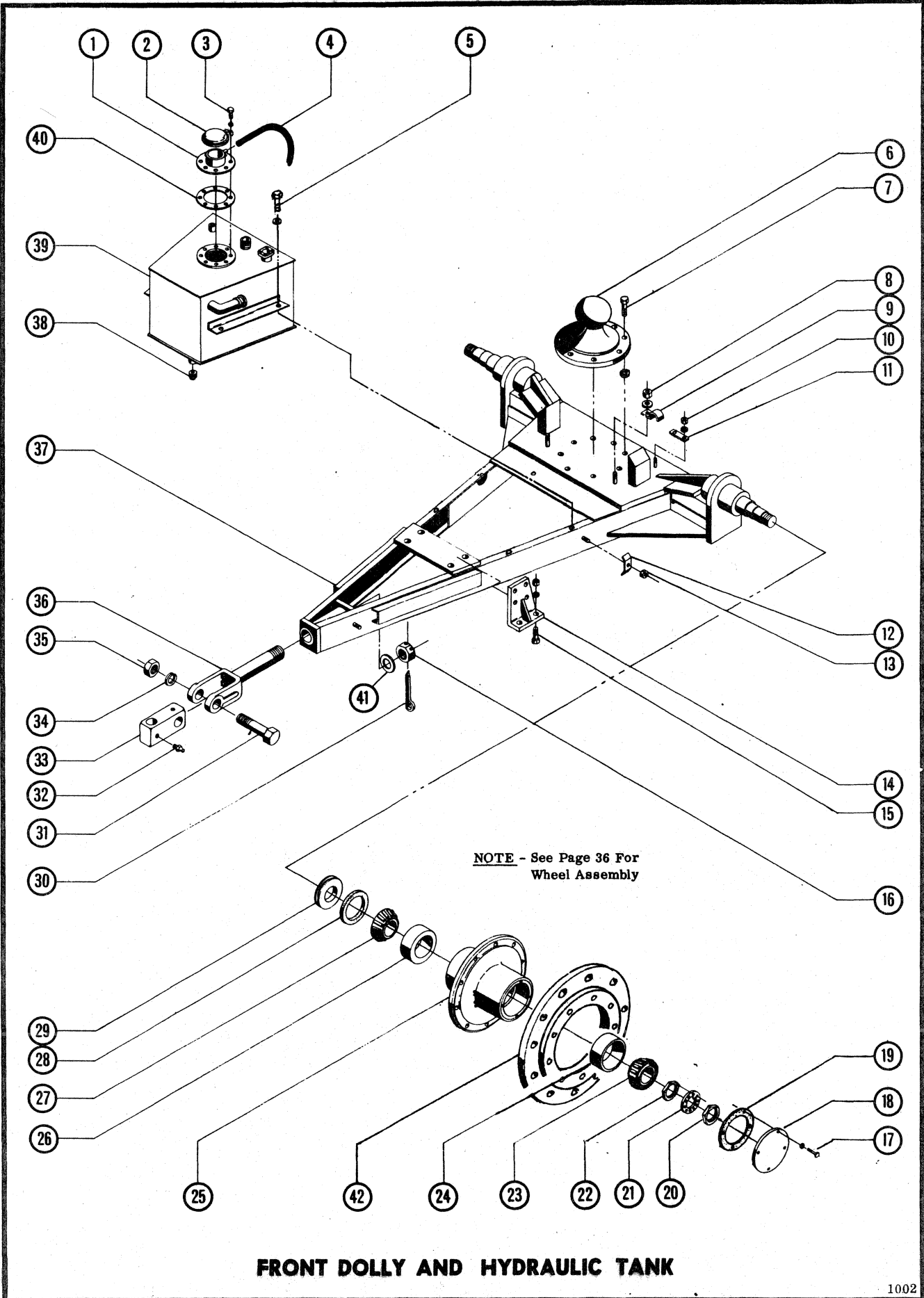
Please furnish as much information as possible in order to expedite the quickest, most correct, filling of your order. Fill in the necessary information below in order to save time when ordering.

TRACTOR SERIAL NUMBER _____

SCRAPER SERIAL NUMBER _____

DATE OF PURCHASE _____

ALWAYS STATE MODEL AND SERIAL NUMBER, WHEN ORDERING PARTS



FRONT DOLLY AND HYDRAULIC TANK



HANCOCK DIVISION

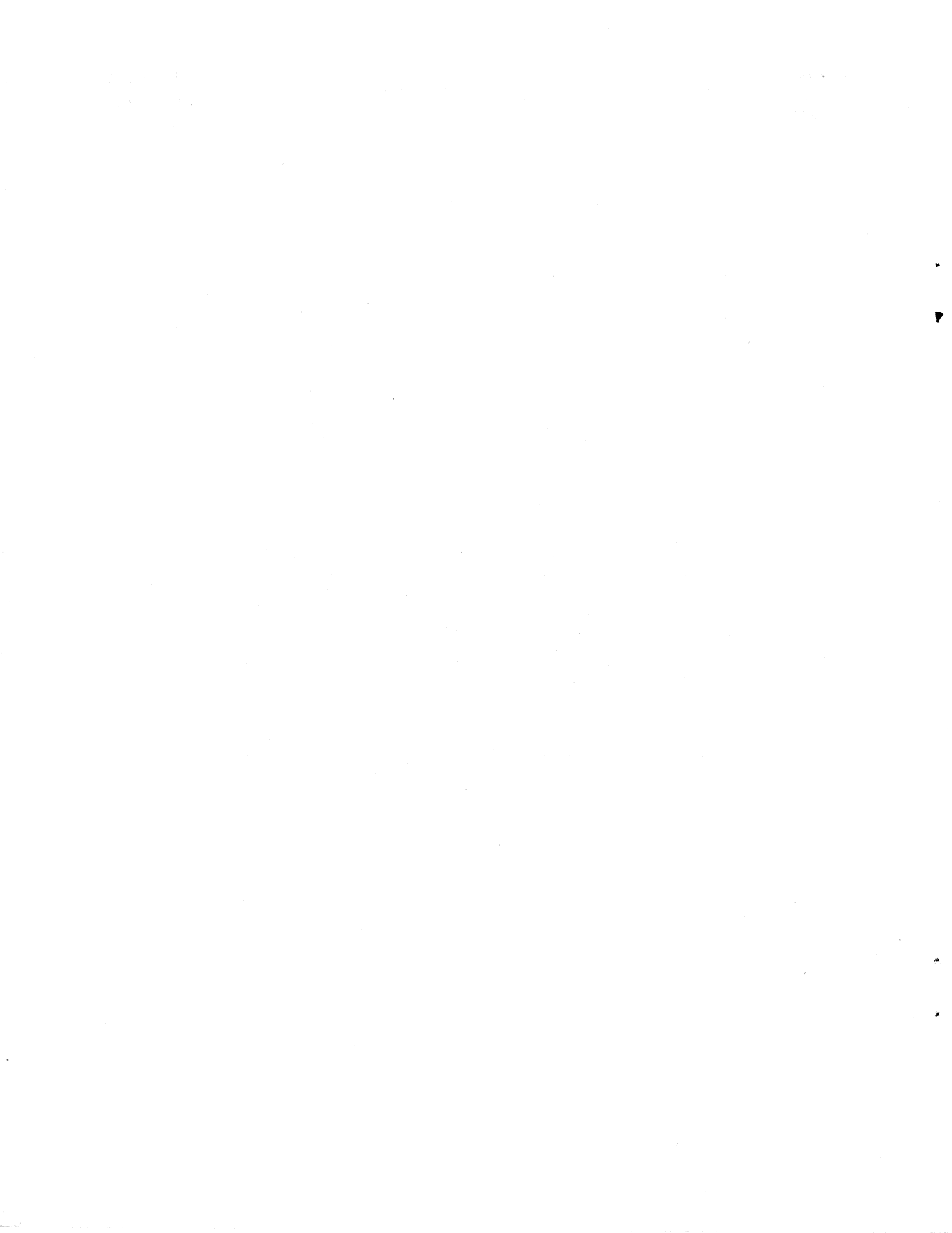


Page 5

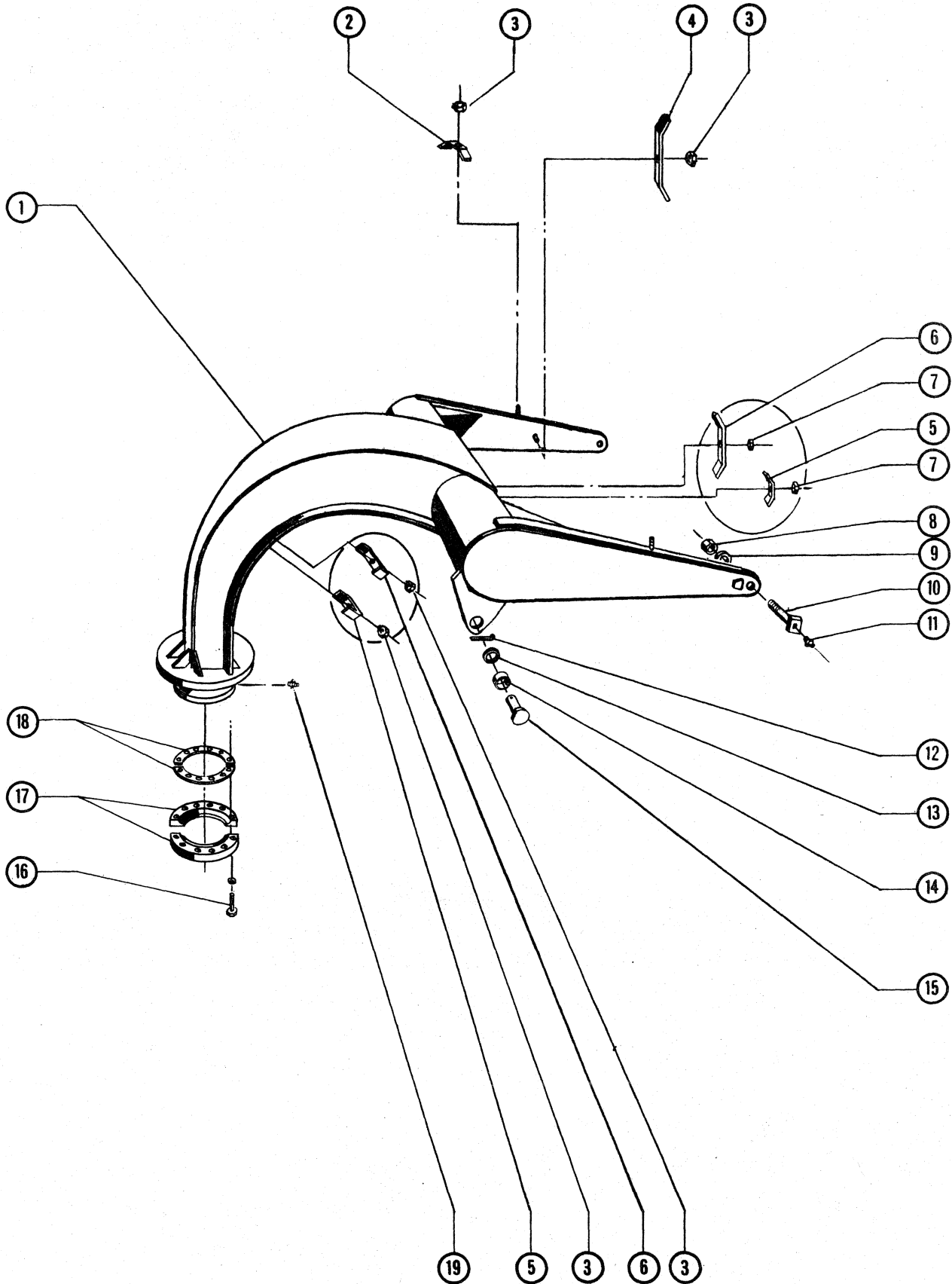
FRONT DOLLY AND HYDRAULIC TANK

	Old Number	New Number		Old Number	New Number
1	223-315-069	1576160	19	407-161-002	1559739
2	-----	554843	20	412-900-004	1552279
3	801-112-125	1C-632	21	412-900-003	1552013
	803-712-000	202321	22	412-900-002	1568668
4	208-906-093	1562459	23	903-031-901	1313683
5	820-900-237	1550938	24	902-059-101	710990
	802-314-000	703891	25	407-166-001	1559744
6	401-210-016	1559513	26	902-063-801	711368
7	801-117-187	17C-1232	27	903-035-001	662739
	802-517-000	4E-12	28	401-161-027*	1559149
8	803-112-003	17D-3	29	401-161-026*	1559148
	802-312-000	619024	30	803-410-240	1F-856
9	201-210-023	1557806	31	401-181-074	1559396
10	803-112-003	17D-3	32	219-901-001	1550756
	802-312-000	619024	33	401-181-005	1559328
11	201-210-022	1557805	34	802-525-000	4E-28
12	201-270-001	1557908	35	802-825-003	61D-28
13	803-112-003	17D-3	36	401-181-002	1559325
14	401-210-026	1559522	37	401-210-001	1559498
NS	401-210-027	1559523	38	212-905-101	565102
15	801-116-175	1C-1028	39	223-210-033	1558565
	802-516-000	4E-10	40	201-301-050	1557962
	802-816-003	61D-10	41	401-181-006	1559329
16	803-0270994	1575739	NS	802-327-000	1313867
17	801-112-145	2C-616	42	Deleted	
	802-512-000	4E-6	*	401-161-025	1559147
18	407-161-001	1559738			

Grease Seal Assembly includes items 28 & 29.



REF.	PART NUMBER	DESCRIPTION	QTY.	REF.	PART NUMBER	DESCRIPTION	QTY.
		<u>FRONT DOLLY AND HYDRAULIC TANK</u>					
1	223 315 069	Neck, Filler	1	18	407 161 001	Cover, Hub	2
2	000 554 843	Cap, Hydraulic Tank	1	19	407 161 002	Gasket, Cover	2
3	801 112 125	Capscrew	8	20	412 900 004	Nut, Outer Spindle	2
	803 712 000	Flatwasher, Copper	8	21	412 900 003	Nut, Spindle Lock	2
4	208 906 093	Hose, Drain - 3/8 x 16	1	22	412 900 002	Nut, Inner Spindle	2
5	820 900 237	Capscrew	4	23	903 031 901	Cone, Bearing	2
	802 314 000	Flatwasher	4	24	902 059 101	Cup, Bearing	2
6	401 210 016	Ball Assembly	1	25	407 166 001	Hub, Wheel	2
7	801 117 187	Capscrew	8	26	902 063 801	Cup, Bearing	2
	802 517 000	Lockwasher	8	27	903 035 001	Cone, Bearing	2
8	803 112 003	Locknut	2	28	401 161 027	Seal, Felt*	2
	802 312 000	Flatwasher	2	29	401 161 026	Retainer, Seal*	2
9	201 210 023	Clamp	2	30	803 410 240	Pin, Cotter	1
10	803 112 003	Locknut	4	31	401 181 074	Capscrew	1
	802 312 000	Flatwasher	4	32	219 901 001	Zerk	2
11	201 210 022	Clamp	2	33	401 181 005	Block, Clevis	1
12	201 270 001	Clamp	4	34	802 525 000	Lockwasher	1
13	803 112 003	Locknut	4	35	802 825 003	Nut	1
14	401 210 026	Mounting Bracket, Gearbox - LH	1	36	401 181 002	Clevis	1
NS	401 210 027	Mounting Bracket, Gearbox - RH	1	37	401 210 001	Dolly	1
15	801 116 175	Capscrew	4	38	212 905 101	Plug, Drain	1
	802 516 000	Lockwasher	4	39	223 210 033	Tank, Hydraulic	1
	802 816 003	Hexnut	4	40	201 301 050	Gasket, Filler Neck	1
16	803 027 004	Nut, Slotted	1	41	401 181 006	Flatwasher, Outer	1
17	801 112 145	Capscrew	8	NS	802 327 000	Flatwasher, Inner	1
	802 512 000	Lockwasher	8	42	406 184 003	Adapter, Hub	2
				*	401 161 025	Grease Seal Assembly (Incl. Items 28 and 29)	



SCRAPER YOKE

1003



HANCOCK DIVISION



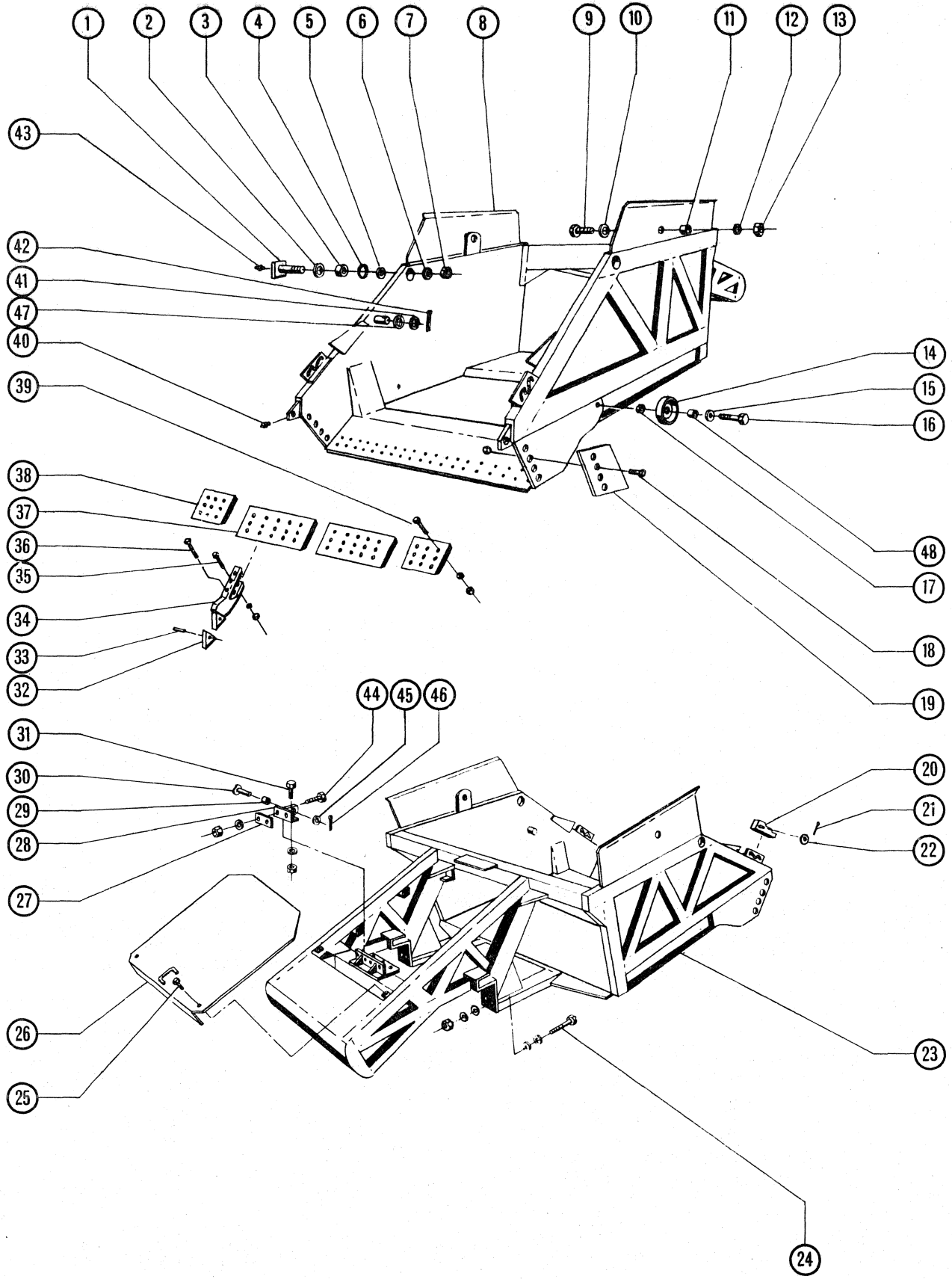
Page 7

SCRAPER YOKE

	Old Number	New Number
1	101-210-019	1552994
2	201-270-001	1557908
3	803-112-003	17D-3
4	201-210-038	1557821
5	201-270-001	1557908
6	201-210-038	1557821
7	803-112-003	17D-3
8	820-900-127	65D-24
9	102-198-104	1554856
9A	102-198-105	1554857
10	102-198-074	1554833
11	219-901-001	1550756
12	803-410-180	1F-832
13	802-419-000	619028
14	replaced by 909-010-001	665199
15	209-040-018	1567404
16	801-116-207	17C-1040
	802-516-000	4E-10
17	401-210-017	1559514
18	401-210-019	1559516
19	219-902-002	1571214

10/10/10
10/10/10
10/10/10

REF.	PART NUMBER	DESCRIPTION	QTY.
		<u>SCRAPER YOKE</u>	
1	101 210 019	Yoke, Scraper	1
2	201 270 001	Clamp	2
3	803 112 003	Locknut	7
4	201 210 038	Clamp	1
5	201 270 001	Clamp	6
6	201 210 038	Clamp	4
7	803 112 003	Locknut	4
8	820 900 127	Locknut	2
9	102 198 104	Shim	AR
NS	102 198 105	Shim	AR
10	102 198 074	Pin, Yoke	2
11	219 901 001	Zerk	2
12	803 410 180	Pin, Cotter	2
13	802 419 000	Flatwasher	2
14	102 162 002	Bushing	2
15	209 040 018	Pin, Cylinder	2
16	801 116 207	Capscrew	12
	802 516 000	Lockwasher	12
17	401 210 017	Ring, Lock - 2 Pieces	1
18	401 210 019	Shim - 2 Pieces	1
19	219 902 002	Zerk	1



MAIN FRAME

1004



HANCOCK DIVISION



Page 9

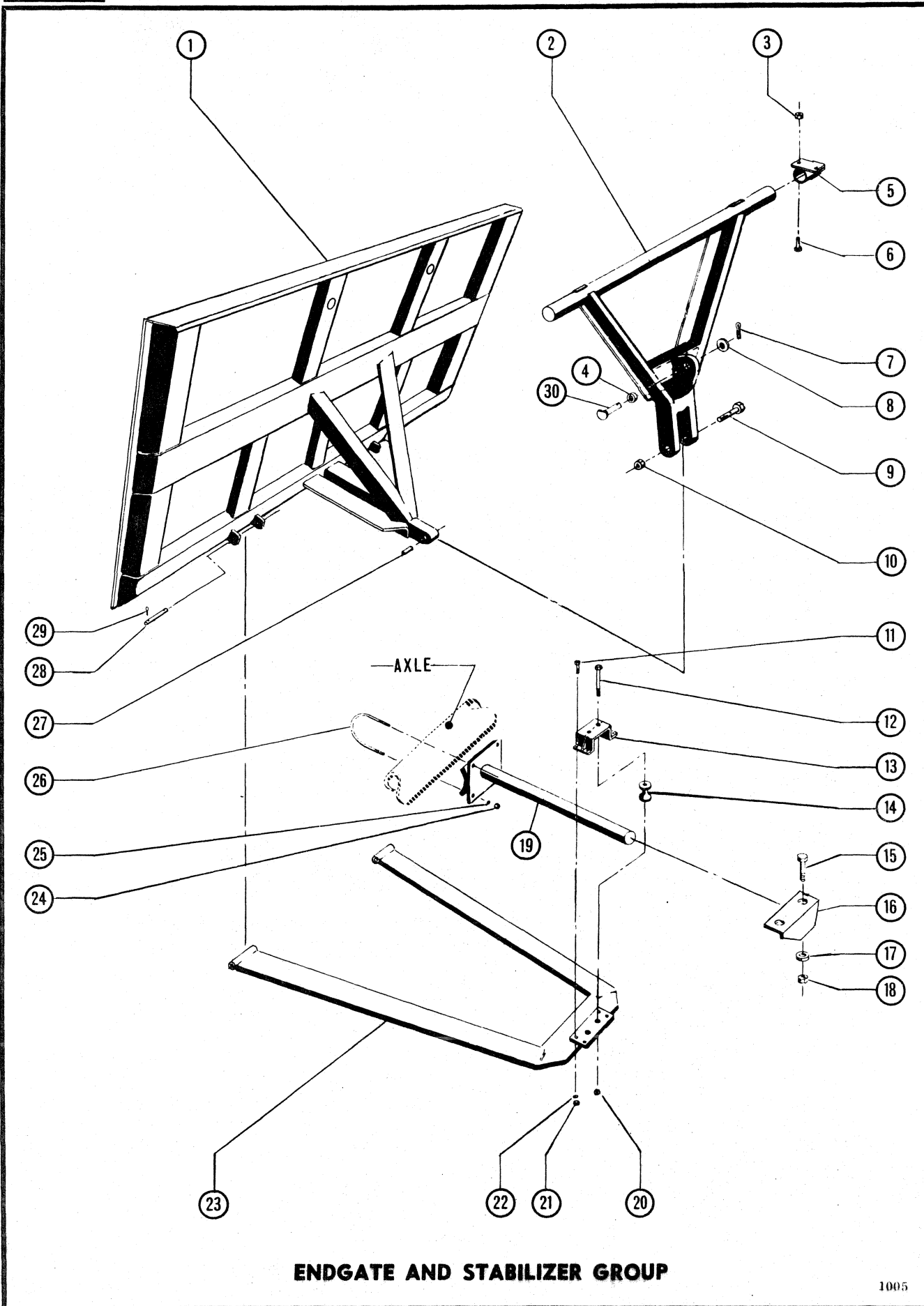
SCRAPER MAIN FRAME

	Old Number	New Number		Old Number	New Number
1	102-198-074	1554833	28	102-166-064	1553880
2	102-198-104	1554856	29	102-160-012	1553489
2A	102-198-105	1554857	30	replaced by 209-040-018	1567404
3	909-202-001	1300558	31	801-117-205	1C-1240
4	102-198-064	1554828		802-517-000	4E-12
5	102-198-072	1554831		802-817-005	61D-12
6	102-198-073	1554832	32	102-900-025*	1550031
7	803-123-003	65D-24	33	102-900-026*	1550588
8	102-198-110	1552026	34	102-900-024	1550030
9	801-117-245	1C-1256	35	801-517-285	1552075
10	802-317-000	619036		802-517-000	4E-12
11	102-198-010	1554797		802-817-005	61D-12
11A	102-198-011	1554798	36	801-517-265	1552074
12	802-317-000	619036		802-517-000	4E-12
13	803-117-005	17D-10		802-817-005	61D-12
14	replaced by 990-100-059	1562333	37	102-900-001	1550008
15	802-319-000	619037	38	102-900-002	1550009
16	801-119-315	15C-1688	39	801-517-215	1552070
17	803-119-005	17D-12		802-517-000	4E-12
18	replaced by 801-116-185	1C-1032		802-817-005	61D-12
	803-116-005	17D-9	40	219-901-002	10H-25
19	102-198-021	1554804	41	802-428-000	1313624
20	501-198-007	1560945	42	803-414-220	1F-1648
NS	501-198-006	1560944	43	219-901-001	1550756
21	803-407-200	654722	44	801-117-285	1C-1272
22	802-317-000	619036		802-517-000	4E-12
23	102-198-099	1554854		802-817-003	61D-12
24	replaced by 801-117-145	1C-1256	45	802-314-000	703871
	802-317-000	619036	46	803-409-180	1F-632
	803-117-003	17D-10	47	501-198-108	1561002
25	replaced by 820-900-237	1550938	48	103-160-054	1555779
26	102-198-053	1554821	49	Add 209-040-021	1562797
27	102-166-067	1553883	50	Add 909-010-001	665199
	102-166-068	1553884	51	Add 803-410-180	1F-832
	102-166-069	1553885	52	Add 802-419-000	619028
	102-166-070	1553886	*	102-900-023	1550030
	102-166-071	1553887			

Chisel Assembly includes items 32, 33, 34.



REF.	PART NUMBER	DESCRIPTION	QTY.	REF.	PART NUMBER	DESCRIPTION	QTY.
<u>SCRAPER MAIN FRAME</u>							
1	102 198 074	Pin, Yoke	2		102 166 069	Shim - 3/8"	AR
2	102 198 104	Shim	AR		102 166 070	Shim - 1/4"	AR
NS	102 198 105	Shim	AR		102 166 071	Shim - 1/8"	AR
3	909 020 001	Bushing	2	28	102 166 064	Hanger, Cylinder	2
4	102 198 064	Seal	4	29	102 160 012	Bushing	2
5	102 198 072	Spacer	4	30	209 040 021	Pin, Cylinder	2
6	102 198 073	Washer	2	31	801 117 205	Capscrew	4
7	803 123 003	Locknut	2		802 517 000	Lockwasher	4
8	102 198 110	Main Frame	1		802 817 005	Hexnut	4
9	801 117 245	Capscrew	2	32	102 900 025	Point, Chisel*	4
10	802 317 000	Flatwasher	2	33	102 900 026	Pin, Chisel*	4
11	102 198 010	Bushing	2	34	102 900 024	Shank, Chisel*	4
NS	102 198 011	Bushing	2	35	801 517 285	Plowbolt	8
12	802 317 000	Flatwasher	2		802 517 000	Lockwasher	8
13	803 117 005	Locknut	2		802 817 005	Hexnut	8
14	103 160 055	Roller, Stop	2	36	801 517 265	Plowbolt	4
15	802 319 000	Flatwasher	2		802 517 000	Lockwasher	4
16	801 119 315	Capscrew	2		802 817 005	Hexnut	4
17	803 119 005	Locknut	2	37	102 900 001	Blade	2
18	801 116 175	Capscrew	8	38	102 900 002	Blade	2
	803 116 005	Locknut	8	39	801 517 215	Plowbolt	22
19	102 198 021	Cutter, Side	2		802 517 000	Lockwasher	22
20	501 198 007	Block, Adjustment - RH	1		802 817 005	Hexnut	22
NS	501 198 006	Block, Adjustment - LH	1	40	219 901 002	Zerk	2
21	803 407 200	Pin, Cotter	2	41	802 428 000	Flatwasher	2
22	802 317 000	Flatwasher	2	42	803 414 220	Pin, Cotter	2
23	102 198 099	Track, Replaceable	2	43	219 901 001	Zerk	2
24	801 117 265	Capscrew	4	44	801 117 285	Capscrew	4
	802 317 000	Flatwasher	16		802 517 000	Lockwasher	4
	803 117 003	Locknut	4		802 817 003	Hexnut	4
25	804 511 125	Hex Washer Head Capscrew	2	45	802 314 000	Flatwasher	2
26	102 198 053	Cover, Tail Frame	1	46	803 409 180	Pin, Cotter	2
27	102 166 067	Shim - 1"	AR	47	501 198 108	Bushing	2
	102 166 068	Shim - 1/2"	AR	48	103 160 054	Bushing	2
					*102 900 023	Chisel Assembly (Incl. Items 32, 33, 34)	



ENDGATE AND STABILIZER GROUP

1005



HANCOCK DIVISION



Page 11

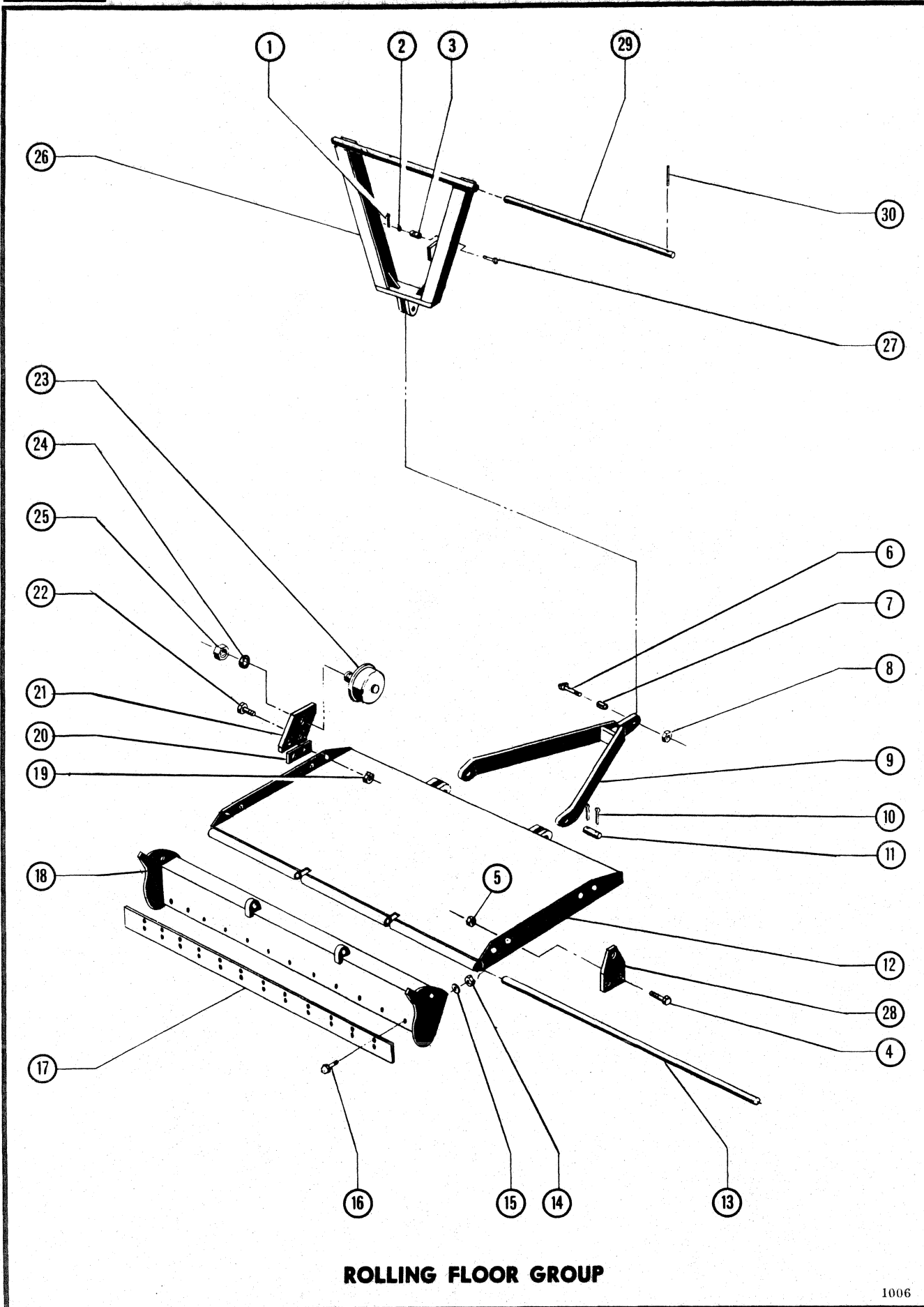
ENDGATE AND STABILIZER GROUP

	Old Number	New Number
1	103-198-026	1556413
2	103-161-044	1555872
3	803-117-003	17D-10
4	909-010-001	665199
5	102-161-092	1553690
6	801-117-185	1C-1232
7	803-410-180	1F-832
8	802-319-000	619037
9	103-161-055	1555882
10	803-122-004	18D-22
11	801-112-155	1C-620
12	801-117-345	15C-12112
13	103-160-063	1555784
14	103-160-064	1555785
15	replaced by 801-117-195	1C-1236
16	103-161-076	1555899
17	802-317-000	619036
18	803-117-003	17D-10
19	103-161-069	1555893
20	803-117-003	17D-10
21	802-812-003	61D-6
22	802-512-000	4E-6
23	103-161-063	1552023
24	802-814-003	61D-8
25	802-514-000	4E-8
26	103-161-080	1555901
27	103-161-022	1555857
28	820-900-602	1550951
29	803-410-200	1F-840
30	209-040-021	1562797



The page contains extremely faint and illegible text, likely bleed-through from the reverse side of the document. The text is scattered across the page and is not readable.

REF.	PART NUMBER	DESCRIPTION	QTY.
<u>ENDGATE AND STABILIZER GROUP</u>			
1	103 198 026	Endgate	1
2	103 161 044	Actuator, Endgate	1
3	803 117 003	Locknut	4
4	909 010 001	Bushing, Actuator	1
5	102 161 092	Bearing, Actuator	2
6	801 117 185	Capscrew	4
7	803 410 180	Pin, Cotter	1
8	802 319 000	Flatwasher	1
9	103 161 055	Pin	1
10	803 122 004	Locknut	1
11	801 112 155	Capscrew	4
12	801 117 345	Capscrew	2
13	103 160 063	Bracket, Roller	1
14	103 160 064	Roller, Track	2
15	801 117 205	Capscrew	2
16	103 161 076	Hanger, Track	1
17	802 317 000	Flatwasher	4
18	803 117 003	Locknut	2
19	103 161 069	Track, Roller	1
20	803 117 003	Locknut	2
21	802 812 003	Hexnut	4
22	802 512 000	Lockwasher	4
23	103 161 063	Yoke, Stabilizer	1
24	802 814 003	Hexnut	4
25	802 514 000	Lockwasher	4
26	103 161 080	U-Bolt	2
27	103 161 022	Bushing	1
28	820 900 602	Pin	2
29	803 410 200	Pin, Cotter	4
30	209 040 021	Pin	1



ROLLING FLOOR GROUP

1006



HANCOCK DIVISION

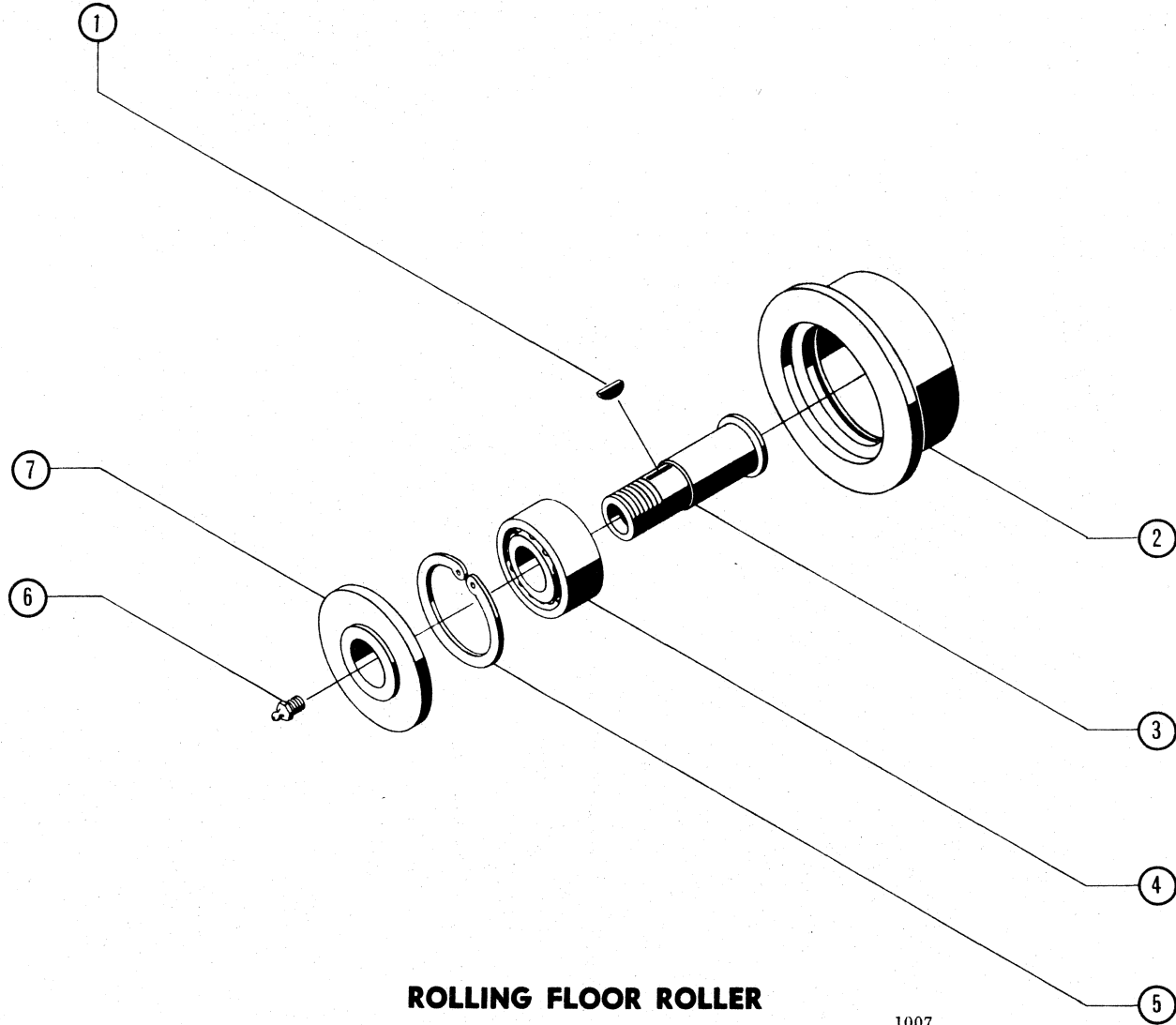


Page 13

ROLLING FLOOR GROUP

	Old Number	New Number
1	803-410-180	1F-840
2	802-319-000	619037
3	909-010-001	665199
4	801-117-205	1C-1240
5	803-117-003	17D-10
6	103-161-055	1555882
7	103-161-022	1555857
8	803-122-004	18D-22
9	103-161-018	1555854
10	803-410-200	1F-440
11	820-900-601	1550948
12	103-160-001	1555750
13	103-160-052	1555778
14	802-814-003	61D-8
15	802-514-000	4E-8
16	801-114-175	1C-828
17	103-161-061	1555886
18	103-160-043	1555771
19	803-117-003	17D-10
20	103-160-014	1555762
21	103-198-014	1556405
22	replaced by 801-117-225	1C-1248
23	103-198-012	1556403
NS	103-198-001	1556393
24	802-520-000	4E-18
25	803-220-004	8D-18
26	103-161-002	1555844
27	209-040-021	1562797
28	103-198-009	1556400
29	103-160-019	1555766
30	803-314-200	730131

REF.	PART NUMBER	DESCRIPTION	QTY.
<u>ROLLING FLOOR GROUP</u>			
1	803 410 180	Pin, Cotter	1
2	802 319 000	Flatwasher	1
3	909 010 001	Bushing	1
4	801 117 205	Capscrew	4
5	803 117 003	Locknut	4
6	103 161 055	Pin	1
7	103 161 022	Bushing	1
8	803 122 004	Locknut	1
9	103 161 018	Yoke, Connecting	1
10	803 410 200	Pin, Cotter	4
11	820 900 601	Pin	2
12	103 160 001	Floor, Rolling	1
13	103 160 052	Rod, Hinge	1
14	802 814 003	Hexnut	12
15	802 514 000	Lockwasher	12
16	801 114 175	Capscrew	12
17	103 161 061	Blade, Strike Off	1
18	103 160 043	Frame, Strike Off Blade	1
19	803 117 003	Locknut	4
20	103 160 014	Shim	AR
21	103 198 014	Hanger, Rear Roller	2
22	801 117 205	Capscrew	4
23	103 198 012	Roller, Floor See Index	4
NS	103 198 001	Roller, Floor See Index	4
24	802 520 000	Lockwasher	4
25	803 220 004	Jamnut	4
26	103 161 002	Actuator, Floor	1
27	209 040 021	Pin	1
28	103 198 009	Hanger, Front Roller	2
29	103 160 019	Rod, Actuator	1
30	803 314 200	Pin, Roll	1



ROLLING FLOOR ROLLER

1007

REF.	PART NUMBER	DESCRIPTION	QTY.	REF.	PART NUMBER	DESCRIPTION	QTY.
	103 198 012	Rolling Floor Roller	4	4	901 011 801	Bearing	1
1	923 010 002	Key, Woodruff	1	5	911 024 401	Ring, Retainer	1
2	103 198 011	Roller	1	6	219 901 001	Zerk	1
3	103 198 003	Axle	1	7	103 198 010	Spacer	1

ALWAYS STATE MODEL AND SERIAL NUMBER, WHEN ORDERING PARTS



HANCOCK DIVISION



Page 14

ROLLING FLOOR ROLLER

	Old Number	New Number
A	103-198-012	1556403
1	923-010-002	5J-606
2	103-198-011	1556402
3	103-198-003	1556395
4	901-011-801	1550985
5	911-024-401	711406
6	219-901-001	1550756
7	103-198-010	1556401



HANCOCK DIVISION



Page 15

STUB SPINDLE

	Old Number	New Number
A	501-198-058	1560958
1	501-198-057	1560957
2	801-113-125	1C-712
3	801-310-115	11G-410
4	501-176-015	1560418
5	501-176-016	1560419
6 replaced by	917-027-504	1550990
7	903-022-501	742242
8	902-041-201	742240
9	501-198-059	1560959
10	820-900-801	1550754
11	820-900-105	1566120
12	803-410-220	1F-848
13	501-148-001	1560005
14	501-176-020	1560423
15	219-901-001	1550756
16	802-513-000	4E-7

1000

1000

1000

1000

1000

1000

1000

1000

1000

1000

1000

1000

1000

1000

1000

1000

1000

1000

1000

1000

1000

1000

1000

1000

1000

1000

1000

1000

1000

1000

1000

1000

1000

1000

1000

1000

1000

1000

1000

1000

1000

1000

1000

1000

1000

1000

1000

1000

1000

1000

1000

1000

1000

1000

1000

1000

1000

1000

1000

1000

1000

1000

1000

1000

1000

1000

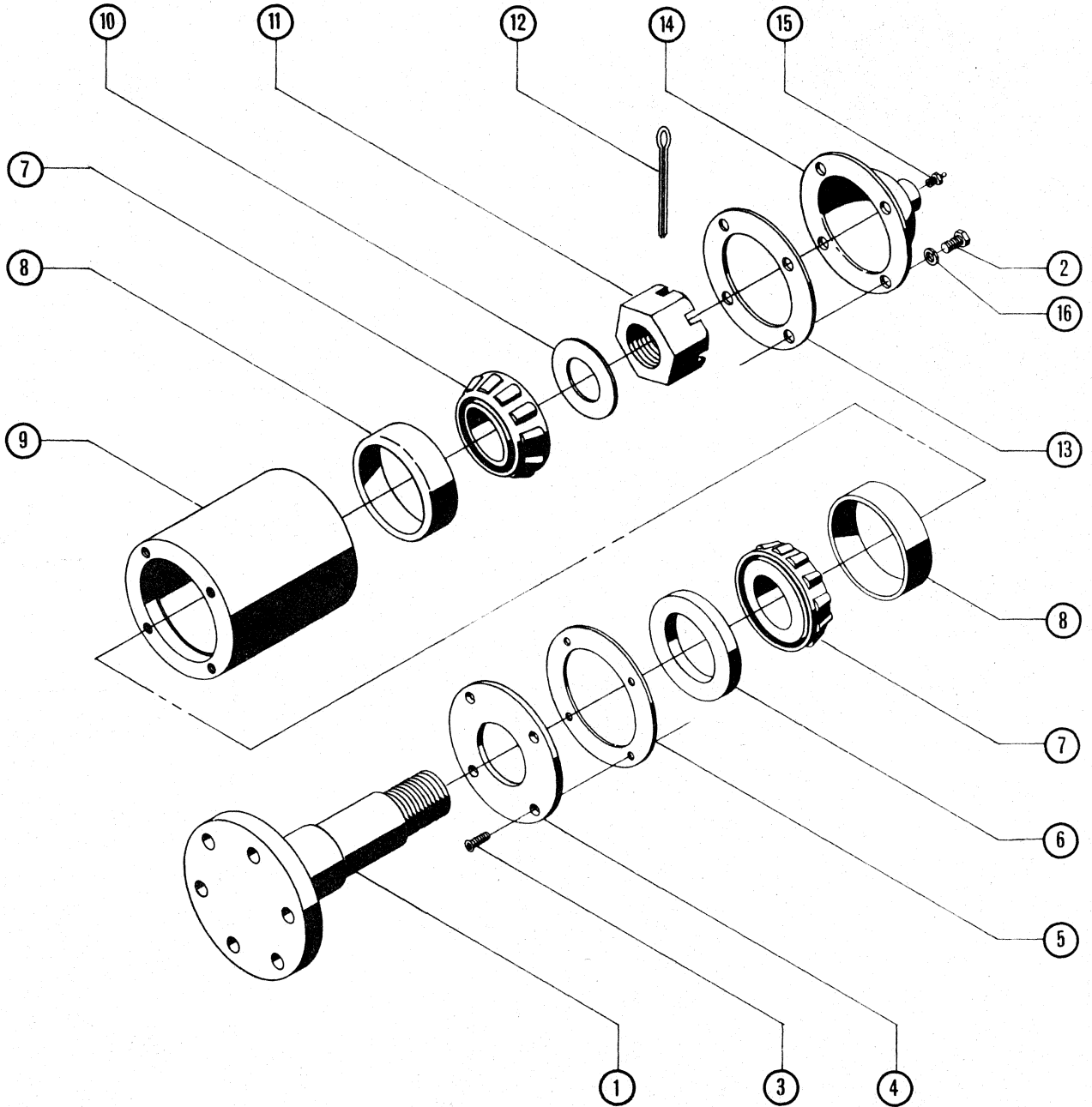
1000

1000

1000

1000

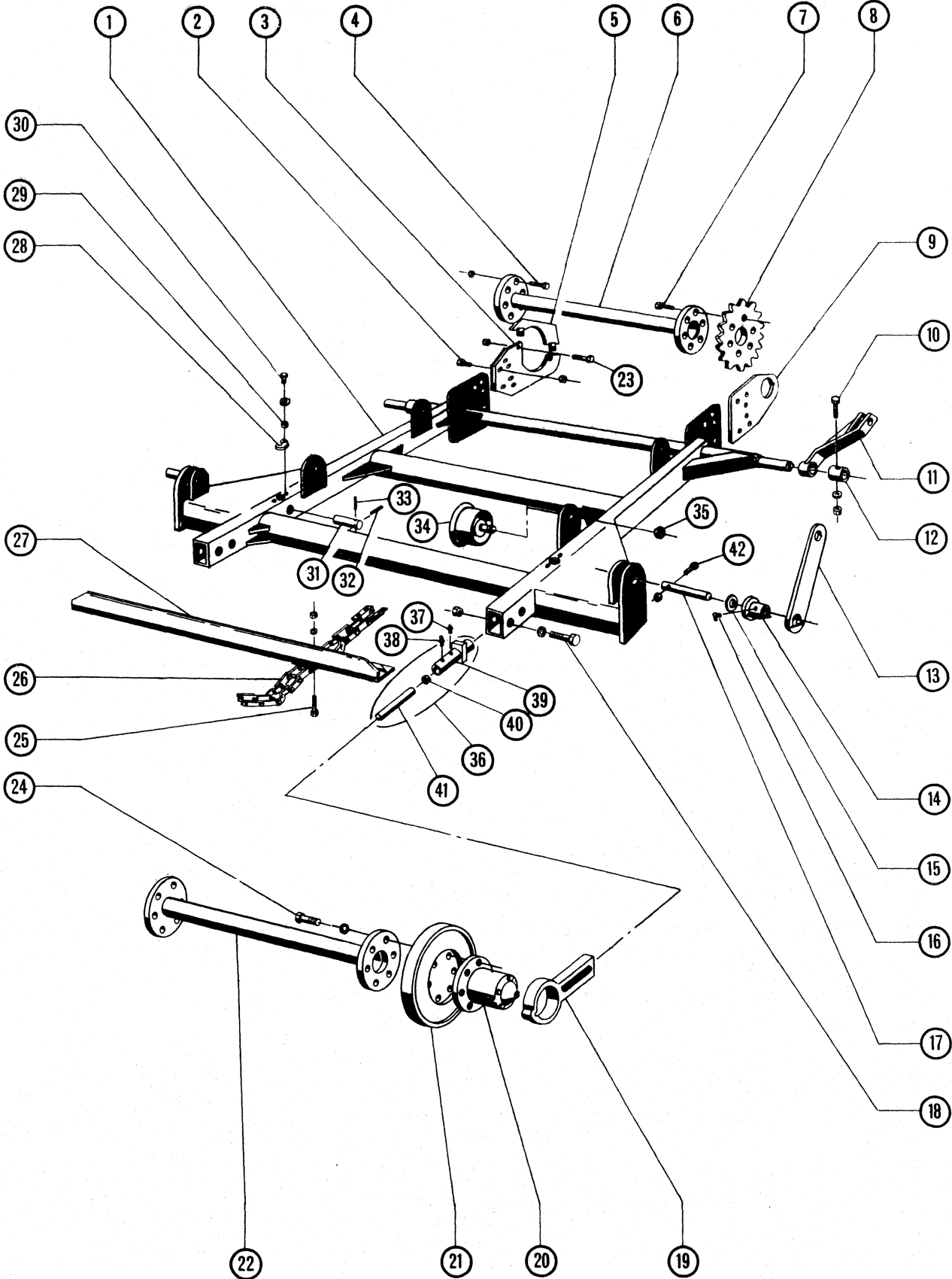
1000



STUB SPINDLE

1008

REF.	PART NUMBER	DESCRIPTION	QTY.	REF.	PART NUMBER	DESCRIPTION	QTY.
	501 198 058	STUB SPINDLE ASSEMBLY	3	9	501 198 059	Hub	1
1	501 198 057	Stub Spindle	1	10	820 900 801	Washer	1
2	801 113 125	Capscrew	4	11	820 900 105	Slotted Nut	1
3	801 310 115	Flat Head Screw	4	12	803 410 220	Cotter Pin	1
4	501 176 015	Cover	1	13	501 148 001	Gasket	1
5	501 176 016	Gasket	1	14	501 176 020	Cap	1
6	917 048 501	Seal	1	15	219 901 001	Zerk	1
7	903 022 501	Cone	2	16	802 513 000	Lockwasher	4
8	902 041 201	Cup	2				



ELEVATOR

1009

ALWAYS STATE MODEL AND SERIAL NUMBER, WHEN ORDERING PARTS



HANCOCK DIVISION



Page 17

ELEVATOR

	Old Number	New Number		Old Number	New Number
A	501-210-001	1552012		803-117-003	17D-10
1	501-198-062	1560962	24	801-116-195	1C-1036
2	801-117-235	1C-1252		802-516-000	4E-10
	Deleted		25	801-114-161	23C-828
3	501-184-002	1560660		802-514-000	4E-8
4	801-116-197	17C-836		802-814-001	61D-08
	802-516-000	4E-10	26	501-900-092	1551947
5	501-184-007	1560665	27	-----	1562437
6	501-198-045	1560949	28	501-198-100	1560994
7	801-116-195	1C-1036	29	501-198-101	1560995
	802-516-000	4E-10	30	801-112-125	1C-612
8	501-198-002	1560940		802-512-000	4E-6
9	501-198-106	1561000	31	501-198-080	1560977
10	801-112-245	1C-656	32	803-312-220	731714
	802-312-000	619024	33	803-312-160	668312
	803-112-003	17D-3	34	501-166-057	1560314
11	501-198-055	1560955	35	803-121-004	18D-20
12	501-166-050	1560307	36	501-198-129	1561017
13	501-198-107	1561001	37	501-198-097	1560991
14	501-161-104	1562382	38	219-901-001	1550756
15	501-166-039	1560298	39	501-198-128	1561016
16	219-902-001	12H-25	40	920-821-401	1550994
17	501-166-031	1560290	40A	919-221-401	25K-40100
18	801-117-287	12C-1272	41	501-198-131	1561019
	501-193-079	1562676	42	801-116-265	1C-1064
	803-117-007	17D-10		803-116-003	17D-9
19	501-198-061	1560961	43 Add	-----	1572103
20	501-198-058	1560958			
21	501-198-086	1560982			
22	501-198-045	1560949			
23	801-117-185	1C-1232			

2020-2021
10/15/2020
10/15/2020

10/15/2020

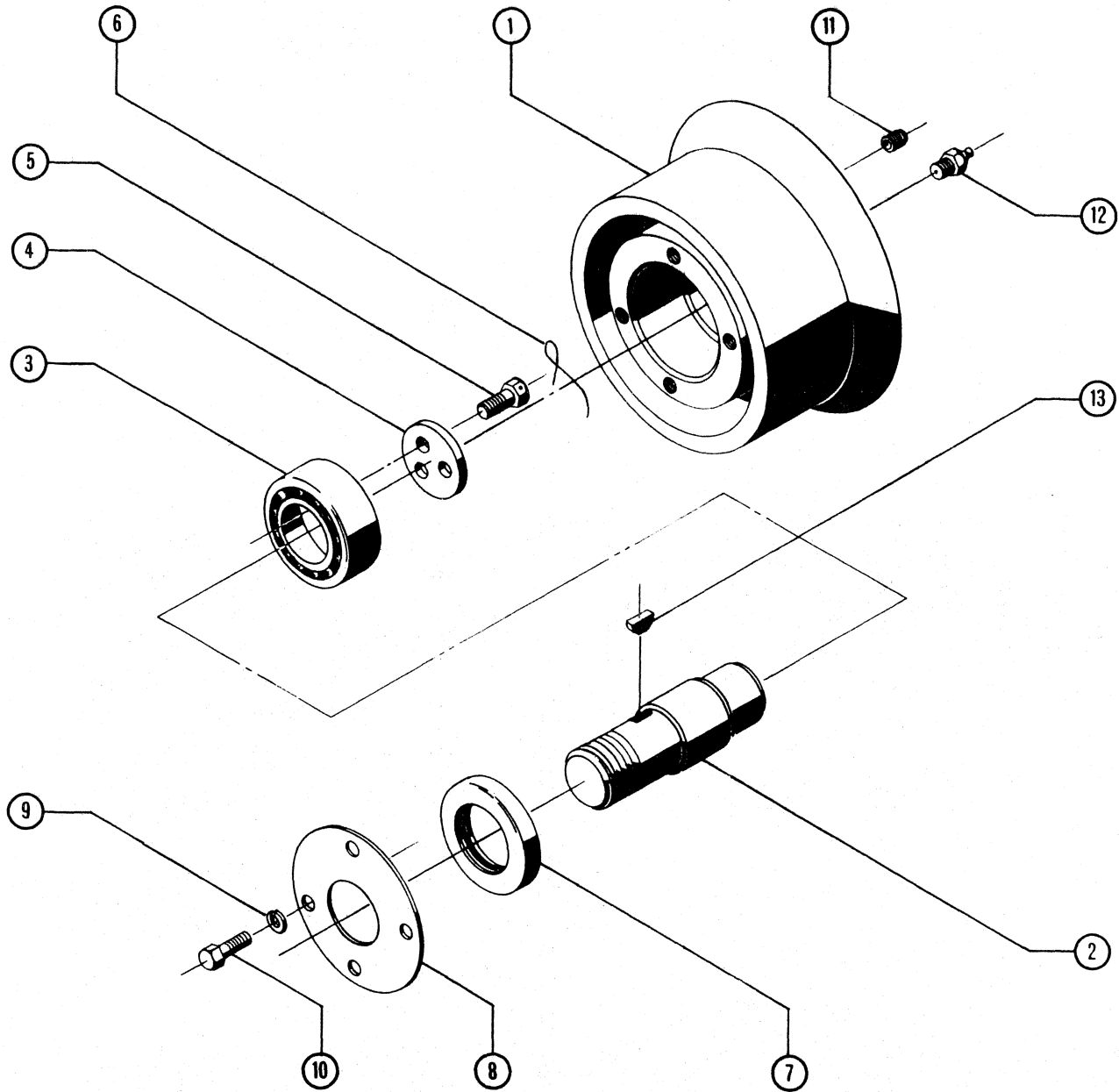
10/15/2020

10/15/2020

2020-2021
10/15/2020
10/15/2020

REF.	PART NUMBER	DESCRIPTION	QTY.	REF.	PART NUMBER	DESCRIPTION	QTY.
<u>ELEVATOR</u>							
	501 210 001	Elevator Assembly *	1	23	801 117 185	Capscrew	2
1	501 198 062	Frame, Elevator	1		803 117 003	Locknut	2
2	801 117 235	Capscrew	6	24	801 116 195	Capscrew	12
	803 117 005	Jam Nut	6		802 516 000	Lockwasher	12
3	501 184 002	Hanger, Elevator Gearbox	1	25	801 114 161	Capscrew	120
4	801 116 197	Capscrew	12		802 514 000	Lockwasher	120
	802 516 000	Lockwasher	12		802 814 001	Hexnut	120
5	501 184 007	Retainer, Elevator Gearbox	1	26	501 900 092	Chain Set - See Index	1
6	501 198 045	Head Roller	1	27	501 184 024	Drag	15
7	801 116 195	Capscrew	6	28	501 198 100	Cover, Chain Adjustment	2
	802 516 000	Lockwasher	6	29	501 198 101	Spacer, Cover	2
8	501 198 002	Sprocket - 16T	2	30	801 112 125	Capscrew	4
9	501 198 106	Hanger, Head Roller	1		802 512 000	Lockwasher	4
10	801 112 245	Capscrew	1	31	501 198 080	Pin, Lock	2
	802 312 000	Flatwasher	1	32	803 312 220	Roll Pin	2
	803 112 003	Locknut	1	33	803 312 160	Roll Pin	2
11	501 198 055	Arm, Upper Elevator	2	34	501 166 057	Idler Roller - See Index	4
12	501 166 050	Retainer, Elevator Arm	2	35	803 121 004	Locknut	4
13	501 198 107	Arm, Lower	2	36	501 198 129	Adjuster Assembly (Includes Items 37 Thru 41)	2
14	501 161 104	Bushing, Flat	2	37	501 198 097	Valve, Relief	2
15	501 166 039	Spacer	2	38	219 901 001	Zerk	2
16	219 902 001	Zerk - 90°	2	39	501 198 128	Tube, Valve	2
17	501 166 031	Rod, Hanger	2	40	920 821 401	Ring, Back Up	2
18	801 117 287	Capscrew	4	NS	919 221 401	"O" Ring	2
	501 198 079	Washer	4	41	501 198 131	Ram, Valve	2
	803 117 007	Locknut	4	42	801 116 265	Capscrew	2
19	501 198 061	Hanger, Tail Roller	2		803 116 003	Locknut	2
20	501 198 058	Stub Spindle - See Index	3				
21	501 198 086	Roller, Chain	2				
22	501 198 045	Tail Roller	1				

*Assembly Includes Items Shown Plus Hydraulic Motor and Elevator Gear-box.



IDLER ROLLER

1010

REF.	PART NUMBER	DESCRIPTION	QTY.	REF.	PART NUMBER	DESCRIPTION	QTY.
	501 166 057	IDLER ROLLER ASSEMBLY	4	7	917 015 001	Seal	1
1	501 166 058	Roller	1	8	501 166 060	Seal Cover	1
2	501 166 059	Roller Shaft	1	9	802 510 000	Lockwasher	4
3	901 011 809	Ball Bearing	1	10	801 110 125	Capscrew	4
4	501 166 061	Bearing Retainer	1	11	212 912 501	Headless Pipe Plug	2
5	820 900 429	Drilled Head Capscrew	3	12	219 901 001	Zerk	1
6	925 000 106	Safety Wire	1	13	923 010 002	Woodruff Key	1



HANCOCK DIVISION



Page 18

IDLER ROLLER

	Old Number	New Number
A	501-166-057	1560314
1	501-166-058	1560315
2	501-166-059	1560316
3	901-011-809	710048
4	501-166-061	1560318
5	820-900-429	3C-412
6	925-000-106	28H-17060
7	917-015-001	1550556
8	501-166-060	1560317
9	802-510-000	4E-4
10	801-110-125	1C-412
11	212-912-501	15F-02
12	219-901-001	1550756
13	923-010-002	5J-606



HANCOCK DIVISION

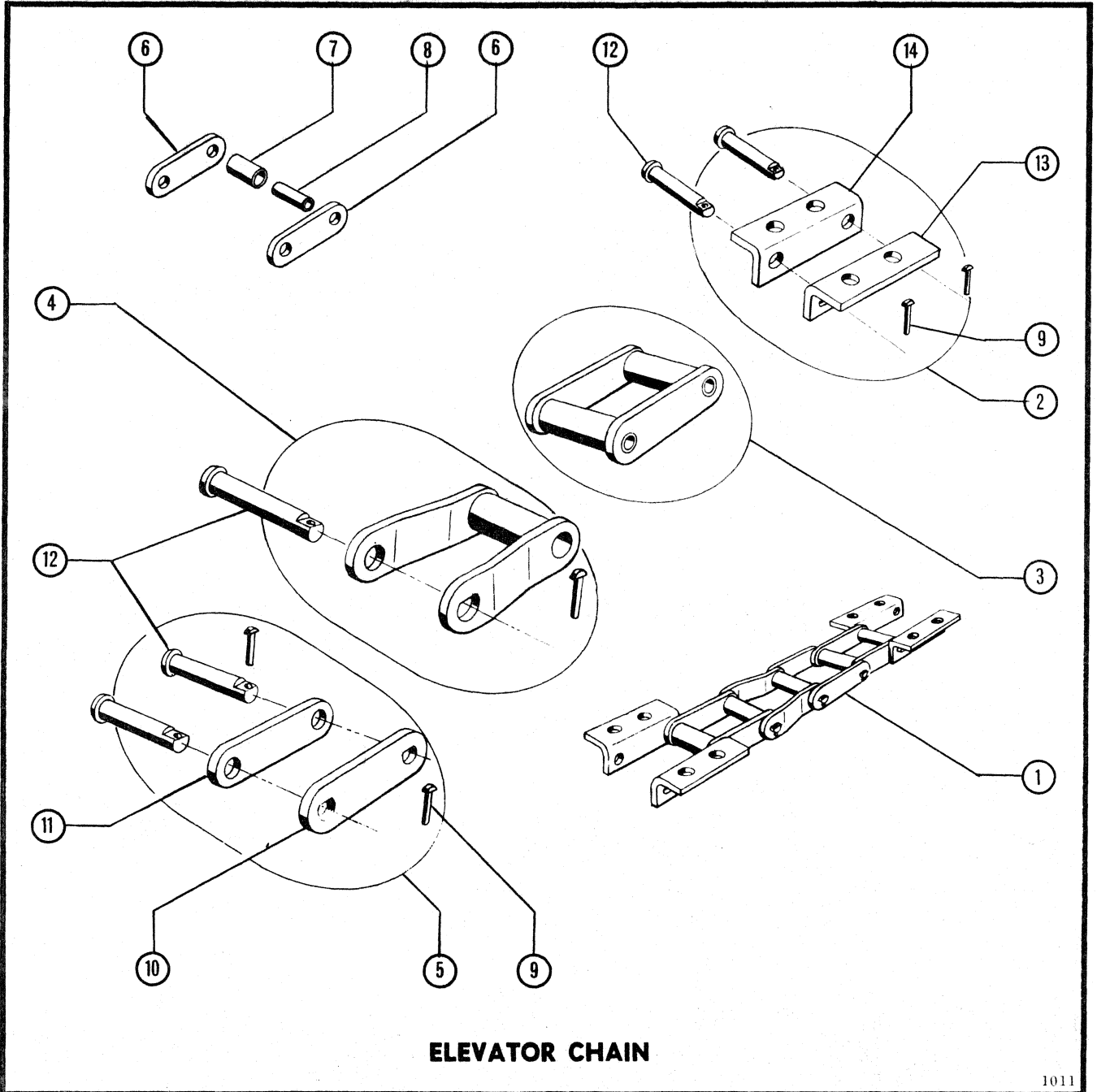


Page 19

ELEVATOR CHAIN

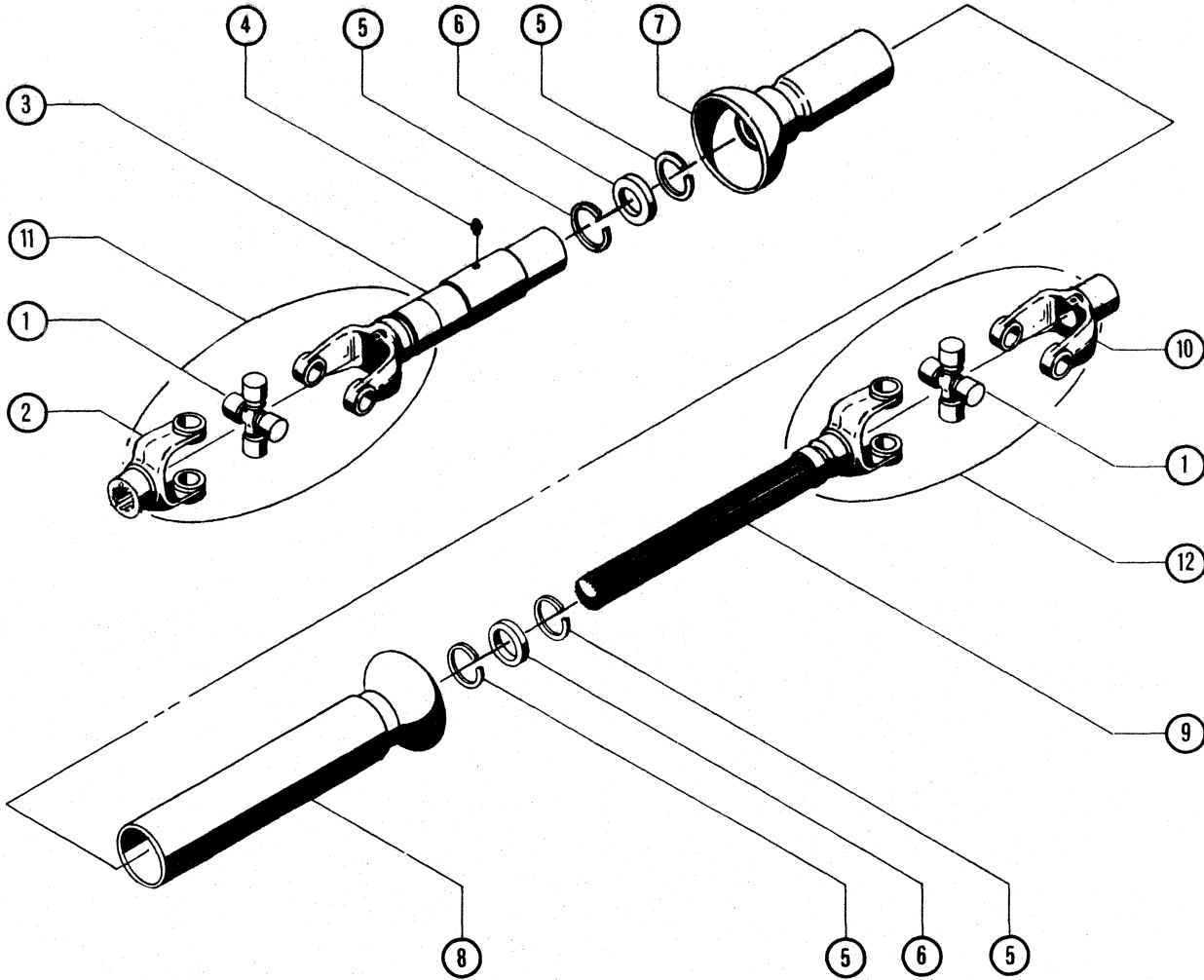
	Old Number	New Number
1	replaced by -----	1551947
NS	Deleted	
2	501-900-111	1569858
3	501-900-107	1569855
4	501-900-109	1566478
5	501-900-108	1569856
6	501-900-101	1551952
7	501-900-098	1566480
8	501-900-009	1551923
9	501-900-096**	1566481
10	501-900-100	1551951
11	501-900-099	1551950
12	501-900-095**	1566479
13	501-900-103	1551954
14	501-900-102	1551953
**	501-900-110	1569857

Pin and Key Set includes one each, items 9 and 12.



1011

REF.	PART NUMBER	DESCRIPTION	QTY.	REF.	PART NUMBER	DESCRIPTION	QTY.
1	501 900 094	CHAIN ASSEMBLY (RH)*	1	11	501 900 099	Link Bar (Head Side)	15
NS	501 900 093	Chain Assembly (LH)*	1	12	501 900 095	Pin**	75
2	501 900 111	Attachment Link Assembly	15	13	501 900 103	Attachment Link (Key Side)	15
3	501 900 107	Block Link Assembly	30	14	501 900 102	Attachment Link (Head Side)	15
4	501 900 109	Master Link Assembly	15	*	501 900 092	Matched Set of Chains (RH and LH)	
5	501 900 108	Connecting Link Assembly	15	**	501 900 110	Pin and Key Set (Includes One Each, Items 9 and 12)	
6	501 900 101	Link Bar	60	NOTE: Quantities Shown Are For One Complete Chain Assembly			
7	501 900 098	Roller	75	NOTE: It is Strongly Recommended That Chains Be Installed In Pairs To Assure Equal Lengths.			
8	501 900 009	Bushing	75				
9	501 900 096	Key (Sold in Lots of 100 Only)**	75				
10	501 900 100	Link Bar (Key Side)	15				



DRIVE LINE

1012

REF.	PART NUMBER	DESCRIPTION	QTY.	REF.	PART NUMBER	DESCRIPTION	QTY.
	608 210 001	Drive Line Assembly*	1	11	608 210 003	U-Joint Assembly (Includes Items 1-2-3-4)	1
1	602 900 030	Repair Kit#	2	12	608 210 004	U-Joint Assembly (Includes Items 1-9-10)	1
2	602 900 043	Yoke*, 1 3/8 x 21s	1				
NS	602 900 042	Yoke**, 1 3/8 x 6s	1				
3	602 900 098	Shaft, Tubular W/Yoke	1				
4	219 901 005	Zerk	1	*		Used with 1000 RPM PTO	
5	925 000 513	Retainer Ring	4	**		Used with 540 RPM PTO	
6	910 022 502	Bearing, Nylon	2	#		Repair kit includes 1 cross, 1 zerk, 4 caps and 4 snap rings	
7	602 900 097	Shield, Outer	1				
8	602 900 099	Shield, Inner	1				
9	602 900 096	Shaft, Solid W/Yoke	1				
10	602 900 043	Yoke, 1 3/8 x 21s	1				



HANCOCK DIVISION



Page 20

DRIVE LINE

	Old Number	New Number
A	608-210-001	1562060
1	602-900-030	1566444
2	602-900-043	1565252
NS	602-900-042	1565251
3	602-900-098	1565284
4	219-901-005	10H-35
5	925-000-513	1550740
6	910-022-502	1550739
7	602-900-097	1565283
8	602-900-099	1565285
9	602-900-096	1565282
10	602-900-043	1565252
11	608-210-003	1562061
12	608-210-004	1562062

1941

1941

1941

1941

1941

1941

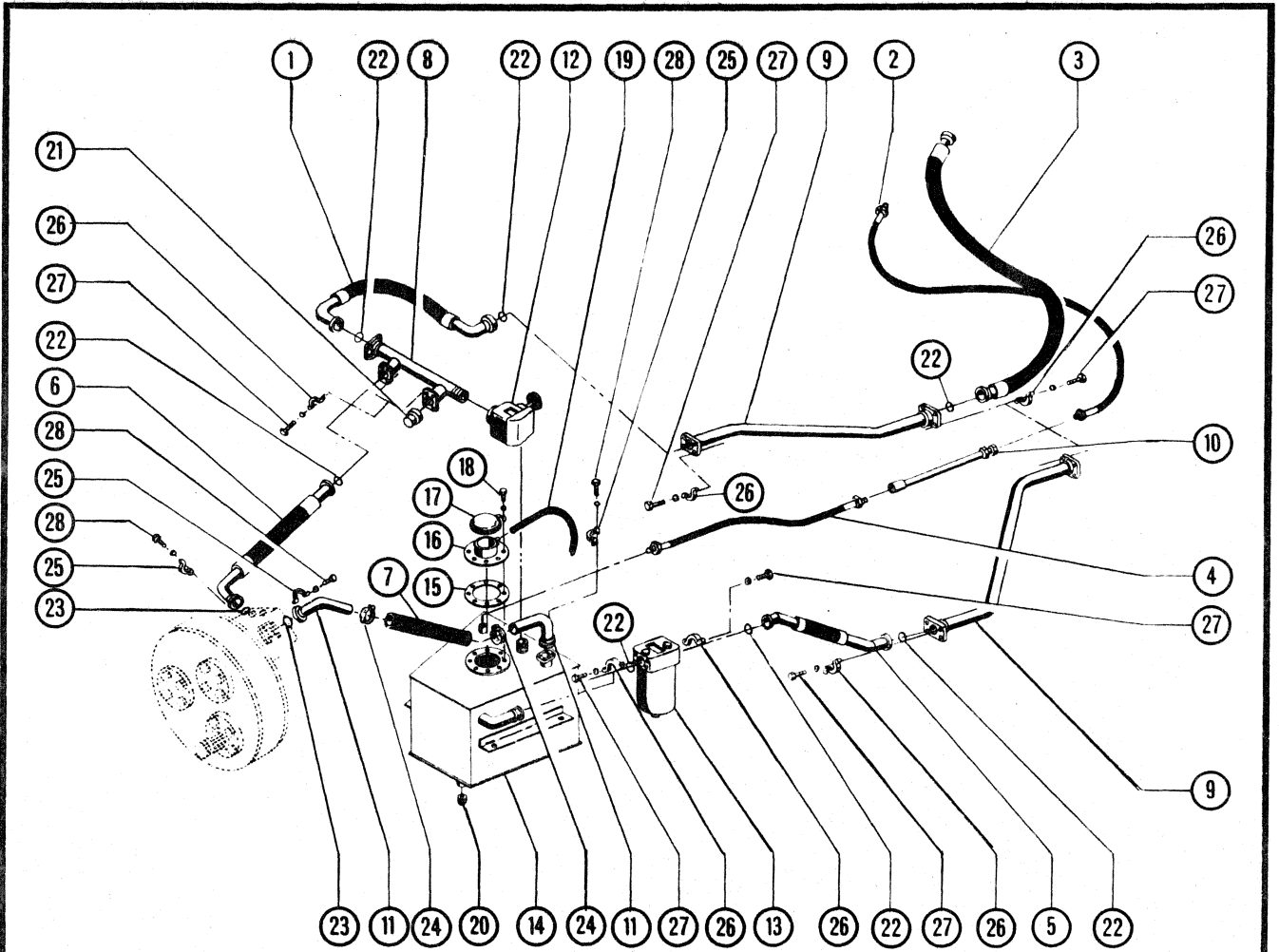


HANCOCK DIVISION



HYDRAULIC SYSTEM ELEVATOR

	Old Number	New Number			
1	208-920-021	1551515			207-930-024 887765
2	208-908-003	1564255			207-930-023 887766
3	208-920-022	1551518	14		223-210-033 1558565
4	208-908-017	1551404	15		201-301-050 1557962
5	208-920-019	1551513	16		223-315-069 1558672
6	208-920-024	1551518	17		----- 554843
7	201-210-005	1557788	18		801-112-125 2C-612
NS	201-210-073#	1557856			802-512-000 4E-6
8	201-210-008	1557791	19	replaced by	----- 1562459
9	201-210-017	1557800	20		212-905-101 565102
10	201-210-072	1551855	21		217-945-302 1551683
11	216-906-101#	799009	22		919-222-201 25K-40116
12	204-900-320	1550497	23		919-222-801 60K-40208
13	207-930-033	331549	24		922-010-001# 875248
	207-930-017	1551222	25		217-906-103 663096
	207-930-028	887769	26		217-906-301 663094
	207-039-027	887768	27		801-113-165 1C-724
	207-930-013	1550668			802-513-000 4E-7
	207-930-019	887764	28		801-114-165 1C-824
	207-930-020	887770			802-514-000 4E-8
	207-930-018	893446	29	Add	922-040-003 1566243



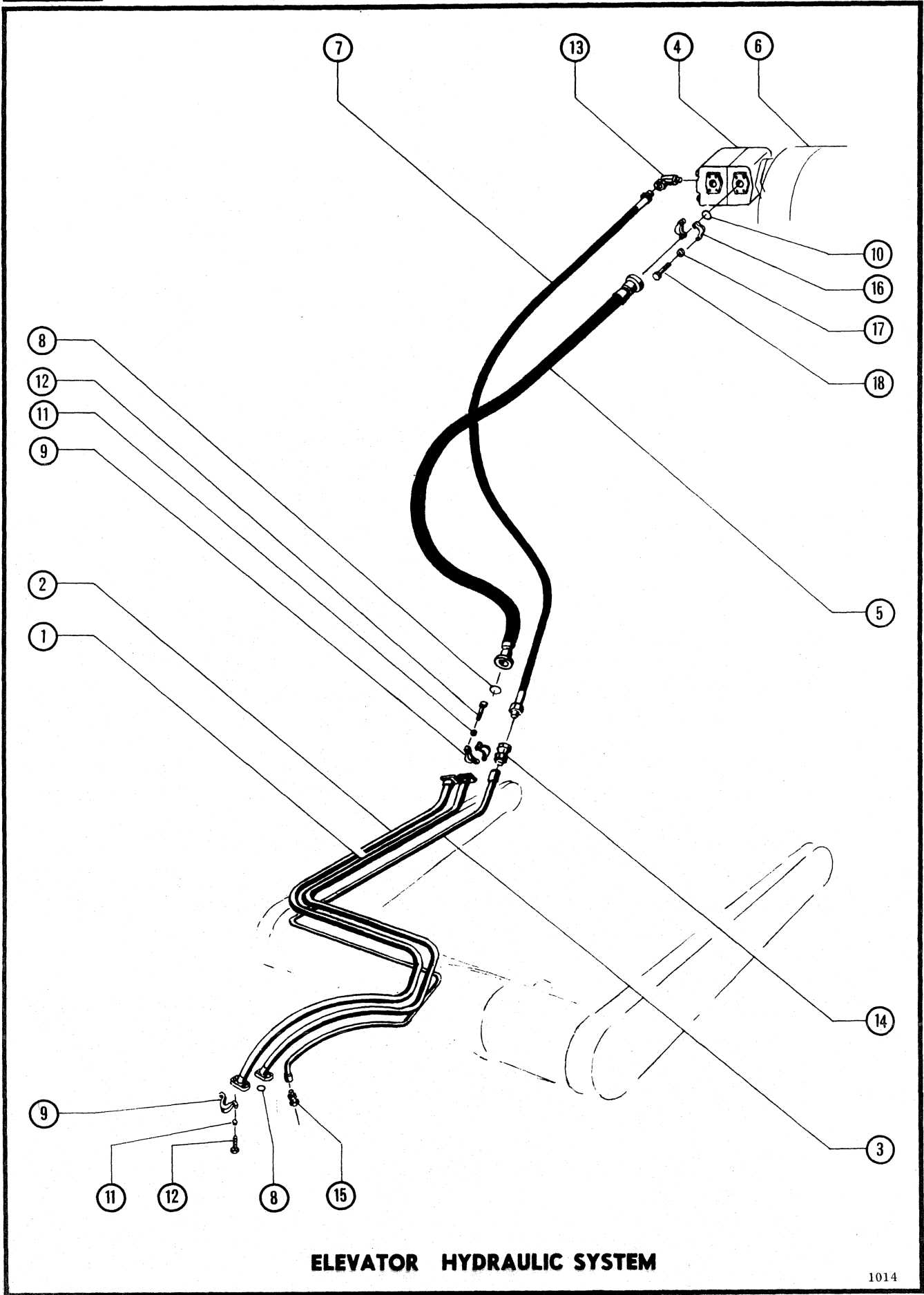
HYDRAULIC SYSTEM ELEVATOR

1013

REF.	PART NUMBER	DESCRIPTION	QTY.	REF.	PART NUMBER	DESCRIPTION	QTY.
1	208 920 021	Hose* - 1 1/4 x 15	1	17	000 554 843	Cap, Hydraulic Tank	1
2	208 908 003	Hose	1	18	801 112 125	Capscrew	8
3	208 920 022	Hose* - 1 1/4 x 62	2		802 512 000	Lockwasher	8
4	208 908 017	Hose - 1/2 x 19	1	19	208 906 093	Hose, Drain - 3/8 x 16	1
5	208 920 019	Hose* - 1 1/4 x 14	1	20	212 905 101	Plug, Drain	1
6	208 920 024	Hose* - 1 1/4 x 16	1	21	217 945 302	Plug, Flanged*	1
7	201 210 005	Hose# - 1 1/4 x 12	1	22	919 222 201	"O" Ring	10
NS	201 210 073	Insert, Hose#	1	23	919 222 801	"O" Ring	3
8	201 210 008	Manifold	1	24	922 010 001	Clamp#	4
9	201 210 017	Tube	2	25	217 906 103	Flange, Split (Pair)	3
10	201 210 072	Tube	1	26	217 906 301	Flange, Split (Pair)	10
11	216 906 101	Stem*#	2	27	801 113 165	Capscrew	40
12	204 900 320	Valve, Relief	1		802 513 000	Lockwasher	40
13	207 930 033	Filter Assembly	1	28	801 114 165	Capscrew	12
	207 930 017	Base	1		802 514 000	Lockwasher,	12
	207 930 028	Poppet, Valve - Base	1				
	207 930 027	Spring, Valve - Base	1				
	207 930 013	Washer, Spring - Base	1				
	207 930 019	Cartridge, Replacement	1				
	207 930 020	Gasket Kit (Incl. Copper Washer & "O" Ring)	1				
	207 930 018	Body	1				
	207 930 024	Spring, Body	1				
	207 930 023	Bolt	1				
14	223 210 033	Tank, Hydraulic	1				
15	201 301 050	Gasket, Filler Neck	1				
16	223 315 069	Neck, Filler	1				

*Includes "O" Rings

#201 210 049, Hose Assembly (Incl. Items 7, 11, & 24)



ELEVATOR HYDRAULIC SYSTEM

1014



HANCOCK DIVISION



Page 23

ELEVATOR HYDRAULIC SYSTEM

	Old Number	New Number
1	201-210-052	1557835
2	201-210-053	1557836
3	201-210-062	1557845
4	206-900-127	1550912
5	208-920-006	1550888
6	601-900-121	1550840
7 replaced by	-----	791233
8	919-222-201	25K-40116
9	217-906-301	663094
10	919-222-801	60K-40208
11	802-513-000	4E-7
12	801-113-165	1C-724
13	217-919-306	31F-4
14	217-905-308	1314965
15	217-905-309	545204
16 replaced by	217-906-304	663096
17	802-514-000	4E-8
18	801-114-165	1C-824



THE UNIVERSITY OF CHICAGO

THE UNIVERSITY OF CHICAGO

THE UNIVERSITY OF CHICAGO

THE UNIVERSITY OF CHICAGO

THE UNIVERSITY OF CHICAGO

THE UNIVERSITY OF CHICAGO

THE UNIVERSITY OF CHICAGO

THE UNIVERSITY OF CHICAGO

THE UNIVERSITY OF CHICAGO

THE UNIVERSITY OF CHICAGO

THE UNIVERSITY OF CHICAGO

THE UNIVERSITY OF CHICAGO

THE UNIVERSITY OF CHICAGO

THE UNIVERSITY OF CHICAGO

THE UNIVERSITY OF CHICAGO

THE UNIVERSITY OF CHICAGO

THE UNIVERSITY OF CHICAGO

THE UNIVERSITY OF CHICAGO

THE UNIVERSITY OF CHICAGO

THE UNIVERSITY OF CHICAGO

THE UNIVERSITY OF CHICAGO

THE UNIVERSITY OF CHICAGO

THE UNIVERSITY OF CHICAGO

THE UNIVERSITY OF CHICAGO

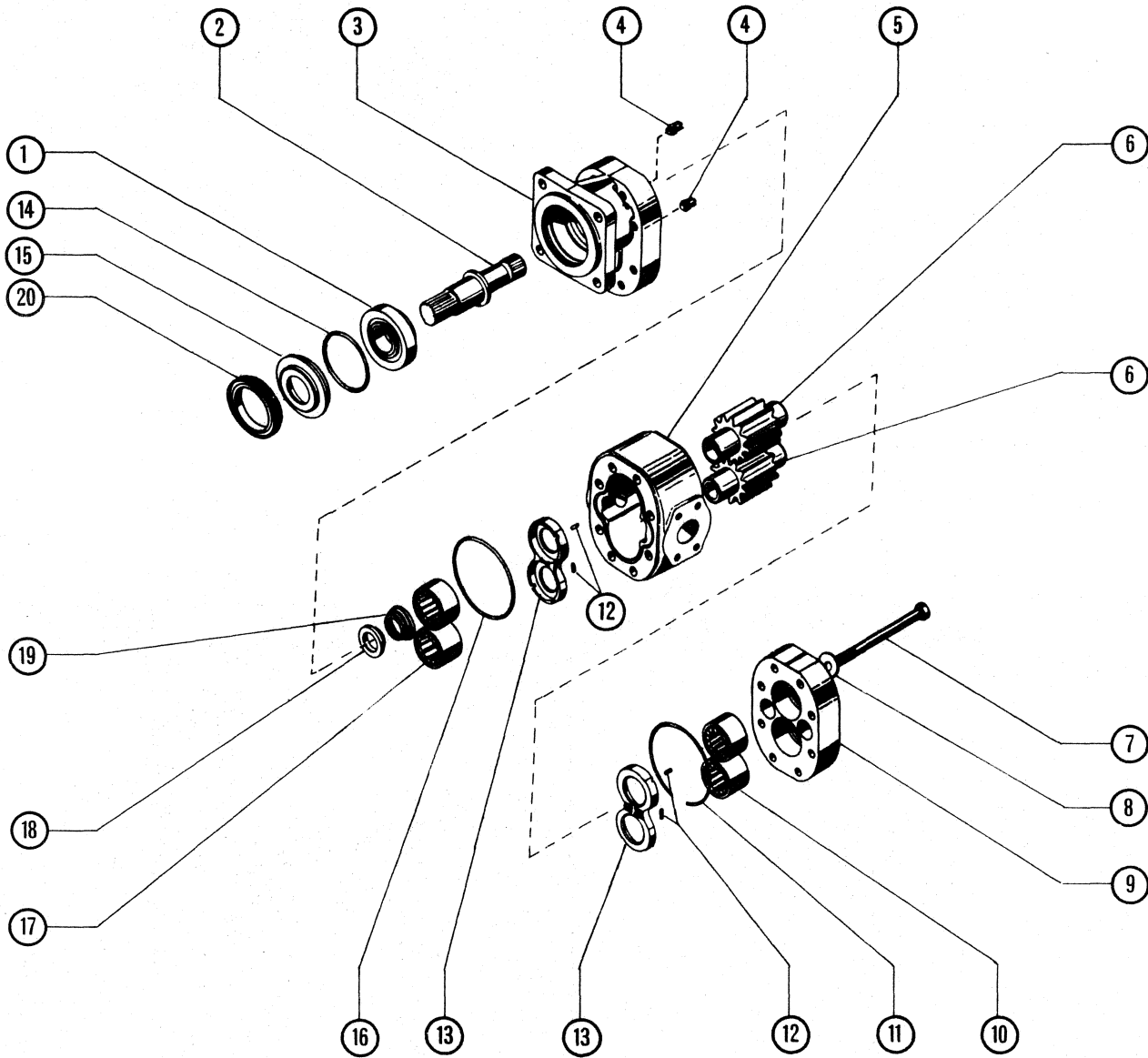
THE UNIVERSITY OF CHICAGO

THE UNIVERSITY OF CHICAGO

THE UNIVERSITY OF CHICAGO

THE UNIVERSITY OF CHICAGO

REF.	PART NUMBER	DESCRIPTION	QTY.
<u>ELEVATOR HYDRAULIC SYSTEM</u>			
1	201 210 052	Hydraulic Line	1
2	201 210 053	Hydraulic Line	1
3	201 210 062	Hydraulic Line - Drain	1
4	206 900 127	Motor, Hydraulic - See Index	1
5	208 920 006	Hose* - 1 1/4 x 72	2
6	601 900 121	Gearbox, Elevator - See Index	1
7	208 908 003	Hose - 1/2 x 43 1/4	1
8	919 222 201	"O" Ring	4
9	217 906 301	Flange Split (Pair)	4
10	919 222 801	"O" Ring	2
11	802 513 000	Lockwasher	16
12	801 113 165	Capscrew	16
13	217 919 306	Adapter, Union - 90°	1
14	217 905 308	Adapter, Union	1
15	217 905 309	Adapter, Union	1
16	217 906 103	Flange, Split (Pair)	2
17	802 514 000	Lockwasher	8
18	801 114 165	Capscrew	8
*Includes "O" Rings			



HYDRAULIC PUMP

1015

REF.	PART NUMBER	DESCRIPTION	QTY.	REF.	PART NUMBER	DESCRIPTION	QTY.
1	202 900 491	Pump Assembly	1	15	202 900 484	Seal and Retainer*	1
	902 030 005	Cup, Bearing	1	16	206 900 147	'O' Ring*	1
	903 013 704	Cone, Bearing	1	17	206 900 152	Bearing	2
2	206 900 144	Shaft	1	18	206 900 155	Bushing	1
3	206 900 160	Cover	1	19	206 900 156	Spring	1
4	206 900 154	Valve, Check	2	20	206 900 158	Retainer Ring	1
5	202 900 481	Housing	1				
6	206 900 097	Gear (Serviced as set only)	2				
7	206 900 143	Capscrew	8				
8	206 900 142	Washer	8				
9	206 900 153	Cover	1				
10	206 900 152	Bearing	2				
11	206 900 147	'O' Ring	1				
12	206 900 146	Seal, Pocket*	2	*	202 900 498	Seal Kit (Includes Items 12, 14, 15, 16)	
13	206 900 148	Plate, Thrust	1				
14	206 900 089	'O' Ring*	1				



HANCOCK DIVISION



Page 24

HYDRAULIC PUMP

	Old Number	New Number
A	202-900-491	1550309
1	902-030-005	1313731
	903-013-704	1570291
2	206-900-144	1551214
3	206-900-160	1551221
4	206-900-154	1551218
5	202-900-481	1550305
6	206-900-097	1551201
7	206-900-143	1C-520
8	206-900-142	570988
9	206-900-153	1551217
10	206-900-152	1566365
11	206-900-147	1566616
12	206-900-146*	1551208
13	206-900-148	1551215
14	206-900-089*	25K-40224
15	202-900-484*	1550637
16	206-900-147*	1566616
17	206-900-152	1566365
18	206-900-155	1551219
19	206-900-156	1551220
20	206-900-158	1566614
*	202-900-498	1550316

Seal Kit includes items 12, 14, 15, 16.



HANCOCK DIVISION



Page 25

HYDRAULIC MOTOR

	Old Number	New Number
A	206-900-127	1550912
NS	206-900-133	1551030
11	206-900-108	1550917
2	206-900-120	1550914
NS	206-900-131	1551031
3A	Kit	
3B	Kit	
3C	Kit	
3D	Kit	
3E	Kit	
3F	Kit	
3G	Kit	
3H	Kit	
4	206-900-123	1550916
5	206-900-109	1550921
6	206-900-065	892125
7	801-116-175	1C-1028
8	206-900-119	1550913
9	206-900-063	654299
10	206-900-062	658128
11	206-900-061	799371
12	802-516-000	4E-10
13	206-900-125	1550915
14	206-900-135	1550924
15	206-900-117	1568757
16	206-900-118	1550923
17	206-900-052	946227
18	206-900-112	1568754
19	206-900-110	17C-1292
20	206-900-116	1550922
21	206-900-115	1568755

1000

1000

1000

1000

1000

1000

1000

1000

1000

1000

1000

1000

1000

1000

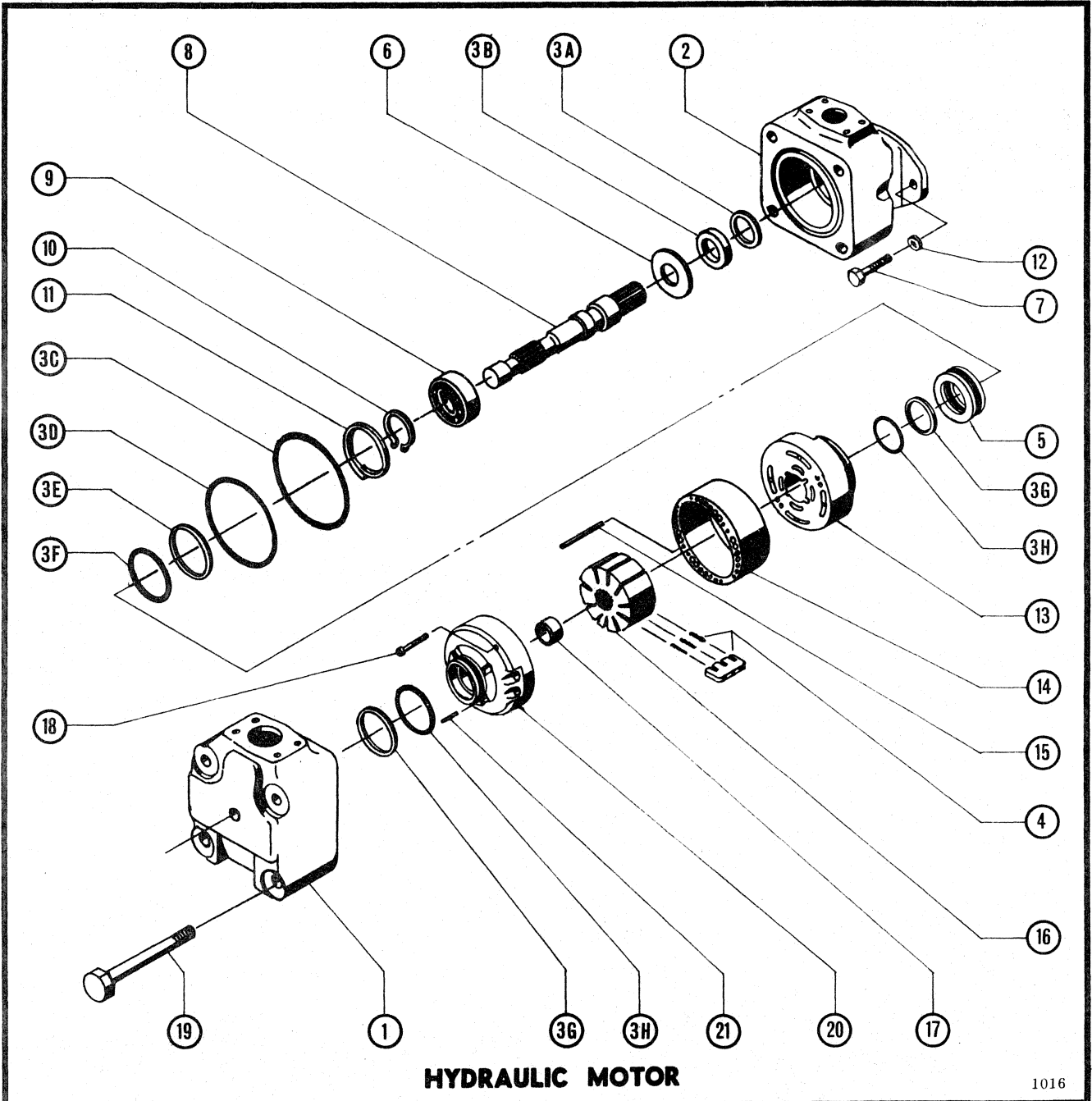
1000

1000

1000

1000

1000

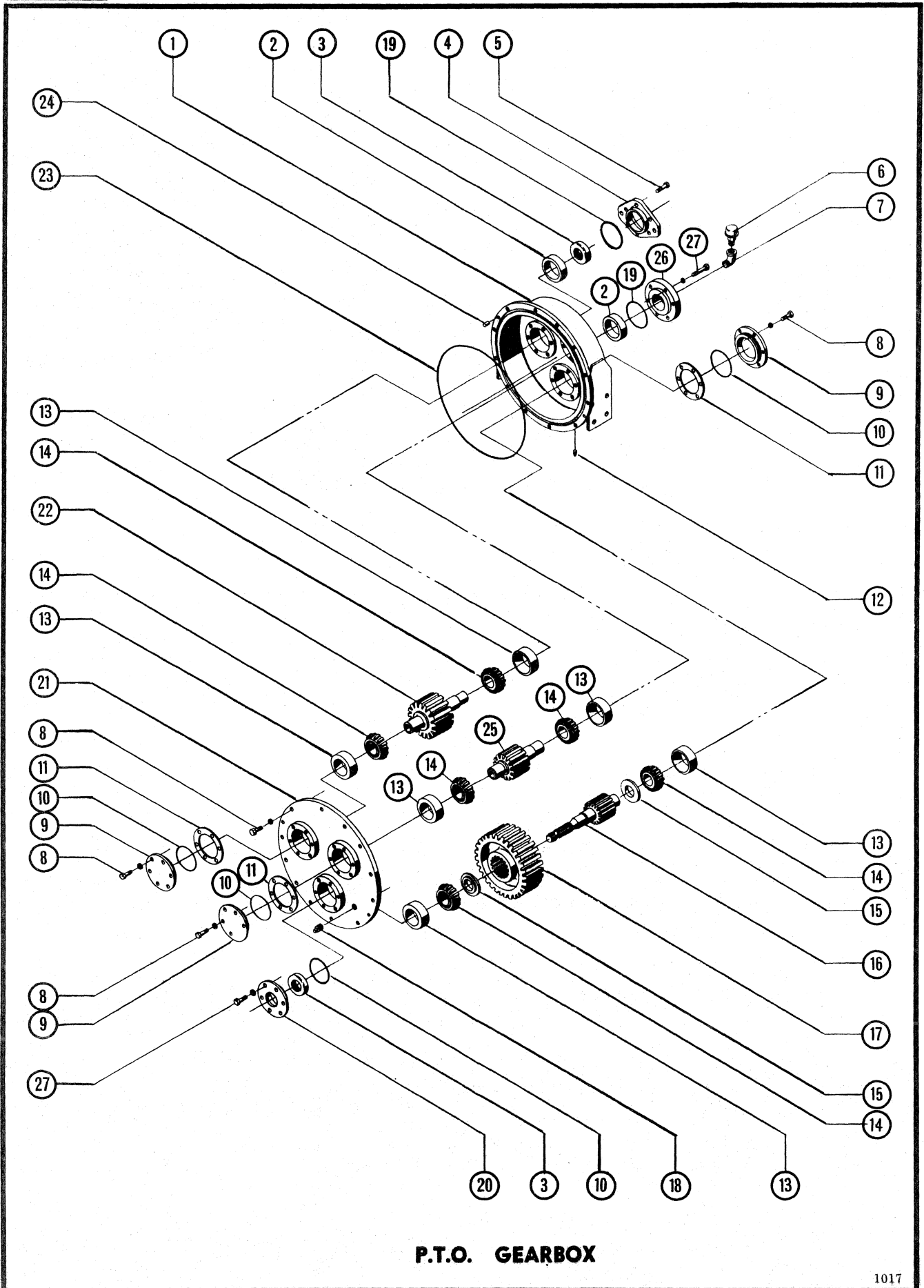


HYDRAULIC MOTOR

1016

REF.	PART NUMBER	DESCRIPTION	QTY.	REF.	PART NUMBER	DESCRIPTION	QTY.
	206 900 127	HYDRAULIC MOTOR ASSEMBLY	1	7	801 116 175	Capscrew	2
NS	206 900 133	Cartridge Kit (Incl. 3A Thru 3F, 4, & 13 Thru 21)	1	8	206 900 119	Shaft	1
1	206 900 108	Cover	1	9	206 900 063	Bearing	1
2	206 900 120	Body	1	10	206 900 062	Snap Ring	1
NS	206 900 131	Seal Kit Includes:	1	11	206 900 061	Lock Ring	1
3A	Kit	Wiper	1	12	802 516 000	Lockwasher	2
3B	Kit	Shaft Seal	1	13	206 900 125	Pressure Plate	1
3C	Kit	"O" Ring	1	14	206 900 135	Ring	1
3D	Kit	"O" Ring	1	15	206 900 117	Pin	2
3E	Kit	Back-Up Ring	1	16	206 900 118	Rotor	1
3F	Kit	"O" Ring	1	17	206 900 052	Bushing	1
3G	Kit	Back-Up Ring	2	18	206 900 112	Screw	2
3H	Kit	"O" Ring	2	19	206 900 110	Bolt	4
4	206 900 123	Vane Kit*	1	20	206 900 116	Pressure Plate Sub-Assy. (Incl. Bushing)	1
5	206 900 109	Hub Adapter	1	21	206 900 115	Pin	2
6	206 900 065	Washer	1			*Vane Kit Incl. 10 Vanes & 40 Springs	

ALWAYS STATE MODEL AND SERIAL NUMBER, WHEN ORDERING PARTS



P.T.O. GEARBOX

1017



HANCOCK DIVISION



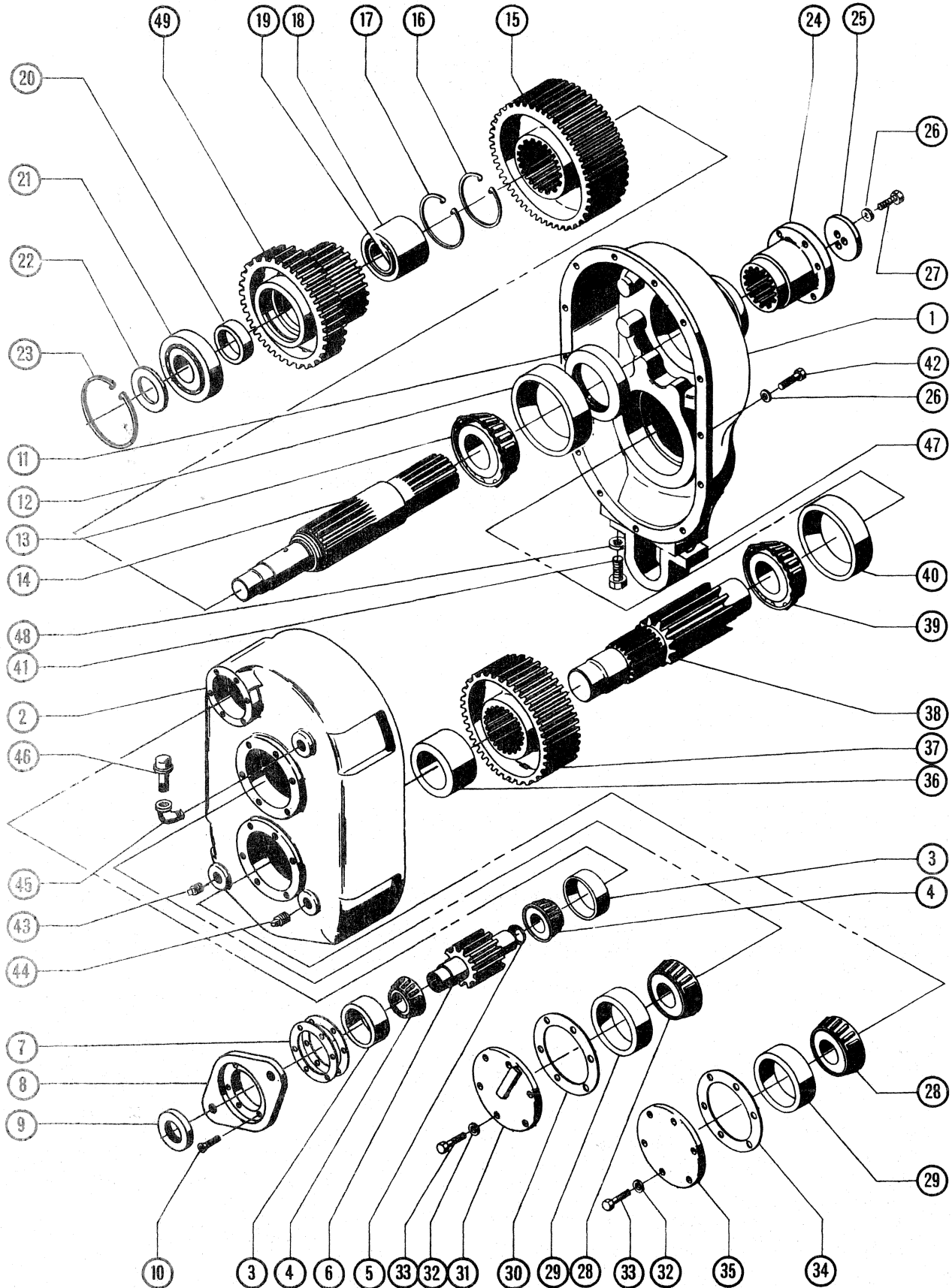
Page 27

PTO GEARBOX

	Old Number	New Number
A	601-210-044	1561611
1	-----	1552035
2	601-210-012	1561589
3	917-017-501	601758
4	601-900-143	1551561
5	801-412-155	9G-620
6	220-900-005	1551419
7	212-908-103	26F-4
8	801-112-125	1C-612
	802-512-000	4E-6
9	601-210-036	1561603
10	919-223-401	25K-40300
11	601-210-025	1561596
NS	601-210-026	1561597
NS	601-210-027	1561598
12	212-905-102	1566344
13	902-032-601	654166
14	903-017-505	713974
15	601-210-008	1561586
16	601-210-009	1561587
17	601-187-009	1561475
18	212-906-101	13F-8
19	919-223-601	25K-40308
20	601-210-037	1561604
21	-----	1552035
22	601-210-013	1561590
23	919-246-101	1572078
24	804-812-130	214118
25	601-210-011	1561588
26	601-210-014	1561591
27	801-112-165	1C-624

REF.	PART NUMBER	DESCRIPTION	QTY.
		<u>PTO GEARBOX</u>	
	601 210 044	Gearbox Assembly	1
1	001 552 035	Housing and Cover (Set)	1
2	601 210 012	Spacer, Bearing	2
3	917 017 501	Seal, Oil	2
4	601 900 143	Cover, Output*	1
5	801 412 155	Capscrew, Flat Socket Head	6
6	220 900 005	Breather	1
7	212 908 103	Street Elbow, Reducing	1
8	801 112 125	Capscrew, Hexhead	30
	802 512 000	Lockwasher	30
9	601 210 036	Cap, Bearing	3
10	919 223 401	"O" Ring	4
11	601 210 025	Shim - .005	AR
NS	601 210 026	Shim - .007	AR
NS	601 210 027	Shim - .020	AR
12	212 905 102	Plug	1
13	902 032 601	Cup, Bearing	6
14	903 017 505	Cone, Bearing	6
15	601 210 008	Spacer, Gear	2
16	601 210 009	Shaft, Input - 20T & 21 Spline	1
17	601 187 009	Gear - 55T	1
18	212 906 101	Plug	1
19	919 223 601	"O" Ring	2
20	601 210 037	Cap, Input Bearing	1
21	001 552 035	Housing and Cover (Set)	1
22	601 210 013	Gear - 26T (Output on pullers having 1000 RPM PTO*)	1
23	919 246 101	"O" Ring, Housing	1
24	804 812 130	Pin, Dowel	2
25	601 210 011	Gear - 14T (Output on pullers having 540 RPM PTO*)	1
26	601 210 014	Cap, Bearing*	1
27	801 112 165	Capscrew, Hexhead	6

*To Convert 1000 RPM to 540 RPM Interchange Items 4 & 26



ELEVATOR GEARBOX



HANCOCK DIVISION

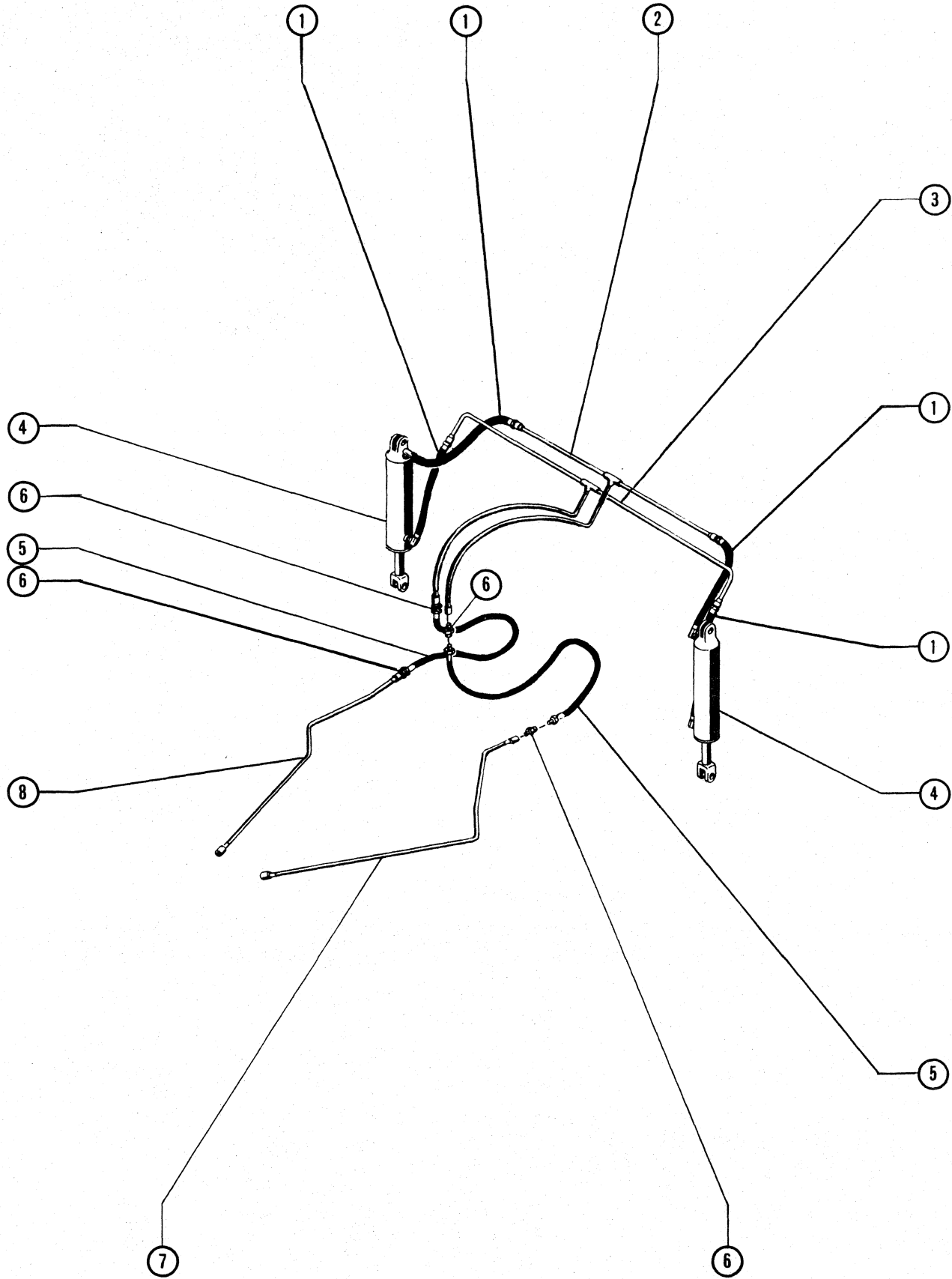


Page 29

GEARBOX ASSEMBLY

	Old Number	New Number		Old Number	New Number
A	601-900-121	¹⁵⁷¹⁵⁰⁴ 1550840	26	802-514-000	4E-8
1	601-900-141	1565219	27	801-114-166	2C-824
2	601-900-140	1565218	28	903-020-007	658970
3	replaced by 902-032-601	654166	29	902-044-301	710790
4	903-017-901	791943	30	-----	1563593
5	925-000-201	12F-106	31	601-900-177	1565231
6	601-900-144	1551562	32	802-512-000	4E-6
7	-----	1563597	33	801-112-145	1C-616
8	601-900-143	1551561	34	-----	1563593
9	replaced by 917-017-508	1550988	35	601-900-142	1566649
10	-----	1550643	36	601-900-147	1551565
11	917-037-502	111482	37	601-187-009	1561475
12	902-052-502	755873	38	601-900-145	1551563
13	903-033-101	1313684	39	903-026-203	742273
14	601-900-146	1551564	40	902-048-104	731994
15	601-187-016	1561482	41	801-117-185	1C-1232
16	601-900-159	1551571	42	801-114-165	1C-824
17	911-037-501	655071	43	212-906-101	13F-8
18	906-030-001	763196	44	212-905-102	1566344
19	906-030-002	1315187	45	212-908-103	26F-4
20	601-900-148	1551566	46	220-900-005	1551419
21	901-023-602	713999	47	501-205-020	1561110
22	601-900-149	1551567	48	802-517-000	4E-12
23	911-043-301	660411	49	601-900-150	1551568
24	601-900-138	1551560	NS	804-817-170	1313948
25	601-900-158	1565221			

REF.	PART NUMBER	DESCRIPTION	QTY.	REF.	PART NUMBER	DESCRIPTION	QTY.
		<u>GEARBOX ASSEMBLY</u>					
	601 900 121	GEARBOX ASSEMBLY	1	26	802 514 000	Lockwasher	3
1	601 900 141	Output Housing	1	27	801 114 166	Capscrew	17
2	601 900 140	Input Housing	1	28	903 020 007	Bearing Cone	2
3	902 036 501	Bearing Cup	2	29	902 044 301	Bearing Cup	2
4	903 017 901	Bearing Cone	2	30	601 900 155	Shim	AR
5	925 000 201	Expansion Plug 1 3/8 inch	1	31	601 900 177	Output Shaft Cover	1
6	601 900 144	Input Shaft - 13 T	1	32	802 512 000	Lockwasher	12
7	601 900 154	Shim	AR	33	801 112 145	Capscrew	12
8	601 900 143	Input Cover	1	34	601 900 151	Shim	AR
9	917 047 503	Oil Seal	1	35	601 900 142	Counter Shaft Cover	1
10	601 900 171	Screw	6	36	601 900 147	Spacer	1
11	917 017 507	Oil Seal	1	37	601 187 009	Counter Gear - 55 T	1
12	902 052 502	Bearing Cup	1	38	601 900 145	Counter Shaft - 13 T	1
13	903 033 101	Bearing Cone	1	39	903 026 203	Bearing Cone	1
14	601 900 146	Output Shaft	1	40	902 048 104	Bearing Cup	1
15	601 187 016	Output Gear - 44 T	1	41	801 117 185	Capscrew	2
16	601 900 159	Snap Ring	1	42	801 114 165	Capscrew	14
17	911 037 501	Snap Ring	1	43	212 906 101	Plug, Level	1
18	906 030 001	Bearing Shell With Needles	1	44	212 905 102	Magnetic Drain Plug	1
19	906 030 002	Bearing Inner Race	1	45	212 914 602	Street Elbow	1
20	601 900 148	Spacer	1	46	220 900 005	Breather	1
21	901 023 602	Ball Bearing	1	47	501 205 020	Bracket	1
22	601 900 149	Spacer	1	48	802 517 000	Lockwasher	2
23	911 043 301	Snap Ring	1	49	601 900 150	Output Gear - 60 and 31 T	1
24	601 900 138	Flanged Hub	1	NS	804 817 017	Dowel	2
25	601 900 158	Lockplate	1				



LIFT HYDRAULIC LINES

1019



HANCOCK DIVISION



Page 31

LIFT HYDRAULIC LINES

	Old Number	New Number
1	replaced by -----	1562836*
2	replaced by -----	1562669
3	replaced by -----	1562670
4	replaced by -----	1567223
5	208-910-002	1551407
6	217-905-309	545204*
7	replaced by -----	1562673
8	replaced by -----	1562674
9	Add 211-112-032	5K-624
10	Add 217-932-301	1563154
11	Add 208-910-002	1551407
*	919-031-201	104243

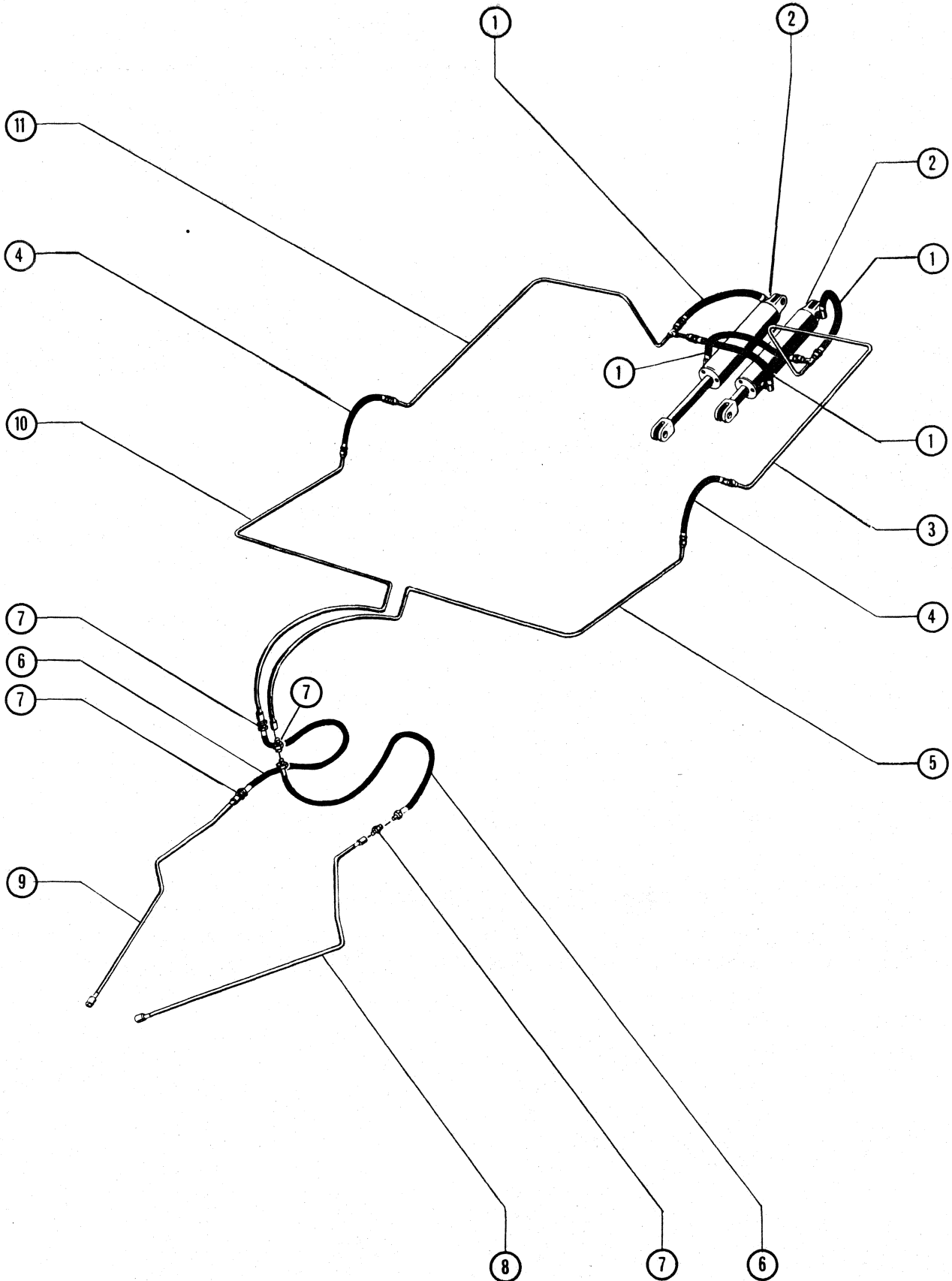
"O" Ring included with items 1-6.



HANCOCK DIVISION



REF.	PART NUMBER	DESCRIPTION	QTY.
		<u>LIFT HYDRAULIC LINES</u>	
1	208 912 009	Hose* - 3/4 x 30	4
2	201 210 048	Hydraulic Line	1
3	201 210 057	Hydraulic Line	1
4	209 040 030	Cylinder, Hydraulic - See Index	2
5	208 910 002	Hose - 5/8 x 66	2
6	217 905 309	Adapter, Union*	4
7	201 210 068	Hydraulic Line	1
8	201 210 069	Hydraulic Line	1
*	919 031 201	"O" Ring (Included with items 1-6)	12



EJECTION HYDRAULIC LINES

1020



HANCOCK DIVISION



Page 33

EJECTION HYDRAULIC LINES

	Old Number	New Number
1	replaced by -----	1562536*
2	replaced by -----	1567223
3	201-166-002	1557253
4	208-912-010	1550535*
5	201-210-045	1557828
6	208-910-002	1551425
7	217-905-309	545204*
8	replaced by -----	1562667
9	replaced by -----	1562668
10	replaced by -----	1562672
11	201-166-005	1557256
*	919-031-201	91F-8

"O" Ring included with items 1, 4, 7.

1920
1921
1922

1923

1924
1925

1926
1927
1928

1929

1930

1931

1932

1933

1934

1935

1936

1937

1938

1939

1940

1941

1942

1943

1944

1945

1946

1947

1948

1949

1950

1951

1952

1953

1954

1955

1956

1957

1958

1959

1960

1961

1962

1963

1964

1965

1966

1967

1968

1969

1970

1971

1972

1973

1974

1975

1976

1977

1978

1979

1980

1981

1982

1983

1984

1985

1986

1987

1988

1989

1990

1991

1992

1993

1994

1995

1996

1997

1998

1999

2000

2001

2002

2003

2004

2005

2006

2007

2008

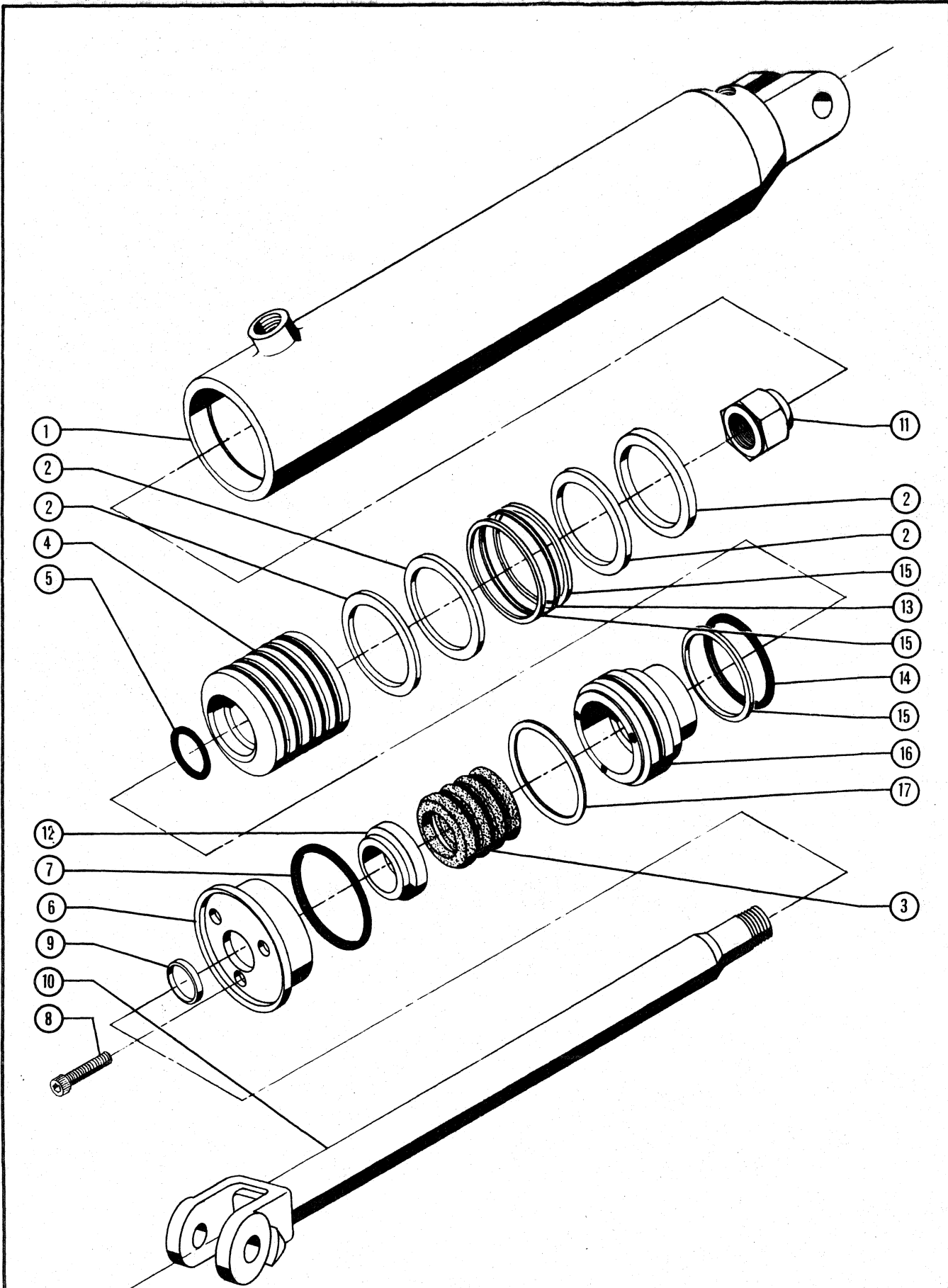
2009

2010

2011

2012

REF.	PART NUMBER	DESCRIPTION	QTY.
<u>EJECTION HYDRAULIC LINES</u>			
1	208 912 009	Hose* - 3/4 x 30	4
2	209 040 030	Cylinder - See Index	2
3	201 166 002	Hydraulic Line	1
4	208 912 010	Hose* - 3/4 x 30	2
5	201 210 045	Hydraulic Line	1
6	208 910 002	Hose - 5/8 x 66	2
7	217 905 309	Adapter, Union*	4
8	201 210 070	Hydraulic Line	1
9	201 210 071	Hydraulic Line	1
10	201 210 046	Hydraulic Line	1
11	201 166 005	Hydraulic Line	1
*	919 031 201	"O" Ring (Included with items 1-4-7)	16



LIFT AND EJECTION HYDRAULIC CYLINDER

1021



HANCOCK DIVISION



Page 35

HYDRAULIC CYLINDER (LIFT & EJECTION)

	Old Number	New Number
A	replaced by -----	1567223
1	replaced by -----	1562530
2	925-000-701	1550562
3	replaced by -----	1569520
4	209-040-003	1562788
5	919-221-601	25K-40104
6	209-040-016	1562795*
7	replaced by 919-225-201	25K-40400
8	801-312-145	11G-616
9	917-016-203	1550560
10	replaced by 209-040-007	1562791
11	replaced by -----	1502802 1576229 SCN-1540
12	209-040-017	1562796*
13	921-234-201	1313783
14	919-234-201	25K-60320
15	920-834-201	1550563
16	209-040-004	1562789
17	913-040-001	763750
*	209-040-006	1562790

Gland Assembly includes items 6 & 12.



HANCOCK DIVISION



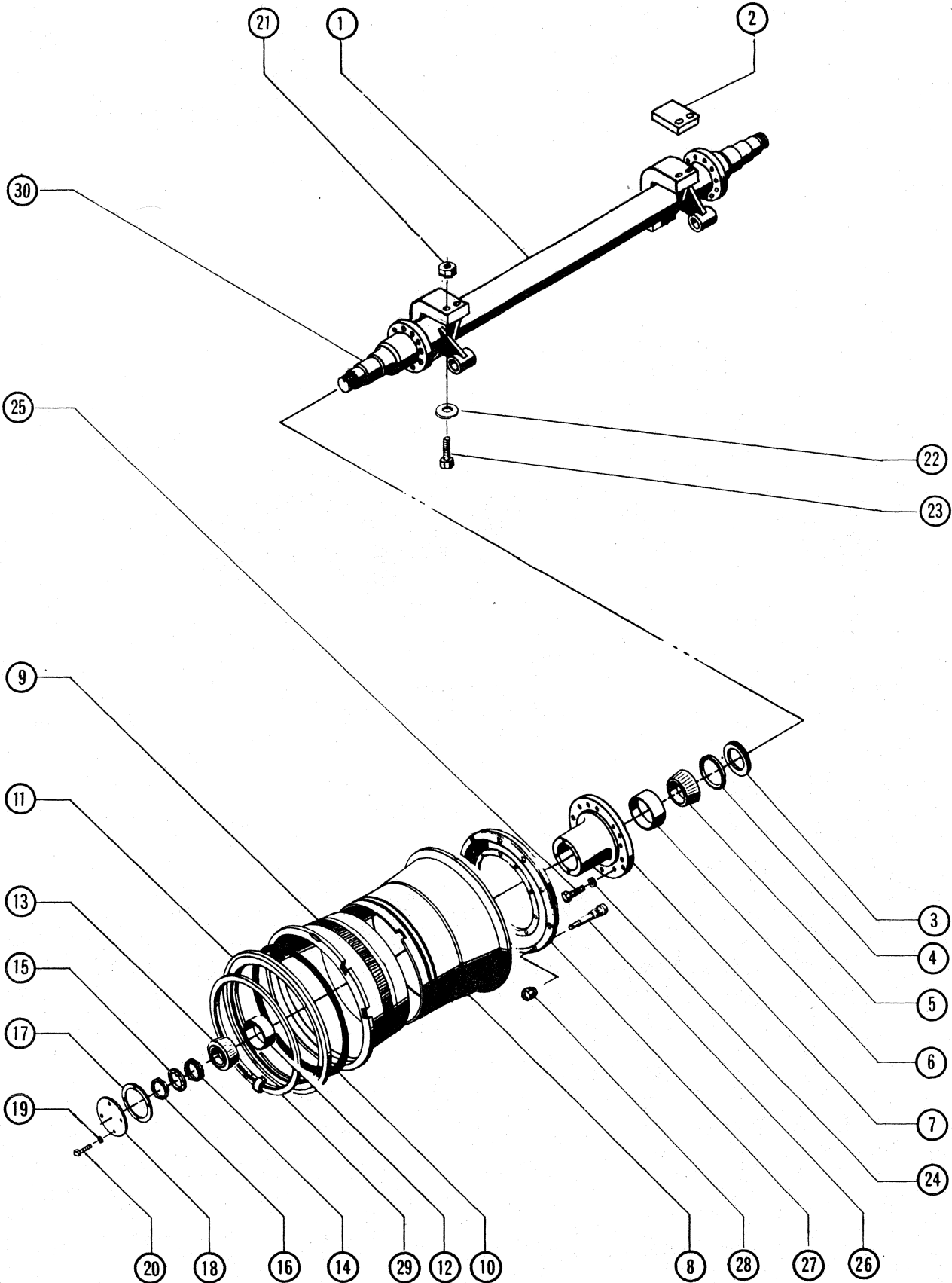
Page 37

REAR AXLE & WHEEL

	Old Number	New Number
1	replaced by -----	1552268
2	102-193-106	1554717
3	401-161-026*	1559148
4	401-161-027*	1559149
5	903-035-001	662739
6	902-063-801	711368
7	407-166-001	1559744
8	replaced by -----	1559680
9	408-900-003	553956
10	408-900-006	580278
11	408-900-005	551341
12	902-059-101	710990
13	903-031-901	1313683
14	412-900-002	1568668
15	412-900-003	1552013
16	412-900-004	1552010
17	407-161-002	1559739
18	407-161-001	1559738
19	802-512-000	4E-6
20	801-112-145	1C-616
21	replaced by 803-117-003	17D-10
22	802-317-000	619036
23	replaced by 801-117-205	1C-1240
24	802-517-000	4E-12
25	801-117-186	2C-1232
26	Deleted	
27	Deleted	
28	Deleted	
29	408-900-004	580274
30	412-900-001	1552010
*	401-161-025	1559147

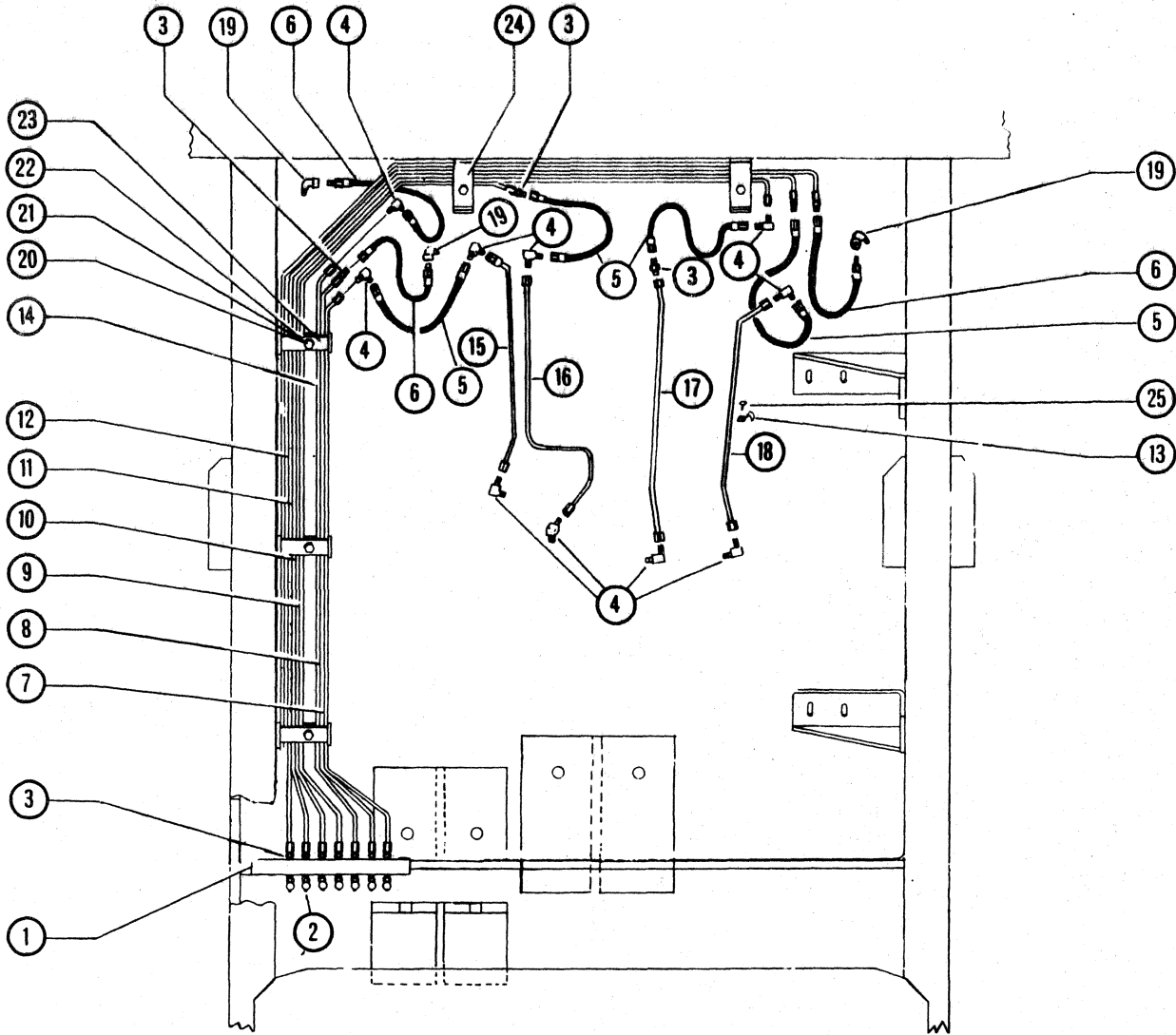
Grease Seal Assembly includes items 3 & 4.

REF.	PART NUMBER	DESCRIPTION	QTY.
		<u>HYDRAULIC CYLINDER (LIFT & EJECTION)</u>	
	209 040 030	HYDRAULIC CYLINDER ASSEMBLY 4"	4
1	209 040 028	Cylinder Barrel	1
2	925 000 701	Piston Ring	4
3	929 000 801	Rod Packing	SET
4	209 040 003	Piston	1
5	919 221 601	O-Ring	1
6	209 040 016	Gland*	1
7	919 224 201	O-Ring	1
8	801 312 145	Socket Head Capscrew	3
9	917 016 203	Seal (Wiper Rod)	1
10	209 040 089	Piston Rod	1
11	209 040 055	Locknut	1
12	209 040 017	Gland Sleeve*	1
13	921 234 201	Quad Ring	1
14	919 234 201	O-Ring	1
15	920 834 201	Backup Ring	3
16	209 040 004	Head	1
17	913 040 001	Retaining Ring	1
	*209 040 006	Gland Assembly (Includes Items 6 and 12)	



REAR AXLE & WHEEL

REF.	PART NUMBER	DESCRIPTION	QTY.
<u>REAR AXLE & WHEEL</u>			
1	401 166 028	Axle, Rear	1
2	102 193 106	Shim	AR
3	401 161 026	Retainer, Seal*	2
4	401 161 027	Seal, Felt*	2
5	903 035 001	Cone, Bearing	2
6	902 063 801	Cup, Bearing	2
7	407 166 001	Hub, Wheel	2
8	406 184 006	Wheel**	2
9	408 900 003	Band, Bead Seat	2
10	408 900 006	"O" Ring, Rim	2
11	408 900 005	Flange, Side	2
12	902 059 101	Cup, Bearing	2
13	903 031 901	Cone, Bearing	2
14	412 900 002	Nut, Inner Spindle	2
15	412 900 003	Locknut, Spindle	2
16	412 900 004	Nut, Outer Spindle	2
17	407 161 002	Gasket, Cover	2
18	407 161 001	Cover, Hub	2
19	802 512 000	Lockwasher	8
20	801 112 145	Capscrew	8
21	803 117 004	Locknut	8
22	802 317 000	Flatwasher	8
23	801 117 246	Capscrew	8
24	802 517 000	Lockwasher	20
25	801 117 186	Capscrew	20
26	820 900 210	Stud, Headed	20
27	406 184 003	Adapter, Wheel	2
28	820 900 112	Nut, Front Cap	20
29	408 900 004	Ring, Wheel Lock	2
30	412 900 001	Spindle, Axle	2
*	401 161 025	Grease Seal Assembly (Incl. Items 3 & 4)	
**		Used With 400 184 001 Wheel Assembly (Incl. Items 8 Thru 11 and 29)	



CENTRAL LUBRICATION

1023

REF.	PART NUMBER	DESCRIPTION	QTY.	REF.	PART NUMBER	DESCRIPTION	QTY.
1	219 198 015	Block, Grease	1	14	219 198 005	Tube	1
2	219 907 001	Zerk	7	15	219 198 011	Tube	1
3	225 901 003	Adapter	17	16	219 198 012	Tube	1
4	225 902 001	Elbow, 90°	8	17	219 198 013	Tube	1
5	208 903 009	Hose	4	18	219 198 014	Tube	1
6	208 903 010	Hose	3	19	212 908 102	Elebow, Street	4
7	219 198 003	Tube	1	20	801 110 145	Capscrew	5
8	219 198 004	Tube	1	21	802 310 000	Flatwasher	5
9	219 198 006	Tube	1	22	803 110 003	Locknut	5
10	219 198 007	Tube	1	23	102 198 109	Clamp	3
11	219 198 008	Tube	1	24	102 198 108	Clamp	2
12	219 198 009	Tube	1	25	804 209 106	Screw, Self Tapping	13
13	922 060 001	Cup, Tube	13				



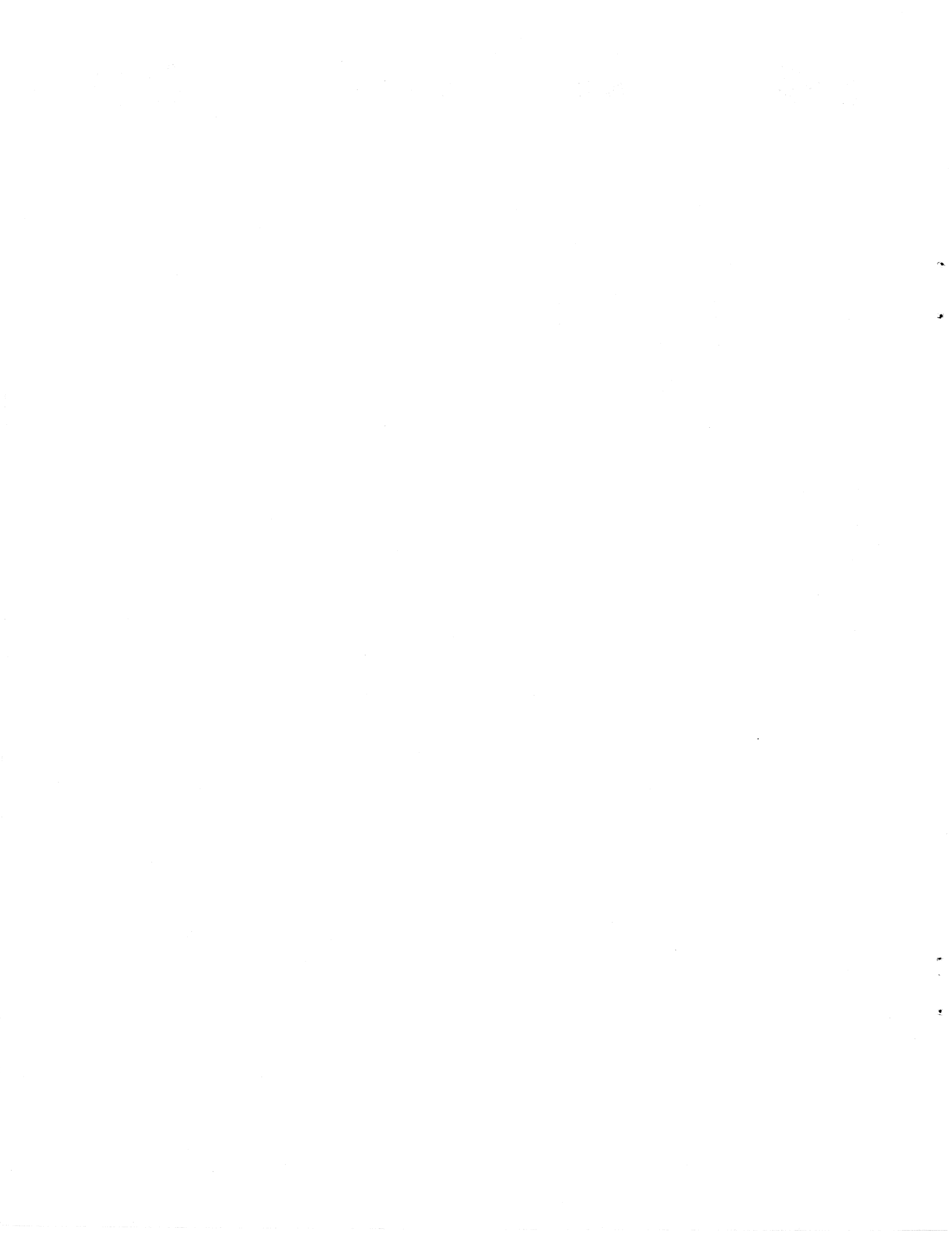
HANCOCK DIVISION

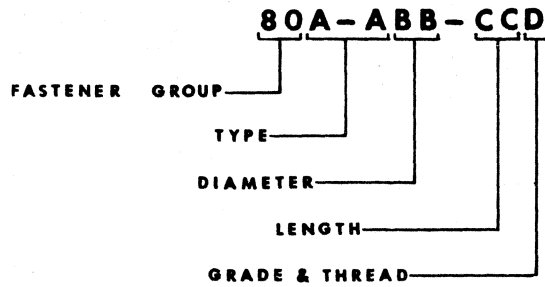


Page 38

CENTRAL LUBRICATION

	Old Number	New Number
1	219-198-015	1558453
2	219-907-001	14H-15
3	225-901-003	1551024
4	225-902-001	1551025
5	208-903-009	1550843
6	208-903-010	1550844
7	219-198-003	1558441
8	219-198-004	1558442
9	219-198-006	1558444
10	219-198-007	1558445
11	219-198-008	1558446
12	219-198-009	1558447
13	922-060-001	5H-1
14	219-198-005	1558443
15	219-198-011	1558449
16	219-198-012	1558450
17	219-198-013	1558451
18	219-198-014	1558452
19	212-908-102	26F-1
20	801-110-145	1C-416
21	802-310-000	655629
22	803-110-003	17D-1
23	102-198-109	1554860
24	102-198-108	1554860
25	804-209-106	64G-1008





EXAMPLE

801-119-345

80A-ABB-CCD

HEX HEAD CAPSCREW 1" x 7" NAT. COARSE

NUT GRADE & THREAD (D)		
SAE GRADE	NUMBER NC	NUMBER NF
A	1	2
B	3	4
C	5	6
D	7	8

BOLT GRADE & THREAD (D)		
SAE GRADE	NUMBER NC	NUMBER NF
None	1	2
3	3	4
5	5	6
8	7	8

CODE	TYPE (AA)
801-1	Hex Head Capscrew
801-2	Square Head Capscrew
801-3	Socket Head Capscrew
801-4	Flat Socket Head Capscrew
801-5	Number 3 Regular Plow Bolt
801-6	Round Head Machine Screw
801-7	Flat Head Machine Screw
801-8	Fillister Head Machine Screw
801-9	Oval Head Machine Screw
802-0	Cup Point Square Head Set Screw
802-1	Cup Point Hex Socket Set Screw
802-2	Type 'U' Drive Screw
802-3	Flat Washer
802-4	SAE Flat Washer
802-5	Lock Washer
802-6	Internal Tooth Lock Washer
802-7	External Tooth Lock Washer
802-8	Hex Nut
802-9	Square Nut
803-0	Castle/Slotted Nut
803-1	Lock Nut
803-2	Jam Nut
803-3	Roll Pin
803-4	Cotter Pin
803-5	Button Head Rivet
803-6	Closed Eye Bolt
803-7	Flat Copper Washer
803-8	Clevis Pin
803-9	Internal and External Tooth Washer
804-0	Weld Nut
804-1	Stud Bolt-Full Base
804-2	Round Head Self-Tapping Screw
804-3	Slotted Headless Set Screw-Cup Point
804-4	Round Head, Square Neck Carriage Bolt
804-5	Hex Washer Head Capscrew
804-6	SAE Standard High Nut
804-7	Wingnut

CODE	DIAMETER (BB)
01	.060(#0)
02	.073(#1)
03	.086(#2)
04	.099(#3)
05	.112(#4)
06	.125(#5)
07	.138(#6)
08	.164(#8)
09	.190(#10)
10	1/4
11	5/16
12	3/8
13	7/16
14	1/2
15	9/16
16	5/8
17	3/4
18	7/8
19	1
20	1-1/8
21	1-1/4
22	1-3/8
23	1-1/2
24	1-5/8
25	1-3/4
26	1-7/8
27	2
28	2-1/4
29	2-1/2
30	2-3/4
31	3
32	.216(#12)
33	.154(#7)

CODE	LENGTH (CC)
01	1/16
02	3/32
03	1/8
04	5/32
05	3/16
06	1/4
07	5/16
08	3/8
09	7/16
10	1/2
11	5/8
12	3/4
13	7/8
14	1
15	1-1/4
16	1-1/2
17	1-3/4
18	2
19	2-1/4
20	2-1/2
21	2-3/4
22	3
23	3-1/4
24	3-1/2
25	3-3/4
26	4
27	4-1/4
28	4-1/2
29	4-3/4
30	5
31	5-1/2
32	6
33	6-1/2
34	7
35	7-1/2
36	8
37	8-1/2
38	9
39	9-1/2
40	10



HANCOCK DIVISION



PARTS NUMBER	PG.	REF.	PARTS NUMBER	PG.	REF.	PARTS NUMBER	PG.	REF.
000 554 843	5	2	201 210 062	23	3	209 040 003	35	4
000 554 843	21	17	201 210 068	31	7	209 040 004	35	16
001 552 035	27	1	201 210 069	31	8	209 040 016	35	6
001 552 035	27	21	201 210 070	33	8	209 040 017	35	12
101 210 019	7	1	201 210 071	33	9	209 040 018	7	15
102 160 012	9	29	201 210 072	21	10	209 040 021	9	30
102 161 092	11	5	201 210 073	21	NS	209 040 021	11	30
102 162 002	7	14	201 270 001	5	12	209 040 021	13	27
102 166 064	9	28	201 270 001	7	2	209 040 028	35	1
102 166 067	9	27	201 270 001	7	5	209 040 030	31	4
102 166 068	9		201 301 050	5	40	209 040 030	33	2
102 166 069	9		201 301 050	21	15	209 040 030	35	
102 166 070	9		202 900 481	24	5	209 040 055	35	11
102 166 071	9		202 900 484	24	15	209 040 089	35	10
102 193 106	37	2	202 900 491	24		212 905 101	5	38
102 198 010	9	11	204 900 320	21	12	212 905 101	21	20
102 198 011	9	NS	206 900 052	25	17	212 905 102	27	12
102 198 021	9	19	206 900 061	25	11	212 905 102	29	44
102 198 053	9	26	206 900 062	25	10	212 906 101	27	18
102 198 064	9	4	206 900 063	25	9	212 906 101	29	43
102 198 072	9	5	206 900 065	25	6	212 908 102	38	19
102 198 073	9	6	206 900 089	24	14	212 908 103	27	7
102 198 074	7	10	206 900 097	24	6	212 912 501	18	11
102 198 074	9	1	206 900 108	25	1	212 914 602	29	45
102 198 099	9	23	206 900 109	25	5	216 906 101	21	11
102 198 104	7	9	206 900 110	25	19	217 905 308	23	14
102 198 104	9	2	206 900 112	25	18	217 905 309	23	15
102 198 105	7	NS	206 900 115	25	21	217 905 309	31	6
102 198 105	9	NS	206 900 116	25	20	217 905 309	33	7
102 198 108	38	24	206 900 117	25	15	217 906 103	21	25
102 198 109	38	23	206 900 118	25	16	217 906 103	23	16
102 198 110	9	8	206 900 119	25	8	217 906 301	21	26
102 900 001	9	37	206 900 120	25	2	217 906 301	23	9
102 900 002	9	38	206 900 123	25	4	217 919 306	23	13
102 900 024	9	34	206 900 125	25	13	217 945 302	21	21
102 900 025	9	32	206 900 127	23	4	219 198 003	38	7
102 900 026	9	33	206 900 127	25		219 198 004	38	8
103 160 001	13	12	206 900 131	25	NS	219 198 005	38	14
103 160 014	13	20	206 900 133	25	NS	219 198 006	38	9
103 160 019	13	29	206 900 135	25	14	219 198 007	38	10
103 160 043	13	18	206 900 142	24	8	219 198 008	38	11
103 160 052	13	13	206 900 143	24	7	219 198 009	38	12
103 160 054	9	48	206 900 144	24	2	219 198 011	38	15
103 160 055	9	14	206 900 146	24	12	219 198 012	38	16
103 160 063	11	13	206 900 147	24	11	219 198 013	38	17
103 160 064	11	14	206 900 147	24	16	219 198 014	38	18
103 161 002	13	26	206 900 148	24	13	219 198 015	38	1
103 161 018	13	9	206 900 152	24	10	219 901 001	5	32
103 161 022	11	27	206 900 152	24	17	219 901 001	7	11
103 161 022	13	7	206 900 153	24	9	219 901 001	9	43
103 161 044	11	2	206 900 154	24	4	219 901 001	14	6
103 161 055	11	9	206 900 155	24	18	219 901 001	15	15
103 161 055	13	6	206 900 156	24	19	219 901 001	17	38
103 161 061	13	17	206 900 158	24	20	219 901 001	18	12
103 161 063	11	23	206 900 160	24	3	219 901 002	9	40
103 161 069	11	19	207 930 013	21		219 901 005	20	4
103 161 076	11	16	207 930 017	21		219 902 001	17	16
103 161 080	11	26	207 930 018	21		219 902 002	7	19
103 198 001	13	NS	207 930 019	21		219 907 001	38	2
103 198 003	14	3	207 930 020	21		220 900 005	27	6
103 198 009	13	28	207 930 023	21		220 900 005	29	46
103 198 010	14	7	207 930 024	21		223 210 033	5	39
103 198 011	14	2	207 930 027	21		223 210 033	21	14
103 198 012	13	23	207 930 028	21		223 315 069	5	1
103 198 012	14		207 930 033	21	13	223 315 069	21	16
103 198 014	13	21	208 903 009	38	5	225 901 003	38	3
103 198 026	11	1	208 903 010	38	6	225 902 001	38	4
201 166 002	33	3	208 906 093	5	4	401 161 026	5	29
201 166 005	33	11	208 906 093	21	19	401 161 026	37	3
201 210 005	21	7	208 908 003	21	2	401 161 027	5	28
201 210 008	21	8	208 908 003	23	7	401 161 027	37	4
201 210 017	21	9	208 908 017	21	4	401 166 028	37	1
201 210 022	5	11	208 910 002	31	5	401 181 002	5	36
201 210 023	5	9	208 910 002	33	6	401 181 005	5	33
201 210 038	7	4	208 912 009	31	1	401 181 006	5	41
201 210 038	7	6	208 912 009	33	1	401 181 074	5	31
201 210 045	33	5	208 912 010	33	4	401 210 001	5	37
201 210 046	33	10	208 920 006	23	5	401 210 016	5	6
201 210 048	31	2	208 920 019	21	5	401 210 017	7	17
201 210 052	23	1	208 920 021	21	1	401 210 019	7	18
201 210 053	23	2	208 920 022	21	3	401 210 026	5	14
201 210 057	31	3	208 920 024	21	6	401 210 027	5	NS

ALWAYS STATE MODEL AND SERIAL NUMBER, WHEN ORDERING PARTS



HANCOCK DIVISION



PARTS NUMBER	PG.	REF.	PARTS NUMBER	PG.	REF.	PARTS NUMBER	PG.	REF.
406 184 003	5	42	601 210 008	27	15	909 010 001	13	3
406 184 003	37	27	601 210 009	27	16	909 020 001	9	3
406 184 006	37	8	601 210 011	27	25	910 022 502	20	6
407 161 001	5	18	601 210 012	27	2	911 024 401	14	5
407 161 001	37	18	601 210 013	27	22	911 037 501	29	17
407 161 002	5	19	601 210 014	27	26	911 043 301	29	23
407 161 002	37	17	601 210 025	27	11	913 040 001	35	17
407 166 001	5	25	601 210 026	27	NS	917 015 001	18	7
407 166 001	37	7	601 210 027	27	NS	917 016 203	35	9
408 900 003	37	9	601 210 036	27	9	917 017 501	27	3
408 900 004	37	29	601 210 037	27	20	917 017 507	29	11
408 900 005	37	11	601 210 044	27		917 047 503	29	9
408 900 006	37	10	601 900 121	23	6	917 048 501	15	6
412 900 001	37	30	601 900 121	29		919 221 401	17	NS
412 900 002	5	22	601 900 138	29	24	919 221 601	35	5
412 900 002	37	14	601 900 140	29	2	919 222 201	21	22
412 900 003	5	21	601 900 141	29	1	919 222 201	23	8
412 900 003	37	15	601 900 142	29	35	919 222 801	21	23
412 900 004	5	20	601 900 143	27	4	919 222 801	23	10
412 900 004	37	16	601 900 143	29	8	919 223 401	27	10
501 148 001	15	13	601 900 144	29	6	919 223 601	27	19
501 161 104	17	14	601 900 145	29	38	919 224 201	35	7
501 166 031	17	17	601 900 146	29	14	919 234 201	35	14
501 166 039	17	15	601 900 147	29	36	919 246 101	27	23
501 166 050	17	12	601 900 148	29	20	920 821 401	17	40
501 166 057	17	34	601 900 149	29	22	920 834 201	35	15
501 166 057	18		601 900 150	29	49	921 234 201	35	13
501 166 058	18	1	601 900 151	29	34	922 010 001	21	24
501 166 059	18	2	601 900 154	29	7	922 060 001	38	13
501 166 060	18	8	601 900 155	29	30	923 010 002	14	1
501 166 061	18	4	601 900 158	29	25	923 010 002	18	13
501 176 015	15	4	601 900 159	29	16	925 000 106	18	6
501 176 016	15	5	601 900 171	29	10	925 000 201	29	5
501 176 020	15	14	601 900 177	29	31	925 000 513	20	5
501 184 002	17	3	602 900 030	20	1	925 000 701	35	2
501 184 007	17	5	602 900 042	20	NS	929 000 801	35	3
501 184 024	17	27	602 900 043	20	2			
501 198 002	17	8	602 900 043	20	10			
501 198 006	9	NS	602 900 096	20	9			
501 198 007	9	20	602 900 097	20	7			
501 198 045	17	6	602 900 098	20	3			
501 198 045	17	22	602 900 099	20	8			
501 198 055	17	11	608 210 001	20				
501 198 057	15	1	608 210 003	20	11			
501 198 058	15		608 210 004	20	12			
501 198 058	17	20	820 900 105	15	11			
501 198 059	15	9	820 900 112	37	28			
501 198 061	17	19	820 900 127	7	8			
501 198 062	17	1	820 900 210	37	26			
501 198 079	17		820 900 237	5	5			
501 198 080	17	31	820 900 429	18	5			
501 198 086	17	21	820 900 601	13	11			
501 198 097	17	37	820 900 602	11	28			
501 198 100	17	28	820 900 801	15	10			
501 198 101	17	29	901 011 801	14	4			
501 198 106	17	9	901 011 809	18	3			
501 198 107	17	13	901 023 602	29	21			
501 198 108	9	47	902 030 005	24	1			
501 198 128	17	39	902 032 601	27	13			
501 198 129	17	36	902 032 601	29	3			
501 198 131	17	41	902 041 201	15	8			
501 205 020	29	47	902 044 301	29	29			
501 210 001	17		902 048 104	29	40			
501 900 009	19	8	902 052 502	29	12			
501 900 092	17	26	902 059 101	5	24			
501 900 093	19	NS	902 059 101	37	12			
501 900 094	19	1	902 063 801	5	26			
501 900 095	19	12	902 063 801	37	6			
501 900 096	19	9	903 013 704	24				
501 900 098	19	7	903 017 505	27	14			
501 900 099	19	11	903 017 901	29	4			
501 900 100	19	10	903 020 007	29	28			
501 900 101	19	6	903 022 501	15	7			
501 900 102	19	14	903 026 203	29	39			
501 900 103	19	13	903 031 901	5	23			
501 900 107	19	3	903 031 901	37	13			
501 900 108	19	5	903 033 101	29	13			
501 900 109	19	4	903 035 001	5	27			
501 900 111	19	2	903 035 001	37	5			
601 187 009	27	17	906 030 001	29	18			
601 187 009	29	37	906 030 002	29	19			
601 187 016	29	15	909 010 001	11	4			

ALWAYS STATE MODEL AND SERIAL NUMBER, WHEN ORDERING PARTS