

COMPONENT LOCATIONS			
Description	Part Number	Machine Location	Schematic Location
Accumulator - Hydraulic (Pilot Oil)	164-6981	1	B-6
Cylinder Gp - Boom	NOTE A	2	G-3
Cylinder Gp - Bucket	NOTE A	3	G-10
Cylinder Gp - Stick	NOTE A	4	G-9
Filter Gp - Oil (Case Drain)	126-2075	5	A-6
Filter Gp - Oil (Hydraulic Return)	188-4140	6	A-9
Filter Gp - Oil (Pilot)	158-8987	7	A-5
Manifold Gp - Control (Pilot Oil)	215-5037	8	B-8
Motor Gp - Piston	234-4638	9	A-10
Motor Gp - Swing	200-3373	10	G-8
Motor Gp - Travel	271-6376	11	G-5, G-7
Pump Gp - Piston (Hydraulic Fan)	259-0815	12	B-4
Pump Gp - Piston (Main)	283-6116	13	B-3
Swivel Gp	234-4440	14	F-6
Valve Gp - Check (Oil Cooler Bypass)	190-7745	15	B-10
Valve Gp - Load Control (Boom Drift Red, Relief Line)	255-5683	16	E-3
Valve Gp - Load Control (Stick Drift Red, Relief Line)	255-5680	17	E-7
Valve Gp - Main Control	285-1536	18	D-2
Valve Gp - Pilot Control (Left Joystick)	270-5951	19	D-10
Valve Gp - Pilot Control (Right Joystick)	270-5952	20	D-9
Valve Gp - Pilot (Travel)	270-5947	21	E-10
Valve Gp - Pressure Reducing (Boom, Swing Priority)	232-4102	22	B-6
Valve Gp - Shuttle	185-0462	23	C-10
	259-7732	24	B-6
Valve Gp - Swing Cushion	158-9085	25	F-8
Valve Gp - Travel Counterbalance	204-2819	26	F-5, F-7
REVERSE FAN ATTACHMENT			
Motor Gp - Piston	242-6776	101	E-2
Valve Gp - Control (Reverse Fan)	234-4624	102	D-2
Valve Gp - Solenoid (Reversing Fan)	242-6880	103	E-1

Note A: Refer to Parts Manual for your specific machine.
 Note B: Available on NBD and MEY.

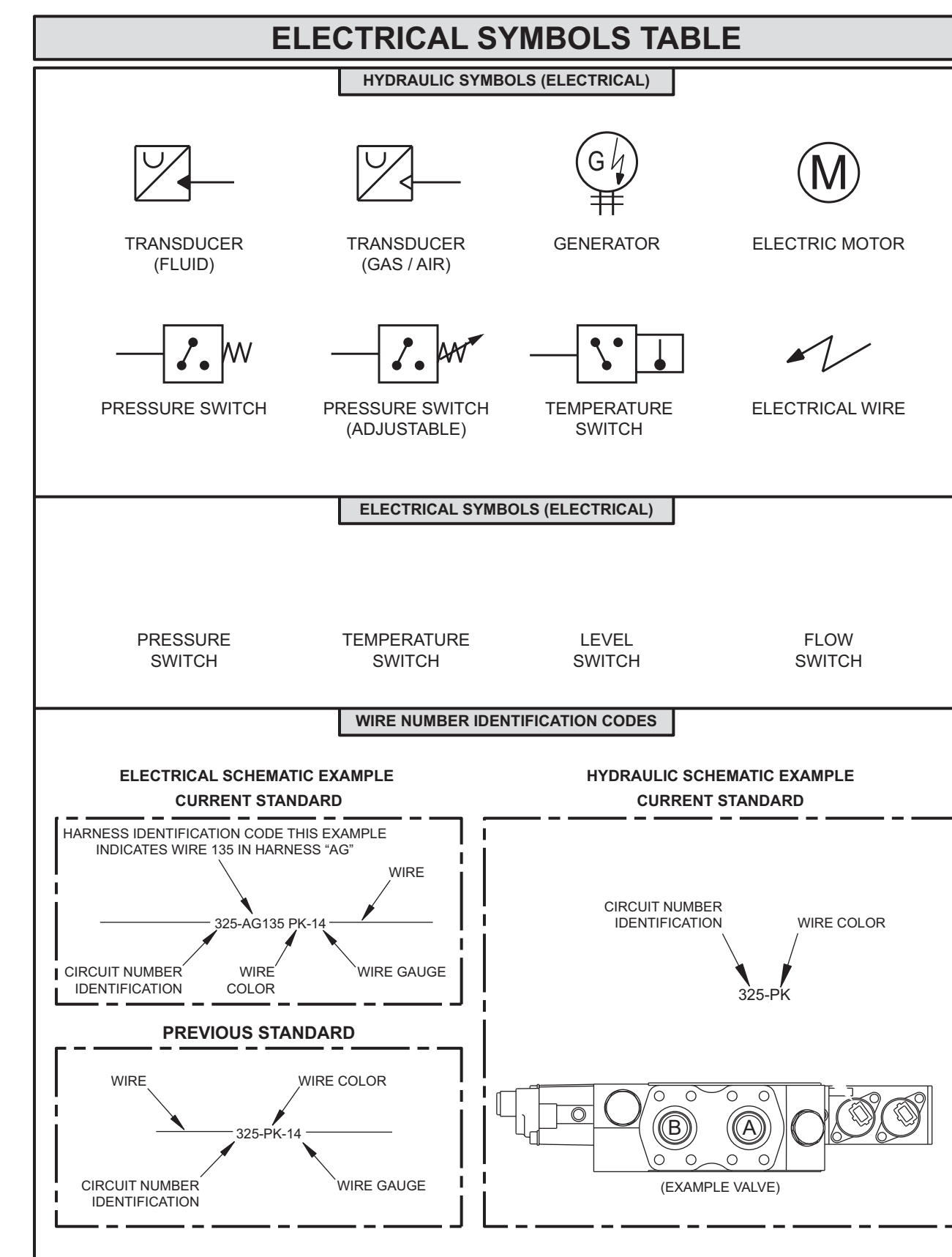
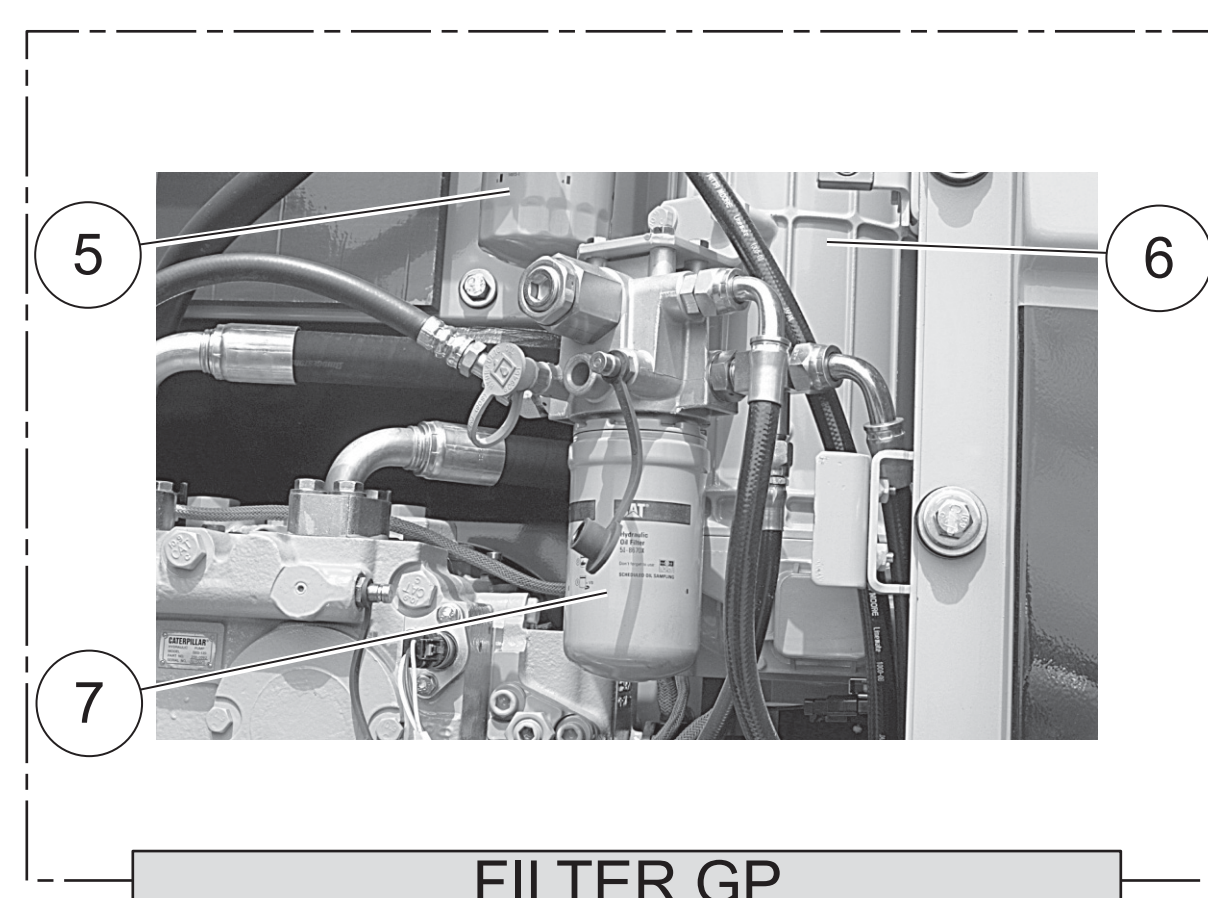
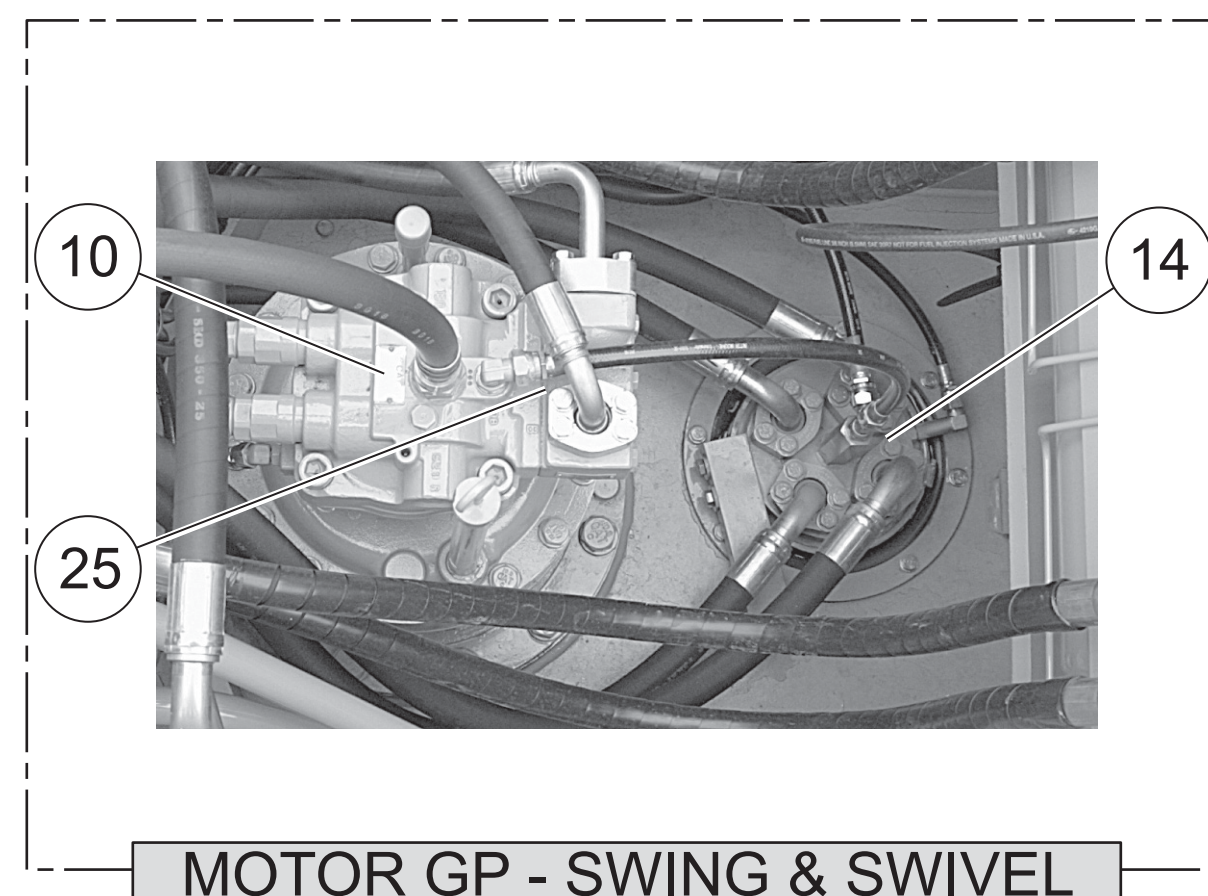
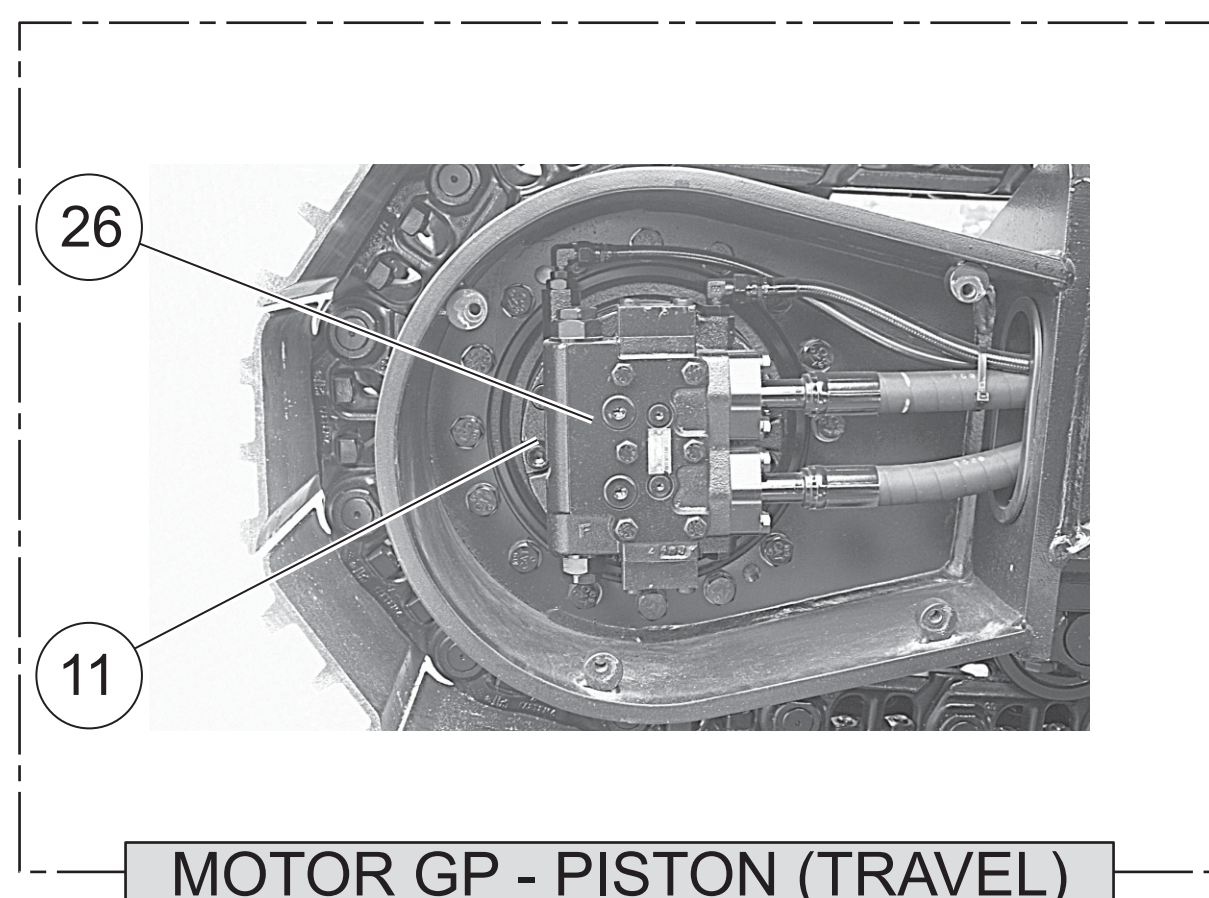
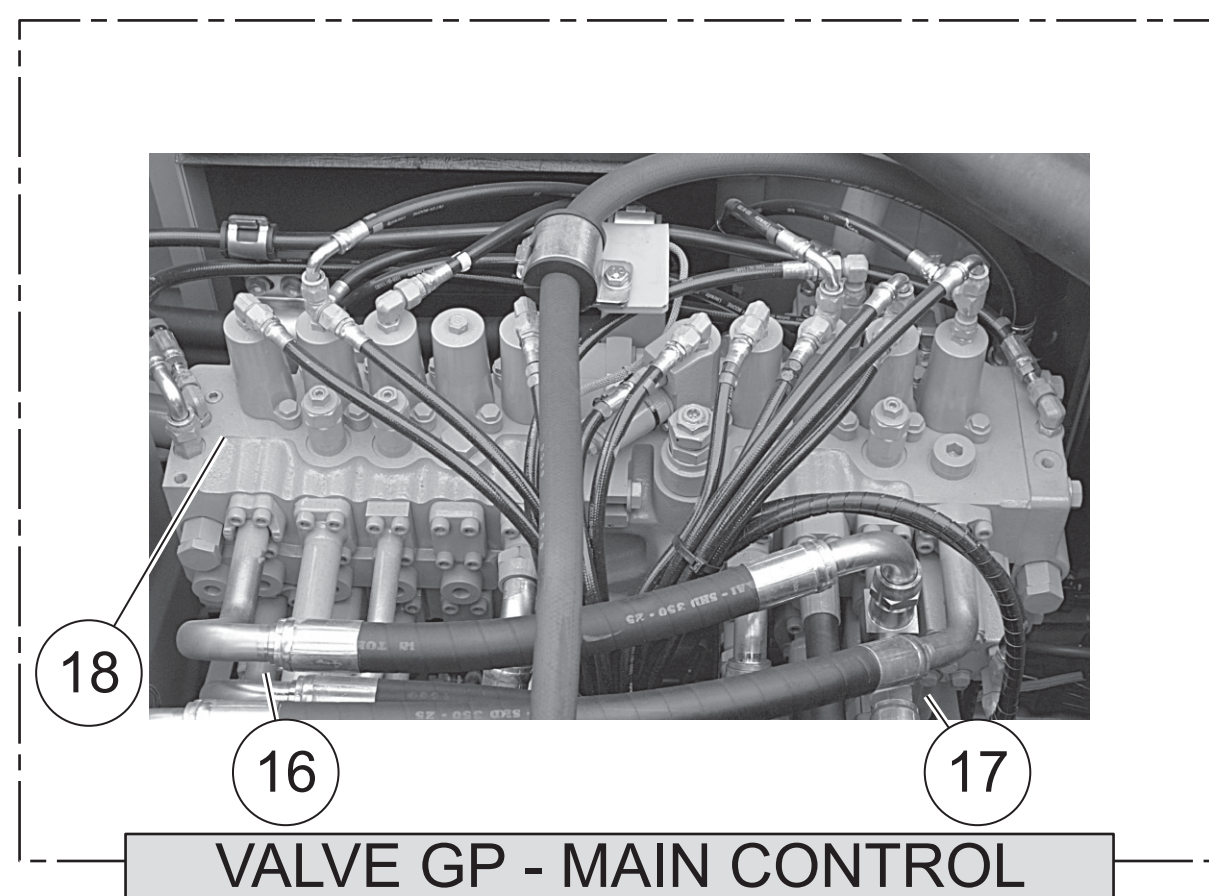
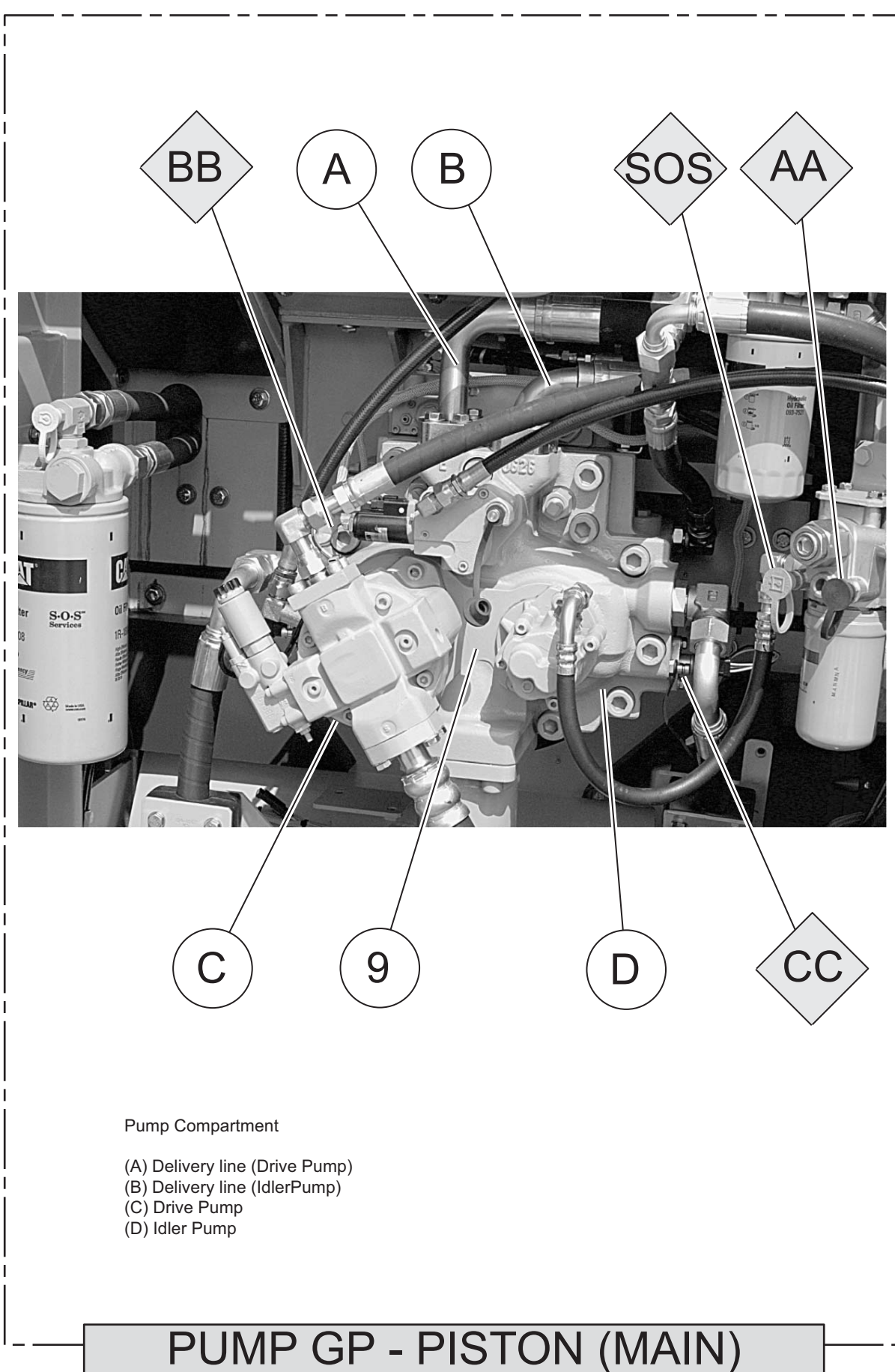
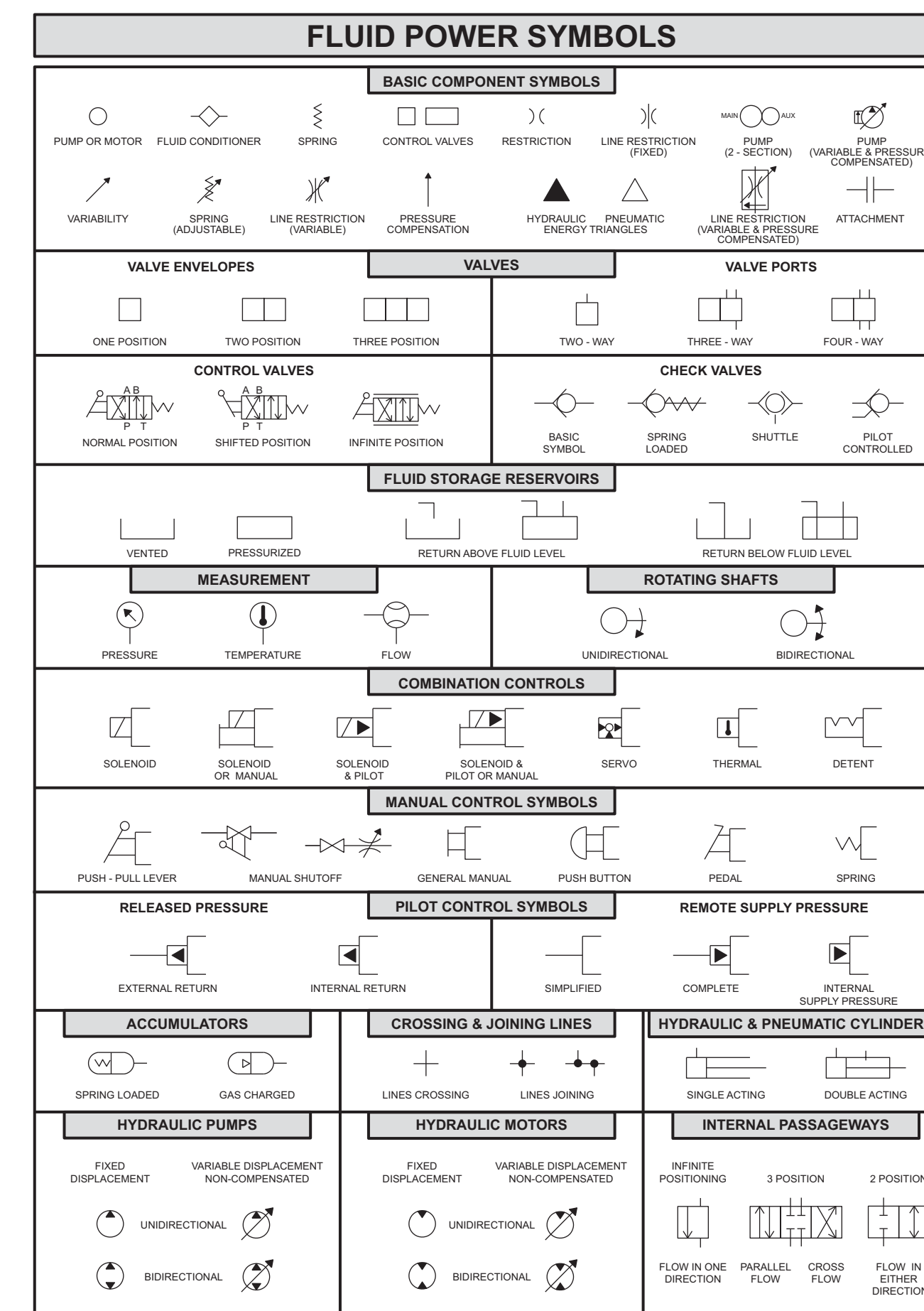
Tap Locations Pressure, Sampling, and Sensor		
Tap Number	Description	Schematic Location
AA	Pilot Filter Pressure Test Port	A-6
BB	Drive Pump Pressure Test Port	B-2
CC	Power Shift Pressure Test Port	B-2
DD	Idle Pump Pressure Test Port	A-2
SOS	Hydraulic Oil Sampling Port	A-5

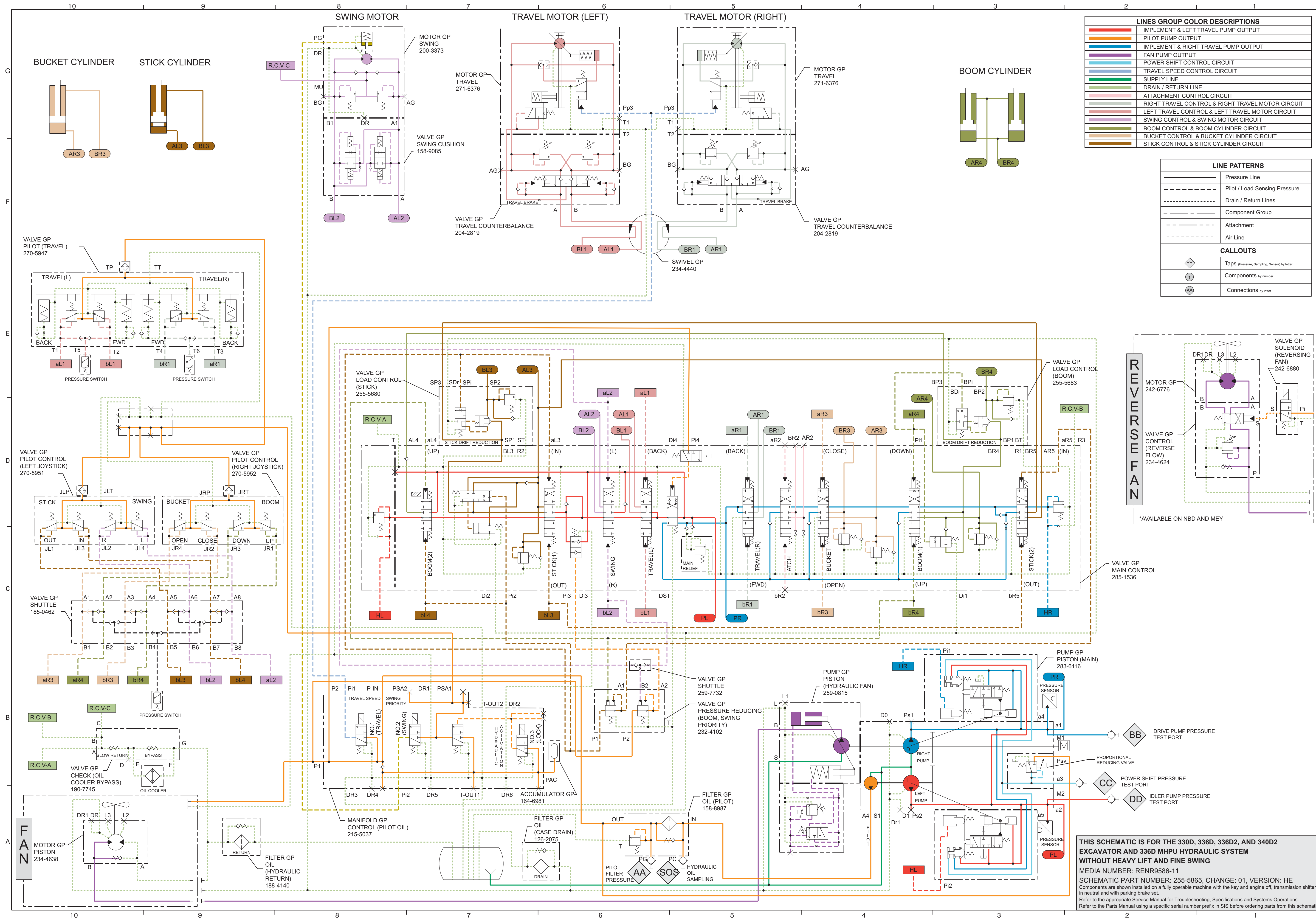
Schematic

330D, 336D, 336D2 and 340D2 Excavator and 336D MHPU Hydraulic System

- | | | | | |
|--|--|------------------------------|---|--------------------------|
| 330D:
NBD1-UP
EAH1-UP
FFK1-UP
MEY1-UP | 336D:
PRF1-UP
WRK1-UP
MPL1-UP
ZML1-UP
EFT1-UP
JBT1-UP
KKT1-UP
PGW1-UP | 336D MHPU:
J6D1-UP | 336D2:
WBC1-UP
WDC1-UP
YCF1-UP
XBH1-UP
LAM1-UP
ELR1-UP
FAR1-UP
NBN1-UP
TLY1-UP
GGH1-UP | 340D2:
HHK1-UP |
|--|--|------------------------------|---|--------------------------|

Without Heavy Lift and Fine Swing

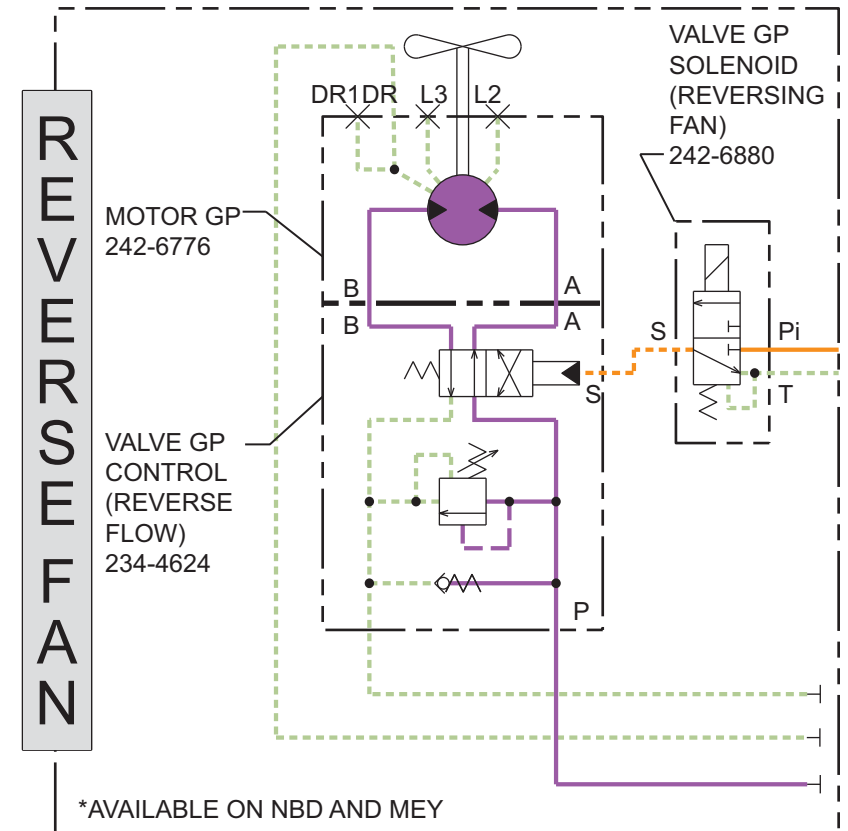




LINES GROUP COLOR DESCRIPTIONS	
[Red Line]	IMPLEMENT & LEFT TRAVEL PUMP OUTPUT
[Orange Line]	PILOT PUMP OUTPUT
[Blue Line]	IMPLEMENT & RIGHT TRAVEL PUMP OUTPUT
[Purple Line]	FAN PUMP OUTPUT
[Light Blue Line]	POWER SHIFT CONTROL CIRCUIT
[Light Purple Line]	TRAVEL SPEED CONTROL CIRCUIT
[Green Line]	SUPPLY LINE
[Light Green Line]	DRAIN / RETURN LINE
[Pink Line]	ATTACHMENT CONTROL CIRCUIT
[Light Blue Line]	RIGHT TRAVEL CONTROL & RIGHT TRAVEL MOTOR CIRCUIT
[Light Purple Line]	LEFT TRAVEL CONTROL & LEFT TRAVEL MOTOR CIRCUIT
[Light Green Line]	SWING CONTROL & SWING MOTOR CIRCUIT
[Light Blue Line]	BOOM CONTROL & BOOM CYLINDER CIRCUIT
[Light Purple Line]	BUCKET CONTROL & BUCKET CYLINDER CIRCUIT
[Light Green Line]	STICK CONTROL & STICK CYLINDER CIRCUIT

LINE PATTERNS	
[Solid Line]	Pressure Line
[Dashed Line]	Pilot / Load Sensing Pressure
[Dotted Line]	Drain / Return Lines
[Dashed Line]	Component Group
[Dashed Line]	Attachment
[Dashed Line]	Air Line

CALLOUTS	
[Symbol]	Taps (Pressure, Sampling, Sense) by letter
[Symbol]	Components by number
[Symbol]	Connections by letter



THIS SCHEMATIC IS FOR THE 330D, 336D, 336D2, AND 340D2 EXCAVATOR AND 336D MHPU HYDRAULIC SYSTEM WITHOUT HEAVY LIFT AND FINE SWING

MEDIA NUMBER: REN9586-11
 SCHEMATIC PART NUMBER: 255-5865, CHANGE: 01, VERSION: HE

Components are shown installed on a fully operable machine with the key and engine off, transmission shifter in neutral and with parking brake set.
 Refer to the appropriate Service Manual for Troubleshooting, Specifications and Systems Operations.
 Refer to the Parts Manual using a specific serial number prefix in SIS before ordering parts from this schematic.