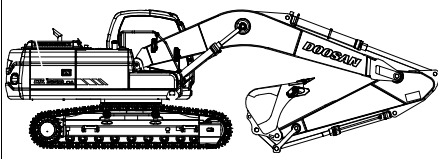
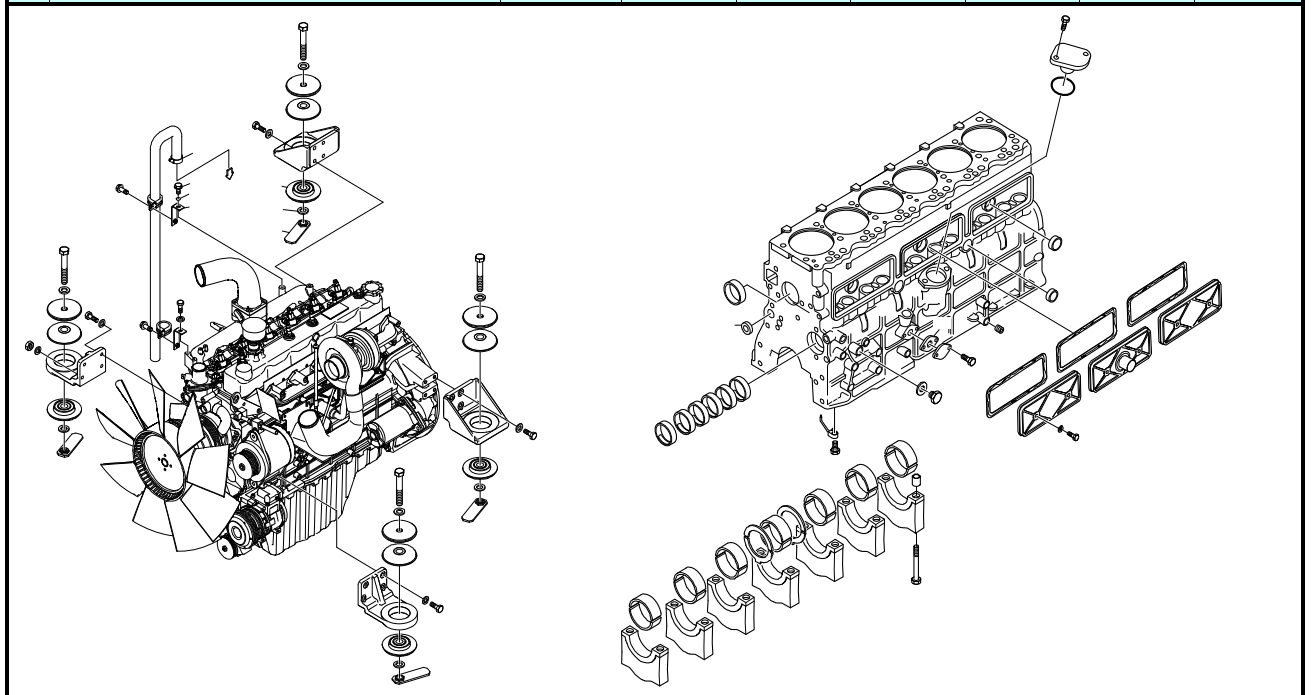
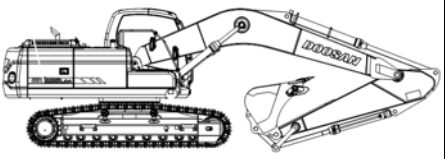


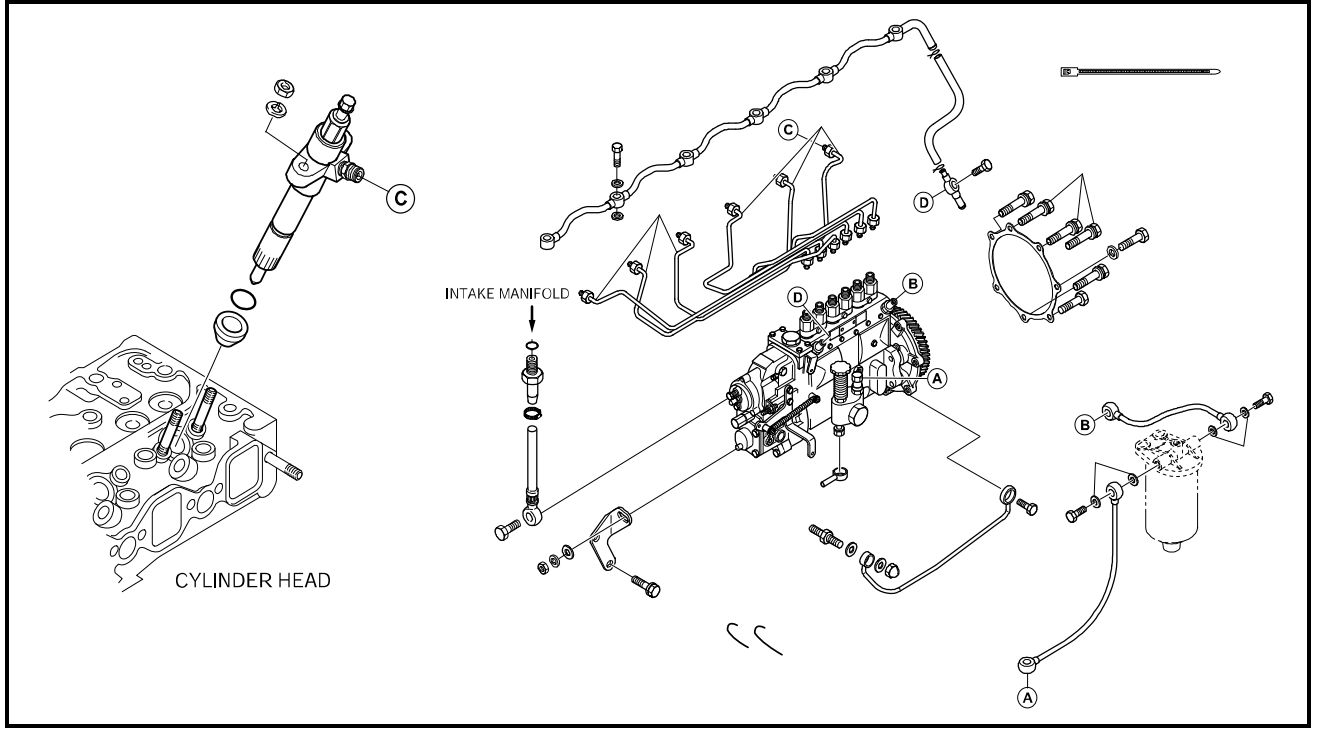
ENGINE
DX225LCA

No		Remove & Replace	Gasket Replace	Seal Replace	Minor Rebuild	Major Overhaul	Gas Charging	Repair Shortage
01	Engine	10.0				8.0		
02	Head	6.0	0.5					
03	Engine Mounting Bracket (each)	1.0						
04	Oil pan (with E/G Disassembly)	11.0	0.5					
05	In/Exhaust manifold	2.0	0.5					
06	V-Belt (each)	1.0						
07	Timing gear case	12.0	0.5					
08	Starter	1.0						
09	Radiator	6.0						
10	Oil cooler	4.0						
11	Muffler	1.5						
12	Water Pump	2.0						
13	Radiator hose upper	0.5						
14	Radiator hose lower	0.5						
15	Turbo charger	2.0						
16	Head Cover Gasket	1.0						
17	Air Cleaner Assembly	1.5						
18	Main CRS Seal (front)	3.0						
19	Main CRS Seal (rear)	9.0						
20	In/Exhaust Valves	10.0						
21	Air Cleaner Element	0.5						
22	Flywheel (with Main Pump disassembly)	8.0						
23	Thermostat	0.5						
24	Muffler Bracket	1.5						
25	Engine Control Cable	1.0						
26	Accelerator Manual Lever	1.0						
27	C/H Air Cooler Ass'y	2.0						
28	Oil Filter	0.5						
29	CCV	1.0						

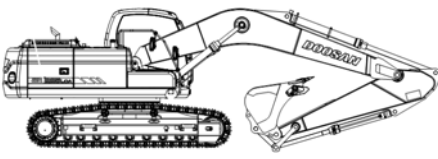


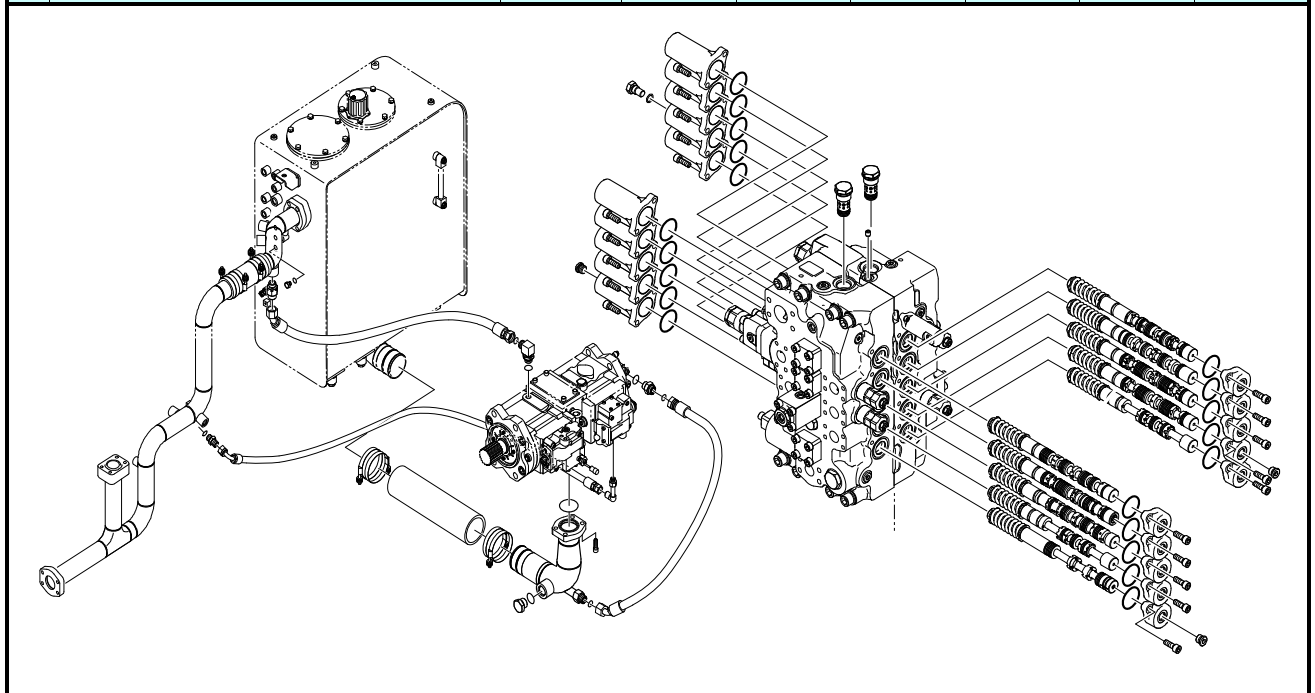
FUEL SYSTEM
DX225LCA

No		Remove & Replace	Gasket Replace	Seal Replace	Minor Rebuild	Major Overhaul	Gas Charging	Repair Shortage
01	Fuel tank	4.0						
02	Injection Pump	3.0						
03	Fuel Filter Assembly	0.5						
04	Fuel Line (each)	0.5						
05	Feed Pump	1.0						
06	Injection nozzle (each)	1.0						
07	Nozzle & Holder ass'y (each)	1.2						
08	Fuel filler pump	0.5						

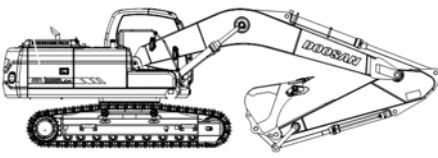


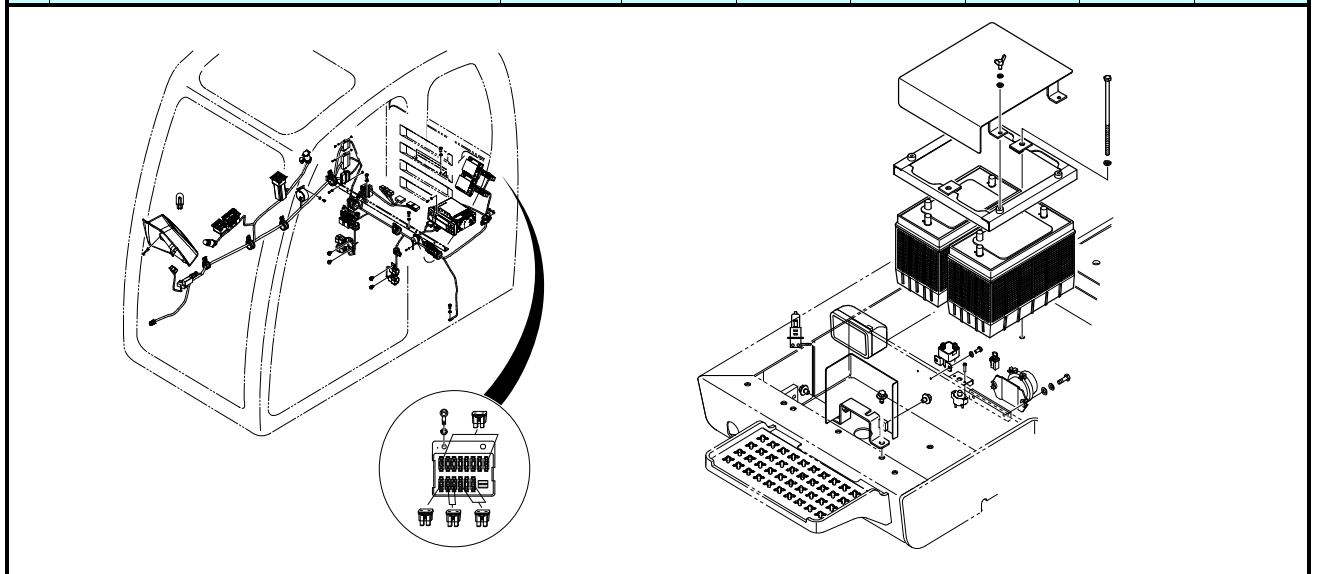
MAIN HYDRAULICS
DX225LCA

No		Remove & Replace	Gasket Replace	Seal Replace	Minor Rebuild	Major Overhaul	Gas Charging	Repair Shortage
01	Hydraulic Tank	5.0						
02	Main Pump	5.0				2.0		
03	Pilot Gear Pump	1.0						
04	Coupling (with Main Pump Disassembly)	6.0						
05	Control Valve	10.0						
06	Control Valve Cap	0.5						
07	Control Valve Spool (Includes Cap)	0.7						
08	Relief Valve (each)	0.5						
09	Swing Motor	3.0						
10	Swing Reduction Gear	5.0						
11	Pinion Gear (with Swing Device Disassembly)	6.0						
12	Travel Device(each, with Track Disassembly)	5.5						
13	Center Joint	5.0		4.0				
14	Boom Cylinder (each)	3.0		3.0				
15	Arm Cylinder	3.0		3.0				
16	Bucket Cylinder	3.0		3.0				
17	Dozer Cylinder (each)	N/A						
18	Suction Pipe	1.5						
19	Suction Hose	1.5						
20	High Pressure Pipe (each)	1.5						
21	High Pressure Hose (each)	1.5						
22	Low Pressure Hose (each)	0.5						
23	Hydraulic System Flushing	6.0						
24	Return Filter	0.5						
25	Suction Filter (suction)	0.2						

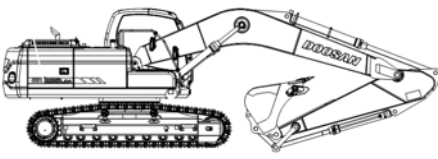


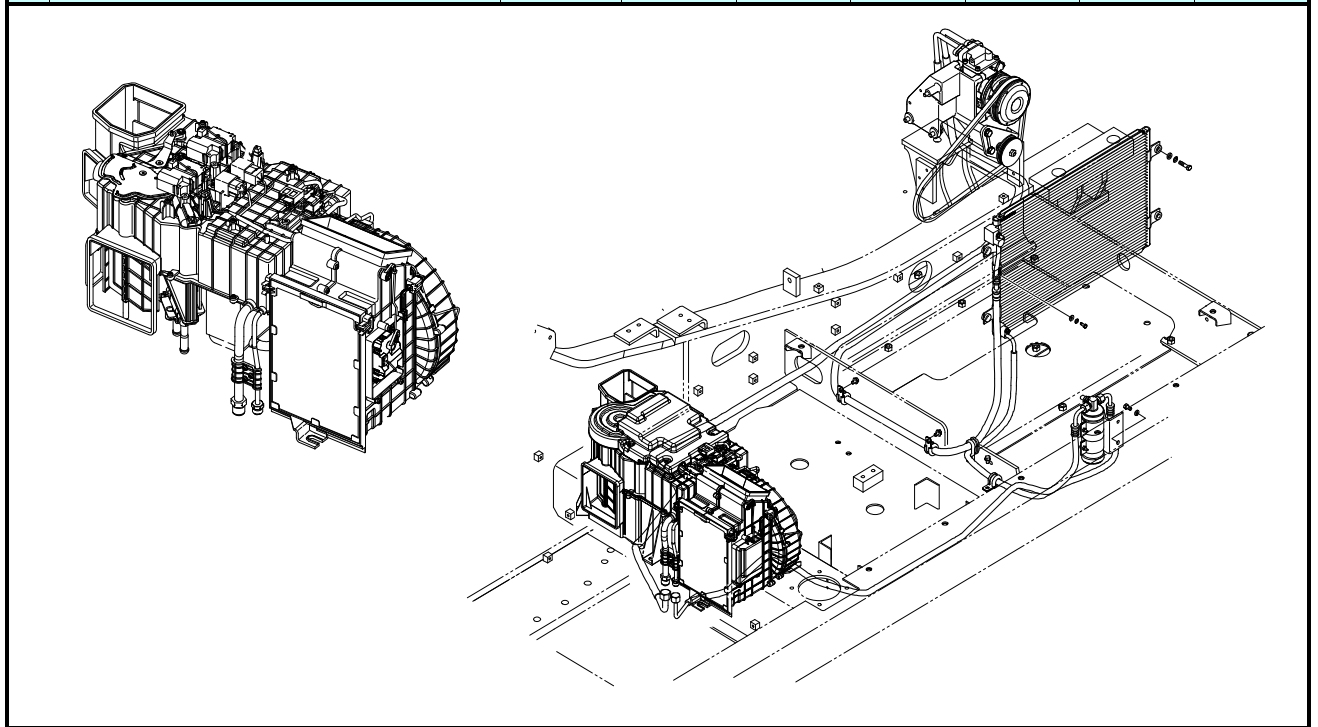
ELECTRIC
DX225LCA

No		Remove & Replace	Gasket Replace	Seal Replace	Minor Rebuild	Major Overhaul	Gas Charging	Repair Shortage
01	EPOS Controller	1.0						
02	Stand Harness-Left Hand	2.0						0.5
03	Stand Harness- Right Hand	2.0						0.5
04	LCD Monitor	1.0						
05	Relay (each)	0.5						
06	Control Knob (each)	0.5						
07	Batteries	0.5						
08	Wiper Motor	2.0						
09	Hyd. Oil level switch	0.5						
10	Radio	0.5						
11	Alternator	2.0						
12	Main Wiring Harness	16.0						1.5
13	Hour Meter	0.5						
14	Switch (each)	0.5						
15	Preheat Controller	0.5						
16	Wiper timer	0.5						
17	DC Converter	0.5						
18	Pilot Buzzer	0.5						
19	Fusible link	0.1						
20	Lamp (each)	0.3						
21	Bulb (each)	0.1						
22	Horn (each)	0.5						
23	Control Unit	1.0						
24	Key Switch	1.0						
25	Fuel Sensor	1.0						
26	Oil Pressure/Temp	0.5						
27	Water temp sensor	0.5						
28	Engine Speed Sensor	1.0						
29	Engine Stop Motor	1.0						
30	Engine Control Motor	1.0						
31	Engine Throttle Controller	1.0						
32	Ambient Sensor	0.5						

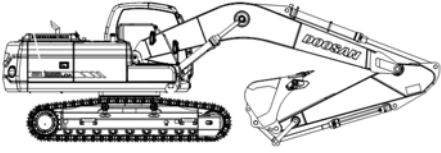


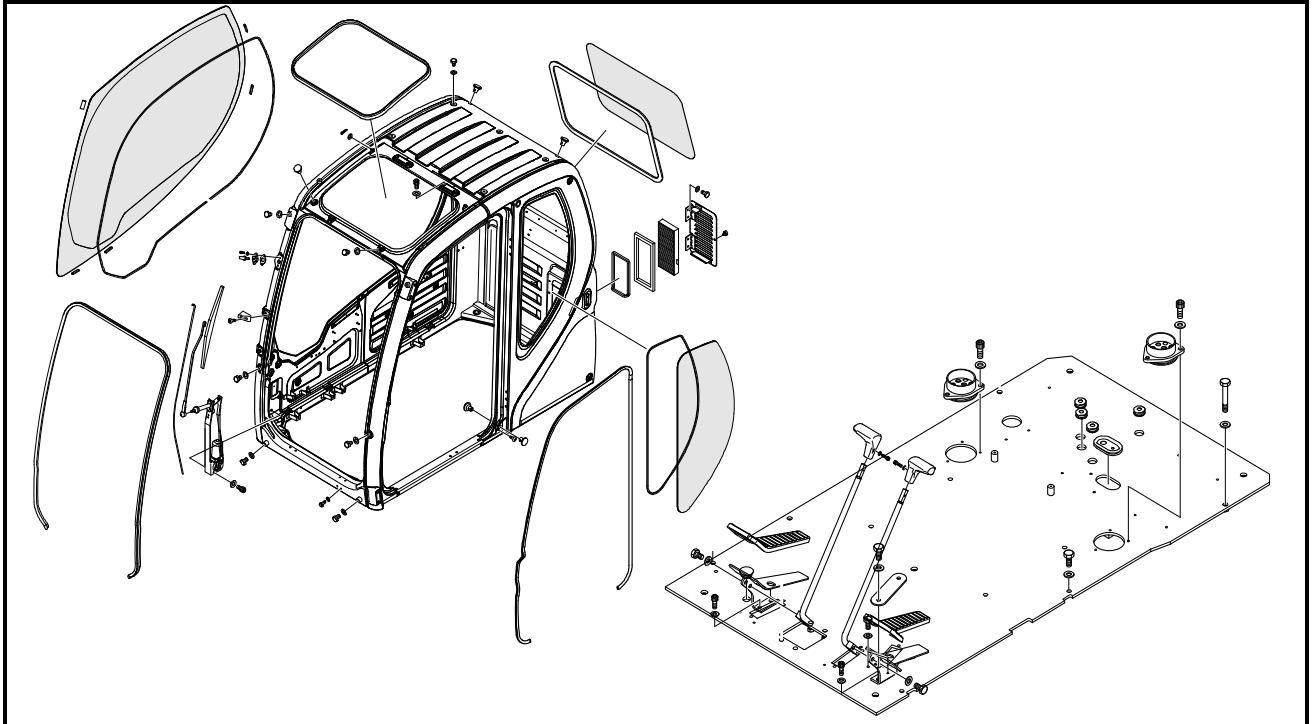
AIR CONDITIONER
DX225LCA

No		Remove & Replace	Gasket Replace	Seal Replace	Minor Rebuild	Major Overhaul	Gas Charging	Repair Shortage
01	Aircon Compressor	2.0						
02	Condenser	2.0						
03	Aircon unit	5.0						
04	Aircon Controller	0.5						
05	Drier Receiver	0.5						
06	Air Duct (each)	2.0						
07	Hose	3.0						
08	Heater Hose (each)	1.5						
09	Aircon gas Charging						1.0	
10	Idle pully	1.0						

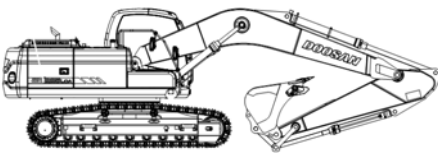


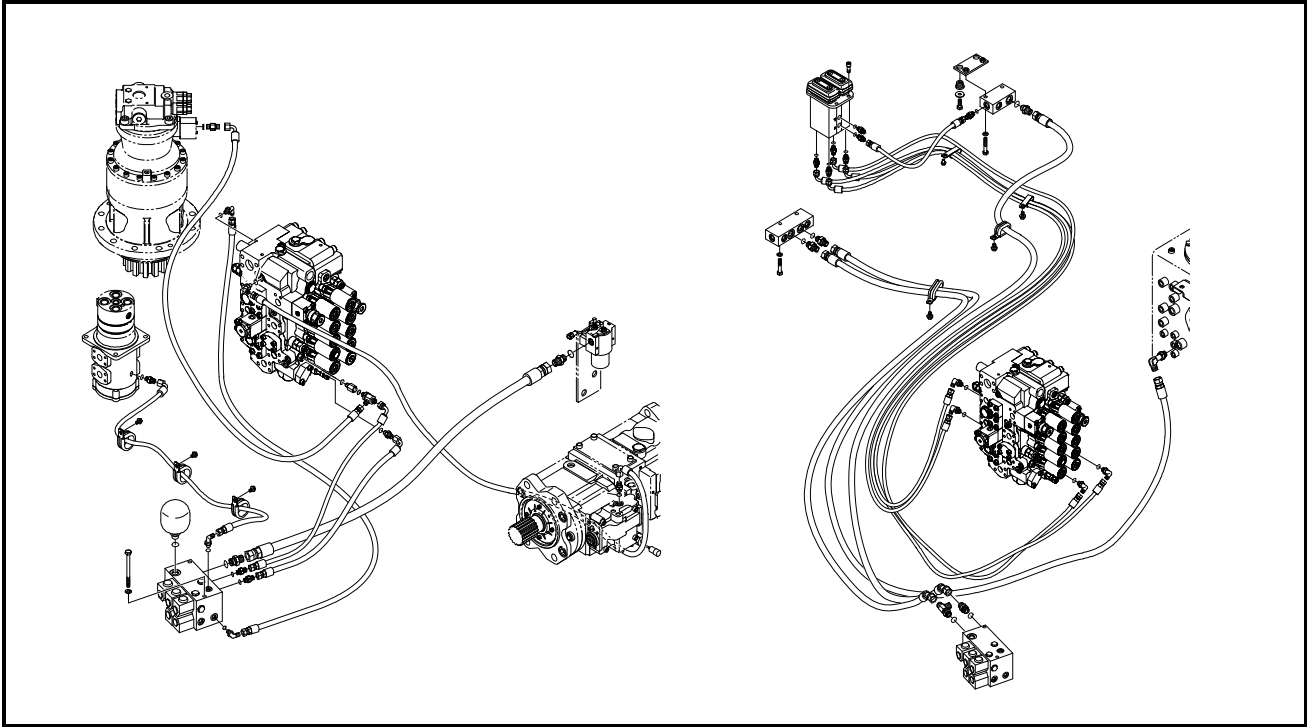
CABIN
DX225LCA

No		Remove & Replace	Gasket Replace	Seal Replace	Minor Rebuild	Major Overhaul	Gas Charging	Repair Shortage
01	Cabin Assembly	8.0						
02	Cabin mounting rubber (each)	1.5						
03	Door	1.0						
04	Door Latch	1.0						
05	Door handle	0.5						
06	Windows (each)	2.0						
07	Seat Assembly	2.0						
08	Control Stand(Each)	3.0						
09	Instrument Panel	1.0						
10	Travel Lever (each)	0.2						
11	Mirror	0.2						
12	Gas Spring	0.2						
13	Slide Door	2.0						
14	Pedal (Traveling) (Each)	0.5						
15	Door Handle Lock	0.5						

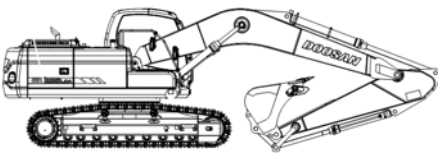


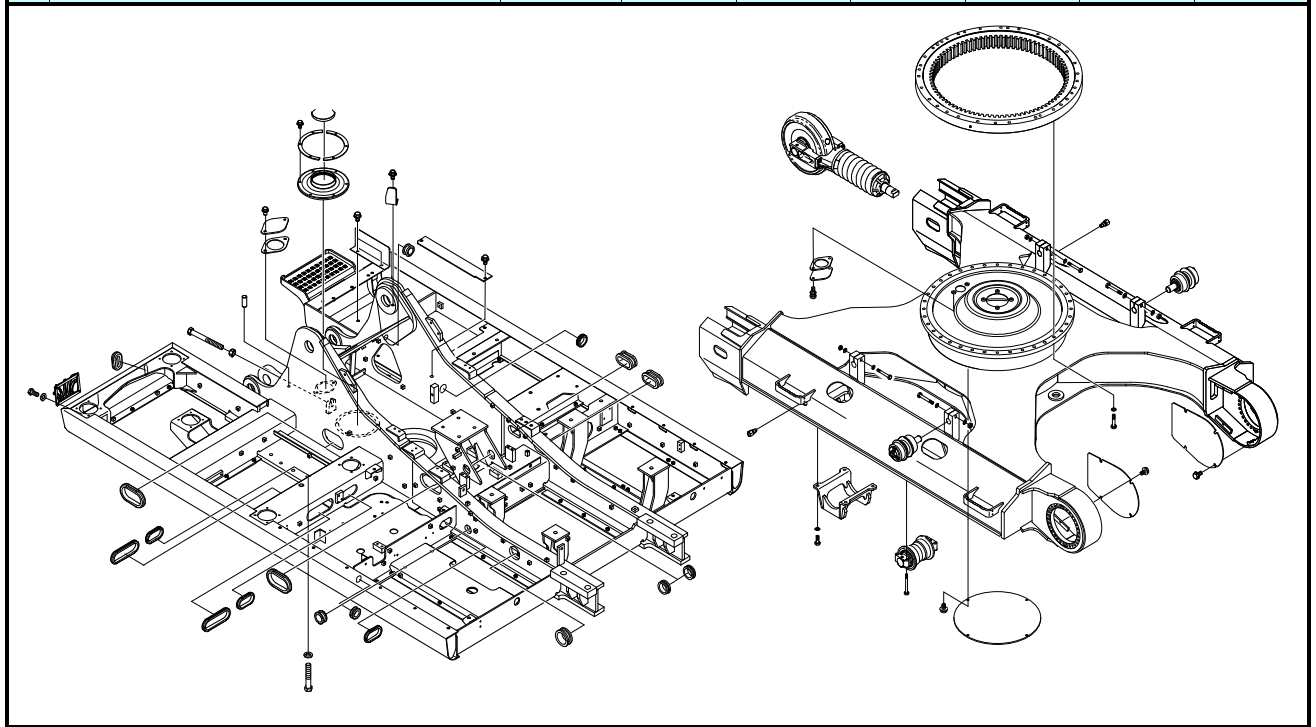
PILOT PIPING DX225LCA

No		Remove & Replace	Gasket Replace	Seal Replace	Minor Rebuild	Major Overhaul	Gas Charging	Repair Shortage
01	Remote Control Valve (each)	1.5						
02	Shuttle Valve	1.0						
03	Accumulator	0.5						
04	Pilot Hose (each)	1.0						
05	Pilot Filter	0.5						
06	Solenoid Valve Block	2.0						
07	Pedal Valve	2.0						
08	Solenoid Valve (each)	0.5						

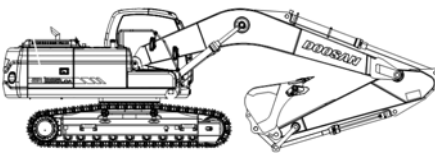


MAIN FRAME
DX225LCA

No		Remove & Replace	Gasket Replace	Seal Replace	Minor Rebuild	Major Overhaul	Gas Charging	Repair Shortage
01	Counter Weight	3.0						
02	Counter Weight Bolt (each)	0.5						
03	Swing Bearing	16.0						
04	Track Link Ass'y	2.0						
05	Track shoe (each)	0.5						
06	Idler (each)	2.2						
07	Track Spring	2.5						
08	Upper Roller (each)	0.5						
09	Lower Roller (each)	0.5						
10	Sprocket	2.5						
11	Pin & Bushing (per link)	1.0						
12	Track Adjusting Cylinder	3.0		1.0				
13	Track Frame	48.0						
14	Main Frame	64.0						
15	Steps (toolbox) (each)	0.5						



**FRONT ATTACHMENTS
DX225LCA**

No		Remove & Replace	Gasket Replace	Seal Replace	Minor Rebuild	Major Overhaul	Gas Charging	Repair Shortage
01	Boom	10.0						
02	Arm	6.0						
03	Bucket	1.0						
04	Link	1.0						
05	H Link	1.0						
06	Boom Foot Pin	2.0						
07	Bucket Pin (Each)	0.5						
08	Bushing (Each)	2.0						
09	Bushing (Each) on Boom Foot	2.0						
10	Dust Seal on Bucket	1.2						
11	Dust Seal on Arm	1.0						
12	Boom Cylinder Foot Pin	1.0						
13	Boom Cylinder Eye Pin	1.0						
14	Arm Cylinder Pin	1.0						
15	Blade Assembly	N/A						
16	Blade Link	N/A						

