

# BODAS

## Temperature Sensor for Air TSA

**RE 95181/07.08** 1/2  
Replaces: 07.06

### Data sheet



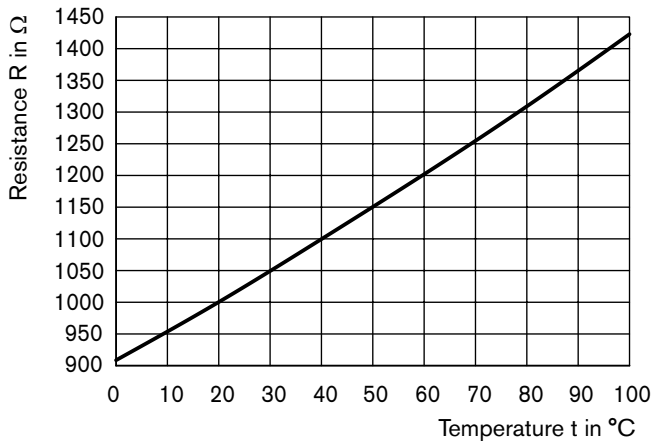
### Operation

The sensor element consists of a PTC nickel-thin-film resistor, vacuummetalized onto a ceramic base. This component is built into a plastic housing to protect it from damage. The time constant and the lag time of the sensor are maintained at minimum levels by the lattice structure and by designing the input and output for good flow characteristics.

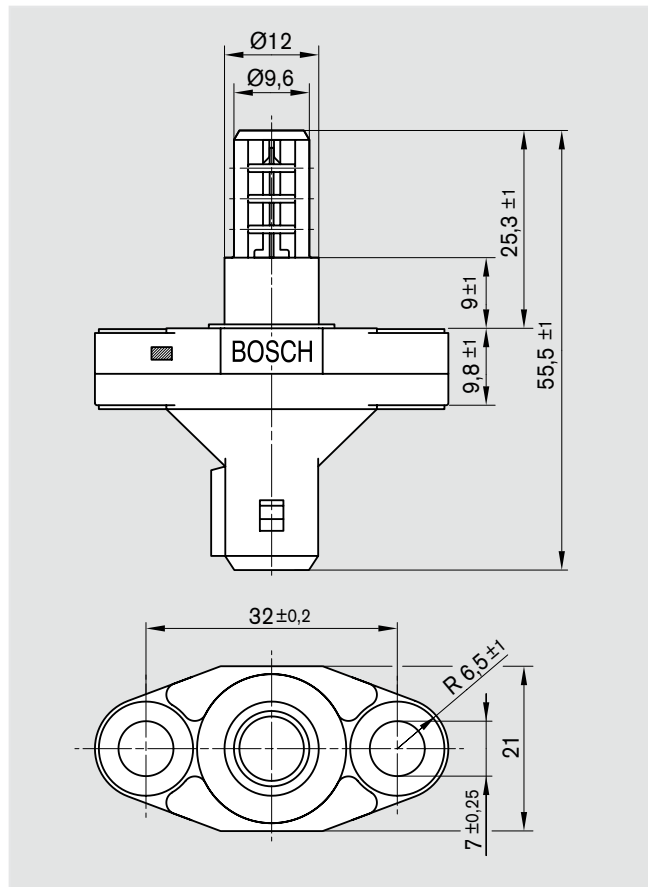
### Application

Monitoring temperature of ambient air and of charge air in motor vehicles.

## Characteristics



## Dimensions



## Technical Data

Measurement range	-40 °C ... 130 °C
Resistance at 20 °C	1000 Ω
Tolerance at 20 °C	± 0,5 K corresp. to ± 0,3 % of R <sub>20</sub>
Tolerance at 100 °C	± 1,1 K corresp. to ± 0,5 % of R <sub>100</sub>
Max. current allowed	5 mA
Time constant (in standing water)	→ 0
Degree of protection	IP 64 A with plug connected
Plug connection	Jet plug 2-pin
Mounting	2 x M6

### Order number:

Sensor (without accessories) \_\_\_\_\_ 0 538 009 203

Accessory (connector set) \_\_\_\_\_ 1 834 484 094

### Connector set consisting of:

1x connector housing, 2x contacts, 1x protective cap

Connector set is not included in the supply!

Bosch Rexroth AG  
 Hydraulics  
 Mobile Electronics  
 Robert-Bosch-Straße 2  
 71701 Schwieberdingen, Germany  
 Phone +49 (0) 711 811 -4 30 80  
 Fax +49 (0) 711 811 -3 36 85  
 info.brm-me@boschrexroth.de  
 www.boschrexroth.com/mobile-electronics

© This document, as well as the data, specifications and other information set forth in it, are the exclusive property of Bosch Rexroth AG. It may not be reproduced or given to third parties without its consent.

The data specified above only serve to describe the product. No statements concerning a certain condition or suitability for a certain application can be derived from our information. The information given does not release the user from the obligation of own judgment and verification. It must be remembered that our products are subject to a natural process of wear and aging.

Subject to change.