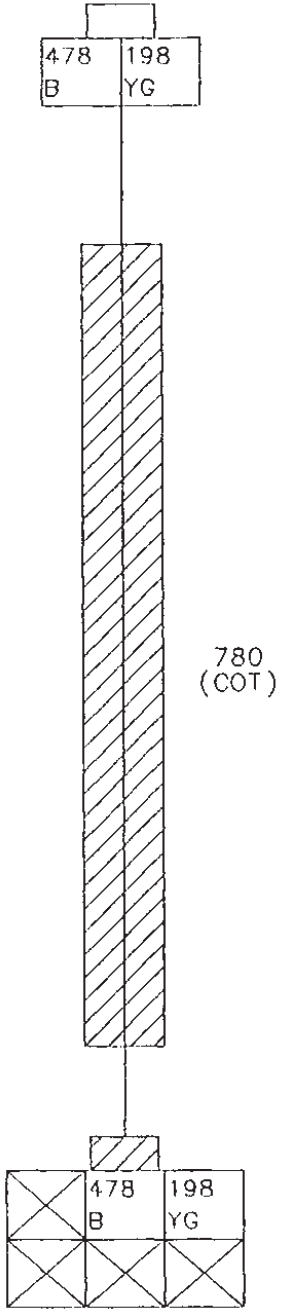


ZW220/250 LIFT ARM PROXIMITY SWITCH HARNESS(EU STANDARD,GENERAL STANDARD) ZW310 LIFT ARM PROXIMITY SWITCH HARNESS

No.	SIZE	COLOR	TYPE	FROM	TO
198	0.75	Y-G	AVSS	FRAME	BOOM KICK OUT
478	0.75	B	AVSS	BOOM KICK OUT	FRAME

BOOM KICK OUT
 YAZAKI)7123-1424-40

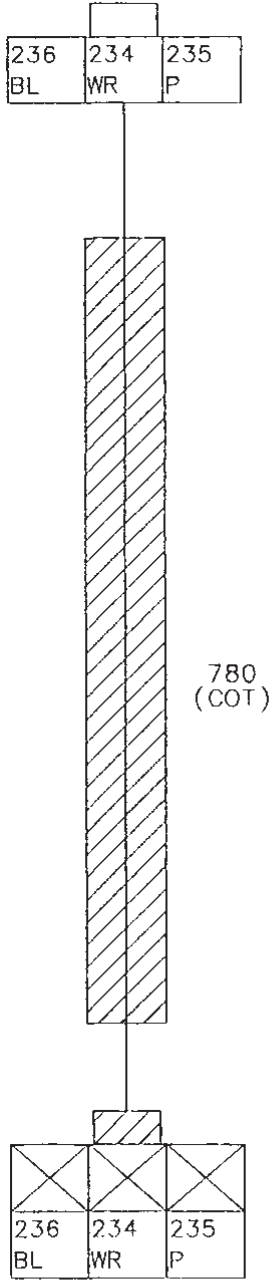


FRAME
 YAZAKI)7222-7760-40

ZW220/250 LIFT ARM ANGLE SENSOR HARNESS (EU STANDARD,GENERAL STANDARD)(OPTIONAL) ZW310 LIFT ARM ANGLE SENSOR HARNESS(OPTIONAL)

No.	SIZE	COLOR	TYPE	FROM	TO
234	0.75	W-R	AVSS	ANGLE SENSOR(SIG)	FRAME
235	0.75	P	AVSS	FRAME	ANGLE SENSOR(+5V)
236	0.75	B-L	AVSS	ANGLE SENSOR(GND)	FRAME

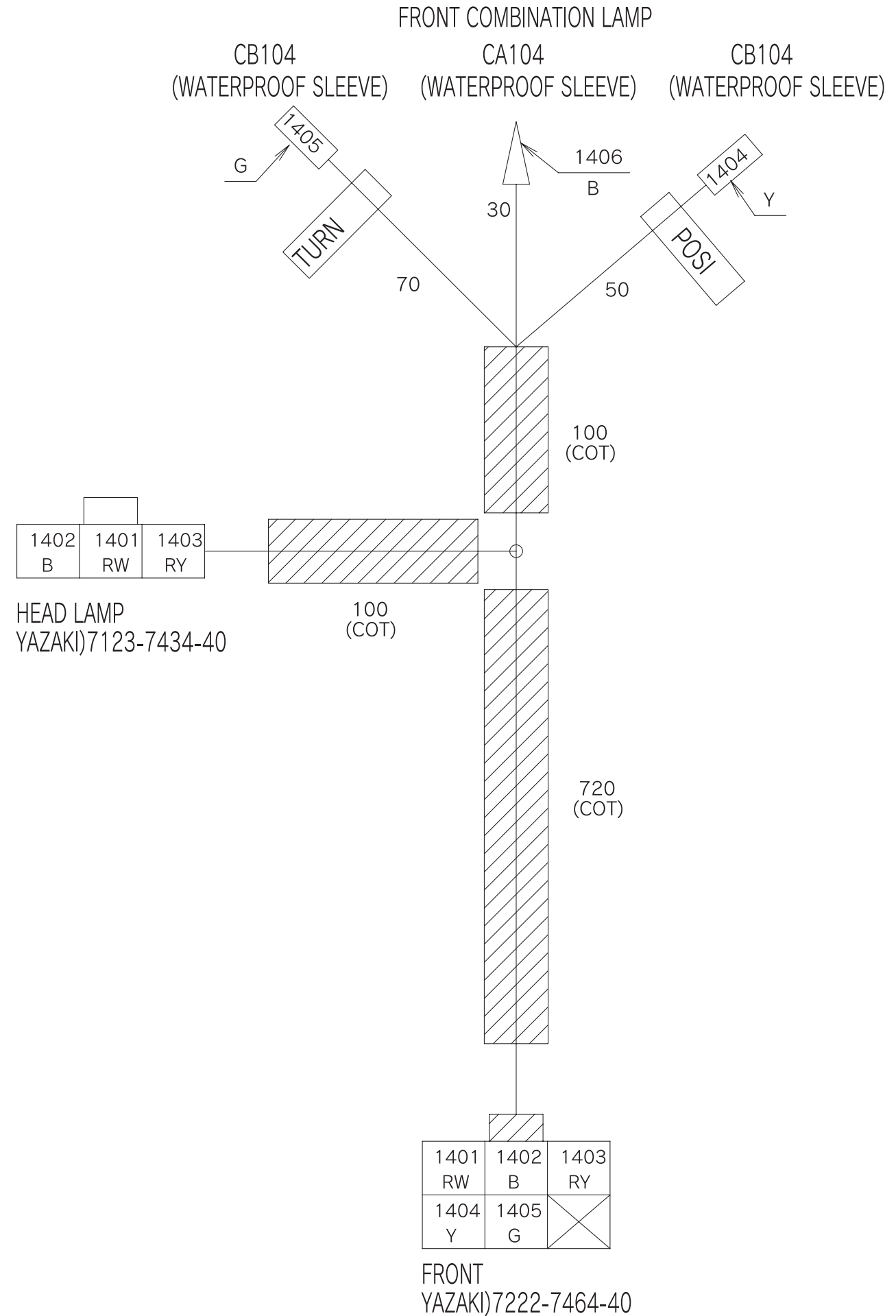
ANGLE SENSOR
 YAZAKI)7123-7730-40



FRAME
 YAZAKI)7222-7760-40

ZW220/250 FRONT LIGHT HARNESS(EU STANDARD,GENERAL STANDARD) ZW310 FRONT LIGHT HARNESS

No.	SIZE	COLOR	TYPE	FROM	TO
1401	0.75	R-W	AVSS	FRONT	HEAD LAMP(HI)
1402	1.25	B	AVSS	HEAD LAMP(GND)	FRONT
1403	0.75	R-Y	AVSS	FRONT	HEAD LAMP(LO)
1404	0.75	Y	AVSS	FRONT	F_COMBINATION(POSI)
1405	0.75	G	AVSS	FRONT	F_COMBINATION(TURN)
1406	0.75	B	AVSS	F_COMBINATION(EARTH)	1402

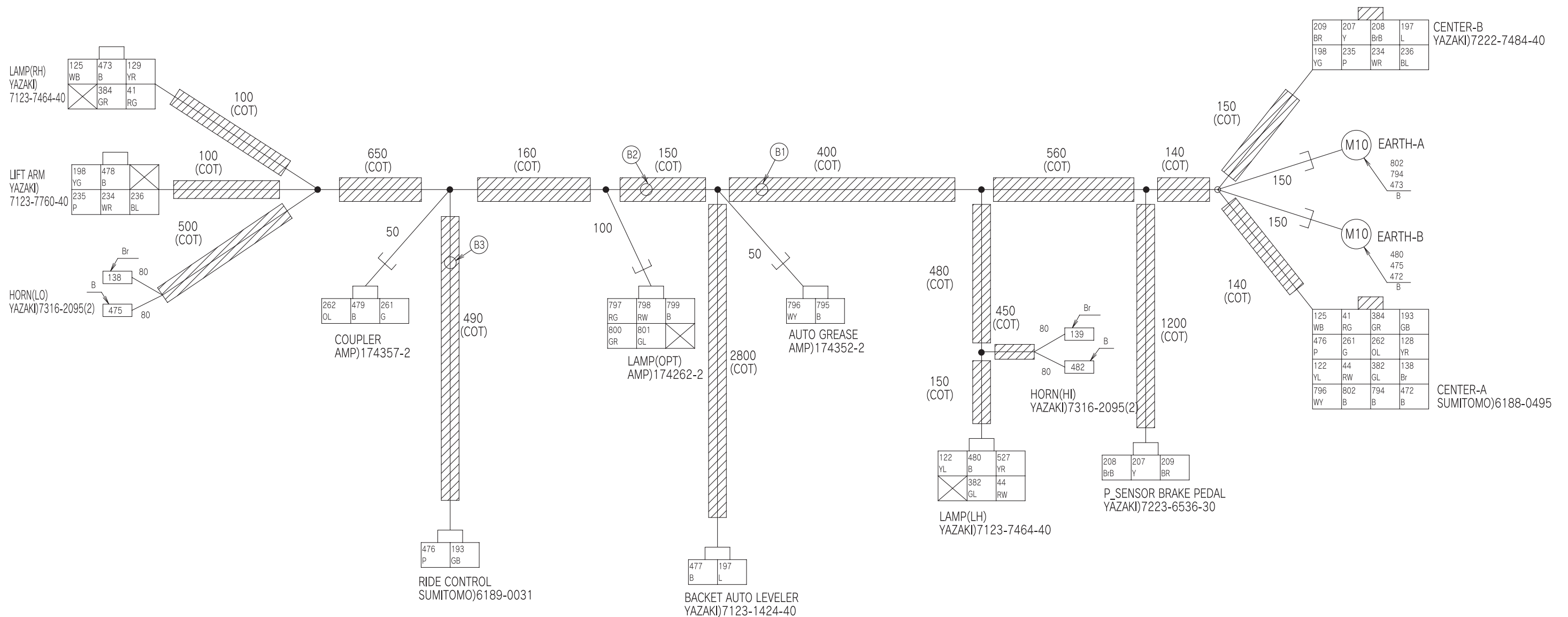


ZW220/250 FRONT HARNESS(EU STANDARD,GENERAL STANDARD)

ZW310 FRONT HARNESS

No.	SIZE	COLOR	TYPE	FROM	TO
41	0.75	R-G	AVSS	CENTER-A	LAMP(RH)(POSI)
44	0.75	R-W	AVSS	CENTER-A	LAMP(LH)(POSI)
122	0.75	Y-L	AVSS	CENTER-A	LAMP(LH)(LO)
125	0.75	W-B	AVSS	CENTER-A	LAMP(RH)(LO)
128	1.25	Y-R	AVSS	CENTER-A	129,527
129	0.75	Y-R	AVSS	128	LAMP(RH)(HI)
138	1.25	Br	AVSS	CENTER-A	HORN(LO)
139	0.75	Br	AVSS	138	HORN(HI)
193	0.75	G-B	AVSS	CENTER-A	RIDE CONTROL
197	1.25	L	AVSf	CENTER-B	BACKET AUTO LEVELER
198	0.75	Y-G	AVSS	CENTER-B	LIFT ARM(BKO)
207	0.75	Y	AVSS	P_SENSOR PEDAL(SIG)	CENTER-B
208	0.75	Br-B	AVSS	CENTER-B	P_SENSOR PEDAL(+)
209	0.75	B-R	AVSS	P_SENSOR PEDAL(GND)	CENTER-B
234	0.75	W-R	AVSS	LIFT ARM(SENSOR SIG)	CENTER-B
235	0.75	P	AVSS	CENTER-B	LIFT ARM(SENSOR +5V)
236	0.75	B-L	AVSS	LIFT ARM(SENSOR GND)	CENTER-B
261	0.75	G	AVSS	CENTER-A	COUPLER(PUSH)
262	0.75	O-L	AVSS	CENTER-A	COUPLER(PULL)
382	0.75	G-L	AVSS	CENTER-A	LAMP(LH)(TURN)
384	0.75	G-R	AVSS	CENTER-A	LAMP(RH)(TURN)
472	1.25	B	AVSS	EARTH-B	CENTER-A

No.	SIZE	COLOR	TYPE	FROM	TO
473	1.25	B	AVSS	LAMP(RH)	EARTH-A
475	1.25	B	AVSS	HORN(LO)	EARTH-B
476	0.75	P	AVSS	RIDE CONTROL	CENTER-A
477	1.25	B	AVSf	BACKET AUTO LEVELER	473
478	0.75	B	AVSS	LIFT ARM(BKO)	473
479	0.75	B	AVSS	COUPLER	473
480	1.25	B	AVSS	LAMP(LH)	EARTH-B
482	0.75	B	AVSS	HORN(HI)	475
527	0.75	Y-R	AVSS	128	LAMP(LH)(HI)
794	1.25	B	AVSS	EARTH-A	CENTER-A
795	1.25	B	AVSS	AUTO GREASE	475
796	1.25	W-Y	AVSS	CENTER-A	AUTO GREASE
797	0.75	R-G	AVSS	41	LAMP(OPT)(POSI RH)
798	0.75	R-W	AVSS	44	LAMP(OPT)(POSI LH)
799	0.75	B	AVSS	LAMP(OPT)	480
800	0.75	G-R	AVSS	384	LAMP(OPT)(TURN RH)
801	0.75	G-L	AVSS	382	LAMP(OPT)(TURN LH)
802	1.25	B	AVSS	EARTH-A	CENTER-A



ZW220/250 CENTER HARNESS(EU STANDARD,GENERAL STANDARD) ZW310 CENTER HARNESS

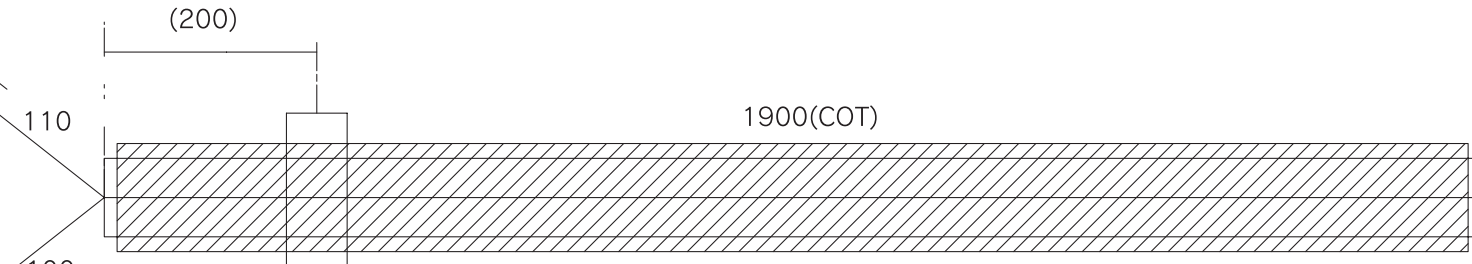
No.	SIZE	COLOR	TYPE	FROM	TO
41	1.25	O	---	FRONT-A	REAR_CONSOLE-A
44	1.25	Gy	---	FRONT-A	REAR_CONSOLE-A
122	1.25	P	---	FRONT-A	REAR_CONSOLE-A
125	1.25	Sb	---	FRONT-A	REAR_CONSOLE-A
128	1.25	W	---	FRONT-A	REAR_CONSOLE-A
138	1.25	Br	---	FRONT-A	REAR_CONSOLE-A
193	1.25	Sb	---	FRONT-A	REAR_CONSOLE-A
197	1.25	W	---	FRONT-B	REAR_CONSOLE-B
198	1.25	P	---	FRONT-B	REAR_CONSOLE-B
207	1.25	G	---	FRONT-B	REAR_CONSOLE-B
208	1.25	R	---	FRONT-B	REAR_CONSOLE-B
209	1.25	Y	---	FRONT-B	REAR_CONSOLE-B
234	1.25	L	---	FRONT-B	REAR_CONSOLE-B
235	1.25	Gy	---	FRONT-B	REAR_CONSOLE-B
236	1.25	Br	---	FRONT-B	REAR_CONSOLE-B
261	1.25	G	---	FRONT-A	REAR_CONSOLE-A
262	1.25	R	---	FRONT-A	REAR_CONSOLE-A
382	1.25	L	---	FRONT-A	REAR_CONSOLE-A
384	1.25	Lg	---	FRONT-A	REAR_CONSOLE-A
472	1.25	B	---	FRONT-A	EARTH-A
476	1.25	Y	---	FRONT-A	REAR_CONSOLE-A
794	1.25	B	---	FRONT-A	EARTH-A
796	1.25	O	---	FRONT-A	REAR_CONSOLE-A
802	1.25	Lg	---	FRONT-A	EARTH-A
803	1.25	B	AVSS	REAR_CONSOLE-A	EARTH-B
804	1.25	B	AVSS	REAR_CONSOLE-A	EARTH-B
805	1.25	B	AVSS	REAR_CONSOLE-A	EARTH-B

FRONT-B
YAZAKI)7123-7484-40

197	208	207	209
W	R	G	Y
236	234	235	198
Br	L	Gy	P

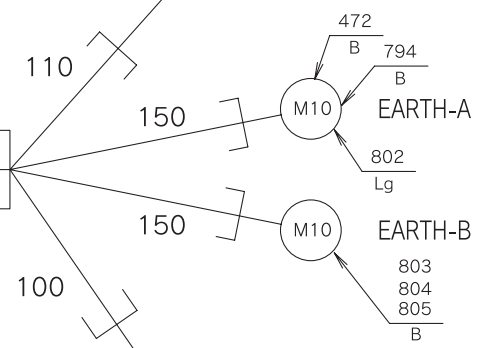
193	384	41	125
Sb	Lg	O	Sb
128	262	261	476
W	R	G	Y
138	382	44	122
Br	L	Gy	P
472	794	802	796
B	B	Lg	O

FRONT-A
SUMITOMO)6189-0715



REAR_CONSOLE-B
YAZAKI)7222-7484-40

209	207	208	197
Y	G	R	W
198	235	234	236
P	Gy	L	Br



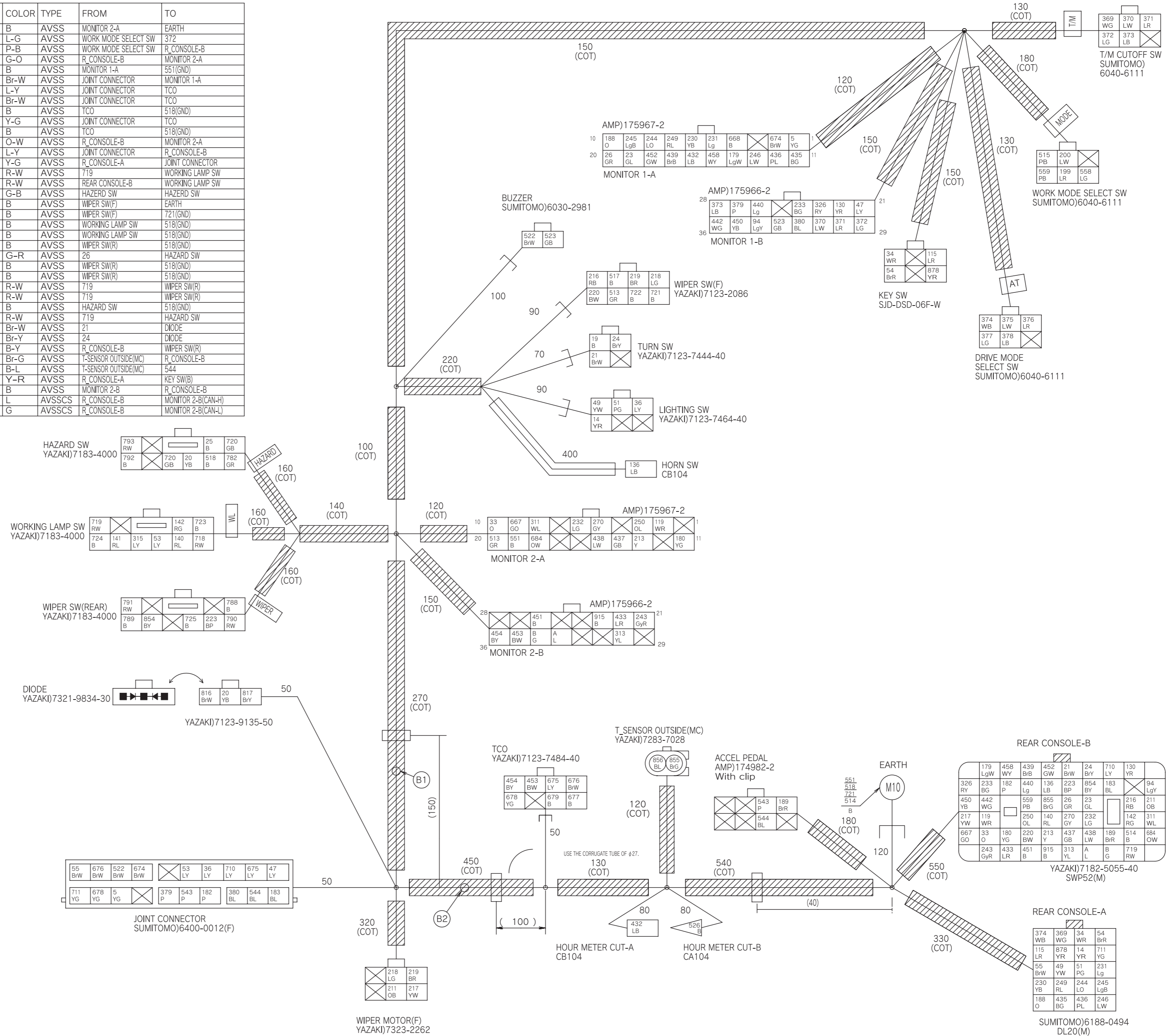
125	41	384	193
Sb	O	Lg	Sb
476	261	262	128
Y	G	R	W
122	44	382	138
P	Gy	L	Br
796	805	804	803
O	B	B	B

REAR_CONSOLE-A
SUMITOMO)6188-0495

ZW220/250 FRONT CONSOLE HARNESS1(EU STANDARD,GENERAL STANDARD) ZW310 FRONT CONSOLE HARNESS1

No.	SIZE	COLOR	TYPE	FROM	TO
5	0.5	Y-G	AVSS	JOINT CONNECTOR	MONITOR 1-A
14	1.25	Y-R	AVSS	R_CONSOLE-A	LIGHTING SW
19	0.5	B	AVSS	TURN SW	721(GND)
20	0.5	Y-B	AVSS	DIODE	HAZARD SW
21	0.5	Br-W	AVSS	TURN SW(LH)	R_CONSOLE-B
23	0.5	G-L	AVSS	R_CONSOLE-B	MONITOR 1-A
24	0.5	Br-Y	AVSS	TURN SW(RH)	R_CONSOLE-B
25	0.5	B	AVSS	HAZARD SW	518(GND)
26	0.5	G-R	AVSS	R_CONSOLE-B	MONITOR 1-A
33	0.5	O	AVSS	R_CONSOLE-B	MONITOR 2-A
34	0.5	W-R	AVSS	KEY SW(ACC)	R_CONSOLE-A
36	0.75	L-Y	AVSS	LIGHTING SW	JOINT CONNECTOR
47	0.5	L-Y	AVSS	JOINT CONNECTOR	MONITOR 1-B
49	0.5	Y-W	AVSS	LIGHTING SW	R_CONSOLE-A
51	0.5	P-G	AVSS	LIGHTING SW	R_CONSOLE-A
53	0.5	L-Y	AVSS	JOINT CONNECTOR	WORKING LAMP SW
54	1.25	Br-R	AVSS	KEY SW(ON)	R_CONSOLE-A
55	0.75	Br-W	AVSS	R_CONSOLE-A	JOINT CONNECTOR
94	0.5	Lg-Y	AVSS	MONITOR 1-B	R_CONSOLE-B
115	0.75	L-R	AVSS	KEY SW(START)	R_CONSOLE-A
119	0.5	W-R	AVSS	R_CONSOLE-B	MONITOR 2-A
130	0.5	Y-R	AVSS	R_CONSOLE-B	MONITOR 1-B
136	0.75	L-B	AVSS	R_CONSOLE-B	HORN SW
140	0.5	R-L	AVSS	WORKING LAMP SW	R_CONSOLE-B
141	0.5	R-L	AVSS	WORKING LAMP SW	140
142	0.5	R-G	AVSS	WORKING LAMP SW	R_CONSOLE-B
179	0.5	Lg-W	AVSS	MONITOR 1-A	R_CONSOLE-B
180	0.5	Y-G	AVSS	R_CONSOLE-B	MONITOR 2-A
182	0.75	P	AVSS	R_CONSOLE-B	JOINT CONNECTOR
183	0.75	B-L	AVSS	JOINT CONNECTOR	R_CONSOLE-B
188	0.5	O	AVSS	MONITOR 1-A	R_CONSOLE-A
189	0.5	Br-R	AVSS	ACCEL PEDAL(SIG)	R_CONSOLE-B
199	0.5	L-R	AVSS	WORK MODE SELECT SW	371
200	0.5	L-W	AVSS	WORK MODE SELECT SW	370
211	0.75	O-B	AVSS	R_CONSOLE-B	WIPER MOTOR(F)
213	0.5	Y	AVSS	R_CONSOLE-B	MONITOR 2-A
216	0.75	R-B	AVSS	WIPER SW(F)	R_CONSOLE-B
217	0.75	Y-W	AVSS	R_CONSOLE-B	WIPER MOTOR(F)
218	0.75	L-G	AVSS	WIPER MOTOR(F)LOW	WIPER SW(F)
219	0.75	B-R	AVSS	WIPER MOTOR(F)HI	WIPER SW(F)
220	0.5	B-W	AVSS	R_CONSOLE-B	WIPER SW(F)
223	0.5	B-P	AVSS	R_CONSOLE-B	WIPER SW(R)
230	0.5	Y-B	AVSS	R_CONSOLE-A	MONITOR 1-A
231	0.5	Lg	AVSS	MONITOR 1-A	R_CONSOLE-A
232	0.5	L-G	AVSS	R_CONSOLE-B	MONITOR 2-A
233	0.5	B-G	AVSS	R_CONSOLE-B	MONITOR 1-B
243	0.5	Gy-R	AVSS	MONITOR 2-B	R_CONSOLE-B
244	0.5	L-O	AVSS	MONITOR 1-A	R_CONSOLE-A
245	0.5	Lg-B	AVSS	MONITOR 1-A	R_CONSOLE-A
246	0.5	L-W	AVSS	MONITOR 1-A	R_CONSOLE-A
249	0.5	R-L	AVSS	MONITOR 1-A	R_CONSOLE-A
250	0.5	O-L	AVSS	R_CONSOLE-B	MONITOR 2-A
270	0.5	G-Y	AVSS	R_CONSOLE-B	MONITOR 2-A
311	0.5	W-L	AVSS	R_CONSOLE-B	MONITOR 2-A
313	0.5	Y-L	AVSS	MONITOR 2-B	R_CONSOLE-B
315	0.5	L-Y	AVSS	53	WORKING LAMP SW
326	0.5	R-Y	AVSS	R_CONSOLE-B	MONITOR 1-B
369	0.5	W-G	AVSS	T/M CUTOFF SW	R_CONSOLE-A
370	0.5	L-W	AVSS	MONITOR 1-B	T/M CUTOFF SW
371	0.5	L-R	AVSS	MONITOR 1-B	T/M CUTOFF SW
372	0.5	L-G	AVSS	MONITOR 1-B	T/M CUTOFF SW
373	0.5	L-B	AVSS	MONITOR 1-B	T/M CUTOFF SW
374	0.5	W-B	AVSS	DRIVE MODE SELECT SW	R_CONSOLE-A
375	0.5	L-W	AVSS	370	DRIVE MODE SELECT SW
376	0.5	L-R	AVSS	371	DRIVE MODE SELECT SW
377	0.5	L-G	AVSS	372	DRIVE MODE SELECT SW
378	0.5	L-B	AVSS	373	DRIVE MODE SELECT SW
379	0.5	P	AVSS	JOINT CONNECTOR	MONITOR 1-B
380	0.5	B-L	AVSS	MONITOR 1-B	JOINT CONNECTOR
432	0.5	L-B	AVSS	MONITOR 1-A	HOURLY METER CUT-A
433	0.5	L-R	AVSS	MONITOR 2-B	R_CONSOLE-B
435	0.5	B-G	AVSS	MONITOR 1-A	R_CONSOLE-A
436	0.5	P-L	AVSS	MONITOR 1-A	R_CONSOLE-A
437	0.5	G-B	AVSS	R_CONSOLE-B	MONITOR 2-A
438	0.5	L-W	AVSS	R_CONSOLE-B	MONITOR 2-A
439	0.5	Br-B	AVSS	MONITOR 1-A	R_CONSOLE-B
440	0.5	Lg	AVSS	MONITOR 1-B	R_CONSOLE-B
442	0.5	W-G	AVSS	MONITOR 1-B	R_CONSOLE-B
450	0.5	Y-B	AVSS	MONITOR 1-B	R_CONSOLE-B
451	0.5	B	AVSS	MONITOR 2-B	R_CONSOLE-B
452	0.5	G-W	AVSS	MONITOR 1-A	R_CONSOLE-B
453	0.5	B-W	AVSS	MONITOR 2-B	TCO
454	0.5	B-Y	AVSS	MONITOR 2-B	TCO
458	0.5	W-Y	AVSS	MONITOR 1-A	R_CONSOLE-B
513	0.5	G-R	AVSS	MONITOR 2-A	WIPER SW(F)
514	2	B	AVSS	EARTH	R_CONSOLE-B
515	0.5	P-B	AVSS	WORK MODE SELECT SW	559
517	0.5	B	AVSS	WIPER SW(F)	721(GND)
518	1.25	B	AVSS	HAZARD SW	EARTH
522	0.5	Br-W	AVSS	JOINT CONNECTOR	BUZZER(+)
523	0.5	G-B	AVSS	BUZZER(-)	MONITOR 1-B
526	0.5	B	AVSS	HOURLY METER CUT-B	551(GND)
543	0.5	P	AVSS	JOINT CONNECTOR	ACCEL PEDAL(+5V)
544	0.5	B-L	AVSS	ACCEL PEDAL(GND)	JOINT CONNECTOR

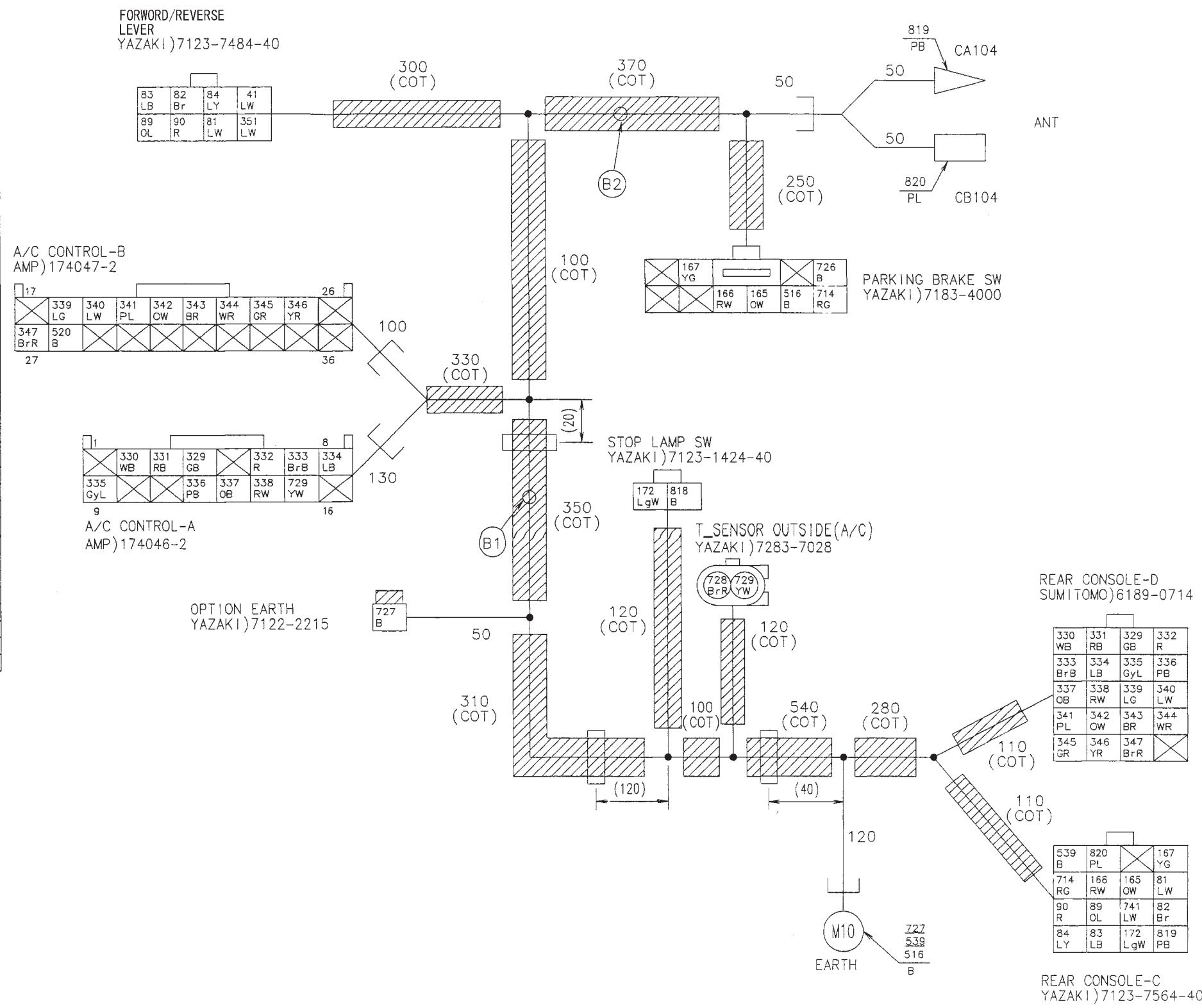
No.	SIZE	COLOR	TYPE	FROM	TO
551	0.5	B	AVSS	MONITOR 2-A	EARTH
558	0.5	L-G	AVSS	WORK MODE SELECT SW	372
559	0.5	P-B	AVSS	WORK MODE SELECT SW	R_CONSOLE-B
667	0.5	G-O	AVSS	R_CONSOLE-B	MONITOR 2-A
668	0.5	B	AVSS	MONITOR 1-A	551(GND)
674	0.5	Br-W	AVSS	JOINT CONNECTOR	MONITOR 1-A
675	0.5	L-Y	AVSS	JOINT CONNECTOR	TCO
676	0.5	Br-W	AVSS	JOINT CONNECTOR	TCO
677	0.5	B	AVSS	TCO	518(GND)
678	0.5	Y-G	AVSS	JOINT CONNECTOR	TCO
679	0.5	B	AVSS	TCO	518(GND)
684	0.5	O-W	AVSS	R_CONSOLE-B	MONITOR 2-A
710	0.75	L-Y	AVSS	JOINT CONNECTOR	R_CONSOLE-B
711	0.75	Y-G	AVSS	R_CONSOLE-A	JOINT CONNECTOR
718	0.5	R-W	AVSS	719	WORKING LAMP SW
719	0.5	R-W	AVSS	REAR CONSOLE-B	WORKING LAMP SW
720	0.5	G-B	AVSS	HAZARD SW	HAZARD SW
721	1.25	B	AVSS	WIPER SW(F)	EARTH
722	0.5	B	AVSS	WIPER SW(F)	721(GND)
723	0.5	B	AVSS	WORKING LAMP SW	518(GND)
724	0.5	B	AVSS	WORKING LAMP SW	518(GND)
725	0.5	B	AVSS	WIPER SW(R)	518(GND)
782	0.5	G-R	AVSS	26	HAZARD SW
788	0.5	B	AVSS	WIPER SW(R)	518(GND)
789	0.5	B	AVSS	WIPER SW(R)	518(GND)
790	0.5	R-W	AVSS	719	WIPER SW(R)
791	0.5	R-W	AVSS	719	WIPER SW(R)
792	0.5	B	AVSS	HAZARD SW	518(GND)
793	0.5	R-W	AVSS	719	HAZARD SW
816	0.5	Br-W	AVSS	21	DIODE
817	0.5	Br-Y	AVSS	24	DIODE
854	0.5	B-Y	AVSS	R_CONSOLE-B	WIPER SW(R)
855	0.5	Br-G	AVSS	T-SENSOR OUTSIDE(MC)	R_CONSOLE-B
856	0.5	B-L	AVSS	T-SENSOR OUTSIDE(MC)	544
878	1.25	Y-R	AVSS	R_CONSOLE-A	KEY SW(B)
915	0.5	B	AVSS	MONITOR 2-A	R_CONSOLE-B
A	0.5	L	AVSSCS	R_CONSOLE-B	MONITOR 2-B(CAN-H)
B	0.5	G	AVSSCS	R_CONSOLE-B	MONITOR 2-B(CAN-L)



ZW220/250 FRONT CONSOLE HARNESS2(EU STANDARD,GENERAL STANDARD)

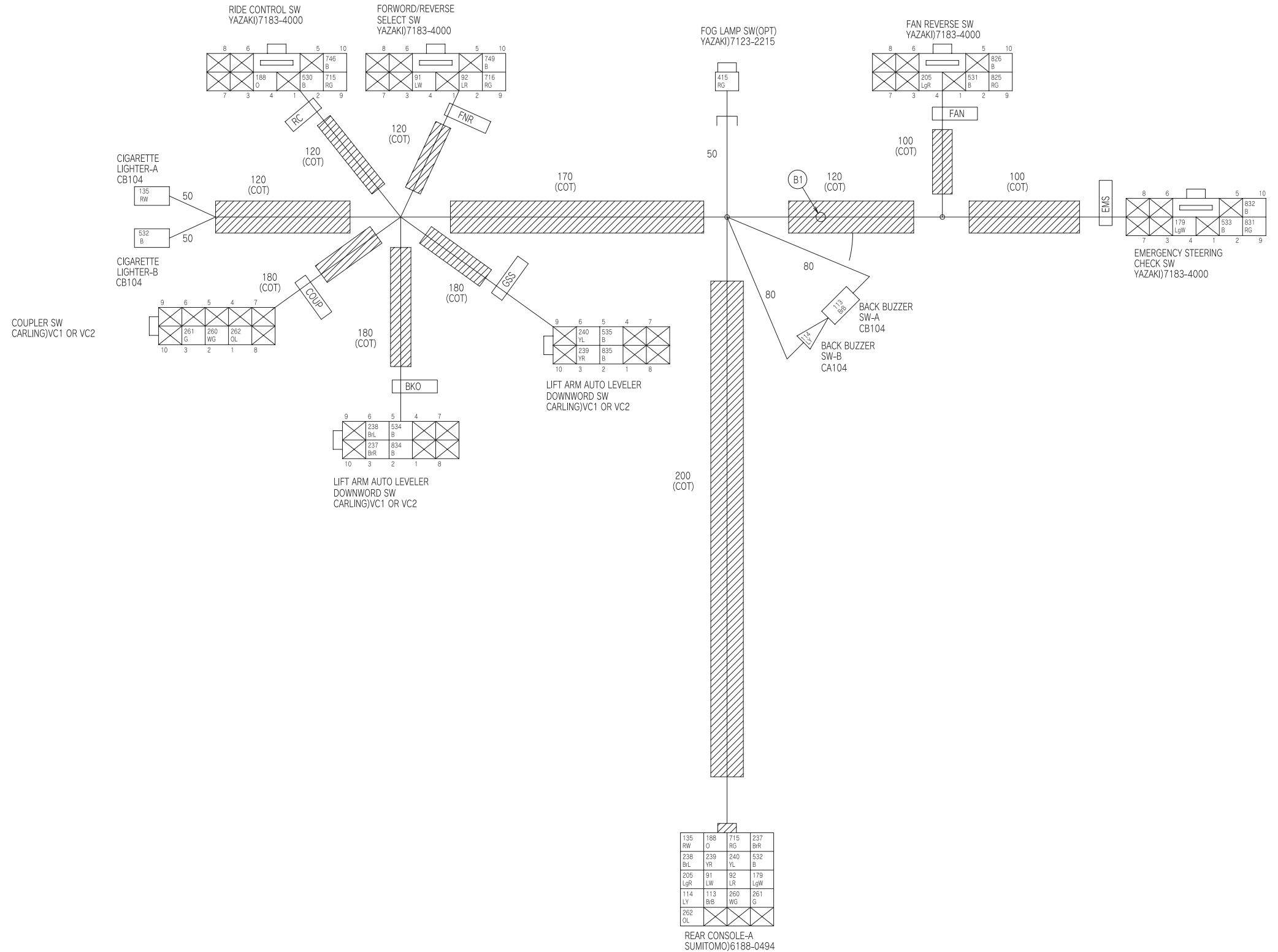
ZW310 FRONT CONSOLE HARNESS2

No.	SIZE	COLOR	TYPE	FROM	TO
81	0.5	L-W	AVSS	R_CONSOLE-C	FORWORD/REVERSE LEVER
82	0.5	Br	AVSS	FORWORD/REVERSE LEVER(N)	R_CONSOLE-C
83	0.5	L-B	AVSS	FORWORD/REVERSE LEVER(F)	R_CONSOLE-C
84	0.5	L-Y	AVSS	FORWORD/REVERSE LEVER(R)	R_CONSOLE-C
89	0.5	O-L	AVSS	FORWORD/REVERSE LEVER(B)	R_CONSOLE-C
90	0.5	R	AVSS	FORWORD/REVERSE LEVER(C)	R_CONSOLE-C
165	0.5	O-W	AVSS	R_CONSOLE-C	PARKING BRAKE SW
166	0.5	R-W	AVSS	R_CONSOLE-C	PARKING BRAKE SW
167	0.5	Y-G	AVSS	PARKING BRAKE SW	R_CONSOLE-C
172	0.5	Lg-W	AVSS	R_CONSOLE-C	STOP LAMP SW
329	0.5	G-B	AVSS	A/C CONTROL-A	R_CONSOLE-D
330	0.5	W-B	AVSS	R_CONSOLE-D	A/C CONTROL-A
331	0.5	R-B	AVSS	A/C CONTROL-A	R_CONSOLE-D
332	0.5	R	AVSS	R_CONSOLE-D	A/C CONTROL-A
333	0.5	Br-B	AVSS	A/C CONTROL-A	R_CONSOLE-D
334	0.5	L-B	AVSS	A/C CONTROL-A	R_CONSOLE-D
335	0.5	Gy-L	AVSS	R_CONSOLE-D	A/C CONTROL-A
336	0.5	P-B	AVSS	A/C CONTROL-A	R_CONSOLE-D
337	0.5	O-B	AVSS	A/C CONTROL-A	R_CONSOLE-D
338	0.5	R-W	AVSS	A/C CONTROL-A	R_CONSOLE-D
339	0.5	L-G	AVSS	R_CONSOLE-D	A/C CONTROL-B
340	0.5	L-W	AVSS	R_CONSOLE-D	A/C CONTROL-B
341	0.5	P-L	AVSS	A/C CONTROL-B	R_CONSOLE-D
342	0.5	O-W	AVSS	R_CONSOLE-D	A/C CONTROL-B
343	0.5	B-R	AVSS	R_CONSOLE-D	A/C CONTROL-B
344	0.5	W-R	AVSS	R_CONSOLE-D	A/C CONTROL-B
345	0.5	G-R	AVSS	A/C CONTROL-B	R_CONSOLE-D
346	0.5	Y-R	AVSS	R_CONSOLE-D	A/C CONTROL-B
347	0.5	Br-R	AVSS	R_CONSOLE-D	A/C CONTROL-B
351	0.5	L-W	AVSS	FORWORD/REVERSE LEVER(COM)	81
516	1.25	B	AVSS	PARKING BRAKE SW	EARTH
520	0.5	B	AVSS	A/C CONTROL-B	516(GND)
539	2	B	AVSS	EARTH	R_CONSOLE-C
714	0.5	R-G	AVSS	R_CONSOLE-C	PARKING BRAKE SW
726	1.25	B	AVSS	PARKING BRAKE SW	516(GND)
727	1.25	B	AVSS	OPTION EARTH	EARTH
728	0.5	Br-R	AVSS	T_SENSOR OUTSIDE	347
729	0.5	Y-W	AVSS	A/C CONTROL-A	T_SENSOR OUTSIDE
741	0.5	L-W	AVSS	R_CONSOLE-C	FORWORD/REVERSE LEVER(COM1)
818	0.5	B	AVSS	STOP LAMP SW	516(GND)
819	0.5	P-B	AVSS	ANT	R_CONSOLE-C
820	0.5	P-L	AVSS	ANT	R_CONSOLE-C



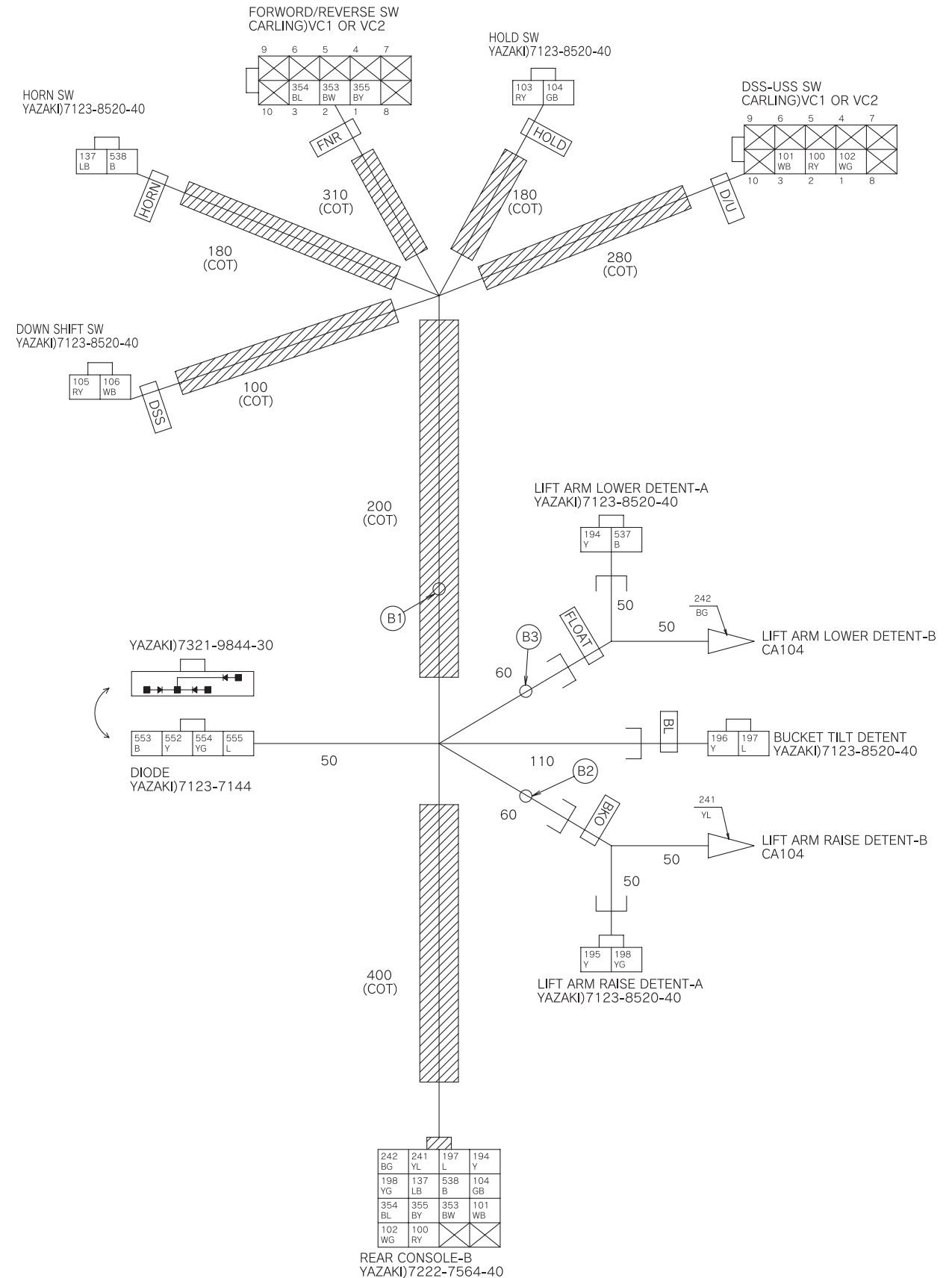
ZW220/250 SIDE CONSOLE HARNESS1(EU STANDARD,GENERAL STANDARD) ZW310 SIDE CONSOLE HARNESS1

No.	SIZE	COLOR	TYPE	FROM	TO
91	0.5	L-W	AVSS	REAR CONSOLE-A	FORWARD/REVERSE SELECT SW
92	0.5	L-R	AVSS	FORWARD/REVERSE SELECT SW	REAR CONSOLE-A
113	0.5	Bf-B	AVSS	REAR CONSOLE-A	BACK BUZZER SW-A
114	0.5	L-Y	AVSS	BACK BUZZER SW-B	REAR CONSOLE-A
135	1.25	R-W	AVSS	REAR CONSOLE-A	CIGARETTE LIGHTER-A
179	0.5	Lg-W	AVSS	REAR CONSOLE-A	EMERGENCY STEERING CHECK SW
188	0.5	O	AVSS	REAR CONSOLE-A	RIDE CONTROL SW
205	0.5	Lg-R	AVSS	REAR CONSOLE-A	FAN REVERSE SW
237	0.5	Bf-R	AVSS	REAR CONSOLE-A	LIFT ARM AUTO LEVELER UPWARD SET SW
238	0.5	Bf-L	AVSS	REAR CONSOLE-A	LIFT ARM AUTO LEVELER DOWNWARD SET SW
239	0.5	Y-R	AVSS	REAR CONSOLE-A	LIFT ARM AUTO LEVELER UPWARD SET SW
240	0.5	Y-L	AVSS	REAR CONSOLE-A	LIFT ARM AUTO LEVELER DOWNWARD SET SW
260	0.5	W-G	AVSS	REAR CONSOLE-A	COUPLER SW
261	0.5	G	AVSS	COUPLER SW(PUSH)	REAR CONSOLE-A
262	0.5	O-L	AVSS	COUPLER SW(PULL)	REAR CONSOLE-A
415	0.5	R-G	AVSS	715	FOG LAMP SW(OPT)
530	0.5	B	AVSS	RIDE CONTROL SW	532(GND)
531	0.5	B	AVSS	FAN REVERSE SW	532(GND)
532	1.25	B	AVSS	CIGARETTE LIGHTER-B	REAR CONSOLE-A
533	0.5	B	AVSS	EMERGENCY STEERING CHECK SW	532(GND)
534	0.5	B	AVSS	LIFT ARM AUTO LEVELER UPWARD SET SW	532(GND)
535	0.5	B	AVSS	LIFT ARM AUTO LEVELER DOWNWARD SET SW	532(GND)
715	0.5	R-G	AVSS	REAR CONSOLE-A	RIDE CONTROL SW
716	0.5	R-G	AVSS	715	FORWARD/REVERSE SELECT SW
746	0.5	B	AVSS	RIDE CONTROL SW	532(GND)
749	0.5	B	AVSS	FORWARD/REVERSE SELECT SW	532(GND)
825	0.5	R-G	AVSS	715	FAN REVERSE SW
826	0.5	B	AVSS	FAN REVERSE SW	532(GND)
831	0.5	R-G	AVSS	715	EMERGENCY STEERING CHECK SW
832	0.5	B	AVSS	EMERGENCY STEERING CHECK SW	532(GND)
834	0.5	B	AVSS	LIFT ARM AUTO LEVELER UPWARD SET SW	532(GND)
835	0.5	B	AVSS	LIFT ARM AUTO LEVELER DOWNWARD SET SW	532(GND)



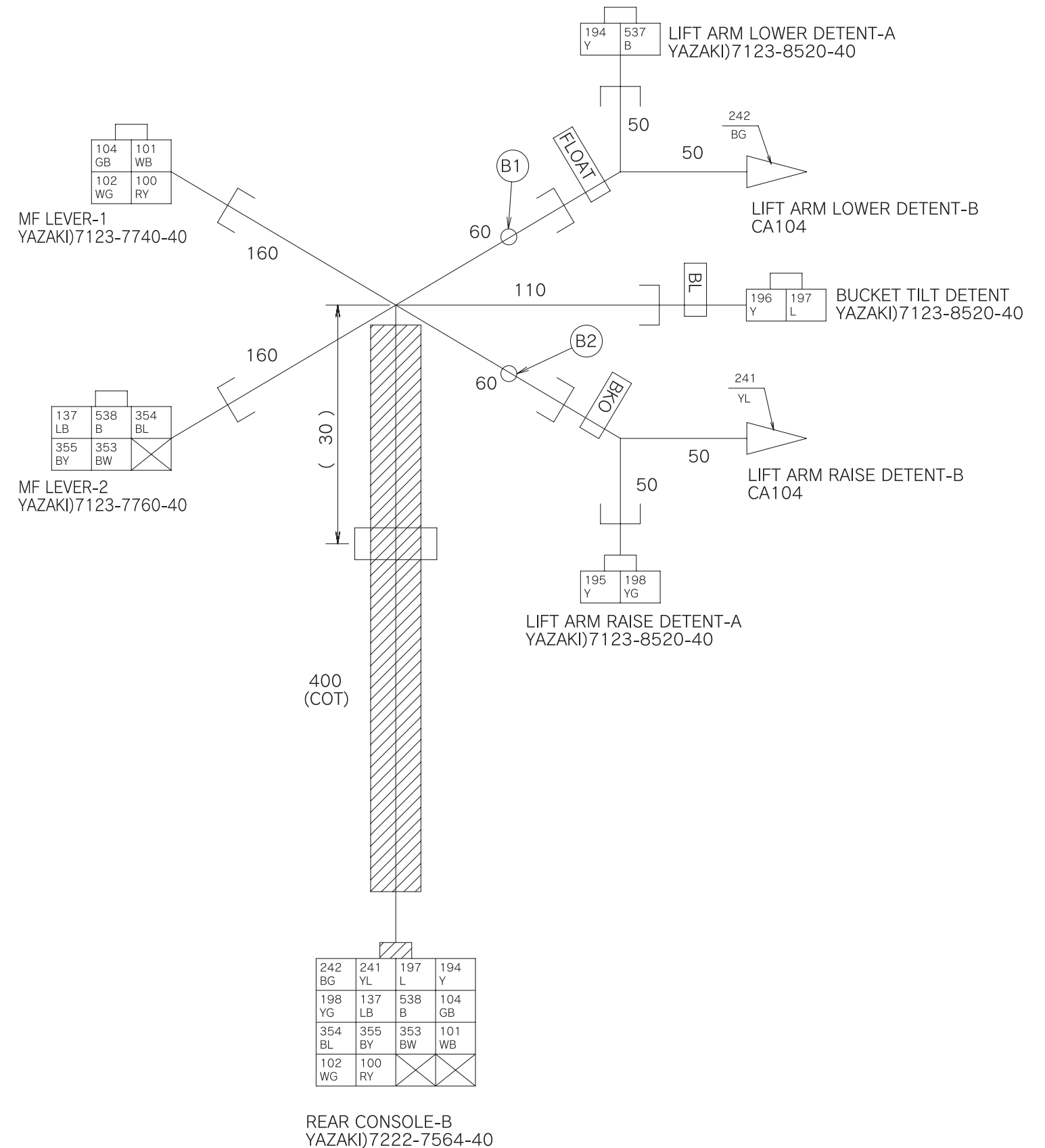
ZW220/250 SIDE CONSOLE HARNESS2 (EU STANDARD,GENERAL STANDARD)(FOR STANDARD TWO LEVER PILOT VALVE) ZW310 SIDE CONSOLE HARNESS2(FOR STANDARD TWO LEVER PILOT VALVE)

No.	SIZE	COLOR	TYPE	FROM	TO
100	0.5	R-Y	AVSS	REAR CONSOLE-B	DSS-USS SW
101	0.5	W-B	AVSS	DSS-USS SW(DSS)	REAR CONSOLE-B
102	0.5	W-G	AVSS	DSS-USS SW(USS)	REAR CONSOLE-B
103	0.5	R-Y	AVSS	100	HOLD SW
104	0.5	G-B	AVSS	HOLD SW	REAR CONSOLE-B
105	0.5	R-Y	AVSS	100	DOWN SHIFT SW
106	0.5	W-B	AVSS	DOWN SHIFT SW	101
137	0.5	L-B	AVSS	REAR CONSOLE-B	HORN SW
194	0.5	Y	AVSS	REAR CONSOLE-B	LIFT ARM LOWER-A
195	0.5	Y	AVSS	194	LIFT ARM RAISE-A
196	0.5	Y	AVSS	194	BUCKET TILT
197	0.5	L	AVSS	BUCKET TILT	REAR CONSOLE-B
198	0.5	Y-G	AVSS	LIFT ARM RAISE-A	REAR CONSOLE-B
241	0.5	Y-L	AVSS	LIFT ARM RAISE-B	REAR CONSOLE-B
242	0.5	B-G	AVSS	LIFT ARM LOWER-B	REAR CONSOLE-B
353	0.5	B-W	AVSS	REAR CONSOLE-B	FORWARD/REVERSE SW
354	0.5	B-L	AVSS	FORWARD/REVERSE SW(F)	REAR CONSOLE-B
355	0.5	B-Y	AVSS	FORWARD/REVERSE SW(R)	REAR CONSOLE-B
537	0.5	B	AVSS	LIFT ARM LOWER-A	538(GND)
538	0.75	B	AVSS	HORN SW	REAR CONSOLE-B
552	0.5	Y	AVSS	DIODE	194
553	0.5	B	AVSS	538(GND)	DIODE
554	0.5	Y-G	AVSS	198	DIODE
555	0.5	L	AVSS	197	DIODE



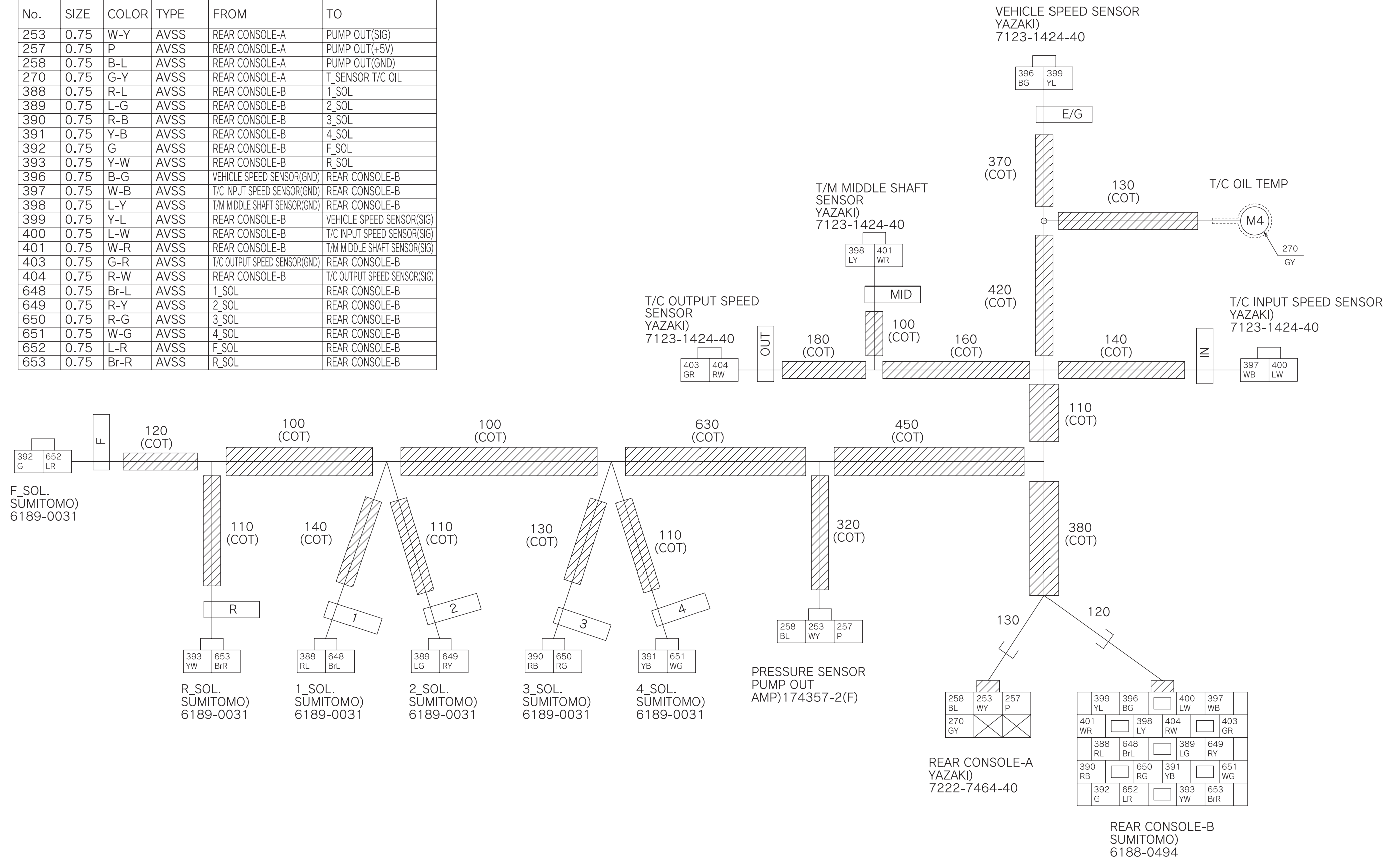
ZW220/250 SIDE CONSOLE HARNESS3 (EU STANDARD,GENERAL STANDARD)(FOR OPTIONAL JOY STICK LEVER PILOT VALVE) ZW310 SIDE CONSOLE HARNESS3(FOR OPTIONAL JOY STICK LEVER PILOT VALVE)

No.	SIZE	COLOR	TYPE	FROM	TO
100	0.5	R-Y	AVSS	REAR CONSOLE-B	MF LEVER-1
101	0.5	W-B	AVSS	MF LEVER-1(DSS)	REAR CONSOLE-B
102	0.5	W-G	AVSS	MF LEVER-1(USS)	REAR CONSOLE-B
104	0.5	G-B	AVSS	MF LEVER-1(HOLD)	REAR CONSOLE-B
137	0.5	L-B	AVSS	REAR CONSOLE-B	MF LEVER-2(HORN)
194	0.5	Y	AVSS	REAR CONSOLE-B	LIFT ARM LOWER-A
195	0.5	Y	AVSS	194	LIFT ARM RAISE-A
196	0.5	Y	AVSS	194	BACKET TILT
197	0.5	L	AVSS	BACKET TILT	REAR CONSOLE-B
198	0.5	Y-G	AVSS	LIFT ARM RAISE-A	REAR CONSOLE-B
241	0.5	Y-L	AVSS	LIFT ARM RAISE-B	REAR CONSOLE-B
242	0.5	B-G	AVSS	LIFT ARM LOWER-B	REAR CONSOLE-B
353	0.5	B-W	AVSS	REAR CONSOLE-B	MF LEVER-2
354	0.5	B-L	AVSS	MF LEVER-2(F)	REAR CONSOLE-B
355	0.5	B-Y	AVSS	MF LEVER-2(R)	REAR CONSOLE-B
537	0.5	B	AVSS	LIFT ARM LOWER-A	538(GND)
538	0.75	B	AVSS	MF LEVER-2(HORN)	REAR CONSOLE-B



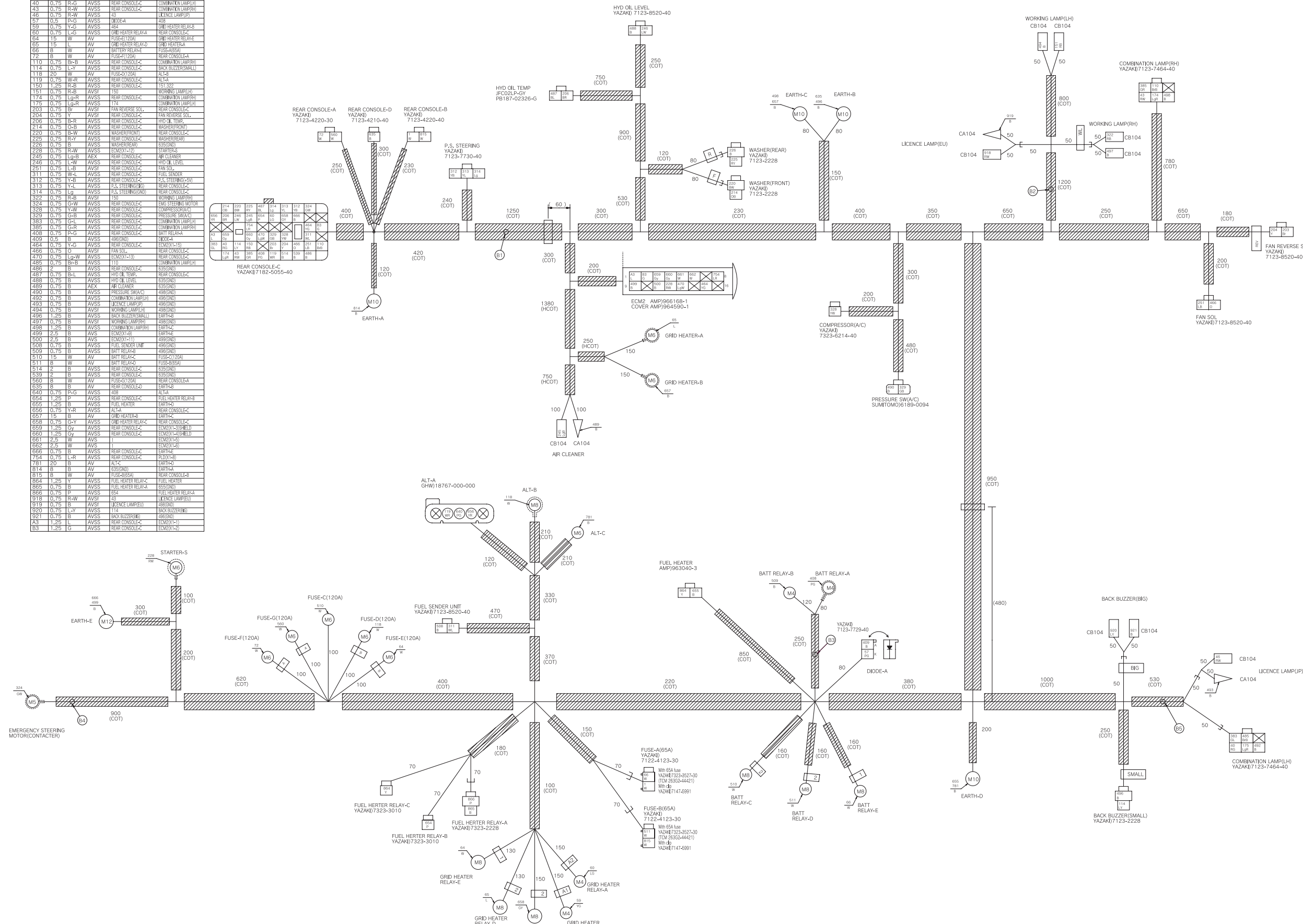
ZW220/250 TRANSMISSION HARNESS(GENERAL STANDARD) ZW310 TRANSMISSION HARNESS

No.	SIZE	COLOR	TYPE	FROM	TO
253	0.75	W-Y	AVSS	REAR CONSOLE-A	PUMP OUT(SIG)
257	0.75	P	AVSS	REAR CONSOLE-A	PUMP OUT(+5V)
258	0.75	B-L	AVSS	REAR CONSOLE-A	PUMP OUT(GND)
270	0.75	G-Y	AVSS	REAR CONSOLE-A	T_SENSOR T/C OIL
388	0.75	R-L	AVSS	REAR CONSOLE-B	1_SOL
389	0.75	L-G	AVSS	REAR CONSOLE-B	2_SOL
390	0.75	R-B	AVSS	REAR CONSOLE-B	3_SOL
391	0.75	Y-B	AVSS	REAR CONSOLE-B	4_SOL
392	0.75	G	AVSS	REAR CONSOLE-B	F_SOL
393	0.75	Y-W	AVSS	REAR CONSOLE-B	R_SOL
396	0.75	B-G	AVSS	VEHICLE SPEED SENSOR(GND)	REAR CONSOLE-B
397	0.75	W-B	AVSS	T/C INPUT SPEED SENSOR(GND)	REAR CONSOLE-B
398	0.75	L-Y	AVSS	T/M MIDDLE SHAFT SENSOR(GND)	REAR CONSOLE-B
399	0.75	Y-L	AVSS	REAR CONSOLE-B	VEHICLE SPEED SENSOR(SIG)
400	0.75	L-W	AVSS	REAR CONSOLE-B	T/C INPUT SPEED SENSOR(SIG)
401	0.75	W-R	AVSS	REAR CONSOLE-B	T/M MIDDLE SHAFT SENSOR(SIG)
403	0.75	G-R	AVSS	T/C OUTPUT SPEED SENSOR(GND)	REAR CONSOLE-B
404	0.75	R-W	AVSS	REAR CONSOLE-B	T/C OUTPUT SPEED SENSOR(SIG)
648	0.75	Br-L	AVSS	1_SOL	REAR CONSOLE-B
649	0.75	R-Y	AVSS	2_SOL	REAR CONSOLE-B
650	0.75	R-G	AVSS	3_SOL	REAR CONSOLE-B
651	0.75	L-G	AVSS	4_SOL	REAR CONSOLE-B
652	0.75	L-R	AVSS	F_SOL	REAR CONSOLE-B
653	0.75	Br-R	AVSS	R_SOL	REAR CONSOLE-B



ZW310 REAR FRAME HARNESS

No.	SIZE	COLOR	TYPE	FROM	TO
1	8	W	AV	FUSE-120A	REAR CONSOLE-C
40	0.75	R-G	AVSS	REAR CONSOLE-C	COMBINATION LAMP(LH)
43	0.75	R-W	AVSS	REAR CONSOLE-C	COMBINATION LAMP(RH)
46	0.75	R-W	AVSS	REAR CONSOLE-C	TURN SIGNAL
57	0.5	P-G	AVSS	REAR CONSOLE-C	AL-L
59	0.75	Y-G	AVSS	REAR CONSOLE-C	GRID HEATER-B
63	0.75	L-G	AVSS	REAR CONSOLE-C	REAR CONSOLE-C
64	15	W	AV	FUSE-120A	GRID HEATER RELAY
65	15	L	AV	GRID HEATER RELAY-C	GRID HEATER-A
66	8	W	AV	GRID HEATER RELAY-C	FUSE-120A
72	8	W	AV	FUSE-120A	REAR CONSOLE-C
110	0.75	B-B	AVSS	REAR CONSOLE-C	COMBINATION LAMP(LH)
114	0.75	L-Y	AVSS	REAR CONSOLE-C	BACK BUZZER(SMALL)
118	20	W	AV	FUSE-120A	AL-L
119	0.75	W-R	AVSS	REAR CONSOLE-C	AL-L
120	1.25	R-B	AVSS	REAR CONSOLE-C	TURN SIGNAL
151	0.75	R-B	AVSS	REAR CONSOLE-C	WARNING LAMP(LH)
174	0.75	L-G-R	AVSS	REAR CONSOLE-C	COMBINATION LAMP(LH)
175	0.75	L-G-R	AVSS	REAR CONSOLE-C	COMBINATION LAMP(RH)
203	0.75	BF	AVSS	FAN REVERSE SOL.	REAR CONSOLE-C
204	0.75	Y	AVSS	REAR CONSOLE-C	FAN REVERSE SOL.
209	0.75	R-R	AVSS	REAR CONSOLE-C	HYDRA TEMP
214	0.75	U-B	AVSS	REAR CONSOLE-C	WASHER(FRONT)
220	0.75	R-W	AVSS	REAR CONSOLE-C	WASHER(FRONT)
222	0.75	R-Y	AVSS	REAR CONSOLE-C	WASHER(FRONT)
226	0.75	B	AVSS	REAR CONSOLE-C	WASHER(FRONT)
228	0.75	R-W	AVSS	REAR CONSOLE-C	WASHER(FRONT)
242	0.75	L-G-B	AVSS	REAR CONSOLE-C	WASHER(FRONT)
246	0.75	L-W	AVSS	REAR CONSOLE-C	HYDRA LEVEL
251	0.75	L-B	AVSS	REAR CONSOLE-C	FAN SOL.
311	0.75	W-L	AVSS	REAR CONSOLE-C	FAN REVERSE SOL.
312	0.75	Y-B	AVSS	REAR CONSOLE-C	P.S. STEERING(S)
313	0.75	L-L	AVSS	REAR CONSOLE-C	P.S. STEERING(S)
314	0.75	L-G	AVSS	REAR CONSOLE-C	P.S. STEERING(S)
322	0.75	R-B	AVSS	REAR CONSOLE-C	WARNING LAMP(RH)
324	0.75	G-W	AVSS	REAR CONSOLE-C	EMERGENCY STEERING MOTOR
328	0.75	Y-W	AVSS	REAR CONSOLE-C	COMBINATION LAMP(LH)
329	0.75	G-B	AVSS	REAR CONSOLE-C	PRESSURE SW(A/C)
383	0.75	B	AVSS	REAR CONSOLE-C	COMBINATION LAMP(LH)
385	0.75	G-R	AVSS	REAR CONSOLE-C	COMBINATION LAMP(RH)
408	0.75	P-G	AVSS	REAR CONSOLE-C	BATT RELAY-A
409	0.75	P-G	AVSS	REAR CONSOLE-C	BATT RELAY-B
424	0.75	Y-G	AVSS	REAR CONSOLE-C	HYDRA LEVEL
466	0.75	U	AVSS	REAR CONSOLE-C	FAN SOL.
470	0.75	L-W	AVSS	REAR CONSOLE-C	REAR CONSOLE-C
485	0.75	R-B	AVSS	REAR CONSOLE-C	COMBINATION LAMP(LH)
486	2	B	AVSS	REAR CONSOLE-C	COMBINATION LAMP(RH)
487	0.75	B-L	AVSS	REAR CONSOLE-C	COMBINATION LAMP(LH)
488	0.75	B	AVSS	REAR CONSOLE-C	COMBINATION LAMP(RH)
489	0.75	B	AVSS	REAR CONSOLE-C	COMBINATION LAMP(LH)
490	0.75	B	AVSS	REAR CONSOLE-C	COMBINATION LAMP(RH)
492	0.75	B	AVSS	REAR CONSOLE-C	COMBINATION LAMP(LH)
493	0.75	B	AVSS	REAR CONSOLE-C	COMBINATION LAMP(RH)
494	0.75	B	AVSS	REAR CONSOLE-C	COMBINATION LAMP(LH)
496	1.25	B	AVSS	REAR CONSOLE-C	BACK BUZZER(SMALL)
497	0.75	B	AVSS	REAR CONSOLE-C	BACK BUZZER(BIG)
498	1.25	B	AVSS	REAR CONSOLE-C	BACK BUZZER(SMALL)
499	2.5	B	AVSS	REAR CONSOLE-C	BACK BUZZER(BIG)
500	2.5	B	AVSS	REAR CONSOLE-C	BACK BUZZER(SMALL)
508	0.75	B	AVSS	REAR CONSOLE-C	REAR CONSOLE-C
509	0.75	B	AVSS	REAR CONSOLE-C	REAR CONSOLE-C
510	15	W	AV	BATT RELAY-C	FUSE-C(120A)
511	8	W	AV	BATT RELAY-C	FUSE-D(120A)
514	2	B	AVSS	REAR CONSOLE-C	REAR CONSOLE-C
539	2	B	AVSS	REAR CONSOLE-C	REAR CONSOLE-C
560	8	W	AV	FUSE-120A	REAR CONSOLE-C
635	8	B	AV	REAR CONSOLE-C	REAR CONSOLE-C
640	0.75	P-G	AVSS	REAR CONSOLE-C	AL-L
654	1.25	P	AVSS	REAR CONSOLE-C	FUEL HEATER RELAY-B
655	1.25	B	AVSS	REAR CONSOLE-C	FUEL HEATER RELAY-A
656	0.75	Y-R	AVSS	REAR CONSOLE-C	AL-L
657	15	B	AVSS	REAR CONSOLE-C	REAR HEATER
658	0.75	G-Y	AVSS	REAR CONSOLE-C	REAR HEATER
659	1.25	G-Y	AVSS	REAR CONSOLE-C	REAR HEATER
660	1.25	G-Y	AVSS	REAR CONSOLE-C	REAR HEATER
661	2.5	W	AVSS	REAR CONSOLE-C	REAR HEATER
662	2.5	W	AVSS	REAR CONSOLE-C	REAR HEATER
666	0.75	B	AVSS	REAR CONSOLE-C	REAR CONSOLE-C
724	0.75	L-R	AVSS	REAR CONSOLE-C	PLOX(L)
781	20	B	AV	AL-L	REAR CONSOLE-C
814	8	B	AV	FUSE-120A	REAR CONSOLE-C
815	8	W	AV	FUSE-120A	REAR CONSOLE-C
864	1.25	Y	AVSS	FUEL HEATER RELAY-C	FUEL HEATER
865	0.75	B	AVSS	FUEL HEATER RELAY-C	FUEL HEATER
866	0.75	P	AVSS	FUEL HEATER RELAY-C	FUEL HEATER
918	0.75	R-W	AVSS	FUEL HEATER RELAY-C	FUEL HEATER
919	0.75	B	AVSS	FUEL HEATER RELAY-C	FUEL HEATER
920	0.75	L-V	AVSS	FUEL HEATER RELAY-C	FUEL HEATER
921	0.75	B	AVSS	FUEL HEATER RELAY-C	FUEL HEATER
93	1.25	L	AVSS	REAR CONSOLE-C	REAR CONSOLE-C
83	1.25	G	AVSS	REAR CONSOLE-C	REAR CONSOLE-C



ZW310 HYDRAULIC CIRCUIT DIAGRAM (EU STANDARD)

NOTE : Refer to the performance standard table in the Technical Manual for the set pressure of each relief valve.

