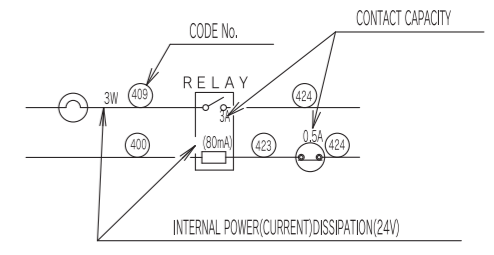
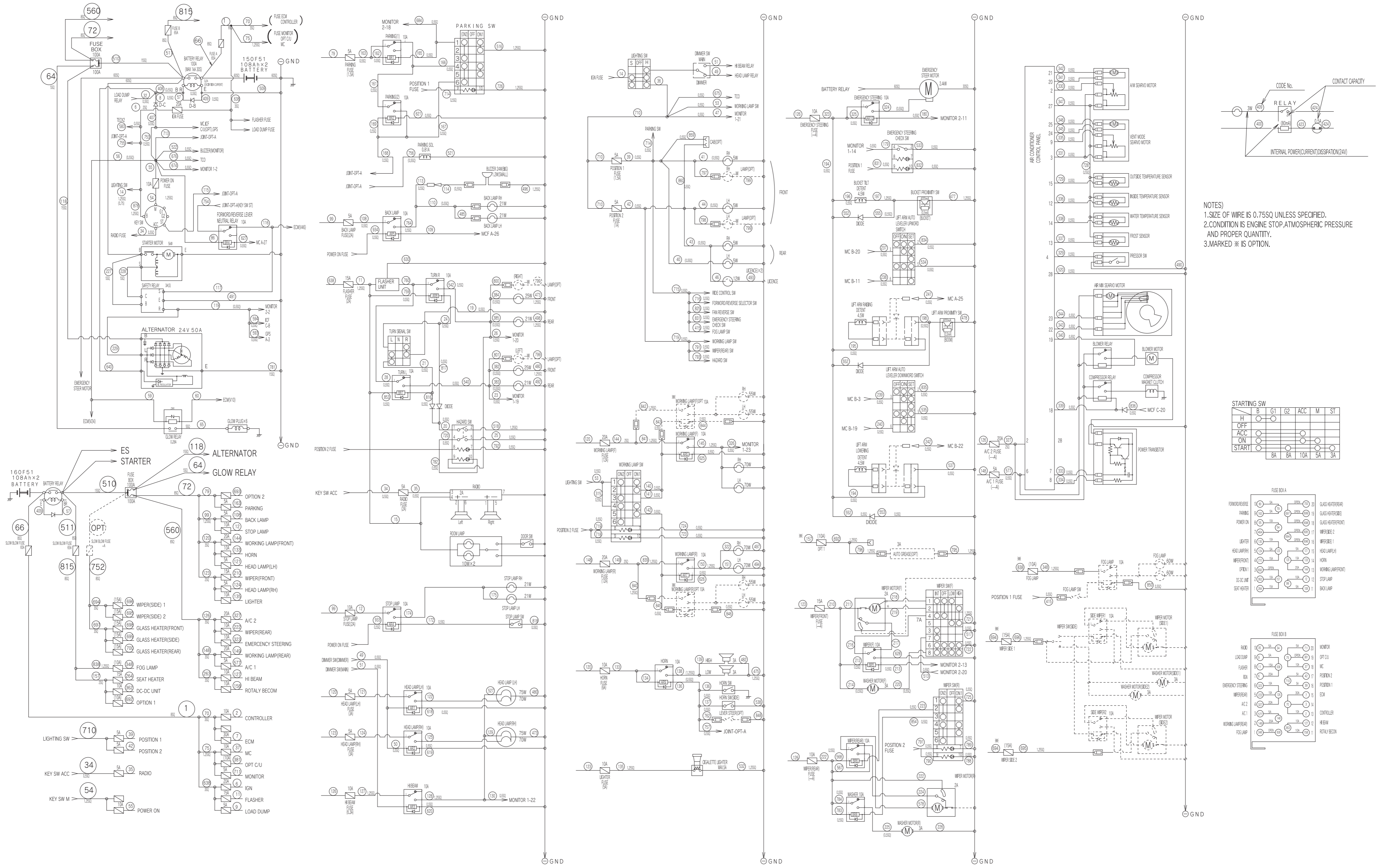


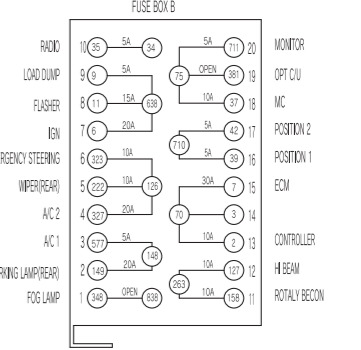
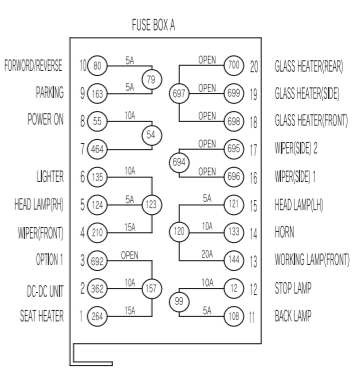
ZW220/250 ELECTRIC CIRCUIT DIAGRAM 1 (GENERAL STANDARD)



NOTES)
 1.SIZE OF WIRE IS 0.75SQ UNLESS SPECIFIED.
 2.CONDITION IS ENGINE STOP,ATMOSPHERIC PRESSURE AND PROPER QUANTITY.
 3.MARKED ※ IS OPTION.

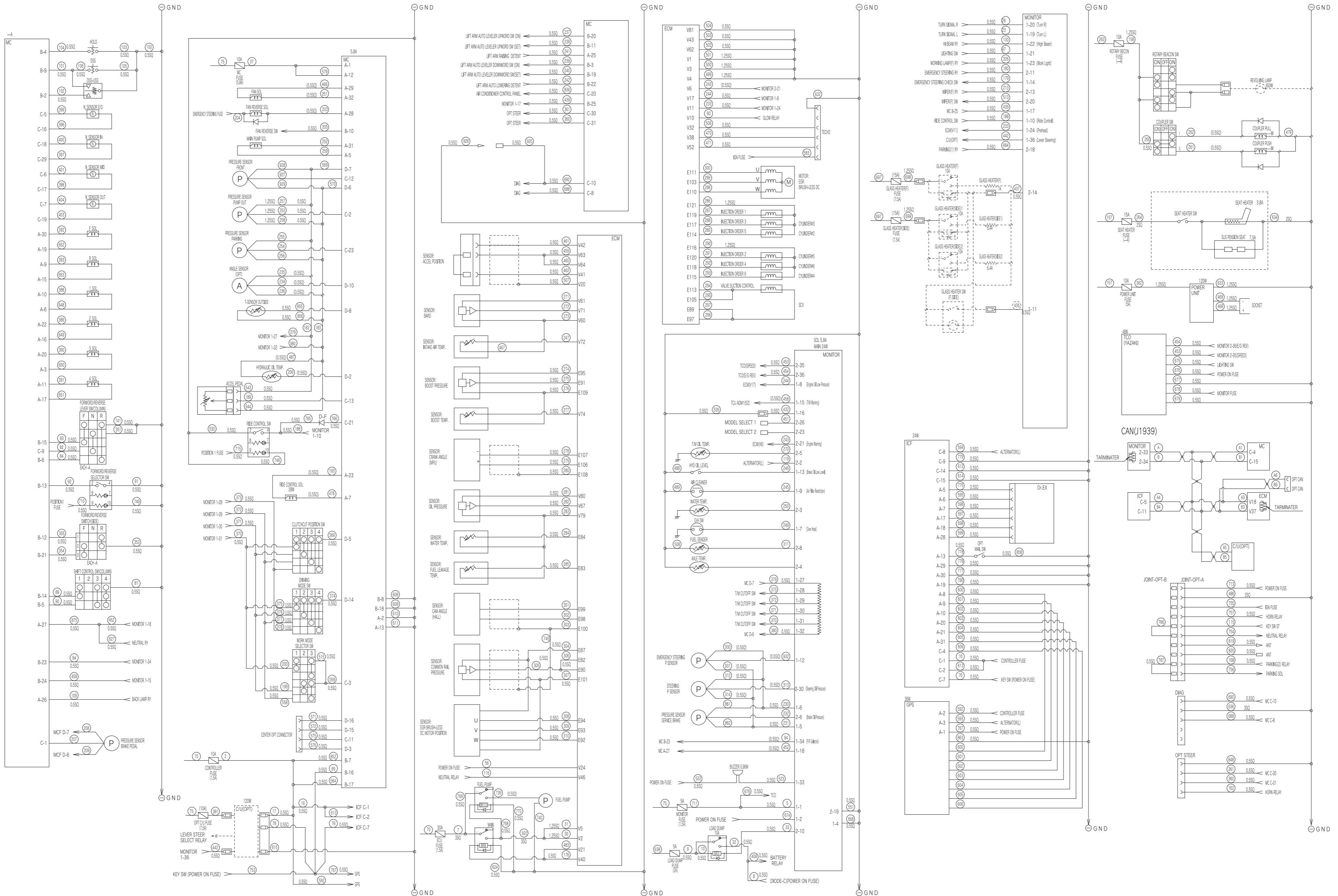
STARTING SW

HI	B	G1	G2	ACC	M	ST
OFF						
ACC						
ON						
START	BA	BA	10A	5A	3A	



0	10	YL	20	VB	30	WB	40	RG	50	WV	60	BB	70	W	80	LV	90	UR	100	VR	110	BB	120	W	130	VR	140	RL	150	BR	160	...	170	...	180	WV	190	...	200	LV	210	GB	220	WB	230	VB	240	YL	250	OL	260	WG	270	GY	280	GY	290	WB	300	RY	310	LR	320	...	330	WB	340	LV	350	...	360	BL	370	LV	380	BL	390	RB	400	LV	410	...	420	...	430	...	440	Lg	450	VB	460	B	470	LgW	480	B	490	B	500	B
---	----	----	----	----	----	----	----	----	----	----	----	----	----	---	----	----	----	----	-----	----	-----	----	-----	---	-----	----	-----	----	-----	----	-----	-----	-----	-----	-----	----	-----	-----	-----	----	-----	----	-----	----	-----	----	-----	----	-----	----	-----	----	-----	----	-----	----	-----	----	-----	----	-----	----	-----	-----	-----	----	-----	----	-----	-----	-----	----	-----	----	-----	----	-----	----	-----	----	-----	-----	-----	-----	-----	-----	-----	----	-----	----	-----	---	-----	-----	-----	---	-----	---	-----	---

ZW220/250 ELECTRIC CIRCUIT DIAGRAM 2 (GENERAL STANDARD)

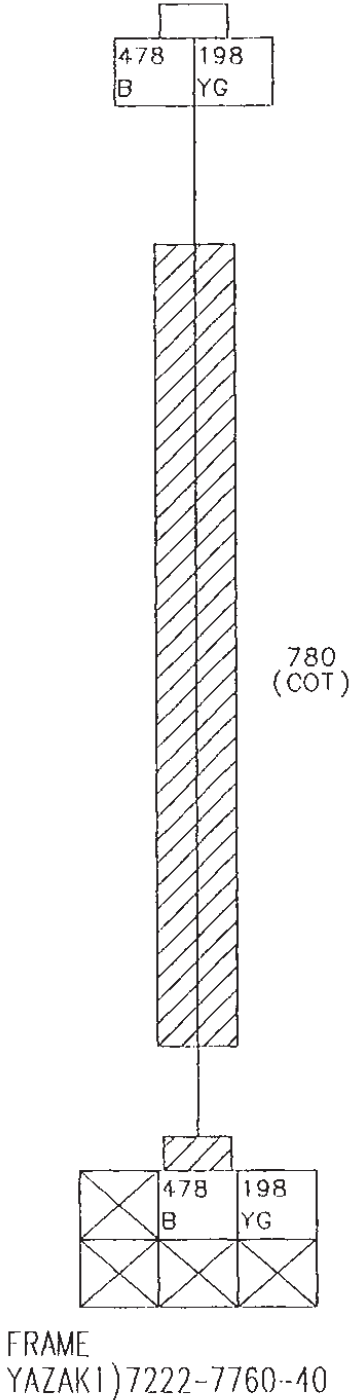


500B	510W	520B	530B	540GL	550...	560W	570BL	580...	590...	600W	610B	620B	630B	640PG	650RG	660...	670...	680...	690LR	700R	710L	720GB	730...	740B	750...	760GY	770B	780B	790R	800GR	810...	820PL	830...	840LW	850D	860RW	870B	880...	890...	900...	910...	920LV	930...	940...	950...	960...	970...	980...	990...
501B	511W	521B	531B	541GR	551...	561W	571GW	581GR	591...	601BR	611B	621B	631B	641...	651WG	661...	671...	681...	691LR	701...	711VG	721B	731...	741LW	751...	761...	771B	781B	791R	801GL	811...	821...	831RG	841WG	851Pu	861V	871B	881...	891...	901...	911...	921...	931...	941...	951...	961...	971...	981...	991...
502B	512...	522BW	532B	542GR	552Y	562...	572GR	582...	592Pu	602YR	612B	622...	632B	642...	652LR	662...	672...	682...	692WY	702...	712...	722B	732...	742...	752W	762LB	772...	782GR	792B	802...	812...	822...	832B	842WG	852Pu	862Lg	872Gy	882...	892...	902...	912...	922...	932...	942...	952...	962...	972...	982...	992...
503B	513GR	523GB	533B	543P	553B	563LW	573...	583YR	593WR	603GL	613B	623B	633B	643...	653BR	663...	673...	683...	693LW	703...	713BW	723B	733LG	743...	753BW	763...	773B	783RL	793R	803B	813...	823...	833...	843RL	853L	863B	873...	883...	893...	903...	913...	923B	933...	943...	953...	963...	973...	983...	993...
504B	514B	524...	534B	544YG	554Pu	564Pu	574...	584YR	594WR	604GL	614B	624B	634B	644...	654...	664...	674BW	684OW	694W	704...	714RG	724B	734RL	744...	754LR	764Bb	774...	784RL	794B	804B	814B	824...	834B	844B	854B	864...	874...	884...	894...	904...	914WY	924...	934BW	944...	954...	964...	974...	984...	994...
505...	515PB	525...	535B	545...	555L	565BL	575WL	585D	595YR	605GR	615B	625B	635B	645WY	655...	665...	675LV	685D	695GL	705...	715RG	725B	735V	745Gy	755YR	765O	775RW	785...	795...	805...	815W	825RG	835B	845RG	855BG	865...	875GW	885...	895...	905...	915B	925LR	935...	945...	955...	965...	975...	985...	995...
506P	516B	526B	536...	546...	556...	566BY	576YL	586LW	596S	606YL	616B	626B	636B	646LB	656...	666B	676BW	686...	696GR	706...	716RG	726B	736RL	746B	756VY	766OL	776B	786LR	796WY	806...	816BW	826B	836G	846B	856BL	866...	876VY	886...	896...	906...	916...	926B	936...	946...	956...	966...	976...	986...	996...
507Gy	517B	527YR	537B	547...	557...	567RL	577R	587...	597WL	607...	617B	627GW	637...	647WL	657B	667S	677O	687...	697W	707...	717...	727B	737...	747...	757LB	767BW	777B	787YV	797RG	807...	817BY	827...	837LG	847BW	857...	867VY	877B	887...	897...	907...	917...	927YR	937...	947...	957...	967...	977...	987...	997...
508B	518B	528B	538B	548...	558LG	568RL	578GW	588...	598WB	608B	618B	628B	638W	648BL	658...	668B	678VY	688GL	698O	708...	718RW	728BR	738...	748...	758...	768WB	778RL	788B	798RW	808...	818B	828...	838W	848B	858B	868BL	878YR	888...	898...	908...	918RW	928P	938...	948...	958...	968...	978...	988...	998...
509B	519...	529...	539B	549...	559PB	569P	579B	589...	599BG	609B	619B	629B	639B	649RY	659...	669...	679B	689...	699P	709...	719RW	729W	739O	749B	759L	769B	779B	789B	799B	809...	819PB	829...	839LV	849LV	859RG	869P	879...	889...	899...	909...	919B	929GL	939...	949...	959...	969...	979...	989...	999...

ZW220/250 LIFT ARM PROXIMITY SWITCH HARNESS(EU STANDARD,GENERAL STANDARD) ZW310 LIFT ARM PROXIMITY SWITCH HARNESS

No.	SIZE	COLOR	TYPE	FROM	TO
198	0.75	Y-G	AVSS	FRAME	BOOM KICK OUT
478	0.75	B	AVSS	BOOM KICK OUT	FRAME

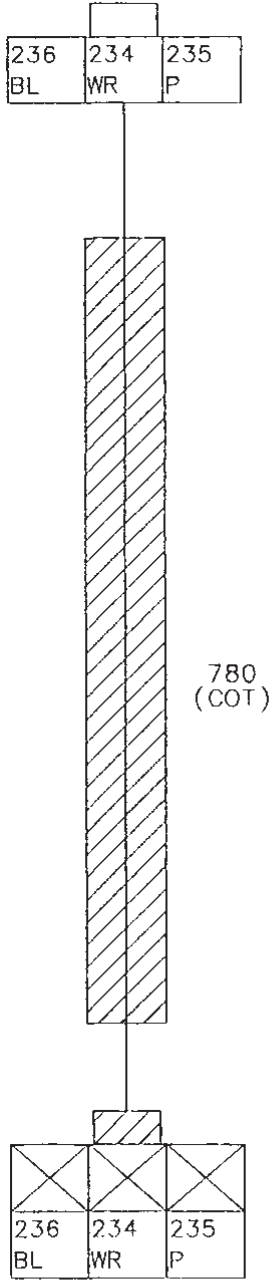
BOOM KICK OUT
 YAZAKI)7123-1424-40



ZW220/250 LIFT ARM ANGLE SENSOR HARNESS (EU STANDARD,GENERAL STANDARD)(OPTIONAL) ZW310 LIFT ARM ANGLE SENSOR HARNESS(OPTIONAL)

No.	SIZE	COLOR	TYPE	FROM	TO
234	0.75	W-R	AVSS	ANGLE SENSOR(SIG)	FRAME
235	0.75	P	AVSS	FRAME	ANGLE SENSOR(+5V)
236	0.75	B-L	AVSS	ANGLE SENSOR(GND)	FRAME

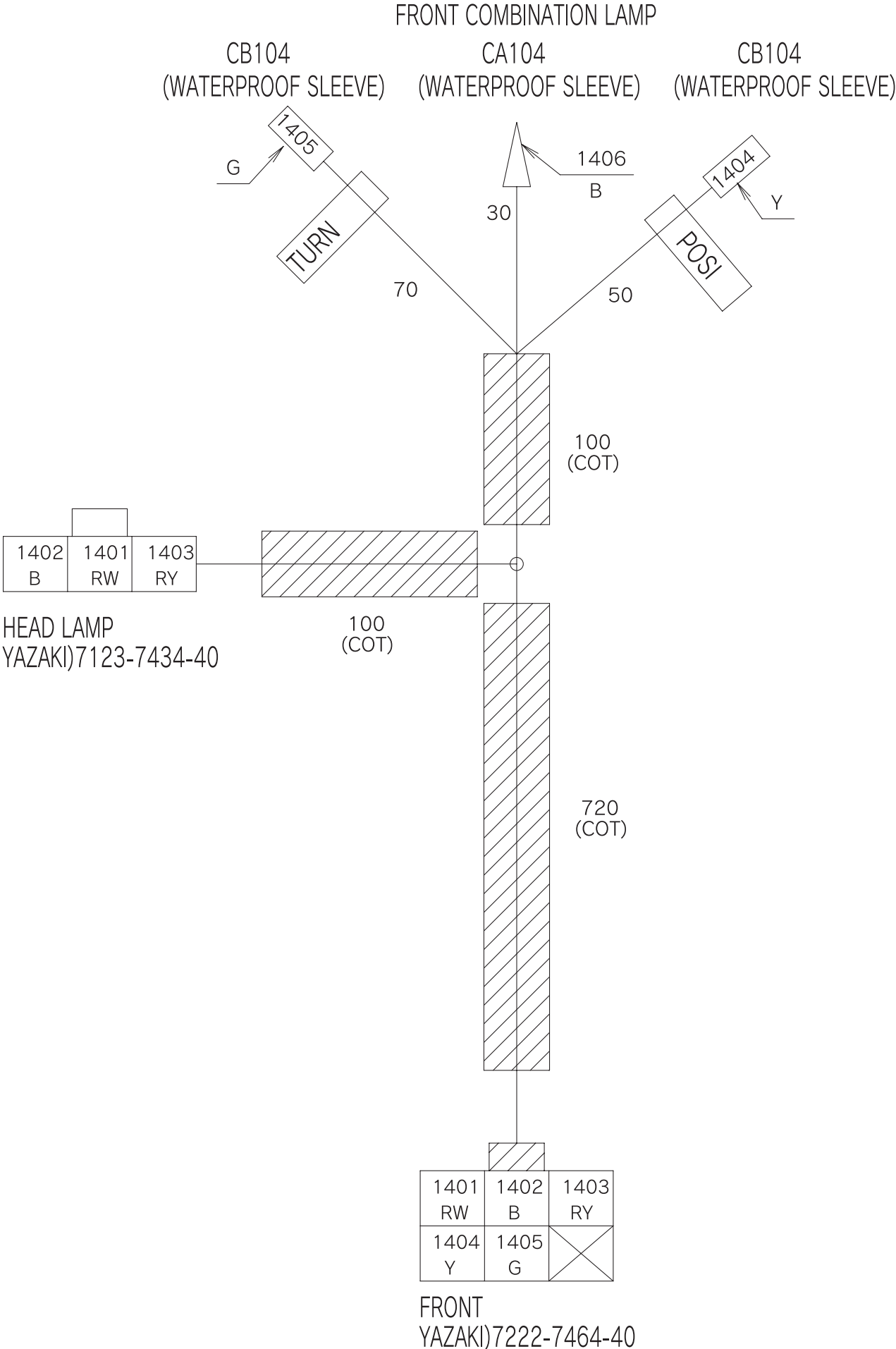
ANGLE SENSOR
 YAZAKI)7123-7730-40



FRAME
 YAZAKI)7222-7760-40

ZW220/250 FRONT LIGHT HARNESS(EU STANDARD,GENERAL STANDARD) ZW310 FRONT LIGHT HARNESS

No.	SIZE	COLOR	TYPE	FROM	TO
1401	0.75	R-W	AVSS	FRONT	HEAD LAMP(HI)
1402	1.25	B	AVSS	HEAD LAMP(GND)	FRONT
1403	0.75	R-Y	AVSS	FRONT	HEAD LAMP(LO)
1404	0.75	Y	AVSS	FRONT	F_COMBINATION(POSI)
1405	0.75	G	AVSS	FRONT	F_COMBINATION(TURN)
1406	0.75	B	AVSS	F_COMBINATION(EARTH)	1402

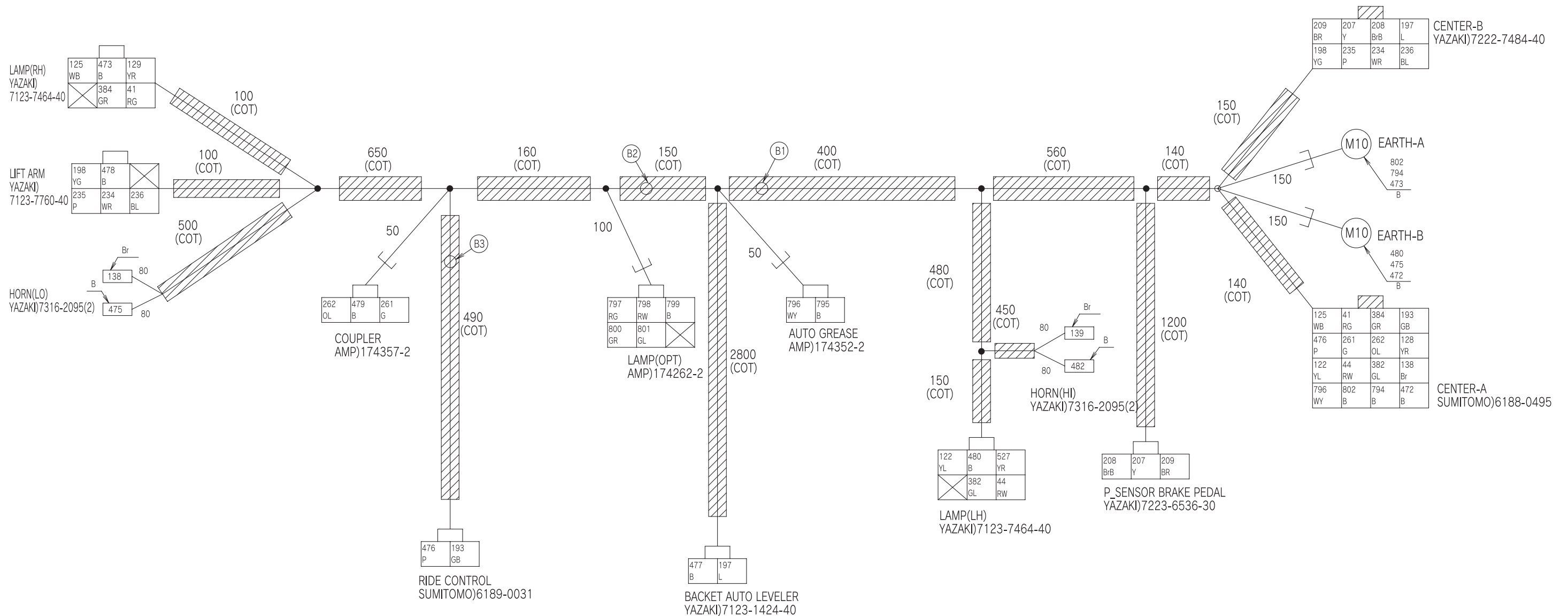


ZW220/250 FRONT HARNESS(EU STANDARD,GENERAL STANDARD)

ZW310 FRONT HARNESS

No.	SIZE	COLOR	TYPE	FROM	TO
41	0.75	R-G	AVSS	CENTER-A	LAMP(RH)(POSI)
44	0.75	R-W	AVSS	CENTER-A	LAMP(LH)(POSI)
122	0.75	Y-L	AVSS	CENTER-A	LAMP(LH)(LO)
125	0.75	W-B	AVSS	CENTER-A	LAMP(RH)(LO)
128	1.25	Y-R	AVSS	CENTER-A	129,527
129	0.75	Y-R	AVSS	128	LAMP(RH)(HI)
138	1.25	Br	AVSS	CENTER-A	HORN(LO)
139	0.75	Br	AVSS	138	HORN(HI)
193	0.75	G-B	AVSS	CENTER-A	RIDE CONTROL
197	1.25	L	AVSf	CENTER-B	BACKET AUTO LEVELER
198	0.75	Y-G	AVSS	CENTER-B	LIFT ARM(BKO)
207	0.75	Y	AVSS	P_SENSOR PEDAL(SIG)	CENTER-B
208	0.75	Br-B	AVSS	CENTER-B	P_SENSOR PEDAL(+)
209	0.75	B-R	AVSS	P_SENSOR PEDAL(GND)	CENTER-B
234	0.75	W-R	AVSS	LIFT ARM(SENSOR SIG)	CENTER-B
235	0.75	P	AVSS	CENTER-B	LIFT ARM(SENSOR +5V)
236	0.75	B-L	AVSS	LIFT ARM(SENSOR GND)	CENTER-B
261	0.75	G	AVSS	CENTER-A	COUPLER(PUSH)
262	0.75	O-L	AVSS	CENTER-A	COUPLER(PULL)
382	0.75	G-L	AVSS	CENTER-A	LAMP(LH)(TURN)
384	0.75	G-R	AVSS	CENTER-A	LAMP(RH)(TURN)
472	1.25	B	AVSS	EARTH-B	CENTER-A

No.	SIZE	COLOR	TYPE	FROM	TO
473	1.25	B	AVSS	LAMP(RH)	EARTH-A
475	1.25	B	AVSS	HORN(LO)	EARTH-B
476	0.75	P	AVSS	RIDE CONTROL	CENTER-A
477	1.25	B	AVSf	BACKET AUTO LEVELER	473
478	0.75	B	AVSS	LIFT ARM(BKO)	473
479	0.75	B	AVSS	COUPLER	473
480	1.25	B	AVSS	LAMP(LH)	EARTH-B
482	0.75	B	AVSS	HORN(HI)	475
527	0.75	Y-R	AVSS	128	LAMP(LH)(HI)
794	1.25	B	AVSS	EARTH-A	CENTER-A
795	1.25	B	AVSS	AUTO GREASE	475
796	1.25	W-Y	AVSS	CENTER-A	AUTO GREASE
797	0.75	R-G	AVSS	41	LAMP(OPT)(POSI RH)
798	0.75	R-W	AVSS	44	LAMP(OPT)(POSI LH)
799	0.75	B	AVSS	LAMP(OPT)	480
800	0.75	G-R	AVSS	384	LAMP(OPT)(TURN RH)
801	0.75	G-L	AVSS	382	LAMP(OPT)(TURN LH)
802	1.25	B	AVSS	EARTH-A	CENTER-A



ZW220/250 CENTER HARNESS(EU STANDARD,GENERAL STANDARD) ZW310 CENTER HARNESS

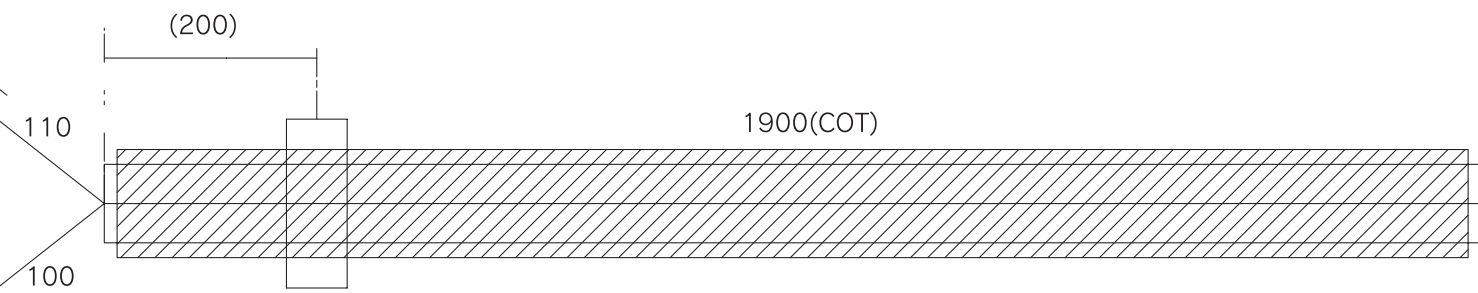
No.	SIZE	COLOR	TYPE	FROM	TO
41	1.25	O	---	FRONT-A	REAR_CONSOLE-A
44	1.25	Gy	---	FRONT-A	REAR_CONSOLE-A
122	1.25	P	---	FRONT-A	REAR_CONSOLE-A
125	1.25	Sb	---	FRONT-A	REAR_CONSOLE-A
128	1.25	W	---	FRONT-A	REAR_CONSOLE-A
138	1.25	Br	---	FRONT-A	REAR_CONSOLE-A
193	1.25	Sb	---	FRONT-A	REAR_CONSOLE-A
197	1.25	W	---	FRONT-B	REAR_CONSOLE-B
198	1.25	P	---	FRONT-B	REAR_CONSOLE-B
207	1.25	G	---	FRONT-B	REAR_CONSOLE-B
208	1.25	R	---	FRONT-B	REAR_CONSOLE-B
209	1.25	Y	---	FRONT-B	REAR_CONSOLE-B
234	1.25	L	---	FRONT-B	REAR_CONSOLE-B
235	1.25	Gy	---	FRONT-B	REAR_CONSOLE-B
236	1.25	Br	---	FRONT-B	REAR_CONSOLE-B
261	1.25	G	---	FRONT-A	REAR_CONSOLE-A
262	1.25	R	---	FRONT-A	REAR_CONSOLE-A
382	1.25	L	---	FRONT-A	REAR_CONSOLE-A
384	1.25	Lg	---	FRONT-A	REAR_CONSOLE-A
472	1.25	B	---	FRONT-A	EARTH-A
476	1.25	Y	---	FRONT-A	REAR_CONSOLE-A
794	1.25	B	---	FRONT-A	EARTH-A
796	1.25	O	---	FRONT-A	REAR_CONSOLE-A
802	1.25	Lg	---	FRONT-A	EARTH-A
803	1.25	B	AVSS	REAR_CONSOLE-A	EARTH-B
804	1.25	B	AVSS	REAR_CONSOLE-A	EARTH-B
805	1.25	B	AVSS	REAR_CONSOLE-A	EARTH-B

FRONT-B
YAZAKI)7123-7484-40

197	208	207	209
W	R	G	Y
236	234	235	198
Br	L	Gy	P

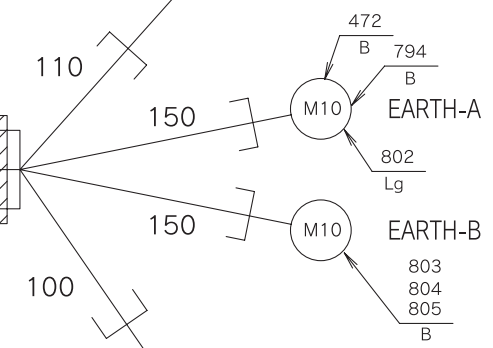
193	384	41	125
Sb	Lg	O	Sb
128	262	261	476
W	R	G	Y
138	382	44	122
Br	L	Gy	P
472	794	802	796
B	B	Lg	O

FRONT-A
SUMITOMO)6189-0715



REAR_CONSOLE-B
YAZAKI)7222-7484-40

209	207	208	197
Y	G	R	W
198	235	234	236
P	Gy	L	Br



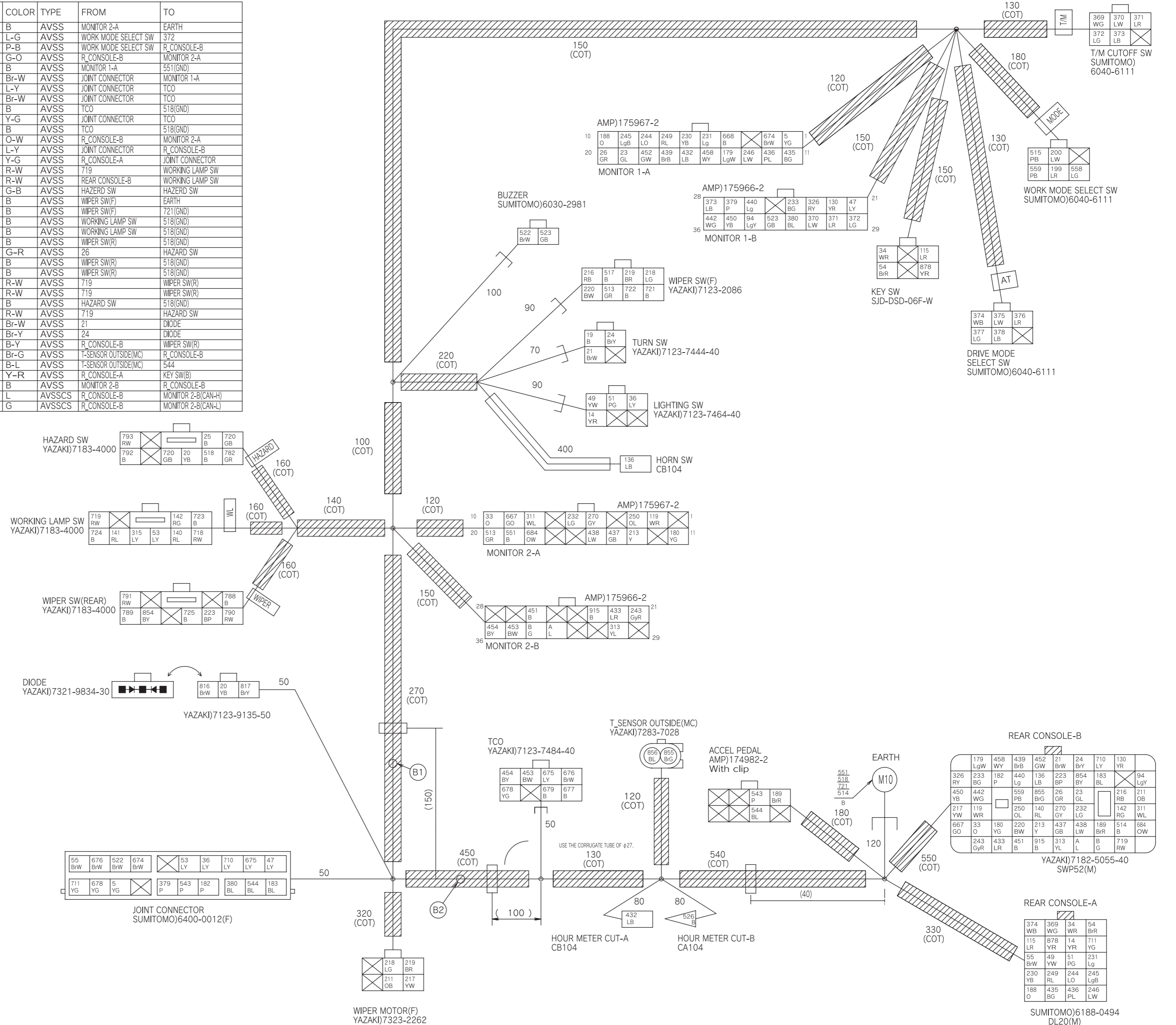
125	41	384	193
Sb	O	Lg	Sb
476	261	262	128
Y	G	R	W
122	44	382	138
P	Gy	L	Br
796	805	804	803
O	B	B	B

REAR_CONSOLE-A
SUMITOMO)6188-0495

ZW220/250 FRONT CONSOLE HARNESS1(EU STANDARD,GENERAL STANDARD) ZW310 FRONT CONSOLE HARNESS1

No.	SIZE	COLOR	TYPE	FROM	TO
5	0.5	Y-G	AVSS	JOINT CONNECTOR	MONITOR 1-A
14	1.25	Y-R	AVSS	R_CONSOLE-A	LIGHTING SW
19	0.5	B	AVSS	TURN SW	721(GND)
20	0.5	Y-B	AVSS	DIODE	HAZARD SW
21	0.5	Br-W	AVSS	TURN SW(LH)	R_CONSOLE-B
23	0.5	G-L	AVSS	R_CONSOLE-B	MONITOR 1-A
24	0.5	Br-Y	AVSS	TURN SW(RH)	R_CONSOLE-B
25	0.5	B	AVSS	HAZARD SW	518(GND)
26	0.5	G-R	AVSS	R_CONSOLE-B	MONITOR 1-A
33	0.5	O	AVSS	R_CONSOLE-B	MONITOR 2-A
34	0.5	W-R	AVSS	KEY SW(ACC)	R_CONSOLE-A
36	0.75	L-Y	AVSS	LIGHTING SW	JOINT CONNECTOR
47	0.5	L-Y	AVSS	JOINT CONNECTOR	MONITOR 1-B
49	0.5	Y-W	AVSS	LIGHTING SW	R_CONSOLE-A
51	0.5	P-G	AVSS	LIGHTING SW	R_CONSOLE-A
53	0.5	L-Y	AVSS	JOINT CONNECTOR	WORKING LAMP SW
54	1.25	Br-R	AVSS	KEY SW(ON)	R_CONSOLE-A
55	0.75	Br-W	AVSS	R_CONSOLE-A	JOINT CONNECTOR
94	0.5	Lg-Y	AVSS	MONITOR 1-B	R_CONSOLE-B
115	0.75	L-R	AVSS	KEY SW(START)	R_CONSOLE-A
119	0.5	W-R	AVSS	R_CONSOLE-B	MONITOR 2-A
130	0.5	Y-R	AVSS	R_CONSOLE-B	MONITOR 1-B
136	0.75	L-B	AVSS	R_CONSOLE-B	HORN SW
140	0.5	R-L	AVSS	WORKING LAMP SW	R_CONSOLE-B
141	0.5	R-L	AVSS	WORKING LAMP SW	140
142	0.5	R-G	AVSS	WORKING LAMP SW	R_CONSOLE-B
179	0.5	Lg-W	AVSS	MONITOR 1-A	R_CONSOLE-B
180	0.5	Y-G	AVSS	R_CONSOLE-B	MONITOR 2-A
182	0.75	P	AVSS	R_CONSOLE-B	JOINT CONNECTOR
183	0.75	B-L	AVSS	JOINT CONNECTOR	R_CONSOLE-B
188	0.5	O	AVSS	MONITOR 1-A	R_CONSOLE-A
189	0.5	Br-R	AVSS	ACCEL PEDAL(SIG)	R_CONSOLE-B
199	0.5	L-R	AVSS	WORK MODE SELECT SW	371
200	0.5	L-W	AVSS	WORK MODE SELECT SW	370
211	0.75	O-B	AVSS	R_CONSOLE-B	WIPER MOTOR(F)
213	0.5	Y	AVSS	R_CONSOLE-B	MONITOR 2-A
216	0.75	R-B	AVSS	R_CONSOLE-B	WIPER SW(F)
217	0.75	Y-W	AVSS	R_CONSOLE-B	WIPER MOTOR(F)
218	0.75	L-G	AVSS	WIPER MOTOR(F)LOW	WIPER SW(F)
219	0.75	B-R	AVSS	WIPER MOTOR(F)HI	WIPER SW(F)
220	0.5	B-W	AVSS	R_CONSOLE-B	WIPER SW(F)
223	0.5	B-P	AVSS	R_CONSOLE-B	WIPER SW(R)
230	0.5	Y-B	AVSS	R_CONSOLE-A	MONITOR 1-A
231	0.5	Lg	AVSS	MONITOR 1-A	R_CONSOLE-A
232	0.5	L-G	AVSS	R_CONSOLE-B	MONITOR 2-A
233	0.5	B-G	AVSS	R_CONSOLE-B	MONITOR 1-B
243	0.5	Gy-R	AVSS	MONITOR 2-B	R_CONSOLE-B
244	0.5	L-O	AVSS	MONITOR 1-A	R_CONSOLE-A
245	0.5	Lg-B	AVSS	MONITOR 1-A	R_CONSOLE-A
246	0.5	L-W	AVSS	MONITOR 1-A	R_CONSOLE-A
249	0.5	R-L	AVSS	MONITOR 1-A	R_CONSOLE-A
250	0.5	O-L	AVSS	R_CONSOLE-B	MONITOR 2-A
270	0.5	G-Y	AVSS	R_CONSOLE-B	MONITOR 2-A
311	0.5	W-L	AVSS	R_CONSOLE-B	MONITOR 2-A
313	0.5	Y-L	AVSS	MONITOR 2-B	R_CONSOLE-B
315	0.5	L-Y	AVSS	53	WORKING LAMP SW
326	0.5	R-Y	AVSS	R_CONSOLE-B	MONITOR 1-B
369	0.5	W-G	AVSS	T/M CUTOFF SW	R_CONSOLE-A
370	0.5	L-W	AVSS	MONITOR 1-B	T/M CUTOFF SW
371	0.5	L-R	AVSS	MONITOR 1-B	T/M CUTOFF SW
372	0.5	L-G	AVSS	MONITOR 1-B	T/M CUTOFF SW
373	0.5	L-B	AVSS	MONITOR 1-B	T/M CUTOFF SW
374	0.5	W-B	AVSS	DRIVE MODE SELECT SW	R_CONSOLE-A
375	0.5	L-W	AVSS	370	DRIVE MODE SELECT SW
376	0.5	L-R	AVSS	371	DRIVE MODE SELECT SW
377	0.5	L-G	AVSS	372	DRIVE MODE SELECT SW
378	0.5	L-B	AVSS	373	DRIVE MODE SELECT SW
379	0.5	P	AVSS	JOINT CONNECTOR	MONITOR 1-B
380	0.5	B-L	AVSS	MONITOR 1-B	JOINT CONNECTOR
432	0.5	L-B	AVSS	MONITOR 1-A	HOURLY METER CUT-A
433	0.5	L-R	AVSS	MONITOR 2-B	R_CONSOLE-B
435	0.5	B-G	AVSS	MONITOR 1-A	R_CONSOLE-A
436	0.5	P-L	AVSS	MONITOR 1-A	R_CONSOLE-A
437	0.5	G-B	AVSS	R_CONSOLE-B	MONITOR 2-A
438	0.5	L-W	AVSS	R_CONSOLE-B	MONITOR 2-A
439	0.5	Br-B	AVSS	MONITOR 1-A	R_CONSOLE-B
440	0.5	Lg	AVSS	MONITOR 1-B	R_CONSOLE-B
442	0.5	W-G	AVSS	MONITOR 1-B	R_CONSOLE-B
450	0.5	Y-B	AVSS	MONITOR 1-B	R_CONSOLE-B
451	0.5	B	AVSS	MONITOR 2-B	R_CONSOLE-B
452	0.5	G-W	AVSS	MONITOR 1-A	R_CONSOLE-B
453	0.5	B-W	AVSS	MONITOR 2-B	TCO
454	0.5	B-Y	AVSS	MONITOR 2-B	TCO
458	0.5	W-Y	AVSS	MONITOR 1-A	R_CONSOLE-B
513	0.5	G-R	AVSS	MONITOR 2-A	WIPER SW(F)
514	2	B	AVSS	EARTH	R_CONSOLE-B
515	0.5	P-B	AVSS	WORK MODE SELECT SW	559
517	0.5	B	AVSS	WIPER SW(F)	721(GND)
518	1.25	B	AVSS	HAZARD SW	EARTH
522	0.5	Br-W	AVSS	JOINT CONNECTOR	BUZZER(+)
523	0.5	G-B	AVSS	BUZZER(-)	MONITOR 1-B
526	0.5	B	AVSS	HOURLY METER CUT-B	551(GND)
543	0.5	P	AVSS	JOINT CONNECTOR	ACCEL PEDAL(+5V)
544	0.5	B-L	AVSS	ACCEL PEDAL(GND)	JOINT CONNECTOR

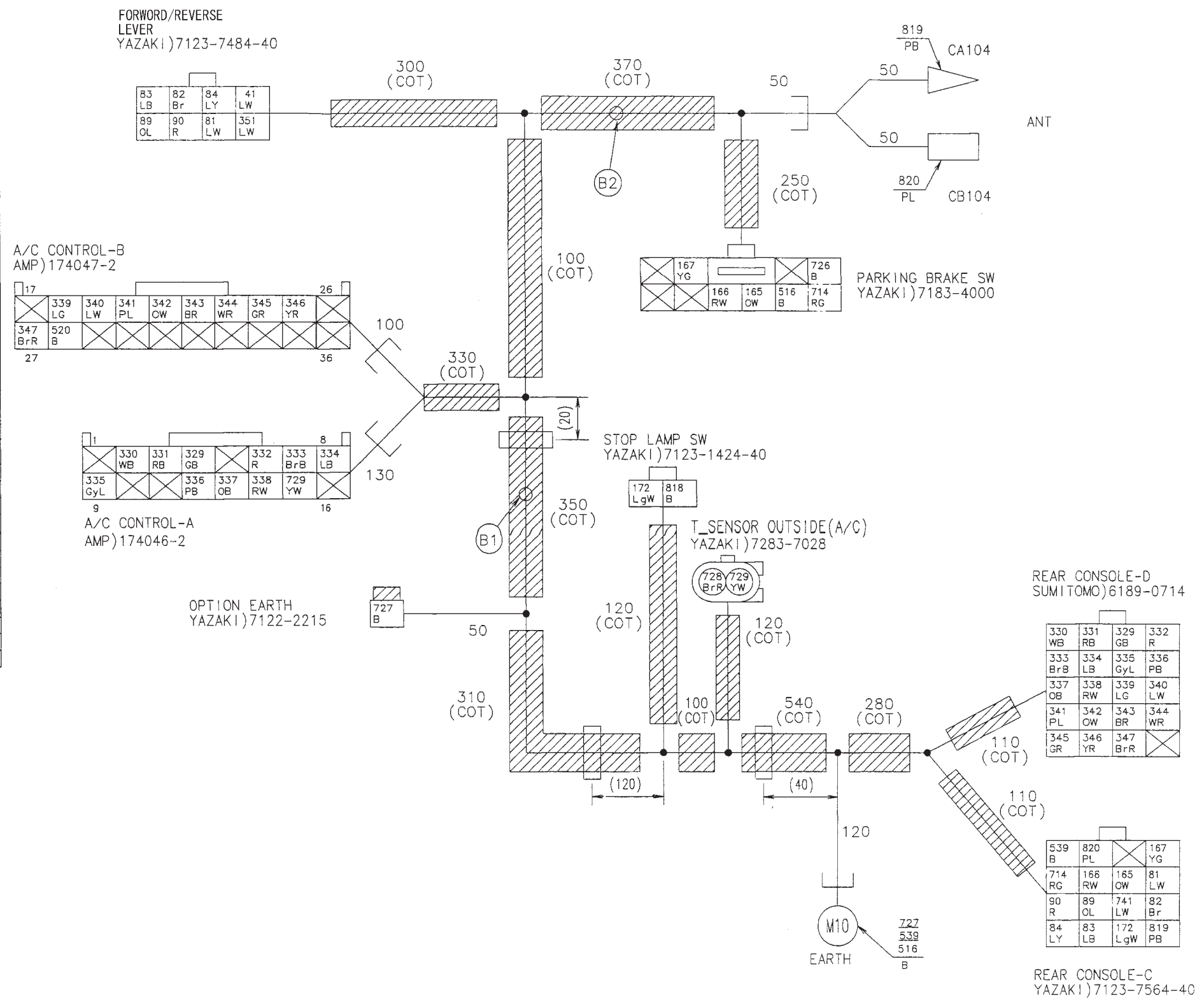
No.	SIZE	COLOR	TYPE	FROM	TO
551	0.5	B	AVSS	MONITOR 2-A	EARTH
558	0.5	L-G	AVSS	WORK MODE SELECT SW	372
559	0.5	P-B	AVSS	WORK MODE SELECT SW	R_CONSOLE-B
667	0.5	G-O	AVSS	R_CONSOLE-B	MONITOR 2-A
668	0.5	B	AVSS	MONITOR 1-A	551(GND)
674	0.5	Br-W	AVSS	JOINT CONNECTOR	MONITOR 1-A
675	0.5	L-Y	AVSS	JOINT CONNECTOR	TCO
676	0.5	Br-W	AVSS	JOINT CONNECTOR	TCO
677	0.5	B	AVSS	TCO	518(GND)
678	0.5	Y-G	AVSS	JOINT CONNECTOR	TCO
679	0.5	B	AVSS	TCO	518(GND)
684	0.5	O-W	AVSS	R_CONSOLE-B	MONITOR 2-A
710	0.75	L-Y	AVSS	JOINT CONNECTOR	R_CONSOLE-B
711	0.75	Y-G	AVSS	R_CONSOLE-A	JOINT CONNECTOR
718	0.5	R-W	AVSS	719	WORKING LAMP SW
719	0.5	R-W	AVSS	REAR CONSOLE-B	WORKING LAMP SW
720	0.5	G-B	AVSS	HAZARD SW	HAZARD SW
721	1.25	B	AVSS	WIPER SW(F)	EARTH
722	0.5	B	AVSS	WIPER SW(F)	721(GND)
723	0.5	B	AVSS	WORKING LAMP SW	518(GND)
724	0.5	B	AVSS	WORKING LAMP SW	518(GND)
725	0.5	B	AVSS	WIPER SW(R)	518(GND)
782	0.5	G-R	AVSS	26	HAZARD SW
788	0.5	B	AVSS	WIPER SW(R)	518(GND)
789	0.5	B	AVSS	WIPER SW(R)	518(GND)
790	0.5	R-W	AVSS	719	WIPER SW(R)
791	0.5	R-W	AVSS	719	WIPER SW(R)
792	0.5	B	AVSS	HAZARD SW	518(GND)
793	0.5	R-W	AVSS	719	HAZARD SW
816	0.5	Br-W	AVSS	21	DIODE
817	0.5	Br-Y	AVSS	24	DIODE
854	0.5	B-Y	AVSS	R_CONSOLE-B	WIPER SW(R)
855	0.5	Br-G	AVSS	T-SENSOR OUTSIDE(MC)	R_CONSOLE-B
856	0.5	B-L	AVSS	T-SENSOR OUTSIDE(MC)	544
878	1.25	Y-R	AVSS	R_CONSOLE-A	KEY SW(B)
915	0.5	B	AVSS	MONITOR 2-A	R_CONSOLE-B
A	0.5	L	AVSSCS	R_CONSOLE-B	MONITOR 2-B(CAN-H)
B	0.5	G	AVSSCS	R_CONSOLE-B	MONITOR 2-B(CAN-L)



ZW220/250 FRONT CONSOLE HARNESS2(EU STANDARD,GENERAL STANDARD)

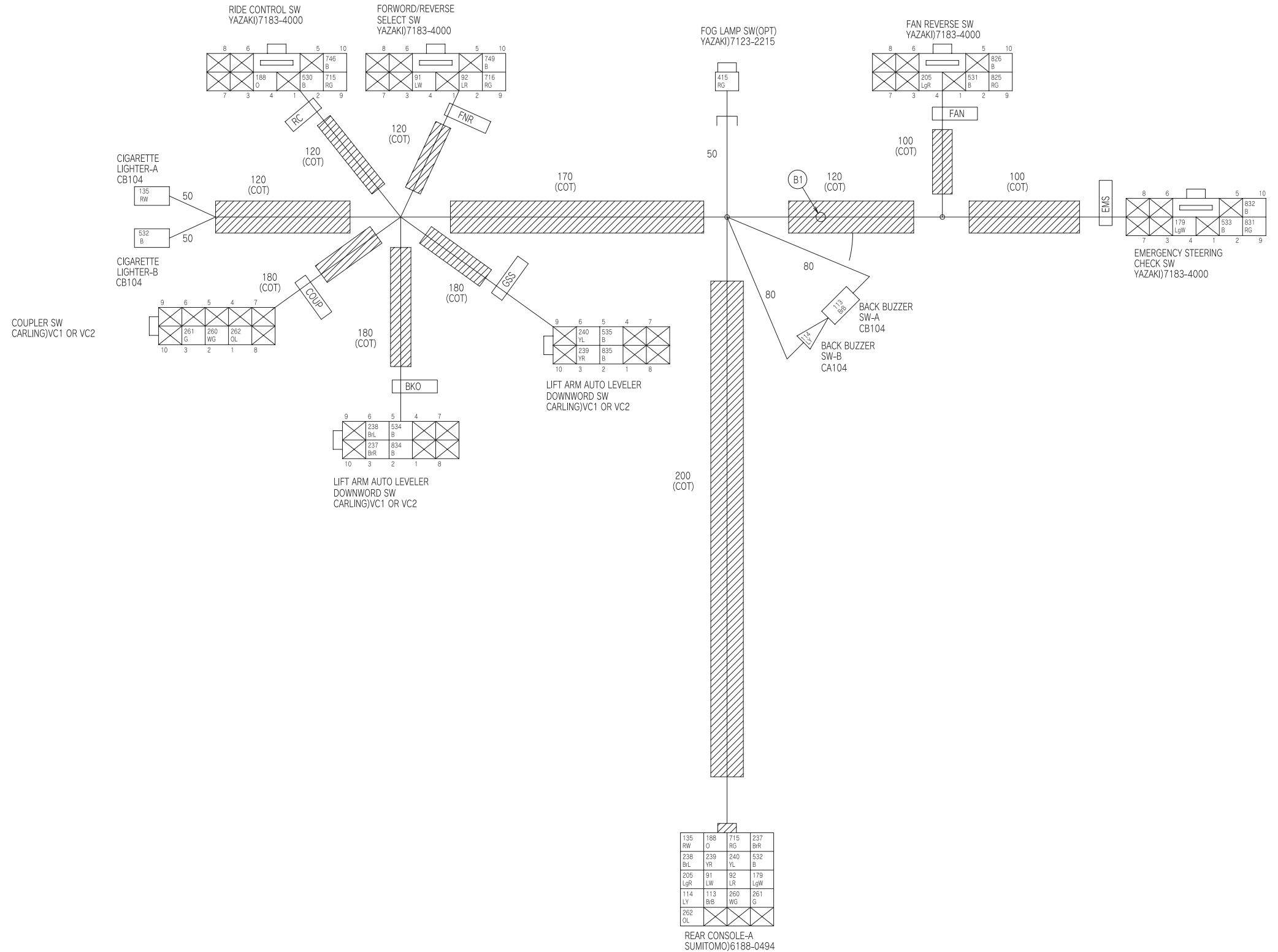
ZW310 FRONT CONSOLE HARNESS2

No.	SIZE	COLOR	TYPE	FROM	TO
81	0.5	L-W	AVSS	R_CONSOLE-C	FORWORD/REVERSE LEVER
82	0.5	Br	AVSS	FORWORD/REVERSE LEVER(N)	R_CONSOLE-C
83	0.5	L-B	AVSS	FORWORD/REVERSE LEVER(F)	R_CONSOLE-C
84	0.5	L-Y	AVSS	FORWORD/REVERSE LEVER(R)	R_CONSOLE-C
89	0.5	O-L	AVSS	FORWORD/REVERSE LEVER(B)	R_CONSOLE-C
90	0.5	R	AVSS	FORWORD/REVERSE LEVER(C)	R_CONSOLE-C
165	0.5	O-W	AVSS	R_CONSOLE-C	PARKING BRAKE SW
166	0.5	R-W	AVSS	R_CONSOLE-C	PARKING BRAKE SW
167	0.5	Y-G	AVSS	PARKING BRAKE SW	R_CONSOLE-C
172	0.5	Lg-W	AVSS	R_CONSOLE-C	STOP LAMP SW
329	0.5	G-B	AVSS	A/C CONTROL-A	R_CONSOLE-D
330	0.5	W-B	AVSS	R_CONSOLE-D	A/C CONTROL-A
331	0.5	R-B	AVSS	A/C CONTROL-A	R_CONSOLE-D
332	0.5	R	AVSS	R_CONSOLE-D	A/C CONTROL-A
333	0.5	Br-B	AVSS	A/C CONTROL-A	R_CONSOLE-D
334	0.5	L-B	AVSS	A/C CONTROL-A	R_CONSOLE-D
335	0.5	Gy-L	AVSS	R_CONSOLE-D	A/C CONTROL-A
336	0.5	P-B	AVSS	A/C CONTROL-A	R_CONSOLE-D
337	0.5	O-B	AVSS	A/C CONTROL-A	R_CONSOLE-D
338	0.5	R-W	AVSS	A/C CONTROL-A	R_CONSOLE-D
339	0.5	L-G	AVSS	R_CONSOLE-D	A/C CONTROL-B
340	0.5	L-W	AVSS	R_CONSOLE-D	A/C CONTROL-B
341	0.5	P-L	AVSS	A/C CONTROL-B	R_CONSOLE-D
342	0.5	O-W	AVSS	R_CONSOLE-D	A/C CONTROL-B
343	0.5	B-R	AVSS	R_CONSOLE-D	A/C CONTROL-B
344	0.5	W-R	AVSS	R_CONSOLE-D	A/C CONTROL-B
345	0.5	G-R	AVSS	A/C CONTROL-B	R_CONSOLE-D
346	0.5	Y-R	AVSS	R_CONSOLE-D	A/C CONTROL-B
347	0.5	Br-R	AVSS	R_CONSOLE-D	A/C CONTROL-B
351	0.5	L-W	AVSS	FORWORD/REVERSE LEVER(COM)	81
516	1.25	B	AVSS	PARKING BRAKE SW	EARTH
520	0.5	B	AVSS	A/C CONTROL-B	516(GND)
539	2	B	AVSS	EARTH	R_CONSOLE-C
714	0.5	R-G	AVSS	R_CONSOLE-C	PARKING BRAKE SW
726	1.25	B	AVSS	PARKING BRAKE SW	516(GND)
727	1.25	B	AVSS	OPTION EARTH	EARTH
728	0.5	Br-R	AVSS	T_SENSOR OUTSIDE	347
729	0.5	Y-W	AVSS	A/C CONTROL-A	T_SENSOR OUTSIDE
741	0.5	L-W	AVSS	R_CONSOLE-C	FORWORD/REVERSE LEVER(COM1)
818	0.5	B	AVSS	STOP LAMP SW	516(GND)
819	0.5	P-B	AVSS	ANT	R_CONSOLE-C
820	0.5	P-L	AVSS	ANT	R_CONSOLE-C



ZW220/250 SIDE CONSOLE HARNESS1(EU STANDARD,GENERAL STANDARD) ZW310 SIDE CONSOLE HARNESS1

No.	SIZE	COLOR	TYPE	FROM	TO
91	0.5	L-W	AVSS	REAR CONSOLE-A	FORWARD/REVERSE SELECT SW
92	0.5	L-R	AVSS	FORWARD/REVERSE SELECT SW	REAR CONSOLE-A
113	0.5	Bf-B	AVSS	REAR CONSOLE-A	BACK BUZZER SW-A
114	0.5	L-Y	AVSS	BACK BUZZER SW-B	REAR CONSOLE-A
135	1.25	R-W	AVSS	REAR CONSOLE-A	CIGARETTE LIGHTER-A
179	0.5	Lg-W	AVSS	REAR CONSOLE-A	EMERGENCY STEERING CHECK SW
188	0.5	O	AVSS	REAR CONSOLE-A	RIDE CONTROL SW
205	0.5	Lg-R	AVSS	REAR CONSOLE-A	FAN REVERSE SW
237	0.5	Bf-R	AVSS	REAR CONSOLE-A	LIFT ARM AUTO LEVELER UPWARD SET SW
238	0.5	Bf-L	AVSS	REAR CONSOLE-A	LIFT ARM AUTO LEVELER DOWNWARD SET SW
239	0.5	Y-R	AVSS	REAR CONSOLE-A	LIFT ARM AUTO LEVELER DOWNWARD SET SW
240	0.5	Y-L	AVSS	REAR CONSOLE-A	LIFT ARM AUTO LEVELER DOWNWARD SET SW
260	0.5	W-G	AVSS	REAR CONSOLE-A	COUPLER SW
261	0.5	G	AVSS	COUPLER SW(PUSH)	REAR CONSOLE-A
262	0.5	O-L	AVSS	COUPLER SW(PULL)	REAR CONSOLE-A
415	0.5	R-G	AVSS	715	FOG LAMP SW(OPT)
530	0.5	B	AVSS	RIDE CONTROL SW	532(GND)
531	0.5	B	AVSS	FAN REVERSE SW	532(GND)
532	1.25	B	AVSS	CIGARETTE LIGHTER-B	REAR CONSOLE-A
533	0.5	B	AVSS	EMERGENCY STEERING CHECK SW	532(GND)
534	0.5	B	AVSS	LIFT ARM AUTO LEVELER UPWARD SET SW	532(GND)
535	0.5	B	AVSS	LIFT ARM AUTO LEVELER DOWNWARD SET SW	532(GND)
715	0.5	R-G	AVSS	REAR CONSOLE-A	RIDE CONTROL SW
716	0.5	R-G	AVSS	715	FORWARD/REVERSE SELECT SW
746	0.5	B	AVSS	RIDE CONTROL SW	532(GND)
749	0.5	B	AVSS	FORWARD/REVERSE SELECT SW	532(GND)
825	0.5	R-G	AVSS	715	FAN REVERSE SW
826	0.5	B	AVSS	FAN REVERSE SW	532(GND)
831	0.5	R-G	AVSS	715	EMERGENCY STEERING CHECK SW
832	0.5	B	AVSS	EMERGENCY STEERING CHECK SW	532(GND)
834	0.5	B	AVSS	LIFT ARM AUTO LEVELER UPWARD SET SW	532(GND)
835	0.5	B	AVSS	LIFT ARM AUTO LEVELER DOWNWARD SET SW	532(GND)

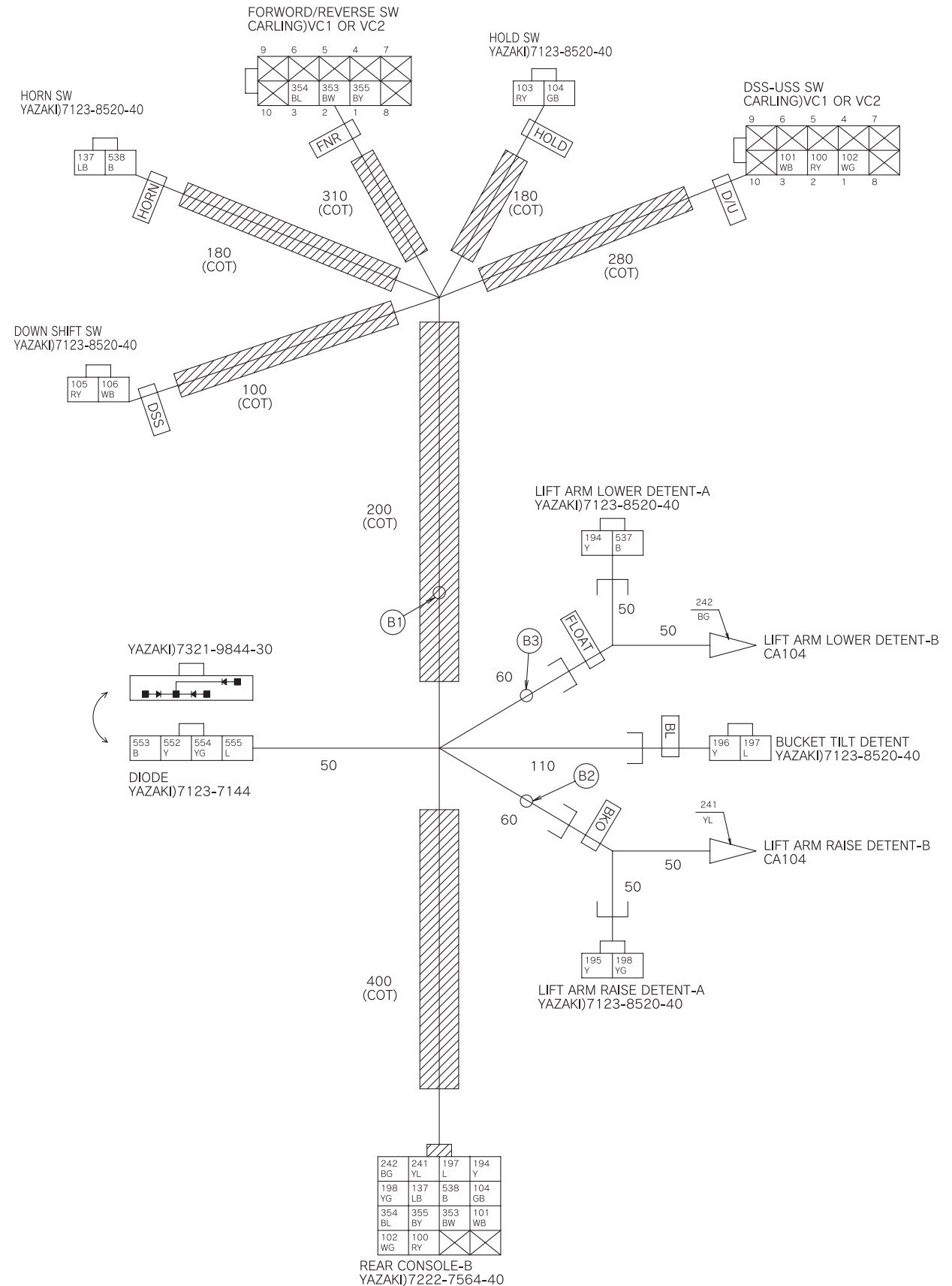


ZW220/250 SIDE CONSOLE HARNESS2

(EU STANDARD,GENERAL STANDARD)(FOR STANDARD TWO LEVER PILOT VALVE)

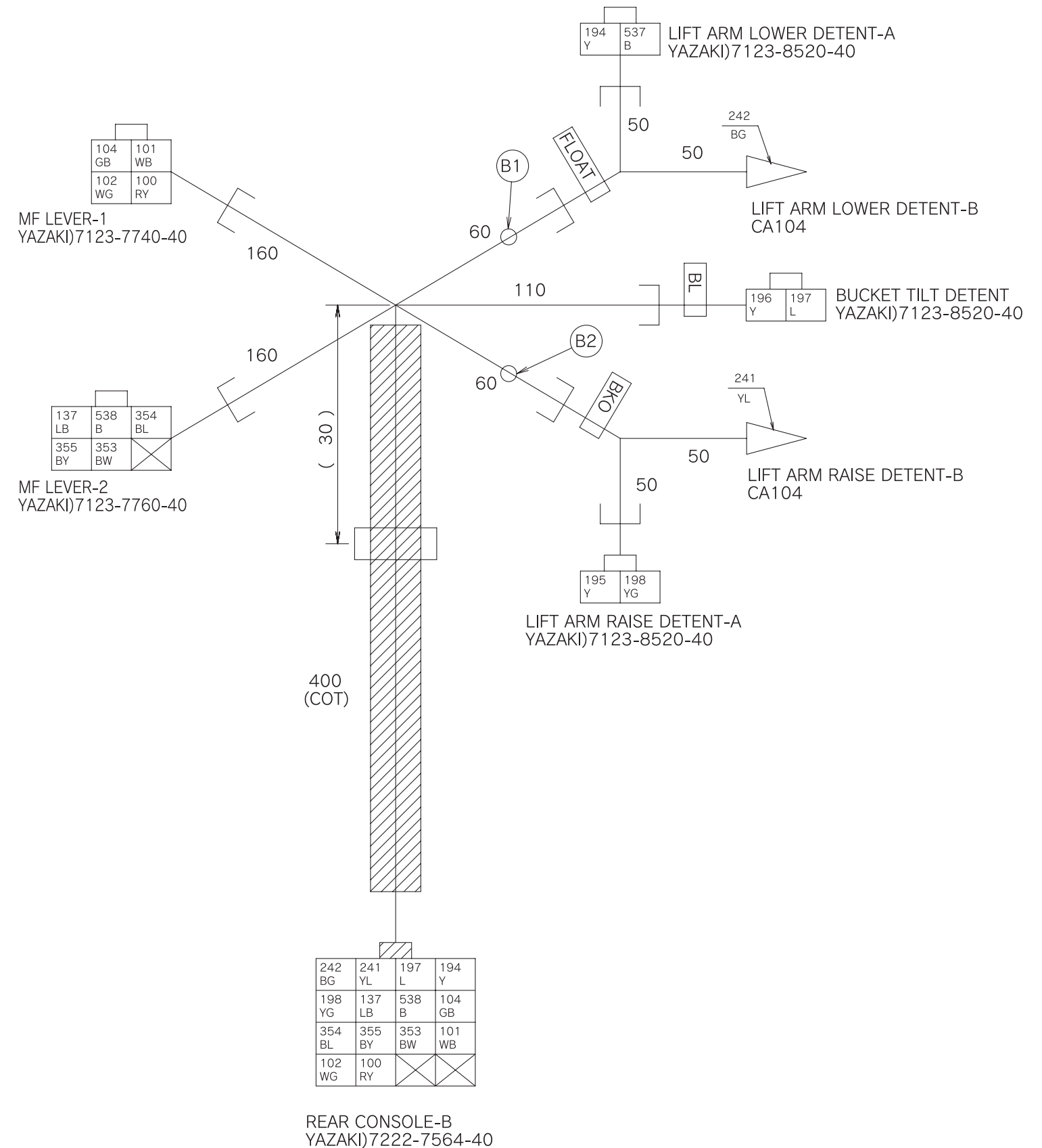
ZW310 SIDE CONSOLE HARNESS2(FOR STANDARD TWO LEVER PILOT VALVE)

No.	SIZE	COLOR	TYPE	FROM	TO
100	0.5	R-Y	AVSS	REAR CONSOLE-B	DSS-USS SW
101	0.5	W-B	AVSS	DSS-USS SW(DSS)	REAR CONSOLE-B
102	0.5	W-G	AVSS	DSS-USS SW(USS)	REAR CONSOLE-B
103	0.5	R-Y	AVSS	100	HOLD SW
104	0.5	G-B	AVSS	HOLD SW	REAR CONSOLE-B
105	0.5	R-Y	AVSS	100	DOWN SHIFT SW
106	0.5	W-B	AVSS	DOWN SHIFT SW	101
137	0.5	L-B	AVSS	REAR CONSOLE-B	HORN SW
194	0.5	Y	AVSS	REAR CONSOLE-B	LIFT ARM LOWER-A
195	0.5	Y	AVSS	194	LIFT ARM RAISE-A
196	0.5	Y	AVSS	194	BUCKET TILT
197	0.5	L	AVSS	BUCKET TILT	REAR CONSOLE-B
198	0.5	Y-G	AVSS	LIFT ARM RAISE-A	REAR CONSOLE-B
241	0.5	Y-L	AVSS	LIFT ARM RAISE-B	REAR CONSOLE-B
242	0.5	B-G	AVSS	LIFT ARM LOWER-B	REAR CONSOLE-B
353	0.5	B-W	AVSS	REAR CONSOLE-B	FORWARD/REVERSE SW
354	0.5	B-L	AVSS	FORWARD/REVERSE SW(F)	REAR CONSOLE-B
355	0.5	B-Y	AVSS	FORWARD/REVERSE SW(R)	REAR CONSOLE-B
537	0.5	B	AVSS	LIFT ARM LOWER-A	538(GND)
538	0.75	B	AVSS	HORN SW	REAR CONSOLE-B
552	0.5	Y	AVSS	DIODE	194
553	0.5	B	AVSS	538(GND)	DIODE
554	0.5	Y-G	AVSS	198	DIODE
555	0.5	L	AVSS	197	DIODE



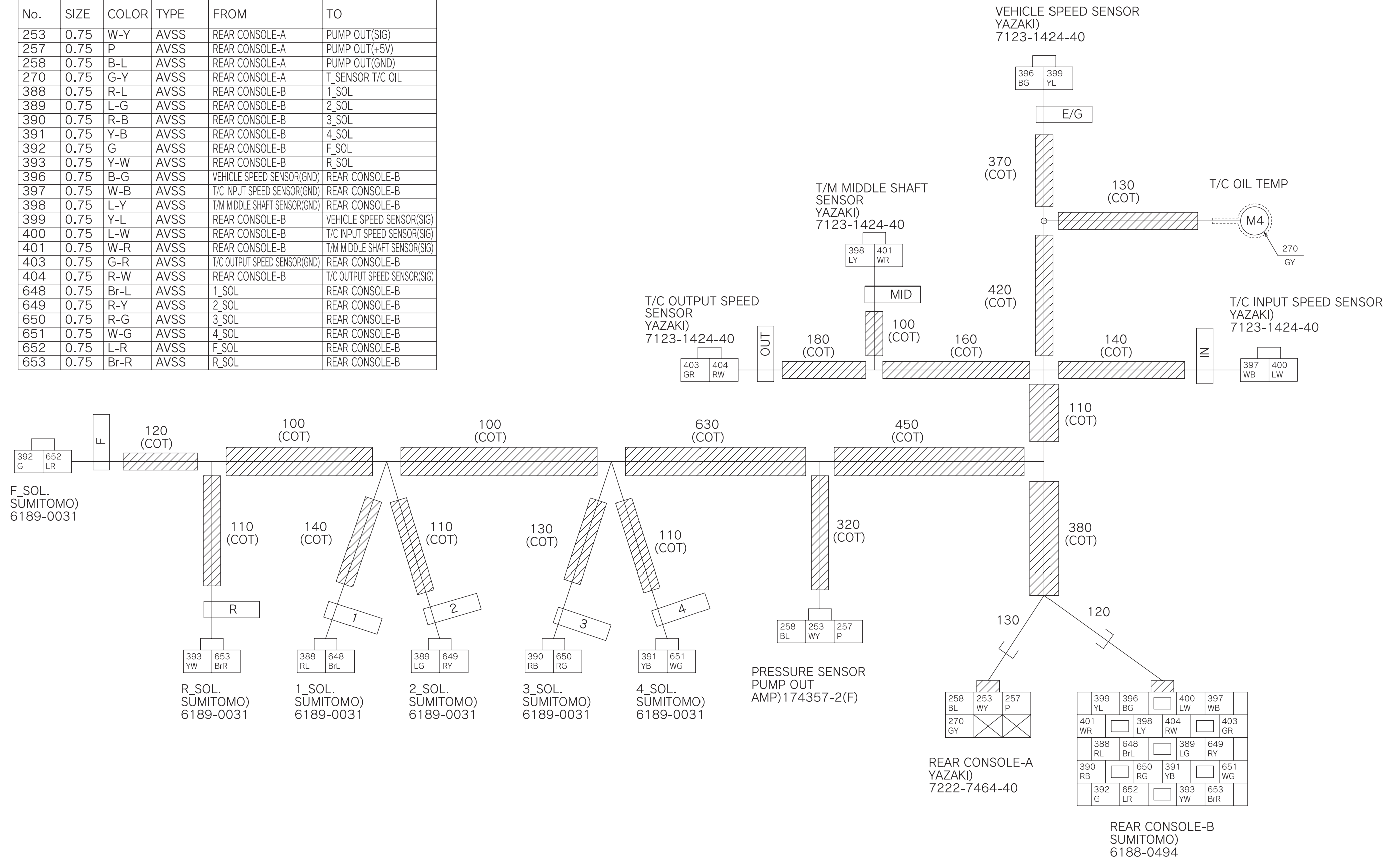
ZW220/250 SIDE CONSOLE HARNESS3 (EU STANDARD,GENERAL STANDARD)(FOR OPTIONAL JOY STICK LEVER PILOT VALVE) ZW310 SIDE CONSOLE HARNESS3(FOR OPTIONAL JOY STICK LEVER PILOT VALVE)

No.	SIZE	COLOR	TYPE	FROM	TO
100	0.5	R-Y	AVSS	REAR CONSOLE-B	MF LEVER-1
101	0.5	W-B	AVSS	MF LEVER-1(DSS)	REAR CONSOLE-B
102	0.5	W-G	AVSS	MF LEVER-1(USS)	REAR CONSOLE-B
104	0.5	G-B	AVSS	MF LEVER-1(HOLD)	REAR CONSOLE-B
137	0.5	L-B	AVSS	REAR CONSOLE-B	MF LEVER-2(HORN)
194	0.5	Y	AVSS	REAR CONSOLE-B	LIFT ARM LOWER-A
195	0.5	Y	AVSS	194	LIFT ARM RAISE-A
196	0.5	Y	AVSS	194	BACKET TILT
197	0.5	L	AVSS	BACKET TILT	REAR CONSOLE-B
198	0.5	Y-G	AVSS	LIFT ARM RAISE-A	REAR CONSOLE-B
241	0.5	Y-L	AVSS	LIFT ARM RAISE-B	REAR CONSOLE-B
242	0.5	B-G	AVSS	LIFT ARM LOWER-B	REAR CONSOLE-B
353	0.5	B-W	AVSS	REAR CONSOLE-B	MF LEVER-2
354	0.5	B-L	AVSS	MF LEVER-2(F)	REAR CONSOLE-B
355	0.5	B-Y	AVSS	MF LEVER-2(R)	REAR CONSOLE-B
537	0.5	B	AVSS	LIFT ARM LOWER-A	538(GND)
538	0.75	B	AVSS	MF LEVER-2(HORN)	REAR CONSOLE-B

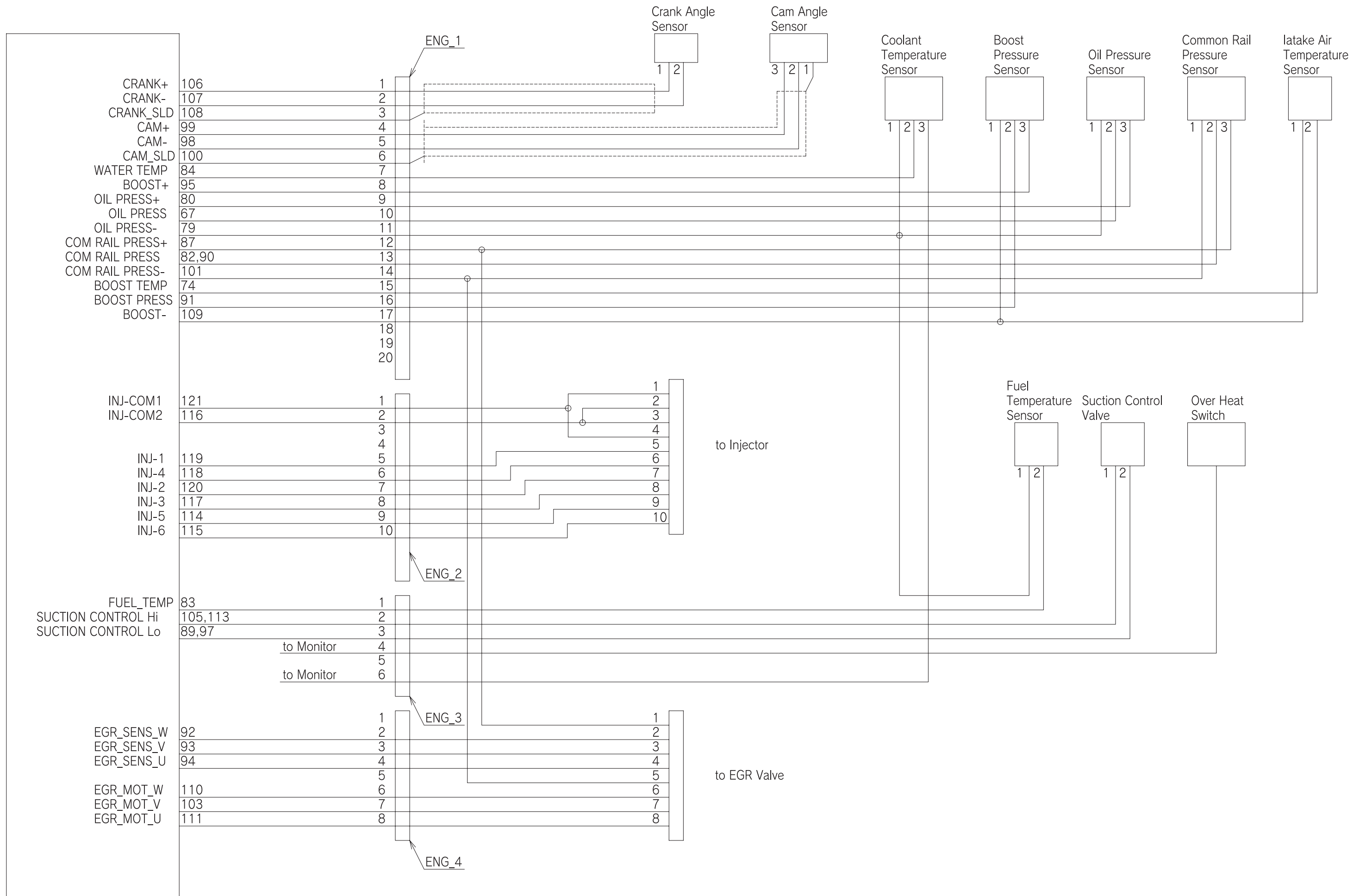


ZW220/250 TRANSMISSION HARNESS(GENERAL STANDARD) ZW310 TRANSMISSION HARNESS

No.	SIZE	COLOR	TYPE	FROM	TO
253	0.75	W-Y	AVSS	REAR CONSOLE-A	PUMP OUT(SIG)
257	0.75	P	AVSS	REAR CONSOLE-A	PUMP OUT(+5V)
258	0.75	B-L	AVSS	REAR CONSOLE-A	PUMP OUT(GND)
270	0.75	G-Y	AVSS	REAR CONSOLE-A	T_SENSOR T/C OIL
388	0.75	R-L	AVSS	REAR CONSOLE-B	1_SOL
389	0.75	L-G	AVSS	REAR CONSOLE-B	2_SOL
390	0.75	R-B	AVSS	REAR CONSOLE-B	3_SOL
391	0.75	Y-B	AVSS	REAR CONSOLE-B	4_SOL
392	0.75	G	AVSS	REAR CONSOLE-B	F_SOL
393	0.75	Y-W	AVSS	REAR CONSOLE-B	R_SOL
396	0.75	B-G	AVSS	VEHICLE SPEED SENSOR(GND)	REAR CONSOLE-B
397	0.75	W-B	AVSS	T/C INPUT SPEED SENSOR(GND)	REAR CONSOLE-B
398	0.75	L-Y	AVSS	T/M MIDDLE SHAFT SENSOR(GND)	REAR CONSOLE-B
399	0.75	Y-L	AVSS	REAR CONSOLE-B	VEHICLE SPEED SENSOR(SIG)
400	0.75	L-W	AVSS	REAR CONSOLE-B	T/C INPUT SPEED SENSOR(SIG)
401	0.75	W-R	AVSS	REAR CONSOLE-B	T/M MIDDLE SHAFT SENSOR(SIG)
403	0.75	G-R	AVSS	T/C OUTPUT SPEED SENSOR(GND)	REAR CONSOLE-B
404	0.75	R-W	AVSS	REAR CONSOLE-B	T/C OUTPUT SPEED SENSOR(SIG)
648	0.75	Br-L	AVSS	1_SOL	REAR CONSOLE-B
649	0.75	R-Y	AVSS	2_SOL	REAR CONSOLE-B
650	0.75	R-G	AVSS	3_SOL	REAR CONSOLE-B
651	0.75	L-G	AVSS	4_SOL	REAR CONSOLE-B
652	0.75	L-R	AVSS	F_SOL	REAR CONSOLE-B
653	0.75	Br-R	AVSS	R_SOL	REAR CONSOLE-B

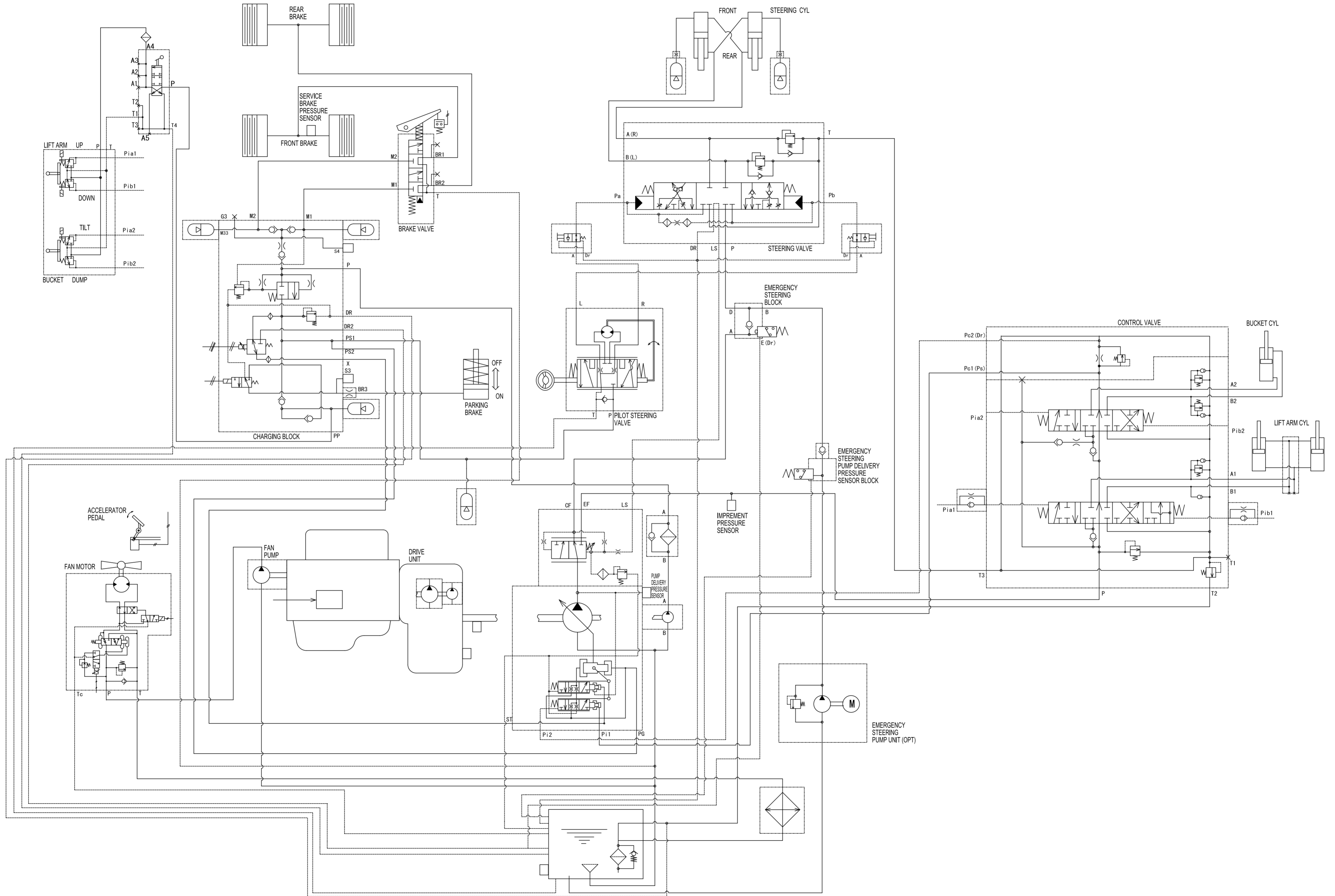


ZW220/250 ENGINE HARNESS(EU STANDARD,GENERAL STANDARD)



ZW220 HYDRAULIC CIRCUIT DIAGRAM (GENERAL STANDARD)

NOTE : Refer to the performance standard table in the Technical Manual for the set pressure of each relief valve.



ZW250 HYDRAULIC CIRCUIT DIAGRAM (GENERAL STANDARD)

NOTE : Refer to the performance standard table in the Technical Manual for the set pressure of each relief valve.

