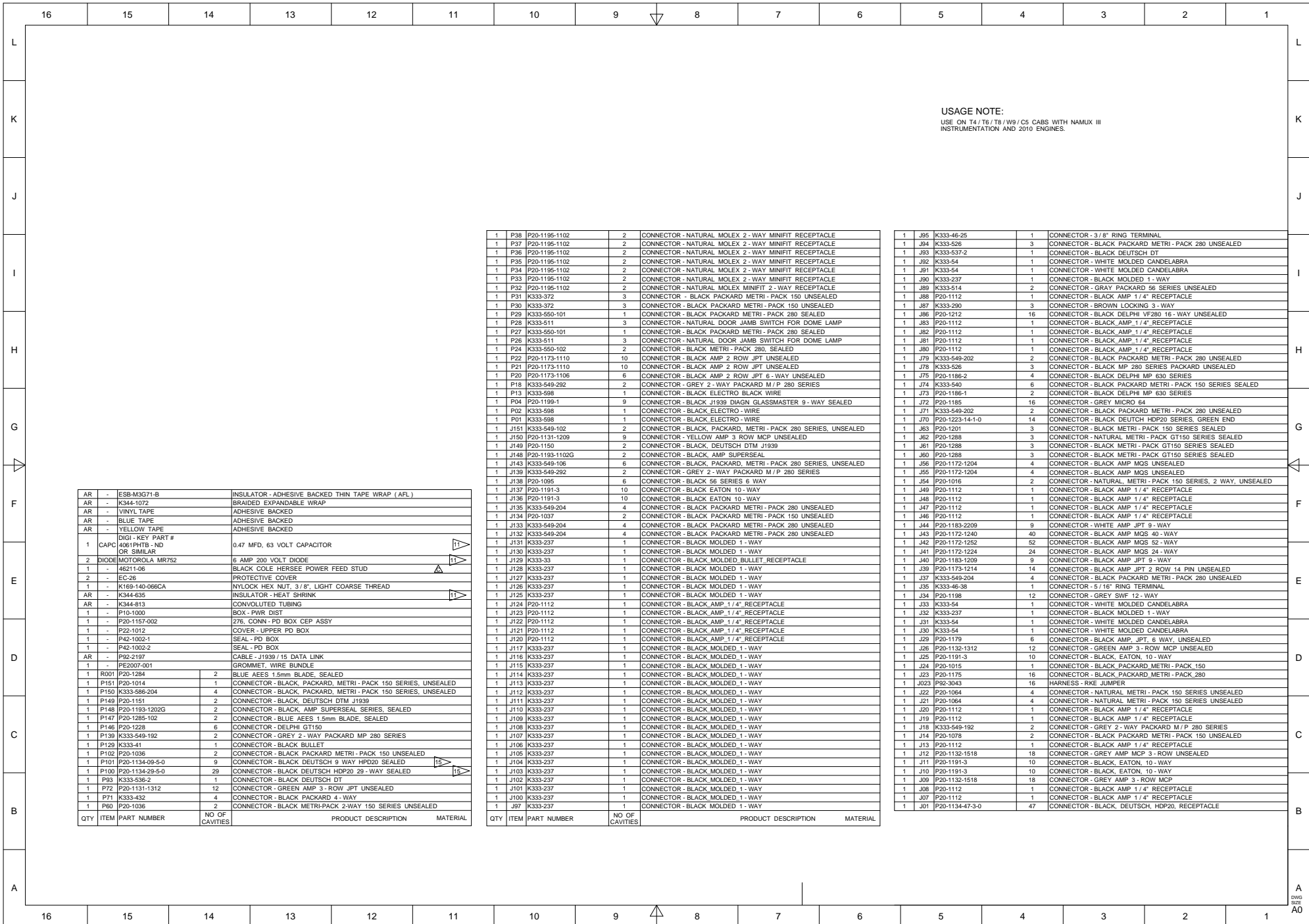


© 2009 PACCAR Inc - All Rights Reserved - The information contained in this drawing is proprietary to PACCAR. Reproduction, in whole or in part, by any means is strictly prohibited without prior written authorization from PACCAR Inc.



USAGE NOTE:
USE ON T4/T6/T8/W9/CS CABS WITH NAMUX III INSTRUMENTATION AND 2010 ENIGHS

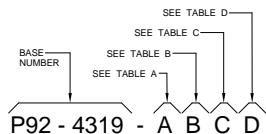
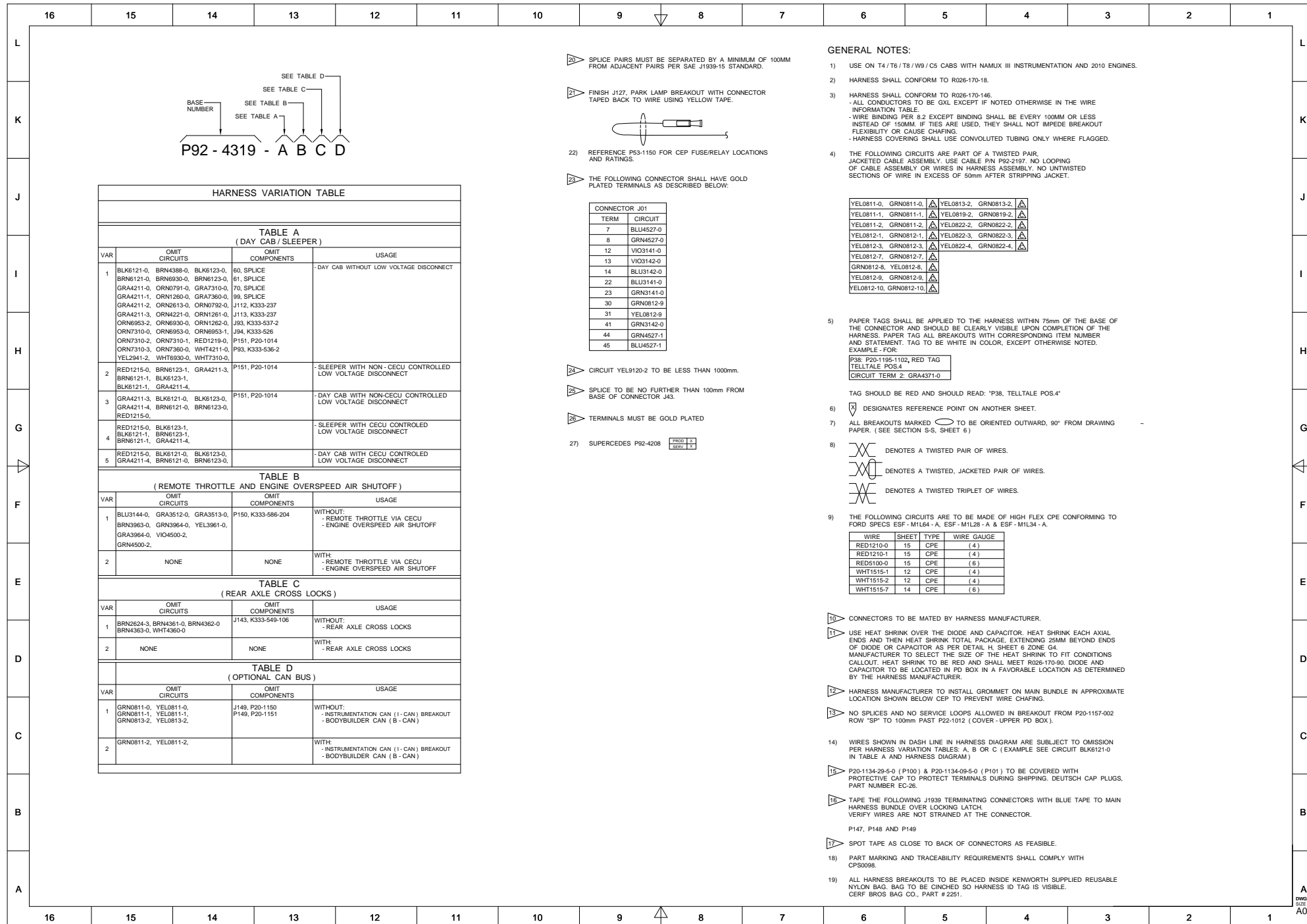
QTY	ITEM	PART NUMBER	NO OF CAVITIES	PRODUCT DESCRIPTION	MATERIAL
1	P38	P20-1195-1102	2	CONNECTOR - NATURAL MOLEX 2 - WAY MINIFIT RECEPTACLE	
1	P37	P20-1195-1102	2	CONNECTOR - NATURAL MOLEX 2 - WAY MINIFIT RECEPTACLE	
1	P36	P20-1195-1102	2	CONNECTOR - NATURAL MOLEX 2 - WAY MINIFIT RECEPTACLE	
1	P35	P20-1195-1102	2	CONNECTOR - NATURAL MOLEX 2 - WAY MINIFIT RECEPTACLE	
1	P34	P20-1195-1102	2	CONNECTOR - NATURAL MOLEX 2 - WAY MINIFIT RECEPTACLE	
1	P33	P20-1195-1102	2	CONNECTOR - NATURAL MOLEX 2 - WAY MINIFIT RECEPTACLE	
1	P32	P20-1195-1102	2	CONNECTOR - NATURAL MOLEX 2 - WAY RECEPTACLE	
1	P31	K333-372	3	CONNECTOR - BLACK PACKARD METRI - PACK 150 UNSEALED	
1	P30	K333-372	3	CONNECTOR - BLACK PACKARD METRI - PACK 150 UNSEALED	
1	P29	K333-550-101	1	CONNECTOR - BLACK PACKARD METRI - PACK 280 SEALED	
1	P28	K333-511	3	CONNECTOR - NATURAL DOOR JAMB SWITCH FOR DOME LAMP	
1	P27	K333-550-101	1	CONNECTOR - BLACK PACKARD METRI - PACK 280 SEALED	
1	P26	K333-511	3	CONNECTOR - NATURAL DOOR JAMB SWITCH FOR DOME LAMP	
1	P24	K333-550-102	2	CONNECTOR - BLACK METRI - PACK 280, SEALED	
1	P22	P20-1173-1110	10	CONNECTOR - BLACK AMP 2 ROW JPT UNSEALED	
1	P21	P20-1173-1110	10	CONNECTOR - BLACK AMP 2 ROW JPT UNSEALED	
1	P20	P20-1173-1106	8	CONNECTOR - BLACK AMP 2 ROW JPT 6 - WAY UNSEALED	
1	P18	K333-549-292	2	CONNECTOR - GREY 2 - WAY PACKARD M/P 280 SERIES	
1	P13	K333-598	1	CONNECTOR - BLACK ELECTRO BLACK WIRE	
1	P04	P20-1199-1	9	CONNECTOR - BLACK J1939 DIAGN GLASSMASTER 9 - WAY SEALED	
1	P02	K333-598	1	CONNECTOR - BLACK ELECTRO - WIRE	
1	P01	K333-598	1	CONNECTOR - BLACK ELECTRO - WIRE	
1	J151	K333-549-102	2	CONNECTOR - BLACK, PACKARD, METRI - PACK 280 SERIES, UNSEALED	
1	J150	P20-1131-1209	9	CONNECTOR - YELLOW AMP 3 ROW MCP UNSEALED	
1	J149	P20-1150	2	CONNECTOR - BLACK, DEUTSCH DTM J1939	
1	J148	P20-1193-1102G	2	CONNECTOR - BLACK, AMP SUPERSEAL	
1	J143	K333-549-106	6	CONNECTOR - BLACK, PACKARD, METRI - PACK 280 SERIES, UNSEALED	
1	J139	K333-549-292	2	CONNECTOR - GREY 2 - WAY PACKARD M/P 280 SERIES	
1	J138	P20-1095	6	CONNECTOR - BLACK 56 SERIES 6 WAY	
1	J137	P20-1191-3	10	CONNECTOR - BLACK EATON 10 - WAY	
1	J136	P20-1191-3	10	CONNECTOR - BLACK EATON 10 - WAY	
1	J135	K333-549-204	4	CONNECTOR - BLACK PACKARD METRI - PACK 280 UNSEALED	
1	J134	P20-1037	2	CONNECTOR - BLACK PACKARD METRI - PACK 150 UNSEALED	
1	J133	K333-549-204	4	CONNECTOR - BLACK PACKARD METRI - PACK 280 UNSEALED	
1	J132	K333-549-204	4	CONNECTOR - BLACK PACKARD METRI - PACK 280 UNSEALED	
1	J131	K333-237	1	CONNECTOR - BLACK MOLDED 1 - WAY	
1	J130	K333-237	1	CONNECTOR - BLACK MOLDED 1 - WAY	
1	J129	K333-33	1	CONNECTOR - BLACK MOLDED BULLET RECEPTACLE	
1	J128	K333-237	1	CONNECTOR - BLACK MOLDED 1 - WAY	
1	J127	K333-237	1	CONNECTOR - BLACK MOLDED 1 - WAY	
1	J126	K333-237	1	CONNECTOR - BLACK MOLDED 1 - WAY	
1	J125	K333-237	1	CONNECTOR - BLACK MOLDED 1 - WAY	
1	J124	P20-1112	1	CONNECTOR - BLACK AMP 1/4" RECEPTACLE	
1	J123	P20-1112	1	CONNECTOR - BLACK AMP 1/4" RECEPTACLE	
1	J122	P20-1112	1	CONNECTOR - BLACK AMP 1/4" RECEPTACLE	
1	J121	P20-1112	1	CONNECTOR - BLACK AMP 1/4" RECEPTACLE	
1	J120	P20-1112	1	CONNECTOR - BLACK AMP 1/4" RECEPTACLE	
1	J117	K333-237	1	CONNECTOR - BLACK MOLDED 1 - WAY	
1	J116	K333-237	1	CONNECTOR - BLACK MOLDED 1 - WAY	
1	J115	K333-237	1	CONNECTOR - BLACK MOLDED 1 - WAY	
1	J114	K333-237	1	CONNECTOR - BLACK MOLDED 1 - WAY	
1	J113	K333-237	1	CONNECTOR - BLACK MOLDED 1 - WAY	
1	J112	K333-237	1	CONNECTOR - BLACK MOLDED 1 - WAY	
1	J111	K333-237	1	CONNECTOR - BLACK MOLDED 1 - WAY	
1	J104	K333-237	1	CONNECTOR - BLACK MOLDED 1 - WAY	
1	J103	K333-237	1	CONNECTOR - BLACK MOLDED 1 - WAY	
1	J102	K333-237	1	CONNECTOR - BLACK MOLDED 1 - WAY	
1	J101	K333-237	1	CONNECTOR - BLACK MOLDED 1 - WAY	
1	J100	K333-237	1	CONNECTOR - BLACK MOLDED 1 - WAY	
1	J97	K333-237	1	CONNECTOR - BLACK MOLDED 1 - WAY	

QTY	ITEM	PART NUMBER	NO OF CAVITIES	PRODUCT DESCRIPTION	MATERIAL
1	J95	K333-46-25	1	CONNECTOR - 3/8" RING TERMINAL	
1	J94	K333-526	3	CONNECTOR - BLACK PACKARD METRI - PACK 280 UNSEALED	
1	J93	K333-537-2	1	CONNECTOR - BLACK DEUTSCH DT	
1	J92	K333-54	1	CONNECTOR - WHITE MOLDED CANDELABRA	
1	J91	K333-54	1	CONNECTOR - WHITE MOLDED CANDELABRA	
1	J90	K333-237	1	CONNECTOR - BLACK MOLDED 1 - WAY	
1	J89	K333-514	2	CONNECTOR - GRAY PACKARD 56 SERIES UNSEALED	
1	J88	P20-1112	1	CONNECTOR - BLACK AMP 1/4" RECEPTACLE	
1	J87	K333-290	3	CONNECTOR - BROWN LOCKING 3 - WAY	
1	J86	P20-1212	16	CONNECTOR - BLACK DELPHI VF280 16 - WAY UNSEALED	
1	J83	P20-1112	1	CONNECTOR - BLACK AMP 1/4" RECEPTACLE	
1	J82	P20-1112	1	CONNECTOR - BLACK AMP 1/4" RECEPTACLE	
1	J81	P20-1112	1	CONNECTOR - BLACK AMP 1/4" RECEPTACLE	
1	J80	P20-1112	1	CONNECTOR - BLACK AMP 1/4" RECEPTACLE	
1	J79	K333-549-202	2	CONNECTOR - BLACK PACKARD METRI - PACK 280 UNSEALED	
1	J78	K333-526	3	CONNECTOR - BLACK MP 280 SERIES PACKARD UNSEALED	
1	J75	P20-1186-2	4	CONNECTOR - BLACK DELPHI MP 630 SERIES	
1	J74	K333-540	6	CONNECTOR - BLACK PACKARD METRI - PACK 150 SERIES SEALED	
1	J73	P20-1186-1	2	CONNECTOR - BLACK DELPHI MP 630 SERIES	
1	J72	P20-1185	16	CONNECTOR - GREY MICRO 64	
1	J71	K333-549-202	2	CONNECTOR - BLACK PACKARD METRI - PACK 280 UNSEALED	
1	J70	P20-1223-14-1-0	14	CONNECTOR - BLACK DEUTSCH HDP20 SERIES, GREEN END	
1	J63	P20-1201	3	CONNECTOR - BLACK METRI - PACK 150 SERIES SEALED	
1	J62	P20-1288	3	CONNECTOR - NATURAL METRI - PACK GT150 SERIES SEALED	
1	J61	P20-1288	3	CONNECTOR - BLACK METRI - PACK GT150 SERIES SEALED	
1	J60	P20-1288	3	CONNECTOR - BLACK METRI - PACK GT150 SERIES SEALED	
1	J56	P20-1172-1204	4	CONNECTOR - BLACK AMP MOS UNSEALED	
1	J55	P20-1172-1204	4	CONNECTOR - BLACK AMP MOS UNSEALED	
1	J54	P20-1016	2	CONNECTOR - NATURAL, METRI - PACK 150 SERIES, 2 WAY, UNSEALED	
1	J49	P20-1112	1	CONNECTOR - BLACK AMP 1/4" RECEPTACLE	
1	J48	P20-1112	1	CONNECTOR - BLACK AMP 1/4" RECEPTACLE	
1	J47	P20-1112	1	CONNECTOR - BLACK AMP 1/4" RECEPTACLE	
1	J46	P20-1112	1	CONNECTOR - BLACK AMP 1/4" RECEPTACLE	
1	J44	P20-1183-2209	9	CONNECTOR - WHITE AMP JPT 9 - WAY	
1	J43	P20-1172-1240	40	CONNECTOR - BLACK AMP MOS 40 - WAY	
1	J42	P20-1172-1252	52	CONNECTOR - BLACK AMP MOS 52 - WAY	
1	J41	P20-1172-1224	24	CONNECTOR - BLACK AMP MOS 24 - WAY	
1	J40	P20-1183-1209	9	CONNECTOR - BLACK AMP JPT 9 - WAY	
1	J39	P20-1173-1214	14	CONNECTOR - BLACK AMP JPT 2 ROW 14 PIN UNSEALED	
1	J37	K333-549-204	4	CONNECTOR - BLACK PACKARD METRI - PACK 280 UNSEALED	
1	J35	K333-46-38	1	CONNECTOR - 5/16" RING TERMINAL	
1	J34	P20-1198	12	CONNECTOR - GREY SWF 12 - WAY	
1	J33	K333-54	1	CONNECTOR - WHITE MOLDED CANDELABRA	
1	J32	K333-237	1	CONNECTOR - BLACK MOLDED 1 - WAY	
1	J31	K333-54	1	CONNECTOR - WHITE MOLDED CANDELABRA	
1	J30	K333-54	1	CONNECTOR - WHITE MOLDED CANDELABRA	
1	J29	P20-1179	6	CONNECTOR - BLACK AMP JPT 6 WAY UNSEALED	
1	J26	P20-1132-1312	12	CONNECTOR - GREEN AMP 3 - ROW MCP UNSEALED	
1	J25	P20-1191-3	10	CONNECTOR - BLACK EATON 10 - WAY	
1	J24	P20-1015	1	CONNECTOR - BLACK PACKARD METRI - PACK 150	
1	J23	P20-1175	16	CONNECTOR - BLACK PACKARD METRI - PACK 280	
1	J023	P92-3043	16	HARNES - RKE JUMPER	
1	J22	P20-1064	4	CONNECTOR - NATURAL METRI - PACK 150 SERIES UNSEALED	
1	J21	P20-1064	4	CONNECTOR - NATURAL METRI - PACK 150 SERIES UNSEALED	
1	J20	P20-1112	1	CONNECTOR - BLACK AMP 1/4" RECEPTACLE	
1	J19	P20-1112	1	CONNECTOR - BLACK AMP 1/4" RECEPTACLE	
1	J18	K333-549-192	2	CONNECTOR - GREY 2 - WAY PACKARD M/P 280 SERIES	
1	J14	P20-1078	2	CONNECTOR - BLACK PACKARD METRI - PACK 150 UNSEALED	
1	J13	P20-1112	1	CONNECTOR - BLACK AMP 1/4" RECEPTACLE	
1	J12	P20-1132-1518	18	CONNECTOR - GREY AMP MCP 3 - ROW UNSEALED	
1	J11	P20-1191-3	10	CONNECTOR - BLACK EATON 10 - WAY	
1	J10	P20-1191-3	10	CONNECTOR - BLACK EATON 10 - WAY	
1	J09	P20-1132-1518	18	CONNECTOR - GREY AMP 3 - ROW MCP	
1	J08	P20-1112	1	CONNECTOR - BLACK AMP 1/4" RECEPTACLE	
1	J07	P20-1112	1	CONNECTOR - BLACK AMP 1/4" RECEPTACLE	
1	J01	P20-1134-47-3-0	47	CONNECTOR - BLACK, DEUTSCH, HDP20, RECEPTACLE	

QTY	ITEM	PART NUMBER	NO OF CAVITIES	PRODUCT DESCRIPTION	MATERIAL
AR	-	ESB-M3G71-B		INSULATOR - ADHESIVE BACKED THIN TAPE WRAP (AFL)	
AR	-	K344-1072		BRAIDED EXPANDABLE WRAP	
AR	-	VINYL TAPE		ADHESIVE BACKED	
AR	-	BLUE TAPE		ADHESIVE BACKED	
AR	-	YELLOW TAPE		ADHESIVE BACKED	
1	CAPC	DIGI - KEY PART # 4061PHTB - ND OR SIMILAR	0.47	MFD, 63 VOLT CAPACITOR	
2	DIODE	MOTOROLA MR752	6	AMP 200 VOLT DIODE	
1	-	46211-06		BLACK COLE HERSEE POWER FEED STUD	
2	-	EC-26		PROTECTIVE COVER	
1	-	K169-140-066CA		NYLOCK HEX NUT, 3/8", LIGHT COARSE THREAD	
AR	-	K344-835		INSULATOR - HEAT SHRINK	
AR	-	K344-813		CONVOLUTED TUBING	
1	-	P10-1000		BOX - PWR DIST	
1	-	P20-1157-002		276, CONN - PD BOX CEP ASSY	
1	-	P22-1012		COVER - UPPER PD BOX	
1	-	P42-1002-1		SEAL - PD BOX	
1	-	P42-1002-2		SEAL - PD BOX	
AR	-	P92-2197		CABLE - J1939 /15 DATA LINK	
1	-	PE2007-001		GROMMET, WIRE BUNDLE	
1	R001	P20-1284	2	BLUE AEE5 1.5mm BLADE, SEALED	
1	P151	P20-1014	1	CONNECTOR - BLACK, PACKARD, METRI - PACK 150 SERIES, UNSEALED	
1	P150	K333-586-204	4	CONNECTOR - BLACK, PACKARD, METRI - PACK 150 SERIES, UNSEALED	
1	P149	P20-1151	2	CONNECTOR - BLACK, DEUTSCH DTM J1939	
1	P148	P20-1193-1202G	2	CONNECTOR - BLACK AMP SUPERSEAL SERIES, SEALED	
1	P147	P20-1285-102	2	CONNECTOR - BLUE AEE5 1.5mm BLADE, SEALED	
1	P146	P20-1228	6	CONNECTOR - DELPHI GT150	
1	P139	K333-549-192	2	CONNECTOR - GREY 2 - WAY PACKARD MP 280 SERIES	
1	P129	K333-41	1	CONNECTOR - BLACK BULLET	
1	P102	P20-1098	2	CONNECTOR - BLACK PACKARD METRI - PACK 150 UNSEALED	
1	P101	P20-1134-09-5-0	9	CONNECTOR - BLACK DEUTSCH 9 WAY HPD20 SEALED	
1	P100	P20-1134-29-5-0	29	CONNECTOR - BLACK DEUTSCH HDP20 29 - WAY SEALED	
1	P93	K333-636-2	1	CONNECTOR - BLACK DEUTSCH DT	
1	P72	P20-1131-1312	12	CONNECTOR - GREEN AMP 3 - ROW JPT UNSEALED	
1	P71	K333-432	4	CONNECTOR - BLACK PACKARD 4 - WAY	
1	P60	P20-1036	2	CONNECTOR - BLACK METRI-PACK 2-WAY 150 SERIES UNSEALED	

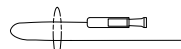
A DWG SIZE A0

© 2009 PACCAR Inc - All Rights Reserved - The information contained in this drawing is proprietary to PACCAR. Reproduction, in whole or in part, by any means is strictly prohibited without prior written authorization from PACCAR Inc.



▶ SPLICE PAIRS MUST BE SEPARATED BY A MINIMUM OF 100MM FROM ADJACENT PAIRS PER SAE J1939-15 STANDARD.

▶ FINISH J127, PARK LAMP BREAKOUT WITH CONNECTOR TAPED BACK TO WIRE USING YELLOW TAPE.



▶ REFERENCE P53-1150 FOR CEP FUSE/RELAY LOCATIONS AND RATINGS.

▶ THE FOLLOWING CONNECTOR SHALL HAVE GOLD PLATED TERMINALS AS DESCRIBED BELOW:

CONNECTOR J01	
TERM	CIRCUIT
7	BLU4527-0
8	GRN4527-0
12	VIO3141-0
13	VIO3142-0
14	BLU3142-0
22	BLU3141-0
23	GRN3141-0
30	GRN0812-9
31	YEL0812-9
41	GRN3142-0
44	GRN4527-1
45	BLU4527-1

▶ CIRCUIT YEL9120-2 TO BE LESS THAN 1000mm.

▶ SPLICE TO BE NO FURTHER THAN 100mm FROM BASE OF CONNECTOR J43.

▶ TERMINALS MUST BE GOLD PLATED

▶ SUPERCEDES P92-4208

GENERAL NOTES:

- USE ON T4/T6/T8/W9/C5 CABS WITH NAMUX III INSTRUMENTATION AND 2010 ENGINES.
- HARNESS SHALL CONFORM TO R026-170-18.
- HARNESS SHALL CONFORM TO R026-170-146.
-ALL CONDUCTORS TO BE GXL EXCEPT IF NOTED OTHERWISE IN THE WIRE INFORMATION TABLE
-WIRE BINDING PER 8.2 EXCEPT BINDING SHALL BE EVERY 100MM OR LESS INSTEAD OF 150MM. IF TIES ARE USED, THEY SHALL NOT IMPEDE BREAKOUT FLEXIBILITY OR CAUSE CHAFING.
-HARNESS COVERING SHALL USE CONVOLUTED TUBING UNLESS OTHERWISE FLAGGED.
- THE FOLLOWING CIRCUITS ARE PART OF A TWISTED PAIR JACKETED CABLE ASSEMBLY. USE CABLE P/N P92-2197. NO LOOPING OF CABLE ASSEMBLY OR WIRES IN HARNESS ASSEMBLY. NO UNTWISTED SECTIONS OF WIRE IN EXCESS OF 50mm AFTER STRIPPING JACKET.

YEL0811-0, GRN0811-0	YEL0813-2, GRN0813-2
YEL0811-1, GRN0811-1	YEL0819-2, GRN0819-2
YEL0811-2, GRN0811-2	YEL0822-2, GRN0822-2
YEL0812-1, GRN0812-1	YEL0822-3, GRN0822-3
YEL0812-3, GRN0812-3	YEL0822-4, GRN0822-4
YEL0812-7, GRN0812-7	
GRN0812-8, YEL0812-8	
YEL0812-9, GRN0812-9	
YEL0812-10, GRN0812-10	

▶ PAPER TAGS SHALL BE APPLIED TO THE HARNESS WITHIN 75mm OF THE BASE OF THE CONNECTOR AND SHOULD BE CLEARLY VISIBLE UPON COMPLETION OF THE HARNESS. PAPER TAG ALL BREAKOUTS WITH CORRESPONDING ITEM NUMBER AND STATEMENT. TAG TO BE WHITE IN COLOR, EXCEPT OTHERWISE NOTED.
EXAMPLE - FOR:

P38: P20-1195-1102, RED TAG
TELLTALE POS.4
CIRCUIT TERM 2: GRA4371-0

TAG SHOULD BE RED AND SHOULD READ: "P38, TELLTALE POS.4"

- DESIGNATES REFERENCE POINT ON ANOTHER SHEET.
- ALL BREAKOUTS MARKED TO BE ORIENTED OUTWARD, 90° FROM DRAWING PAPER. (SEE SECTION S-S, SHEET 6)
- DENOTES A TWISTED PAIR OF WIRES.
 DENOTES A TWISTED, JACKETED PAIR OF WIRES.
 DENOTES A TWISTED TRIPLET OF WIRES.

▶ THE FOLLOWING CIRCUITS ARE TO BE MADE OF HIGH FLEX CPE CONFORMING TO FORD SPECS ESF - M1L64 - A, ESF - M1L28 - A & ESF - M1L34 - A.

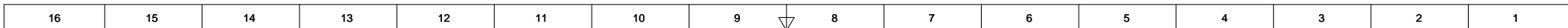
WIRE	SHEET	TYPE	WIRE GAUGE
RED1210-0	15	CPE	(4)
RED1210-1	15	CPE	(4)
RED100-0	15	CPE	(6)
WHT1515-1	12	CPE	(4)
WHT1515-2	12	CPE	(4)
WHT1515-7	14	CPE	(6)

- CONNECTORS TO BE MATED BY HARNESS MANUFACTURER.
- USE HEAT SHRINK OVER THE DIODE AND CAPACITOR. HEAT SHRINK EACH AXIAL ENDS AND THEN HEAT SHRINK TOTAL PACKAGE, EXTENDING 25MM BEYOND END OF DIODE OR CAPACITOR AS PER DETAIL H, SHEET 6 ZONE G4. MANUFACTURER TO SELECT THE SIZE OF THE HEAT SHRINK TO FIT CONDITIONS CALLOUT. HEAT SHRINK TO BE RED AND SHALL MEET R026-170-90. DIODE AND CAPACITOR TO BE LOCATED IN PD BOX IN A FAVORABLE LOCATION AS DETERMINED BY THE HARNESS MANUFACTURER.
- HARNESS MANUFACTURER TO INSTALL GROMMET ON MAIN BUNDLE IN APPROXIMATE LOCATION SHOWN BELOW CEP TO PREVENT WIRE CHAFING.
- NO SPLICES AND NO SERVICE LOOPS ALLOWED IN BREAKOUT FROM P20-1157-002 ROW "SP" TO 100mm PAST P22-1012 (COVER - UPPER PD BOX).
- WIRES SHOWN IN DASH LINE IN HARNESS DIAGRAM ARE SUBJECT TO OMISSION PER HARNESS VARIATION TABLES: A, B OR C (EXAMPLE SEE CIRCUIT BLK6121-0 IN TABLE A AND HARNESS DIAGRAM)
- P20-1134-29-5-0 (P100) & P20-1134-09-5-0 (P101) TO BE COVERED WITH PROTECTIVE CAP TO PROTECT TERMINALS DURING SHIPPING. DEUTSCH CAP PLUGS, PART NUMBER EC-26.
- TAPE THE FOLLOWING J1939 TERMINATING CONNECTORS WITH BLUE TAPE TO MAIN HARNESS BUNDLE OVER LOCKING LATCH. VERIFY WIRES ARE NOT STRAINED AT THE CONNECTOR.
P147, P148 AND P149
- SPOT TAPE AS CLOSE TO BACK OF CONNECTORS AS FEASIBLE.
- PART MARKING AND TRACEABILITY REQUIREMENTS SHALL COMPLY WITH CP50098.
- ALL HARNESS BREAKOUTS TO BE PLACED INSIDE KENWORTH SUPPLIED REUSABLE NYLON BAG. BAG TO BE CINCHED SO HARNESS ID TAG IS VISIBLE. CERF BROS BAG CO., PART # 2251.

HARNESS VARIATION TABLE

TABLE A (DAY CAB / SLEEPER)			
VAR	OMIT CIRCUITS	OMIT COMPONENTS	USAGE
1	BLK6121-0, BRN4388-0, BLK6123-0, BRN6121-0, BRN6930-0, BRN6123-0, GRA4211-0, ORN0791-0, GRA7310-0, GRA4211-1, ORN1260-0, GRA7360-0, GRA4211-2, ORN2613-0, ORN0792-0, GRA4211-3, ORN4221-0, ORN1261-0, ORN6953-2, ORN6930-0, ORN1262-0, ORN7310-0, ORN6953-0, ORN6953-1, ORN7310-2, ORN7310-1, RED1219-0, ORN7310-3, ORN7360-0, WHT4211-0, YEL2941-2, WHT6930-0, WHT7310-0	80, SPLICE 81, SPLICE 70, SPLICE 99, SPLICE J112, K333-237 J113, K333-237 J93, K333-537-2 J94, K333-526 P151, P20-1014 P93, K333-536-2	-DAY CAB WITHOUT LOW VOLTAGE DISCONNECT
2	RED1215-0, BRN6123-1, GRA4211-3, BRN6121-1, BLK6123-1, BLK6121-1, GRA4211-4	P151, P20-1014	-SLEEPER WITH NON-CECU CONTROLLED LOW VOLTAGE DISCONNECT
3	GRA4211-3, BLK6121-0, BLK6123-0, GRA4211-4, BRN6121-0, BRN6123-0, RED1215-0	P151, P20-1014	-DAY CAB WITH NON-CECU CONTROLLED LOW VOLTAGE DISCONNECT
4	RED1215-0, BLK6123-1, BLK6121-1, BRN6123-1, BRN6121-1, GRA4211-4		-SLEEPER WITH CECU CONTROLLED LOW VOLTAGE DISCONNECT
5	RED1215-0, BLK6121-0, BLK6123-0, GRA4211-4, BRN6121-0, BRN6123-0		-DAY CAB WITH CECU CONTROLLED LOW VOLTAGE DISCONNECT
TABLE B (REMOTE THROTTLE AND ENGINE OVERSPEED AIR SHUTOFF)			
VAR	OMIT CIRCUITS	OMIT COMPONENTS	USAGE
1	BLU3144-0, GRA3512-0, GRA3513-0, BRN3963-0, GRN3964-0, YEL3961-0, GRA3964-0, VIO4500-2, GRN4500-2	P150, K333-586-204	WITHOUT: -REMOTE THROTTLE VIA CECU -ENGINE OVERSPEED AIR SHUTOFF
2	NONE	NONE	WITH: -REMOTE THROTTLE VIA CECU -ENGINE OVERSPEED AIR SHUTOFF
TABLE C (REAR AXLE CROSS LOCKS)			
VAR	OMIT CIRCUITS	OMIT COMPONENTS	USAGE
1	BRN2624-3, BRN4361-0, BRN4362-0, BRN4363-0, WHT4360-0	J143, K333-549-106	WITHOUT: -REAR AXLE CROSS LOCKS
2	NONE	NONE	WITH: -REAR AXLE CROSS LOCKS
TABLE D (OPTIONAL CAN BUS)			
VAR	OMIT CIRCUITS	OMIT COMPONENTS	USAGE
1	GRN0811-0, YEL0811-0, GRN0811-1, YEL0811-1, GRN0813-2, YEL0813-2	J149, P20-1150 P149, P20-1151	WITHOUT: -INSTRUMENTATION CAN (I-CAN) BREAKOUT -BODYBUILDER CAN (B-CAN)
2	GRN0811-2, YEL0811-2		WITH: -INSTRUMENTATION CAN (I-CAN) BREAKOUT -BODYBUILDER CAN (B-CAN)

© 2009 PACCAR Inc - All Rights Reserved - The information contained in this drawing is proprietary to PACCAR. Reproduction, in whole or in part, by any means is strictly prohibited without prior written authorization from PACCAR Inc.



USAGE NOTE:
USE ON T4 / T6 / T8 / W9 / C5 CABS WITH NAMUX III INSTRUMENTATION AND 2010 ENGINES.

WIRE INFORMATION FOR HARNESS: P92-4319-0000

WIRE NAME	COMPONENT	FROM	TERM SHEET	COMPONENT	TERM SHEET	C OF C	WIRE SIZE	WIRE GAUGE	WIRE TYPE	DESCRIPTION
BLK4100-0	41 SPLICE	1	13	J42 P20-1172-1252	15	13	S	0.5mm ²	(20)	TXL CVSS GND
BLK4100-1	41 SPLICE	1	13	J56 P20-1172-1204	3	13	S	0.5mm ²	(20)	TXL INSTRUMENTATION, GAUGES RETURN
BLK4100-2	41 SPLICE	1	13	J55 P20-1172-1204	3	13	S	0.5mm ²	(20)	TXL INSTRUMENTATION, GAUGES RETURN
BLK611-0	J12 P20-1132-1518	16	11	J86 P20-1212	11	14	S	0.8mm ²	(18)	GXL SPEAKERS FRONT, LH (-)
BLK611-30	J12 P20-1132-1518	14	11	J86 P20-1212	10	14	S	0.8mm ²	(18)	GXL SPEAKERS FRONT, RH (-)
BLK6121-0	J86 P20-1212	12	14	P100 P20-1134-29-5-0	10	16	S	1.0mm ²	(16)	GXL SLEEPER LH SPKR (-)
BLK6121-1	J86 P20-1212	12	14	J12 P20-1132-1518	1	11	S	0.8mm ²	(18)	GXL CAB LH REAR SPKR (-)
BLK6123-0	J86 P20-1212	9	14	P100 P20-1134-29-5-0	21	16	S	1.0mm ²	(16)	GXL SLEEPER RH SPKR (-)
BLK6123-1	J86 P20-1212	9	14	J12 P20-1132-1518	2	11	S	0.8mm ²	(18)	GXL CAB RH REAR SPKR (-)
BLK7210-0	P71 K333-432	C	14	J73 P20-1186-1	2	14	S	3.0mm ²	(12)	GXL HVAC CAB SYSTEM, BLOWER (-)
BLK7210-1	J72 P20-1185	4	14	J71 K333-549-202	B	14	S	0.5mm ²	(20)	TXL RECIRC DOOR (-)
BLU0855-0	40 SPLICE	1	13	J42 P20-1172-1252	14	13	S	0.5mm ²	(20)	TXL CVSS DATA
BLU0855-1	40 SPLICE	1	13	J56 P20-1172-1204	1	13	S	0.5mm ²	(20)	TXL DATA LINKS, AUXILIARY GAUGE BUS
BLU0855-2	40 SPLICE	1	13	J55 P20-1172-1204	1	13	S	0.5mm ²	(20)	TXL DATA LINKS, AUXILIARY GAUGE BUS
BLU3141-0	P146 P20-1228	A	11	J01 P20-1134-47-3-0	22	11	S	0.8mm ²	(18)	GXL PT SENSE POSITION #1
BLU3141-1	P146 P20-1228	F	11	J01 P20-1134-47-3-0	14	11	S	0.8mm ²	(18)	GXL PT SENSE POSITION #2
BLU3144-0	J42 P20-1172-1252	27	13	J01 P20-1134-47-3-0	39	11	S	0.8mm ²	(18)	TXL REMOTE ACCELERATOR
BLU4511-0	J80 P20-1288	3	13	J42 P20-1172-1252	6	13	S	0.5mm ²	(20)	TXL REAR PRIMARY AIR
BLU4512-0	J61 P20-1288	3	13	J42 P20-1172-1252	7	13	S	0.5mm ²	(20)	TXL SECONDARY AIR SUPPLY
BLU4515-0	J62 P20-1288	3	13	J42 P20-1172-1252	8	13	S	0.5mm ²	(20)	TXL APPLICATION AIR
BLU4517-1	J42 P20-1172-1252	10	13	J63 P20-1201	B	13	S	0.8mm ²	(18)	TXL AIR FLT RESTRICT SIG
BLU4522-0	P100 P20-1134-29-5-0	19	16	J42 P20-1172-1252	21	13	S	0.8mm ²	(18)	TXL TRANS OIL TEMP
BLU4527-0	P60 P20-1036	A	13	J01 P20-1134-47-3-0	7	11	S	0.5mm ²	(20)	TXL OAT SENSOR SENSE
BLU4527-1	J01 P20-1134-47-3-0	45	11	J42 P20-1172-1252	16	13	S	0.8mm ²	(18)	TXL FRESHWATER OAT SENSE
BLU7224-0	J70 P20-1223-141-0	D	14	J72 P20-1185	11	14	S	0.5mm ²	(20)	TXL WATER VALVE POS PORT SIG
BRN2611-0	J137 P20-1191-3	6	17	J41 P20-1172-1224	6	17	S	0.8mm ²	(18)	TXL DOME LAMP IN
BRN2611-1	90 SPLICE	1	17	J137 P20-1191-3	3	17	S	2.0mm ²	(14)	GXL CAB DOME LAMP
BRN2611-2	90 SPLICE	1	17	J135 K333-549-204	C	17	S	2.0mm ²	(14)	GXL CAB DOME LAMP
BRN2611-3	90 SPLICE	1	17	J37 K333-549-204	C	12	S	2.0mm ²	(14)	GXL CAB DOME LAMP
BRN2620-0	27 SPLICE	1	12	J40 P20-1183-1209	7	12	S	0.5mm ²	(20)	TXL DASH ILLUMINATION 1
BRN2620-1	27 SPLICE	1	12	J34 P20-1198	A	12	S	0.8mm ²	(18)	GXL DASH/PANEL ILLUMINATION
BRN2620-2	66 SPLICE	1	14	27 SPLICE	1	12	S	0.8mm ²	(18)	GXL DASH/PANEL ILLUMINATION
BRN2620-3	J37 K333-549-204	D	12	27 SPLICE	1	12	S	0.8mm ²	(18)	GXL DASH/PANEL ILLUMINATION
BRN2620-4	66 SPLICE	1	14	J86 P20-1212	3	14	S	0.8mm ²	(18)	GXL DASH/PANEL ILLUMINATION
BRN2620-5	J86 P20-1134-29-5-0	1	11	J12 P20-1185	1	14	S	0.5mm ²	(20)	TXL DIMMING - PWM INPUT
BRN2620-6	27 SPLICE	1	12	J72 P20-1185	16	14	S	0.5mm ²	(20)	TXL DIMMING - PWM INPUT
BRN2620-7	27 SPLICE	1	12	J25 P20-1191-3	9	12	S	0.8mm ²	(18)	GXL DASH/PNL ILLUMINATION
BRN2621-0	27 SPLICE	1	12	J56 P20-1172-1204	2	13	S	0.5mm ²	(20)	TXL LIGHTING, GAUGES & CLUSTERS
BRN2621-1	27 SPLICE	1	12	J55 P20-1172-1204	2	13	S	0.5mm ²	(20)	TXL LIGHTING, GAUGES & CLUSTERS
BRN2622-0	J136 P20-1191-3	9	17	27 SPLICE	1	12	S	0.8mm ²	(18)	GXL BACKLIGHTING, SWITCHES
BRN2622-1	J137 P20-1191-3	9	17	27 SPLICE	1	12	S	0.8mm ²	(18)	GXL BACKLIGHTING, SWITCHES
BRN2622-2	J135 K333-549-204	D	17	27 SPLICE	1	12	S	0.8mm ²	(18)	GXL BACKLIGHTING, SWITCHES
BRN2622-3	J29 P20-1179	5	12	27 SPLICE	1	12	S	0.8mm ²	(18)	TXL BACKLIGHTING
BRN2622-4	J26 P20-1132-1518	3	12	27 SPLICE	1	12	S	0.8mm ²	(18)	GXL BACKLIGHTING, SWITCH
BRN2622-5	J09 P20-1132-1518	8	11	27 SPLICE	1	12	S	1.0mm ²	(16)	TXL SWITCH BACKLIGHTING
BRN2622-6	J09 P20-1191-3	9	11	27 SPLICE	1	12	S	0.8mm ²	(18)	TXL BACKLIGHTING, SWITCH
BRN2622-7	J150 P20-1131-1209	8	11	27 SPLICE	1	12	S	0.8mm ²	(18)	TXL BACK LIGHTING, SWITCH
BRN2624-0	04 SPLICE	1	11	J40 P20-1183-1209	8	12	S	2.0mm ²	(14)	TXL DASH ILLUMINATION 2
BRN2624-1	J22 P20-1064	D	11	04 SPLICE	1	11	S	0.8mm ²	(18)	TXL AUXILIARY BACKLIGHTING, CTRL
BRN2624-2	J21 P20-1064	D	11	04 SPLICE	1	11	S	0.8mm ²	(18)	TXL AUXILIARY BACKLIGHTING, CTRL
BRN2624-3	J143 K333-549-106	D	11	04 SPLICE	1	11	S	0.8mm ²	(16)	TXL AUXILIARY BACKLIGHTING, CTRL
BRN2624-4	J11 P20-1191-3	9	11	27 SPLICE	1	12	S	0.8mm ²	(18)	GXL BEACON SIGN LAMP
BRN2624-5	J25 P20-1191-3	4	12	J25 P20-1191-3	10	12	S	1.0mm ²	(16)	TXL INHIBIT REGENERATION
BRN3963-0	J01 P20-1134-47-3-0	27	11	P150 K333-586-204	B	14	S	0.8mm ²	(18)	GXL AIR SHUTOFF VLV IND LP
BRN4311-0	J01 P20-1134-47-3-0	41	11	J43 P20-1172-1240	15	13	S	0.5mm ²	(20)	TXL CHECK ENGINE LAMP
BRN4312-0	J01 P20-1134-47-3-0	43	11	J43 P20-1172-1240	16	13	S	0.5mm ²	(20)	TXL STOP ENGINE LAMP
BRN4323-0	J01 P20-1134-47-3-0	40	11	J39 P20-1173-1214	10	13	S	0.8mm ²	(18)	TXL WAIT TO START LAMP
BRN4330-0	J01 P20-1134-47-3-0	3	11	J39 P20-1173-1214	14	13	S	0.8mm ²	(18)	TXL OBD MIL
BRN4361-0	P100 P20-1134-29-5-0	29	16	J143 K333-549-106	E	11	S	1.0mm ²	(16)	TXL R FRONT AXLE LOCK IND
BRN4362-0	P100 P20-1134-29-5-0	27	16	J143 K333-549-106	B	11	S	1.0mm ²	(16)	TXL R CENTER AXLE LOCK IND
BRN4363-0	J143 K333-549-106	C	11	P100 P20-1134-29-5-0	24	16	S	1.0mm ²	(16)	TXL R REAR AXLE LOCK IND
BRN4386-0	J43 CEP	1	16	J39 P20-1173-1214	6	13	S	1.0mm ²	(16)	GXL SLEEPER REFRIGERATOR ON
BRN5114-0	J43 P20-1172-1240	14	13	86 SPLICE	1	16	S	0.5mm ²	(20)	TXL TRAIL ABS WARNING LAMP
BRN5114-1	86 SPLICE	1	16	P101 P20-1134-09-5-0	X	16	S	3.0mm ²	(12)	GXL TRAIL ABS WARNING LAMP
BRN5111-0	J12 P20-1132-1518	15	11	J86 P20-1212	15	14	S	0.8mm ²	(18)	GXL SPEAKERS FRONT, LH (+)
BRN5113-0	J12 P20-1132-1518	13	11	J86 P20-1212	14	14	S	0.8mm ²	(18)	GXL SPEAKERS FRONT, RH (+)
BRN5121-0	J86 P20-1212	16	14	P100 P20-1134-29-5-0	28	16	S	1.0mm ²	(16)	GXL SLEEPER LH SPKR (+)
BRN5121-1	J86 P20-1212	16	14	J12 P20-1132-1518	4	11	S	0.8mm ²	(18)	GXL CAB LH REAR SPKR (+)
BRN5123-0	J86 P20-1212	13	14	P100 P20-1134-29-5-0	22	16	S	1.0mm ²	(16)	GXL SLEEPER RH SPKR (+)
BRN5123-1	J86 P20-1212	13	14	J12 P20-1132-1518	3	11	S	0.8mm ²	(18)	GXL CAB RH REAR SPKR (+)
BRN5930-0	J43 CEP	1	16	P100 P20-1134-29-5-0	11	16	S	1.0mm ²	(16)	GXL SLEEPER REFER WARN LP
GRA0759-0	J6.85 CEP	1	16	J133 K333-549-204	D	16	S	0.8mm ²	(18)	GXL SPARE ACC RELAY RTN 1
GRA0759-1	J7.85 CEP	1	16	J132 K333-549-204	D	16	S	0.8mm ²	(18)	GXL SPARE ACC RELAY RTN 2
GRA1220-0	92 SPLICE	1	17	J138 P20-1095	3	17	S	0.8mm ²	(18)	GXL IGNITION BUS RELAY CTRL
GRA1220-1	E2.86 CEP	1	16	92 SPLICE	1	17	S	0.8mm ²	(18)	GXL IGNITION BUS RELAY CTRL
GRA1220-2	112 SPLICE	1	13	J39 P20-1173-1214	2	13	S	2.0mm ²	(14)	GXL IGNITION BUS RELAY CTRL
GRA1220-3	92 SPLICE	1	17	112 SPLICE	1	13	S	0.8mm ²	(18)	GXL IGNITION BUS RELAY CTRL
GRA1230-0	J138 P20-1095	1	17	93 SPLICE	1	17	S	0.8mm ²	(18)	GXL ACCESSORY BUS RELAY CTRL
GRA1230-1	G2.86 CEP	1	16	93 SPLICE	1	17	S	0.8mm ²	(18)	GXL ACCESSORY BUS RELAY CTRL
GRA1230-2	J43 P20-1172-1240	3	13	93 SPLICE	1	17	S	0.5mm ²	(20)	TXL ACCESSORY PWR
GRA1230-3	J09 P20-1132-1518	15	11	J42 P20-1172-1252	48	13	S	0.5mm ²	(20)	TXL DRL OVERRIDE
GRA2140-0	P72 P20-1131-1312	4	14	J42 P20-1172-1252	52	14	S	0.8mm ²	(18)	TXL HEADLAMP HIGH/LOW IN
GRA2141-0	54 SPLICE	1	14	J26 P20-1132-1312	5	12	S	0.8mm ²	(18)	TXL CTRL HEADLAMP SW

WIRE INFORMATION FOR HARNESS: P92-4319-0000

WIRE NAME	COMPONENT	FROM	TERM SHEET	COMPONENT	TERM SHEET	C OF C	WIRE SIZE	WIRE GAUGE	WIRE TYPE	DESCRIPTION
GRA2141-1	J26 P20-1132-1312	10	12	J41 P20-1172-1224	14	12	S	0.5mm ²	(20)	TXL HEADLAMP ACTIVE
GRA2143-0	J42 P20-1172-1252	51	14	P72 P20-1131-1312	5	14	S	0.8mm ²	(18)	TXL HEADLAMP CONTROL, FLASH
GRA2300-0	J42 P20-1172-1252	32	14	P72 P20-1131-1312	2	14	S	0.8mm ²	(18)	TXL TURN SIG RES LADDER
GRA2411-0	D1 CEP	1	15	J43 P20-1172-1240	6	13	S	0.5mm ²	(20)	TXL PARK LAMP
GRA2411-1	23 SPLICE	1	12	J26 P20-1132-1312	2	12	S	0.8mm ²	(18)	TXL PARK LAMP CTRL
GRA2411-2	J23 P20-1175	5	12	23 SPLICE	1	12	S	0.8mm ²	(18)	GXL CAB/CHASSIS TAIL LAMPS
GRA2411-3	23 SPLICE	1	12	E1.85 CEP	1	12	S	0.8mm ²	(18)	GXL PARK LAMP CTRL
GRA2412-1	G3.85 CEP	1	16	J26 P20-1132-1312	8	12	S	0.8mm ²	(18)	TXL CAB MARKER LAMPS
GRA2415-3	D5 CEP	1	15	J43 P20-1172-1240	5	13	S	0.5mm ²	(20)	TXL STOP LAMP ACTIVE
GRA2611-0	J12 P20-1132-1518	11	11	J40 P20-1183-1209	3	12	S	2.0mm ²	(14)	GXL DOME LAMP OUT
GRA2620-0	J34 P20-1198	3	12	J42 P20-1172-1252	5	13	S	0.5mm ²	(20)	TXL DASH/PNL ILLUMINATION
GRA2631-0	J43 P20-1172-1240	2	13	30 SPLICE	1	12	S	0.8mm ²	(18)	TXL DRIVER DOOR JAMB
GRA2632-0	29 SPLICE	1	12	J41 P20-1172-1224	4	12	S	0.8mm ²	(18)	TXL PASSENGER DOOR JAMB
GRA2941-0	J2.85 CEP	1	16	J136 P20-1191-3	5B	17	S	0.8mm ²	(18)	GXL FLOOD LIGHT CTL
GRA2950-0	J43 P20-1172-1240	8	13	J26 P20-1132-1312	4	12	S	0.8mm ²	(18)	TXL PRIMARY FOG LAMP
GRA2953-0	J26 P20-1132-1312	11	12	J43 P20-1172-1240	18	13	S	0.8mm ²	(18)	TXL SECONDARY FOG LAMP
GRA2980-0	J43 P20-1172-1240	4	13	J09 P20-1132-1518						

© 2009 PACCAR Inc - All Rights Reserved - The information contained in this drawing is proprietary to PACCAR. Reproduction, in whole or in part, by any means is strictly prohibited without prior written authorization from PACCAR Inc.

16 15 14 13 12 11 10 9 8 7 6 5 4 3 2 1

USAGE NOTE:
USE ON T4 / T6 / T8 / W9 / C5 CABS WITH NAMUX III
INSTRUMENTATION AND 2010 ENGINES.

WIRE INFORMATION FOR HARNESS: P92-4319-0000

WIRE NAME	COMPONENT	FROM	TERMIN	SHEET	COMPONENT	TO	TERMIN	SHEET	C OF C	WIRE SIZE	WIRE GAUGE	WIRE TYPE	DESCRIPTION
GRA6623-0	100 SPLICE	1	14	E3.85 CEP	1	15	S	0.8mm ²	(18)	GXL	TXL	MARKER LP FLASH SW	
GRA6623-1	J26 P20-1132-1312	12	12	E3.87 CEP	1	15	S	0.8mm ²	(18)	TXL	MKR / CLEAR FLASH RELAY		
GRA6623-2	J26 P20-1132-1312	9	14	J42 P20-1172-1252	46	14	S	0.8mm ²	(18)	TXL	MARKER LP FLASH		
GRA6623-4	100 SPLICE	1	14	P72 P20-1131-1312	6	14	S	0.8mm ²	(18)	GXL	MARKER LP FLASH SW		
GRA6710-1	P21 P20-1173-1110	8	12	21 SPLICE	1	12	S	0.8mm ²	(18)	GXL	RH / LH DOOR LOCK		
GRA6710-2	21 SPLICE	1	12	P22 P20-1173-1110	8	12	S	0.8mm ²	(18)	GXL	RH / LH DOOR LOCK		
GRA6710-3	21 SPLICE	1	12	J23 P20-1175	7	12	S	0.8mm ²	(18)	GXL	DOOR LOCK		
GRA730-0	J22 SPLICE	1	12	P21 P20-1173-1110	7	12	S	0.8mm ²	(18)	GXL	RH / LH DOOR UNLOCK		
GRA730-1	J22 SPLICE	1	12	P22 P20-1173-1110	7	12	S	0.8mm ²	(18)	GXL	RH / LH DOOR UNLOCK		
GRA6730-2	J23 P20-1175	B	12	22 SPLICE	1	12	S	0.8mm ²	(18)	GXL	DOOR UNLOCK		
GRA6731-1	P21 P20-1173-1110	9	12	J23 P20-1175	A	12	S	0.8mm ²	(18)	GXL	LH DR UNLOCK RELAY		
GRA6912-0	P22 P20-1173-1110	6	12	P21 P20-1173-1110	6	12	S	0.8mm ²	(18)	GXL	RH WINDOW UP		
GRA6915-0	P22 P20-1173-1110	5	12	P21 P20-1173-1110	5	12	S	0.8mm ²	(18)	GXL	RH WINDOW DOWN		
GRA711-0	J72 P20-1185	2	14	50 SPLICE	1	14	S	0.8mm ²	(18)	TXL	AC CLUTCH FIELD		
GRA711-1	P71 K333-432	D	14	50 SPLICE	1	14	S	0.8mm ²	(18)	GXL	A/C COMPRESSOR CLUTCH		
GRA711-2	50 SPLICE	1	14	J43 P20-1172-1240	9	13	S	0.8mm ²	(18)	TXL	A/C COMPRESSOR CLUTCH		
GRA711-3	J1.85 CEP	1	16	J70 P20-1223-14-1-0	A	14	S	0.8mm ²	(18)	GXL	AC CLUTCH HP SW		
GRA713-0	P71 K333-432	A	14	J1.86 CEP	1	16	S	0.8mm ²	(18)	GXL	HVAC, FREEZE SWITCH		
GRA721-0	J72 P20-1185	6	14	J75 P20-1186-2	3	14	S	0.5mm ²	(20)	TXL	BLOWER MOTOR PWM OUT		
GRA722-0	J72 P20-1185	5	14	J74 K333-540	D	14	S	0.5mm ²	(20)	TXL	MODE DOOR CTRL		
GRA731-0	J72 P20-1185	10	14	G5.86 CEP	1	16	S	0.8mm ²	(18)	TXL	SLEEPER ENABLE		
GRA7360-0	P100 P20-1134-29-5-0	15	16	J72 P20-1185	1	14	S	0.8mm ²	(18)	GXL	SLEEPER HVAC SENSE		
GRA812-0	J42 P20-1172-1252	39	13	E5.85 CEP	1	15	S	0.8mm ²	(18)	TXL	TRLR STOP LP RLV CTRL		
GRA9130-2	J26 P20-1132-1312	7	12	G6.85 CEP	1	16	S	0.8mm ²	(18)	TXL	TRLR MARKER		
GRN8011-0	J39 P20-1173-1214	7	13	P148 P20-1151	1	13	Δ	0.75mm ²	(19)	XPOLY	V-CAN LOW		
GRN811-1	J43 P20-1172-1240	35	13	J149 P20-1150	1	13	Δ	0.75mm ²	(19)	XPOLY	V-CAN LOW		
GRN811-2	J43 P20-1172-1240	35	13	J39 P20-1173-1214	7	13	Δ	0.75mm ²	(19)	XPOLY	V-CAN LOW		
GRN812-1	101 SPLICE	1	11	11 SPLICE	1	11	Δ	0.75mm ²	(19)	XPOLY	V-CAN LOW		
GRN812-3	101 SPLICE	1	11	P148 P20-1193-1202G	1	11	Δ	0.75mm ²	(19)	XPOLY	V-CAN LOW		
GRN812-7	P04 P20-1199-1	D	11	101 SPLICE	1	11	Δ	0.75mm ²	(19)	XPOLY	V-CAN LOW		
GRN812-8	102 SPLICE	1	13	11 SPLICE	1	11	Δ	0.75mm ²	(19)	XPOLY	V-CAN LOW		
GRN812-9	J148 P20-1193-1102G	1	11	J01 P20-1134-47-3-0	30	11	Δ	0.75mm ²	(19)	XPOLY	V-CAN LOW		
GRN812-10	J150 P20-1131-1209	1	11	11 SPLICE	1	11	Δ	0.75mm ²	(19)	XPOLY	V-CAN LOW		
GRN812-11	J43 P20-1172-1240	38	13	102 SPLICE	1	13	Δ	0.75mm ²	(19)	XPOLY	V-CAN LOW		
GRN812-13	J43 P20-1172-1240	40	13	102 SPLICE	1	13	Δ	0.75mm ²	(19)	XPOLY	V-CAN LOW		
GRN813-2	P100 P20-1134-29-5-0	18	16	J42 P20-1172-1252	44	14	Δ	0.75mm ²	(19)	XPOLY	B-CAN LOW		
GRN813-3	P100 P20-1134-29-5-0	5	16	J43 P20-1172-1240	33	13	Δ	0.75mm ²	(19)	XPOLY	B-CAN LOW		
GRN822-2	114 SPLICE	1	11	J42 P20-1172-1252	41	14	Δ	0.75mm ²	(19)	XPOLY	D-CAN LOW		
GRN822-3	114 SPLICE	1	11	P04 P20-1199-1	J	11	Δ	0.75mm ²	(19)	XPOLY	D-CAN LOW		
GRN822-4	114 SPLICE	1	11	P147 P20-1285-102	1	11	Δ	0.75mm ²	(19)	XPOLY	D-CAN LOW		
GRN831-0	P04 P20-1199-1	G	11	J14 P20-1078	B	11	Δ	0.75mm ²	(19)	GXL	J1587 DATA LINK (-)		
GRN815-0	J42 P20-1172-1252	25	13	44 SPLICE	1	13	S	0.8mm ²	(18)	TXL	ANALOG GROUND		
GRN814-0	P146 P20-1228	B	11	J01 P20-1134-47-3-0	24	11	S	0.8mm ²	(18)	GXL	PT RETURN #1		
GRN814-2	P146 P20-1228	E	11	J01 P20-1134-47-3-0	41	11	S	0.8mm ²	(18)	GXL	PT RETURN #2		
GRN830-0	J01 P20-1134-47-3-0	1	10	P150 K333-586-204	A	14	S	0.8mm ²	(18)	GXL	AIR SHUTOFF TEST SW RTN		
GRN4500-0	42 SPLICE	1	13	J42 P20-1172-1252	2	13	S	0.8mm ²	(18)	TXL	POWER SUPPLY GROUND		
GRN4500-2	J01 P20-1134-47-3-0	24	11	44 SPLICE	1	13	S	0.8mm ²	(18)	GXL	NAMUX ANALOG RETURN		
GRN4511-0	J80 P20-1288	1	13	42 SPLICE	1	13	S	0.8mm ²	(18)	TXL	TRANSDUCER, PRESS, PRIMARY AIR		
GRN4512-0	J81 P20-1288	1	13	42 SPLICE	1	13	S	0.8mm ²	(18)	TXL	TRANSDUCER, PRESS, SECOND AIR		
GRN4515-0	J82 P20-1288	1	13	42 SPLICE	1	13	S	0.8mm ²	(18)	TXL	TRACT BRK APP PRESS TRANSDUCER		
GRN4517-0	42 SPLICE	1	13	J63 P20-1201	A	13	S	0.8mm ²	(18)	TXL	AIR FILTER RESTRICTION RTN		
GRN4527-0	P60 P20-1036	B	13	J01 P20-1134-47-3-0	8	11	S	0.8mm ²	(18)	TXL	OT SENSOR RETURN		
GRN4527-1	J01 P20-1134-47-3-0	44	11	44 SPLICE	1	13	S	0.8mm ²	(18)	GXL	FIREWALL AOT RETURN		
GRN4620-0	H4 SPLICE	1	13	J54 P20-1016	B	13	S	0.8mm ²	(18)	GXL	SPARE ANALOG INPUT, GND		
GRN4651-0	J29 P20-1173	3	12	J40 P20-1153-1209	6	12	S	0.8mm ²	(20)	TXL	MCS GND		
GRN7224-0	J70 P20-1223-14-1-0	C	14	J72 P20-1185	12	14	S	0.5mm ²	(20)	TXL	WATER VALVE POS PORT (-)		
GRN7225-0	J70 P20-1223-14-1-0	E	14	J72 P20-1185	14	14	S	0.5mm ²	(20)	TXL	WATER VALVE MOTOR (-)		
ORN0731-0	B7 CEP	1	15	J114 K333-237	1	15	S	3.0mm ²	(12)	GXL	SPARE IGNITION A		
ORN0731-1	F4 CEP	1	16	J125 K333-237	1	16	S	1.0mm ²	(16)	GXL	IGN PWR, SPARE		
ORN0732-0	B8 CEP	1	15	J115 K333-237	1	15	S	3.0mm ²	(12)	GXL	SPARE IGNITION B		
ORN0733-0	B9 CEP	1	15	J116 K333-237	1	15	S	3.0mm ²	(12)	GXL	SPARE IGNITION C		
ORN0734-0	B10 CEP	1	15	J117 K333-237	1	15	S	3.0mm ²	(12)	GXL	SPARE IGNITION D		
ORN0742-0	J133 K333-549-204	A	16	J6.30 CEP	1	16	S	3.0mm ²	(12)	GXL	SPARE ACCESSORY F		
ORN0743-0	J132 K333-549-204	A	16	J7.30 CEP	1	16	S	3.0mm ²	(12)	GXL	SPARE ACCESSORY G		
ORN0751-0	A9 CEP	1	15	J108 K333-237	1	15	S	3.0mm ²	(12)	GXL	SPARE ACCESSORY A		
ORN0752-0	A10 CEP	1	15	J109 K333-237	1	15	S	3.0mm ²	(12)	GXL	SPARE ACCESSORY B		
ORN0753-0	A11 CEP	1	15	J110 K333-237	1	15	S	3.0mm ²	(12)	GXL	SPARE ACCESSORY C		
ORN0754-0	A12 CEP	1	15	J111 K333-237	1	15	S	3.0mm ²	(12)	GXL	SPARE ACCESSORY D		
ORN0755-0	J133 K333-549-204	B	16	J6.87A CEP	1	16	S	3.0mm ²	(12)	GXL	SPARE ACC RELAY NC 1		
ORN0755-1	J132 K333-549-204	B	16	J7.87A CEP	1	16	S	3.0mm ²	(12)	GXL	SPARE ACC RELAY NC 2		
ORN0756-0	J133 K333-549-204	C	16	J6.87 CEP	1	16	S	3.0mm ²	(12)	GXL	SPARE ACC RELAY NO 1		
ORN0756-1	J132 K333-549-204	C	16	J7.87 CEP	1	16	S	3.0mm ²	(12)	GXL	SPARE ACC RELAY NO 2		
ORN0758-0	J6.86 CEP	1	16	H7 CEP	1	16	S	0.8mm ²	(18)	GXL	ACC RELAY COIL PWR		
ORN0758-2	J7.86 CEP	1	16	J6.86 CEP	1	16	S	0.8mm ²	(18)	GXL	SPARE RELAY COIL PWR		
ORN0771-0	B1 CEP	1	15	J120 P20-1112	1	15	S	3.0mm ²	(12)	GXL	SPARE SWITCH CIRCUIT B		
ORN0772-0	B2 CEP	1	15	J121 P20-1112	1	15	S	3.0mm ²	(12)	GXL	SPARE SWITCH CIRCUIT B		
ORN0773-0	B3 CEP	1	15	J122 P20-1112	1	15	S	3.0mm ²	(12)	GXL	SPARE SWITCH CIRCUIT C		
ORN0774-0	B4 CEP	1	15	J123 P20-1112	1	15	S	3.0mm ²	(12)	GXL	SPARE SWITCH CIRCUIT D		
ORN0774-1	B4 CEP	1	15	J124 P20-1112	1	15	S	3.0mm ²	(12)	GXL	SPARE SWITCH CIRCUIT D		
ORN0791-0	B5 CEP	1	15	J112 K333-237	1	15	S	3.0mm ²	(12)	GXL	SPARE LVD A		
ORN0792-0	B6 CEP	1	15	J113 K333-237	1	15	S	3.0mm ²	(12)	GXL	SPARE LVD B		
ORN0993-0	F6 CEP	1	16	P100 P20-1134-29-5-0	17	16	S	2.0mm ²	(14)	GXL	IGN PWR, AIR TANK VALVE		
ORN1150-0	F2 CEP	1	16	20 SPLICE	1	12	S	0.8mm ²	(18)	GXL	IGN PWR, DOOR		

WIRE INFORMATION FOR HARNESS: P92-4319-0000

WIRE NAME	COMPONENT	FROM	TERMIN	SHEET	COMPONENT	TO	TERMIN	SHEET	C OF C	WIRE SIZE	WIRE GAUGE	WIRE TYPE	DESCRIPTION
ORN1150-1	20 SPLICE	1	12	P22 P20-1173-1110	3	12	S	0.8mm ²	(18)	GXL	IGNITION PWR		
ORN1150-2	P21 P20-1173-1110	3	12	20 SPLICE	1	12	S	0.8mm ²	(18)	GXL	IGNITION PWR		
ORN1220-0	E3.87 CEP	1	15	74 SPLICE	1	15	S	8.0mm ²	(6)	GXL	POWER BUS, IGNITION BUS 1		
ORN1221-0	P20 SPLICE	1	15	H12 PWR CEP	1	16	S	2.0mm ²	(14)	GXL	POWER BUS, IGNITION BUS 1		
ORN1221-1	74 SPLICE	1	15	B7-10_PWR CEP	1	15	S	5.0mm ²	(10)	GXL	POWER BUS, IGNITION BUS 1		
ORN1222-0	74 SPLICE	1	15	E6.86 CEP	1	15	S	0.8mm ²	(18)	GXL	POWER BUS, IGNITION BUS 2		
ORN1223-0	74 SPLICE	1	15	F1-6_PWR CEP	1	16	S	5.0mm ²	(10)	GXL	POWER BUS, IGNITION BUS 3		
ORN1223-1	74 SPLICE	1	15	F7-10_PWR CEP	1	16	S	5.0mm ²	(10)	GXL	POWER, IGNITION BUSS		
ORN1224-0	J8.86 CEP	1	16	74 SPLICE	1	15	S	0.8mm ²	(18)	GXL	POWER BUS, IGNITION BUS 4		
ORN1229-0	J01 P20-1134-47-3-0	1	11	H12 CEP	1	16	S	1.0mm ²	(16)	GXL	POWER, IGN BUS		
ORN1230-0	80 SPLICE	1	16	G2.87 CEP	1	16	S	0.8mm ²	(8)	GXL	POWER BUS, ACCESSORY BUS 1		
ORN1231-0	80 SPLICE	1	16	A8-12_PWR CEP	1	15	S	5.0mm ²	(10)	GXL	POWER BUS, ACCESSORY BUS 2		
ORN1232-0	B1-4_PWR CEP	1	15	80 SPLICE	1	16	S	5.0mm ²	(10)	GXL	POWER BUS, ACCESSORY BUS 1		
ORN1233-0	H5.6_PWR CEP	1	16	80 SPLICE	1	16	S	5.0mm ²	(10)	GXL	POWER BUS, ACCESSORY BUS 3		
ORN1234-0	CAPC CAP	A	16	80 SPLICE	1	16	S	0.8mm ²	(18)	GXL	POWER BUS, ACCESSORY BUS 4		
ORN1234-1	H7-11_PWR CEP	1	16	80 SPLICE	1	16	S	5.0mm ²	(10)	GXL	POWER BUS, ACCESSORY BUS 4		
ORN1260-0	J93 K333-537-2	1</											

© 2009 PACCAR Inc - All Rights Reserved - The information contained in this drawing is proprietary to PACCAR. Reproduction, in whole or in part, by any means is strictly prohibited without prior written authorization from PACCAR Inc.

16 15 14 13 12 11 10 9 8 7 6 5 4 3 2 1

USAGE NOTE:

USE ON T4 / T6 / T8 / W9 / C5 CABS WITH NAMUX III INSTRUMENTATION AND 2010 ENGINES.

WIRE INFORMATION FOR HARNESS: P92-4319-0000

WIRE NAME	COMPONENT	FROM	TERM	SHEET	TO	TERM	SHEET	C OF C	WIRE SIZE	WIRE GAUGE	WIRE TYPE	DESCRIPTION
RED1211-1	A4-6_PWR CEP	1	15	94L SPLICE	1	15	S	5.0mm ² (10)	GXL	POWER BUS, BATTERY BUS 1		
RED1211-2	A7-8_PWR CEP	1	15	94R SPLICE	1	15	S	3.0mm ² (12)	GXL	POWER BUS, BATTERY BUS 1		
RED1212-0	94L SPLICE	1	15	C15_PWR CEP	1	15	S	5.0mm ² (10)	GXL	POWER BUS, BATTERY BUS 3		
RED1212-1	94R SPLICE	1	15	C7-10_PWR CEP	1	15	S	5.0mm ² (10)	GXL	POWER BUS, BATTERY BUS 1		
RED1212-2	94R SPLICE	1	15	C11-12_PWR CEP	1	15	S	3.0mm ² (12)	GXL	POWER BUS, BATTERY BUS 3		
RED1213-0	D2-4_PWR CEP	1	15	94L SPLICE	1	15	S	5.0mm ² (10)	GXL	POWER BUS, BATTERY BUS 4		
RED1213-1	D8-12_PWR CEP	1	15	94R SPLICE	1	15	S	5.0mm ² (10)	GXL	POWER BUS, BATTERY BUS 4		
RED1214-0	F11,12_PWR CEP	1	16	94R SPLICE	1	15	S	5.0mm ² (10)	GXL	POWER BUS, BATTERY BUS 5		
RED1215-0	F14_PWR CEP	1	16	94R SPLICE	1	15	S	5.0mm ² (10)	GXL	POWER BUS, BATTERY BUS 6		
RED1217-0	E2_30 CEP	1	15	94L SPLICE	1	15	S	8.0mm ² (8)	GXL	POWER BUS, BATTERY BUS 7		
RED1218-0	94L SPLICE	1	15	G2_30 CEP	1	16	S	8.0mm ² (8)	GXL	POWER BUS, BATTERY BUS 8		
RED1219-0	P93 K333-536-2	1	15	94R SPLICE	1	15	S	8.0mm ² (8)	GXL	POWER BUS, BATTERY BUS 9		
RED1910-0	94 SPLICE	1	17	G2 CEP	1	15	S	1.0mm ² (16)	GXL	KEYSWITCH BATT PWR		
RED1910-1	J138 P20-1095	4	17	94 SPLICE	1	17	S	1.0mm ² (16)	GXL	KEYSWITCH BATT PWR		
RED2111-0	C10 CEP	1	15	78 SPLICE	1	15	S	3.0mm ² (12)	GXL	PARK LAMP PWR		
RED2111-1	78 SPLICE	1	15	E1_30 CEP	1	15	S	3.0mm ² (12)	GXL	PARK LAMP PWR		
RED2411-2	76 SPLICE	1	15	E1_86 CEP	1	15	S	3.0mm ² (12)	GXL	PARK LAMP PWR		
RED2412-0	94L SPLICE	1	15	G3_86 CEP	1	16	S	2.0mm ² (14)	GXL	CAB MARKER LAMPS RELAY PWR		
RED2412-1	94L SPLICE	1	15	G3_30 CEP	1	16	S	2.0mm ² (14)	GXL	CAB MARKER LAMPS PWR		
RED2415-3	D4 CEP	1	15	J79 K333-549-204	A	14	S	2.0mm ² (14)	GXL	STOP LAMPS, BATT PWR		
RED2840-3	71 SPLICE	1	15	Z8 SPLICE	1	12	S	1.0mm ² (16)	GXL	LIGHTING, DOOR JAMB SWITCHES		
RED2841-0	P28 K333-511	3	12	Z8 SPLICE	1	12	S	0.8mm ² (18)	GXL	LTNG. DOOR JAMB SW, LH		
RED2842-0	P26 K333-511	3	12	Z8 SPLICE	1	12	S	0.8mm ² (18)	GXL	LTNG. DOOR JAMB SW, RH		
RED2900-0	C1 CEP	1	15	78 SPLICE	1	15	S	0.8mm ² (18)	GXL	MISC LIGHTING PWR		
RED2911-0	C7 CEP	1	15	J11 P20-1191-3	2B	11	S	1.0mm ² (16)	TXL	BEACONING LAMP PWR		
RED2940-0	63 SPLICE	1	11	C8 CEP	1	15	S	1.0mm ² (16)	GXL	LIGHTING, FLOOD/WORKLOAD & SPOT		
RED2940-1	71 SPLICE	1	11	C8 CEP	1	15	S	1.0mm ² (16)	GXL	LIGHTING, FLOOD/WORKLOAD & SPOT		
RED2940-2	63 SPLICE	1	11	J12 P20-1132-1518	12	11	S	1.0mm ² (16)	GXL	LIGHTING, FLOOD		
RED2941-0	78 SPLICE	1	15	J136 P20-1191-3	2B	17	S	0.8mm ² (18)	GXL	FLOOD LIGHT PWR		
RED2941-1	J2_30 CEP	1	16	G3 CEP	1	15	S	2.0mm ² (14)	GXL	FLOOD LIGHT PWR		
RED2941-2	G3 CEP	1	15	J2_86 CEP	1	16	S	2.0mm ² (14)	GXL	FLOOD LIGHT PWR		
RED2980-0	78 SPLICE	1	15	J99 P20-1132-1518	13	11	S	0.8mm ² (18)	TXL	HAZARD PWR		
RED3153-0	94 SPLICE	1	17	G1_86 CEP	1	16	S	1.0mm ² (16)	GXL	IDLE CTRL SYS, TIMER		
RED3155-0	94 SPLICE	1	17	G1_30 CEP	1	16	S	1.0mm ² (16)	GXL	IDLE CTRL SYS, IGNITION RELAY CONTROL		
RED3914-0	94 SPLICE	1	17	J5_86 CEP	1	16	S	0.8mm ² (18)	GXL	CECU ST ARTER INTERRUPT		
RED4210-0	J40 P20-1183-1209	9	12	F11 CEP	1	16	S	2.0mm ² (14)	GXL	CECU POWER 2		
RED4210-1	J40 P20-1183-1209	2	12	F12 CEP	1	16	S	2.0mm ² (14)	GXL	CECU POWER 1		
RED4210-2	J39 P20-1173-1214	1	13	G8 CEP	1	15	S	0.8mm ² (18)	GXL	INSTRU POWER, BATTERY		
RED4820-0	78 SPLICE	1	15	J89 K333-514	B	14	S	0.8mm ² (18)	GXL	CLOCK PWR		
RED4830-0	71 SPLICE	1	15	D10 CEP	1	15	S	1.0mm ² (16)	GXL	BATT PWR, DIAGNOSTICS		
RED5100-0	75 SPLICE	1	15	P101 P20-1134-09-5-0	R	16	S	13.0mm ² (6)	CPE	TRL ABS PWR		
RED5100-1	75 SPLICE	1	15	E6_30 CEP	1	15	S	5.0mm ² (10)	GXL	ABS PWR		
RED5111-0	D12 CEP	1	15	J151 K333-549-102	A	11	S	3.0mm ² (12)	GXL	ABS MONITOR FEED		
RED5910-0	J70 P20-1223-14-1-0	K	14	C9 CEP	1	16	S	2.0mm ² (14)	GXL	INSTRU MOTOR POWER		
RED5920-0	D11 CEP	1	15	J8_30 CEP	1	16	S	3.0mm ² (12)	GXL	BATT PWR, MIRROR HEAT		
RED5970-0	J3_30 CEP	1	16	71 SPLICE	1	15	S	1.0mm ² (16)	GXL	BATT PWR, HORN		
RED5970-1	71 SPLICE	1	15	J3_86 CEP	1	16	S	1.0mm ² (16)	GXL	BATT PWR, HORN		
RED6191-0	D3 CEP	1	15	P13 K333-598	1	11	S	1.0mm ² (16)	GXL	RADIO, BATT POWER		
RED6191-1	J13 P20-1112	1	11	G2 SPLICE	1	14	S	1.0mm ² (16)	GXL	RADIO, MEMORY POWER		
RED6191-2	J86 P20-1212	8	14	G2 SPLICE	1	14	S	1.0mm ² (16)	GXL	RADIO, MEMORY POWER		
RED6291-0	J13 P20-1112	1	11	J12 P20-1132-1518	5	11	S	1.0mm ² (16)	GXL	CB, BATT POWER		
RED6291-1	J87 K333-290	A	14	G2 SPLICE	1	14	S	1.0mm ² (16)	GXL	CB, MEMORY POWER		
RED6291-2	94L SPLICE	1	15	E3_86 CEP	1	15	S	0.8mm ² (18)	GXL	MARKER/CLEARANCE FLASH RELAY PWR		
RED6750-0	D9 CEP	1	15	J23 P20-1175	E	12	S	0.8mm ² (18)	GXL	RKE, PWR		
RED9120-0	75 SPLICE	1	15	E5_30 CEP	1	15	S	5.0mm ² (10)	GXL	TRAILER STOP LAMP PWR		
RED9120-1	D2 CEP	1	15	E5_86 CEP	1	15	S	0.8mm ² (18)	GXL	TRAILER STOP RELAY CTRL BATT		
RED9130-0	94R SPLICE	1	15	G6_86 CEP	1	16	S	0.8mm ² (18)	GXL	MARKER/CLEARANCE LAMP PWR		
RED9130-1	94R SPLICE	1	15	G6_30 CEP	1	16	S	3.0mm ² (12)	GXL	MARKER/CLEARANCE LAMP RTN		
RED9200-0	C5 CEP	1	15	J129 K333-33	1	16	S	3.0mm ² (12)	GXL	TRAILER HOTWIRE		
RED9201-0	P129 K333-41	F	16	P101 P20-1134-09-5-0	T	16	S	3.0mm ² (12)	GXL	TRAILER HOTWIRE		
VI0381-0	P04 P20-1199-1	F	11	J14 P20-1078	A	11	S	0.8mm ² (18)	GXL	J1587 DATA LINK (+)		
VI0314-0	P146 P20-1228	C	11	J01 P20-1134-47-3-0	12	11	S	0.8mm ² (18)	GXL	PT SUPPLY #1 (+5V)		
VI03142-0	J01 P20-1134-47-3-0	13	11	P146 P20-1228	D	11	S	0.8mm ² (18)	GXL	PT SUPPLY #2 (+5V)		
VI04500-0	43 SPLICE	1	13	J42 P20-1172-1252	1	13	S	0.8mm ² (18)	TXL	PWR SUPP SENSOR (+5V)		
VI04500-2	43 SPLICE	1	13	J01 P20-1134-47-3-0	28	11	S	0.8mm ² (18)	GXL	NAMUX POWER SUPPLY (+5V)		
VI04511-0	J60 P20-1288	2	13	43 SPLICE	1	13	S	0.8mm ² (18)	TXL	TRANSDUCER, PRESS, PRIMARY AIR		
VI04512-0	J61 P20-1288	2	13	43 SPLICE	1	13	S	0.8mm ² (18)	TXL	TRANSDUCER, PRESS, SECOND AIR		
VI04513-0	J62 P20-1288	2	13	43 SPLICE	1	13	S	0.8mm ² (18)	TXL	TRACTR BRK APP PRESS TRANSDUCER		
VI04517-0	43 SPLICE	1	13	J63 P20-1201	C	13	S	0.8mm ² (18)	TXL	AIRFILTER RESTRICTION SUPPLY		
VI04620-0	J54 P20-1016	A	13	43 SPLICE	1	13	S	0.8mm ² (18)	GXL	SPARE ANALOG INPUT, PWR		
VI0724-0	J70 P20-1223-14-1-0	N	14	J72 P20-1185	13	14	S	0.5mm ² (20)	TXL	WALVE VALVE POS STOP (+)		
WHT0996-0	P04 P20-1199-1	A	11	Z6 SPLICE	1	12	S	2.0mm ² (14)	GXL	DIAGNOSTIC CONN, GND		
WHT1220-0	75 SPLICE	1	12	E2_86 CEP	1	15	S	0.8mm ² (18)	GXL	POWER BUS, IGNITION BUS RELAY RTN		
WHT1230-0	E6_85 CEP	1	15	G2_85 CEP	1	16	S	0.8mm ² (18)	GXL	ACCESSORY BUS, GND		
WHT1512-0	J70 P20-1223-14-1-0	G	14	86 SPLICE	1	14	S	2.0mm ² (14)	TXL	FIREWALL HARN RETURN		
WHT1515-0	24 SPLICE	1	12	J35 K333-46-38	1	12	S	32.0mm ² (2)	SGX	INSTRUMENT PANEL, GROUND		
WHT1515-1	24 SPLICE	1	12	Z4 SPLICE	1	12	S	19.0mm ² (4)	CPE	INSTRUMENT PANEL, GROUND		
WHT1515-2	24 SPLICE	1	12	86 SPLICE	1	14	S	19.0mm ² (4)	CPE	GROUPS, INSTRUMENT PANEL		
WHT1515-3	75 SPLICE	1	12	CAPC CLAMP	1	12	S	0.8mm ² (18)	GXL	INSTRUMENT PANEL, GROUND		
WHT1515-4	26 SPLICE	1	12	Z5 SPLICE	1	12	S	8.0mm ² (8)	GXL	INSTRUMENT PANEL, GROUND		
WHT1515-5	J39 P20-1173-1214	3	13	86 SPLICE	1	14	S	2.0mm ² (14)	TXL	GND, INSTRUMENT PANEL		
WHT1515-6	J44 P20-1183-2209	5	13	64 SPLICE	1	14	S	0.8mm ² (18)	TXL	GROUND, INSTRUMENT PANEL		
WHT1515-7	65 SPLICE	1	14	64 SPLICE	1	14	S	13.0mm ² (6)	CPE	GROUPS, INSTRUMENT PANEL		
WHT1515-8	J91 K333-54	1	14	64 SPLICE	1	14	S	2.0mm ² (14)	GXL	INSTRUMENT PANEL, GROUND		

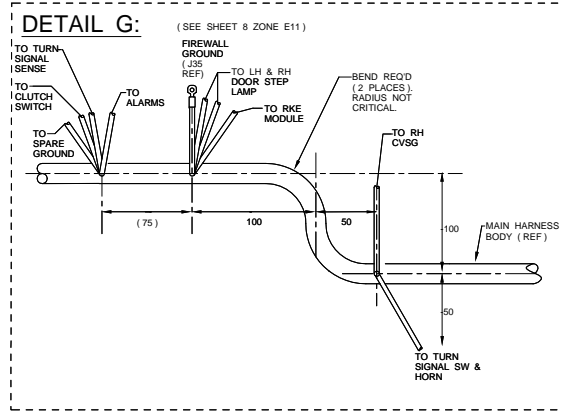
WIRE INFORMATION FOR HARNESS: P92-4319-0000

WIRE NAME	COMPONENT	FROM	TERM	SHEET	TO	TERM	SHEET	C OF C	WIRE SIZE	WIRE GAUGE	WIRE TYPE	DESCRIPTION
WHT1515-9	J92 K333-54	1	14	64 SPLICE	1	14	S	2.0mm ² (14)	GXL	INSTRUMENT PANEL, GROUND		
WHT1515-10	Z30 K333-54	1	12	Z5 SPLICE	1	12	S	2.0mm ² (14)	GXL	INSTRUMENT PANEL, GROUND		
WHT1515-11	J51 K333-54	1	12	Z5 SPLICE	1	12	S	2.0mm ² (14)	GXL	INSTRUMENT PANEL, GROUND		

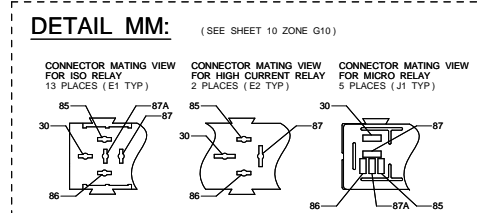
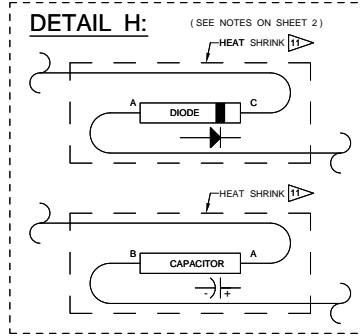
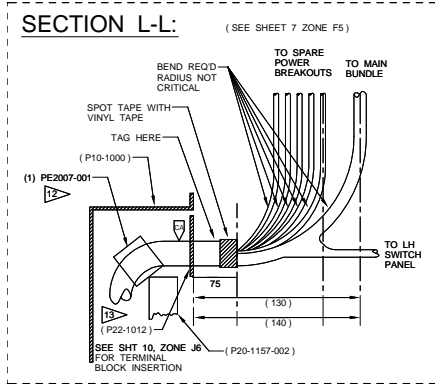
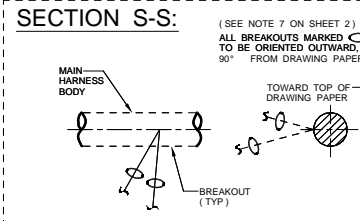
© 2009 PACCAR Inc - All Rights Reserved - The information contained in this drawing is proprietary to PACCAR. Reproduction, in whole or in part, by any means is strictly prohibited without prior written authorization from PACCAR Inc.

16 15 14 13 12 11 10 9 8 7 6 5 4 3 2 1

WIRE INFORMATION FOR HARNESS: P92-4319-0000										
WIRE NAME	COMPONENT	FROM	TERMIN SHEET	TO	TERMIN SHEET	C OF C	WIRE SIZE	WIRE GAUGE	WIRE TYPE	DESCRIPTION
YEL2415-2	J150	P20-1131-1209	6 11	S8 SPLICE	1 14	S	2.0mm ²	(14)	GXL	ABS STOP LP SIG
YEL2631-0	P22	P20-1173-1110	4 12	P28 K333-511	2 12	S	0.8mm ²	(18)	GXL	DOOR COURTESY LAMP
YEL2632-0	P22	P20-1173-1110	4 12	P28 K333-511	2 12	S	0.8mm ²	(18)	GXL	DOOR COURTESY LAMP
YEL2811-0	J12	P20-1132-1518	8 11	J11 P20-1191-3	3 11	S	1.0mm ²	(16)	TXL	BEACON SIGN LAMP
YEL2921-0	P28	K333-511	1 12	S0 SPLICE	1 12	S	0.8mm ²	(18)	GXL	LIGHTING, STEP LP, LH
YEL2921-1	S0	SPLICE	1 12	P29 K333-550-101	1 12	S	0.8mm ²	(18)	GXL	LIGHTING, STEP LP, LH
YEL2922-0	P28	K333-511	1 12	S0 SPLICE	1 12	S	0.8mm ²	(18)	GXL	LIGHTING, STEP LP, RH
YEL2922-1	S0	SPLICE	1 12	P27 K333-550-101	1 12	S	0.8mm ²	(18)	GXL	LIGHTING, STEP LP, RH
YEL2941-0	J2	87 CEP	1 16	S6 SPLICE	1 16	S	2.0mm ²	(14)	GXL	FLOOD LAMP
YEL2941-1	S6	SPLICE	1 16	J12 P20-1132-1518	17 11	S	2.0mm ²	(14)	GXL	FLOOD LAMP
YEL2941-2	S7	SPLICE	1 16	P100 P20-1134-29-5-0	4 16	S	3.0mm ²	(12)	GXL	SLEEPER FLOOD LAMP
YEL2941-3	S7	SPLICE	1 16	P100 P20-1134-29-5-0	14 16	S	2.0mm ²	(14)	GXL	FLOOD LAMP
YEL2941-4	S7	SPLICE	1 16	S6 SPLICE	1 16	S	2.0mm ²	(14)	GXL	FLOOD LAMP
YEL3961-0	J01	P20-1134-47-3-0	35 11	J150 K333-586-204	C 14	S	0.8mm ²	(18)	GXL	AIR SHUTOFF MANUAL SW SIG
YEL4100-0	S9	SPLICE	1 13	J40 P20-1183-1209	1 12	S	0.8mm ²	(18)	TXL	CVSG POWER
YEL4100-1	S9	SPLICE	1 13	J56 P20-1172-1204	4 13	S	0.5mm ²	(20)	TXL	INSTRUMENTATION, GAUGES POWER
YEL4100-2	S9	SPLICE	1 13	J55 P20-1172-1204	4 13	S	0.5mm ²	(20)	TXL	INSTRUMENTATION, GAUGES POWER
YEL4851-0	J29	P20-1179	1 12	J40 P20-1183-1209	4 12	S	0.8mm ²	(18)	TXL	MCS SUPPLY
YEL5910-0	E4	S0 CEP	1 15	G4 S0 CEP	1 16	S	2.0mm ²	(14)	GXL	WIPER PWR
YEL5910-1	G4	87A CEP	1 16	J70 P20-1223-14-1-0	L 14	S	1.0mm ²	(16)	GXL	WIPER PARK
YEL5911-0	J70	P20-1223-14-1-0	M 14	E4 87A CEP	1 15	S	1.0mm ²	(16)	GXL	WIPER LOW
YEL5912-0	J70	P20-1223-14-1-0	J 14	E4 87 CEP	1 15	S	1.0mm ²	(16)	GXL	WIPER HI
YEL5970-0	J70	P20-1223-14-1-0	H 14	J3 87 CEP	1 16	S	1.0mm ²	(16)	GXL	HORN PWR
YEL7111-0	J1	87 CEP	1 16	J01 P20-1134-47-3-0	4 11	S	1.0mm ²	(16)	GXL	A/C COMPRESSOR CLUTCH
YEL7210-0	F71	K333-432	B 14	J73 P20-1185-1	1 14	S	3.0mm ²	(12)	GXL	HVAC CAB SYSTEM, BLOWER (+)
YEL7221-0	J72	P20-1185	3 14	J71 K333-549-202	A 14	S	0.5mm ²	(20)	TXL	RECIRC DOOR (+)
YEL7226-0	J70	P20-1223-14-1-0	P 14	J72 P20-1185	15 14	S	0.5mm ²	(20)	TXL	WATER VALVE MOTOR (+)
YEL9120-1	E5	87 CEP	1 15	D6 PWR CEP	1 15	S	0.5mm ²	(10)	GXL	TRAILER STOP LAMP PWR
YEL9120-2	I11	SPLICE	1 15	D6 CEP	1 15	S	0.5mm ²	(10)	GXL	TRAILER STOP LAMP PWR
YEL9120-3	P101	P20-1134-09-5-0	S 16	I11 SPLICE	1 15	S	0.8mm ²	(8)	GXL	TRAILER STOP LAMP PWR
YEL9130-0	G6	87 CEP	1 16	D7 PWR CEP	1 15	S	3.0mm ²	(12)	GXL	MARKER/CLEARANCE LAMP
YEL9130-1	D7	CEP	1 15	P100 P20-1134-29-5-0	2 16	S	3.0mm ²	(12)	GXL	TRAILER MARKER LAMP

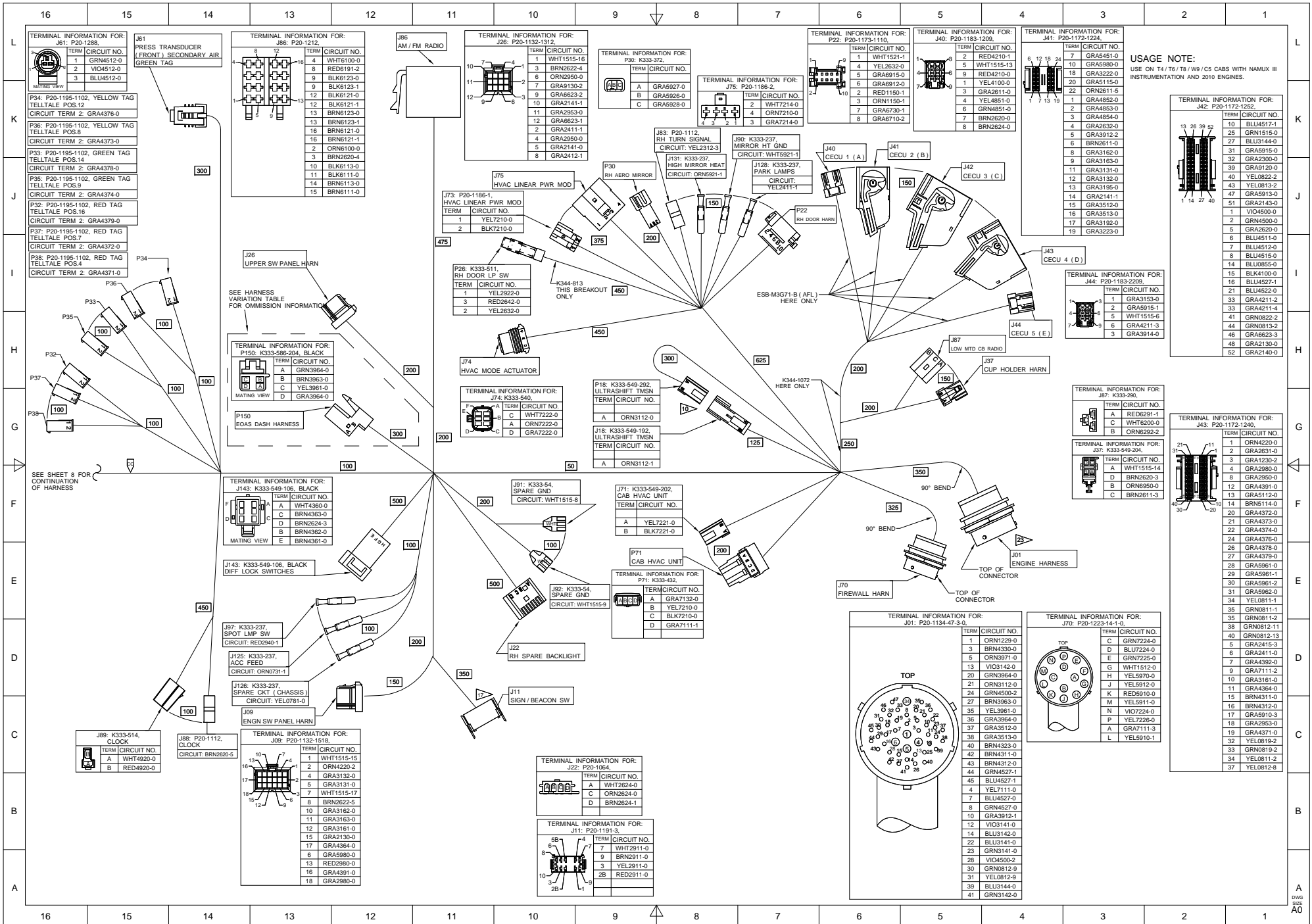


USAGE NOTE:
USE ON T4/T6/T8/W9/C5 CABS WITH NAMUX III INSTRUMENTATION AND 2010 ENGINES.

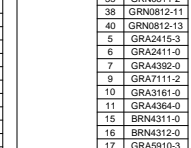
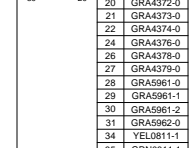
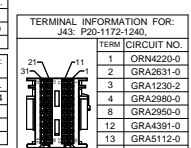
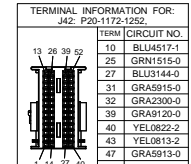


16 15 14 13 12 11 10 9 8 7 6 5 4 3 2 1

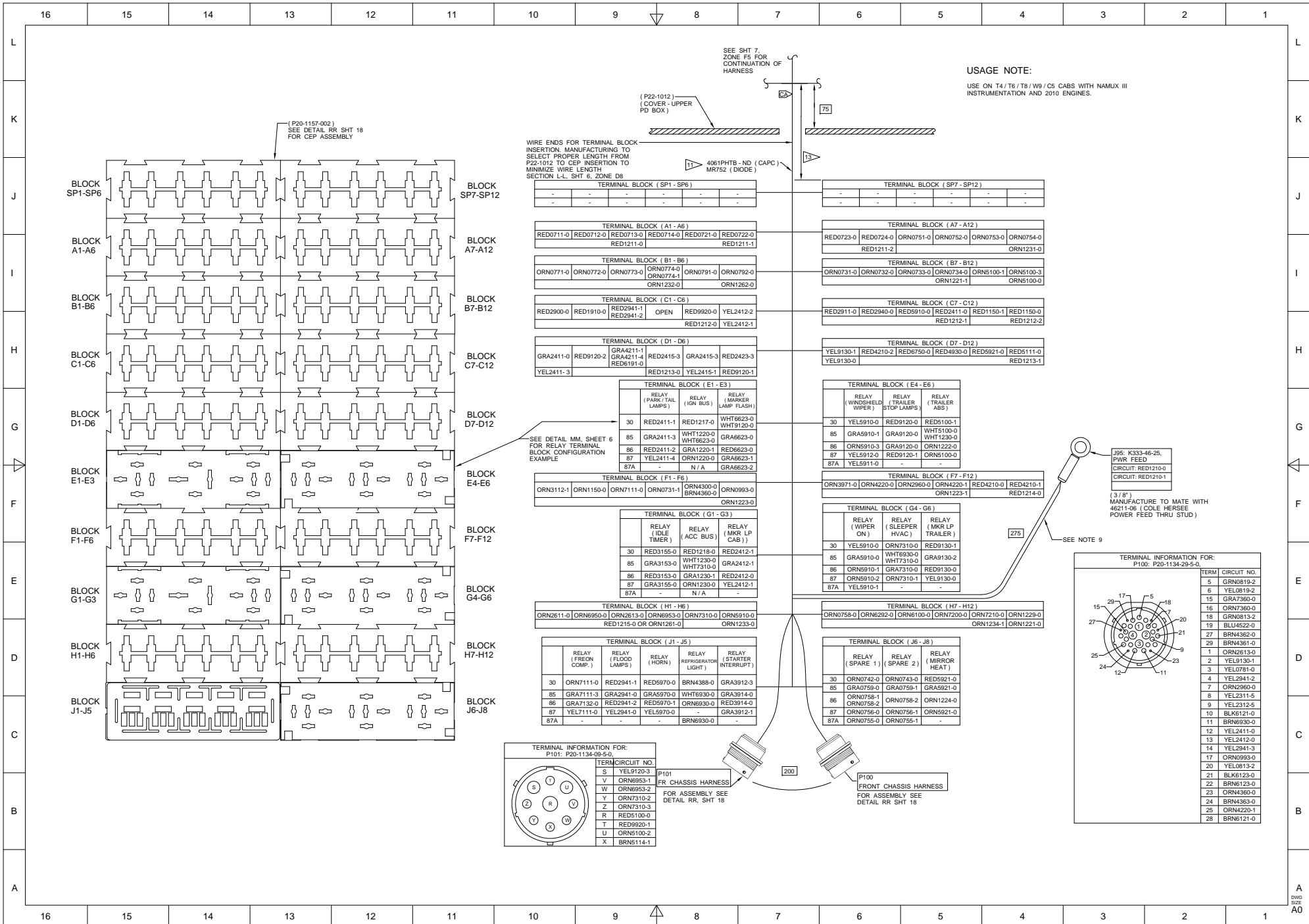
© 2009 PACCAR Inc - All Rights Reserved - The information contained in this drawing is proprietary to PACCAR. Reproduction, in whole or in part, by any means is strictly prohibited without prior written authorization from PACCAR Inc.



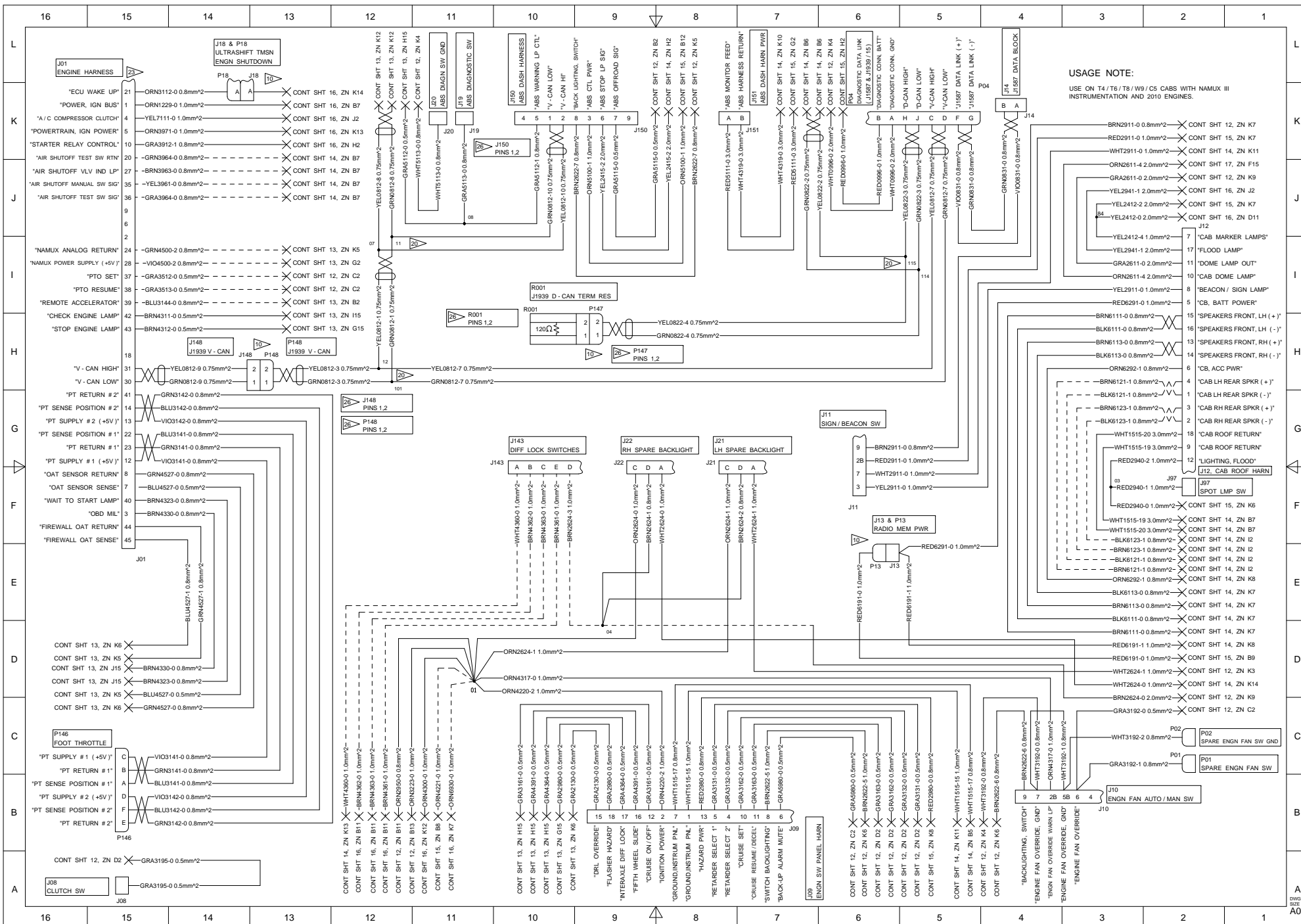
USAGE NOTE:
USE ON 14 TO 18 / W9 / C5 CABS WITH NAMU III INSTRUMENTATION AND 2010 ENGINES.



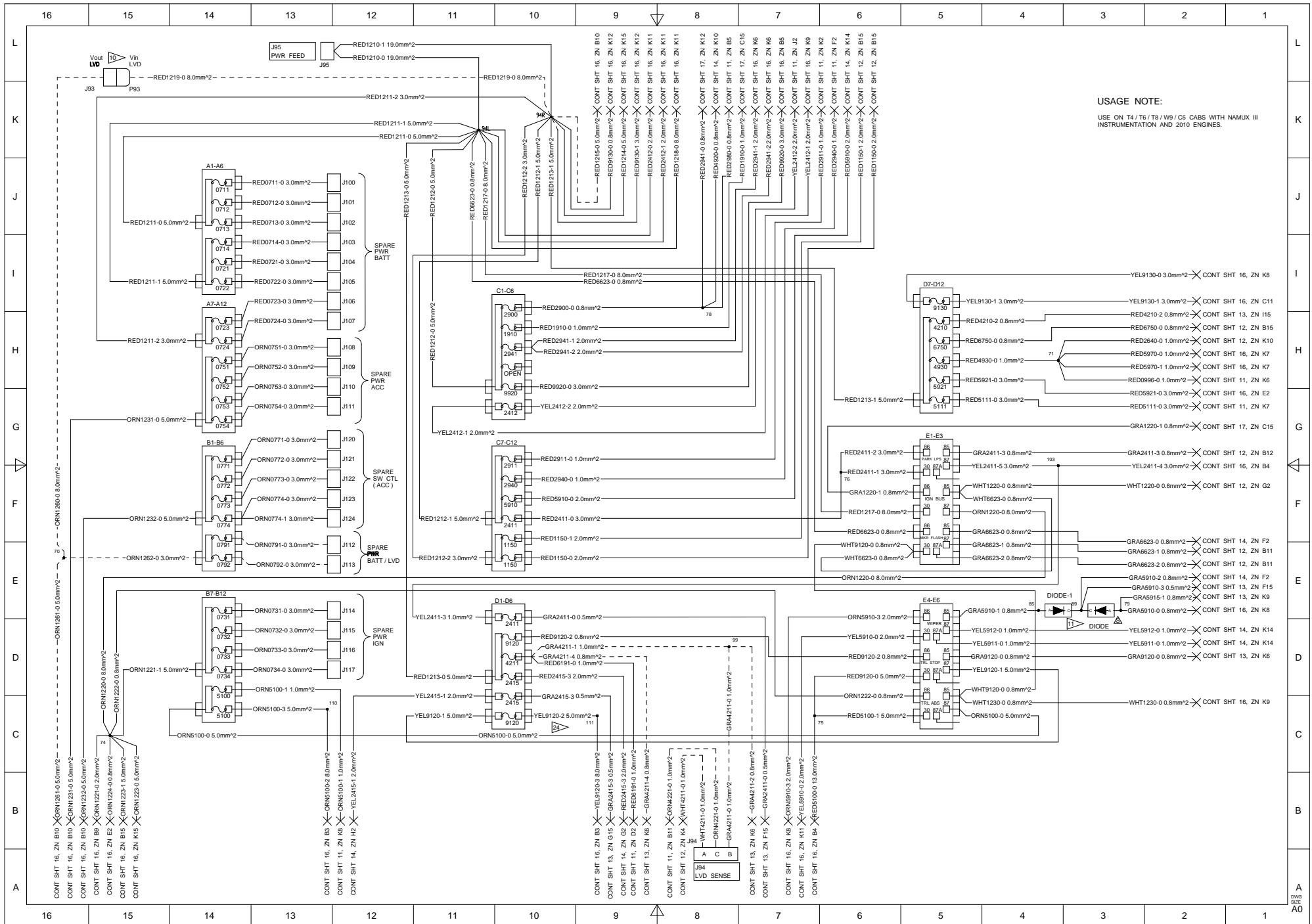
© 2009 PACCAR Inc - All Rights Reserved - The information contained in this drawing is proprietary to PACCAR. Reproduction, in whole or in part, by any means is strictly prohibited without prior written authorization from PACCAR Inc.



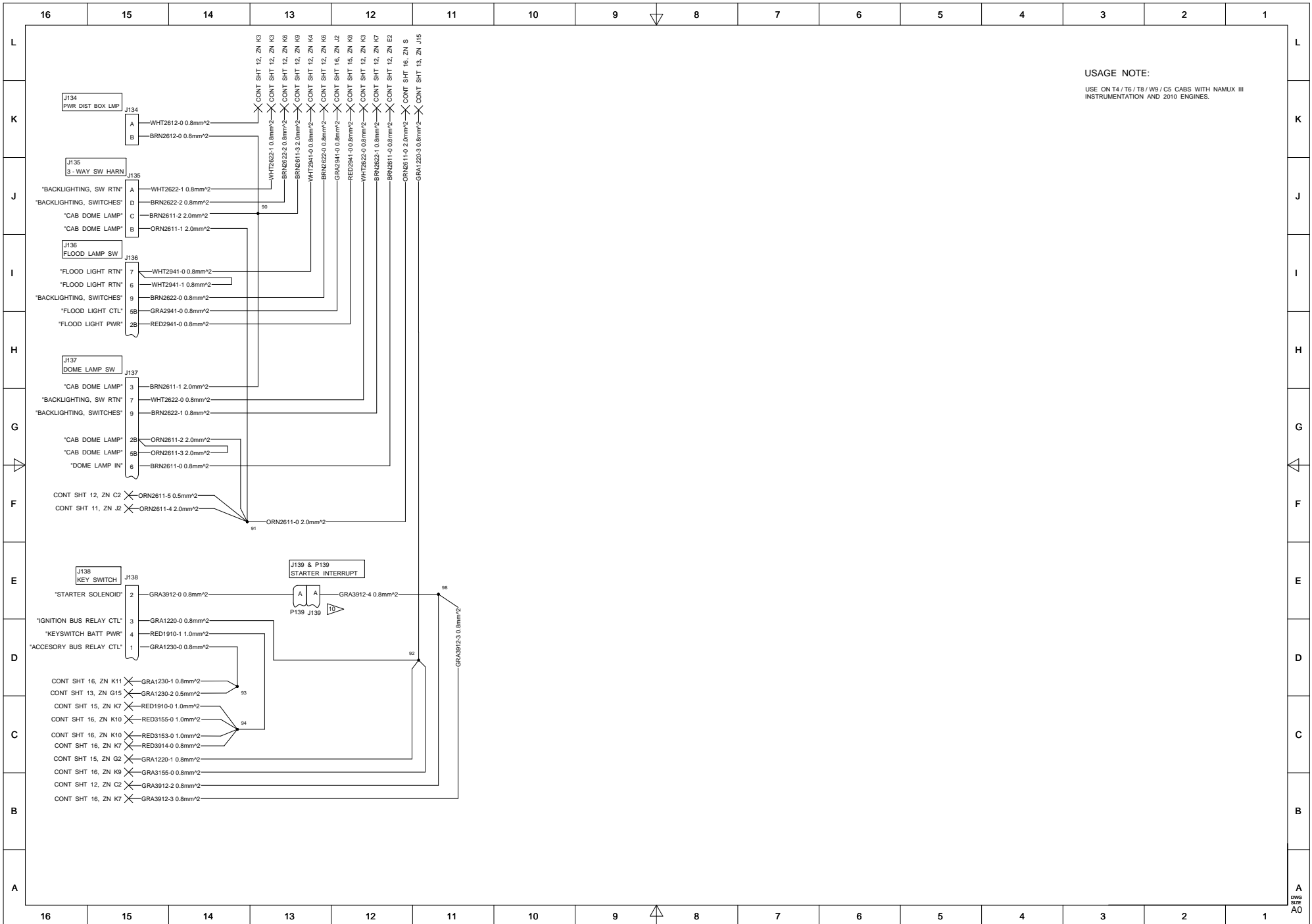
© 2009 PACCAR Inc - All Rights Reserved - The information contained in this drawing is proprietary to PACCAR. Reproduction, in whole or in part, by any means is strictly prohibited without prior written authorization from PACCAR Inc.



© 2009 PACCAR Inc - All Rights Reserved - The information contained in this drawing is proprietary to PACCAR. Reproduction, in whole or in part, by any means is strictly prohibited without prior written authorization from PACCAR Inc.



© 2009 PACCAR Inc - All Rights Reserved - The information contained in this drawing is proprietary to PACCAR. Reproduction, in whole or in part, by any means is strictly prohibited without prior written authorization from PACCAR Inc.



© 2009 PACCAR Inc - All Rights Reserved - The information contained in this drawing is proprietary to PACCAR. Reproduction, in whole or in part, by any means is strictly prohibited without prior written authorization from PACCAR Inc.

