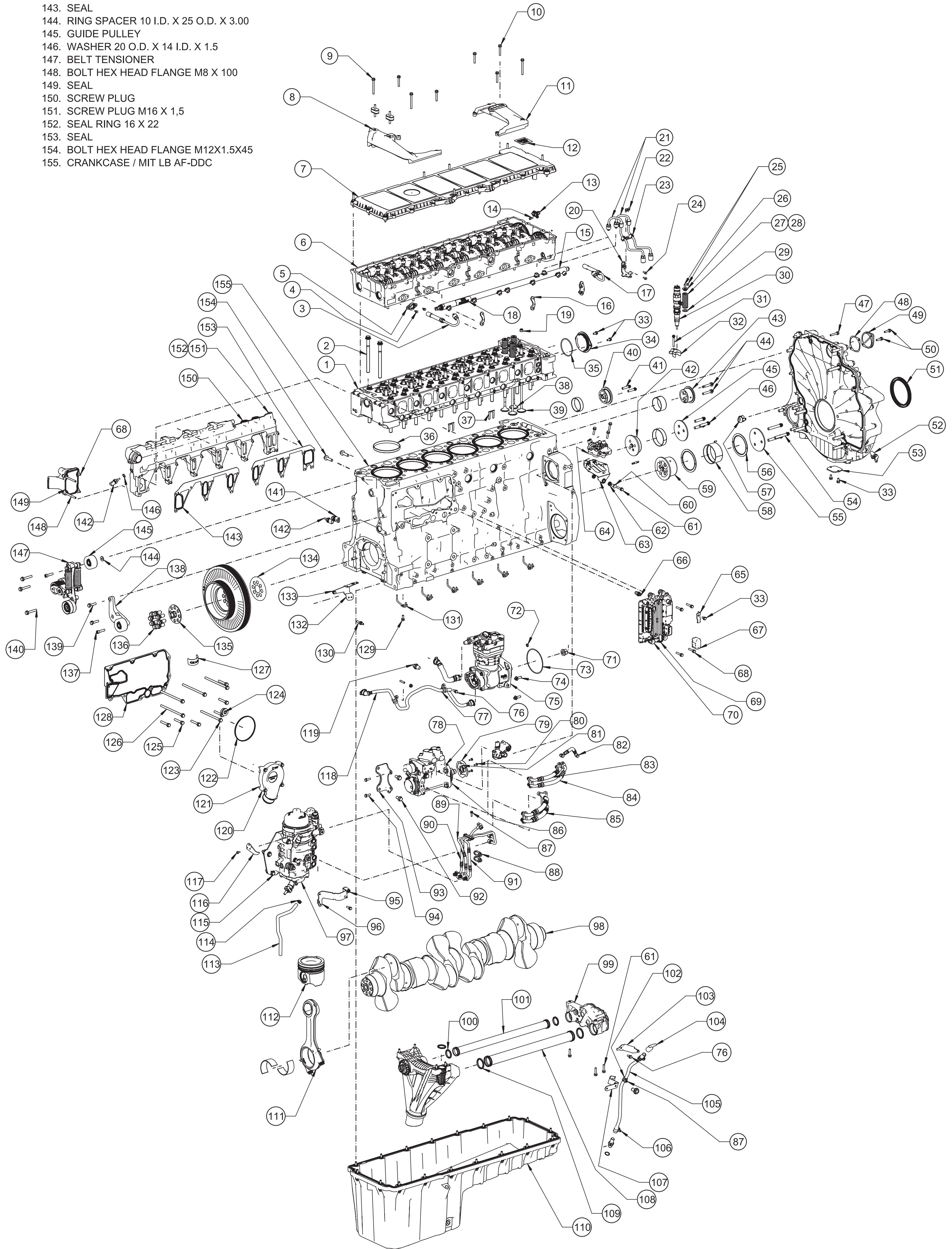


DD15 GHG17 (front)

1. CYLINDER HEAD / W/O VALVES, SH.0 AND SF
2. BOLT CYLINDER HEAD
3. HIGH-PRESSURE LINE
4. SCREW HEX M6 X 25
5. SEALING FOR INJECTOR LINE
6. CAMSHAFT HOUSING COMPL-MY16
7. CYLINDER HEAD COVER
8. FRONT ASSEMBLY - AIR FILTER SUPPORT BRACKET
9. BOLT HEX HEAD FLANGE M8X1.25X80
10. HEX SCREW M 8X50
11. REAR AIR FILTER SUPPORT BRACKET
12. WARNING SIGN-ENGINE LIFTING
13. SPEED SENSOR CAMSHAFT
14. SCREW M 6 X 16
15. PRESSURE ACCUMULATOR
16. TENSIONING BRACKET
17. HIGH-PRESSURE LINE
18. WARNING SIGN-HIGH PRES. FUEL
19. VALVE STEM SEAL
20. BRACKET
21. HIGH-PRESSURE LINE
22. HEXHDBOLT M 6X 12
23. BRACKET HIGH PRESSURE FUEL LINES
24. SCREW HEX M 6X 16
25. VALVE COLLAR
26. VALVE SPRING CAP
27. SPRING VALVE
28. SPRING VALVE
29. WASHER VALVE SPRING CYLINDER HEAD
30. LU INJECTOR C3.27 HDE
31. BIHEXAGONAL BOLT
32. TENSIONING BRACKET INJECTOR
33. BOLT HEX HEAD FLANGE M8X1.25X16
34. CLOSING COVER
35. O-RING
36. CSR 1.5MM TPR L161 DEL 120XC
37. CLAMPING YOKE MALE CONNECT 12 PIN
38. EXHAUST VALVE
39. INTAKE VALVE
40. BEARING JOURNAL / 5
41. SCREW DOUBLE HEX M10 X 1.5 X 45
42. BEARING JOURNAL / 2
43. BEARING JOURNAL / 3
44. SCREW DOUBLE HEX M10 X 1.5 X 60
45. BEARING CAP / 2
46. SCREW DOUBLE HEX M12 X 1.5 X 55
47. HEX SCREW M8 X 45
48. PROFILE SEAL
49. CLOSING COVER
50. BOLT HEX HEAD FLANGE M 8X 30
51. RADIAL SHAFT SEALING RING
52. SENSOR CRANKSHAFT SPEED 40-7000 RPM
53. TIMING CASE COVER
54. SCREW DOUBLE HEX M12 X 1.5 X 83.5
55. BEARING CAP / 1
56. THRUST WASHER
57. CLOSING COVER
58. IDLER GEAR / 1
59. BEARING JOURNAL / 1
60. COLLAR BUSHING (FOR MSU ISOLATION)
61. BOLT HEX HEAD FLANGE M8 X 35
62. ELASTOMER BEARING
63. BRACKET / MSU
64. DOSER
65. BRACKET
66. THREADED COUPLINGS (COOLANT DRAIN)
67. COVER PROTV 21-WAY MCM CAP
68. BOLT HEX HEAD FLANGE M8X1.25X40
69. MCM2.1-D3-HDEP-US-ROM-MY16
70. BUFFER FOR BREAKOUT
71. NUT HEX W/ FLANGE M20X1.5-LH
72. O-RING
73. O-RINGS, TOROIDAL SEALING RINGS
74. HXR D SCREW MBN 10143-M10X 30
75. AIR COMPRESSOR
76. BOLT HEX HEAD FLANGE M 8X 20
77. CLAMP N 16016-BRSU 15/20
78. HIGH-PRESSURE TRANSFER PUMP
79. TIMING PLATE
80. SCREW M6 X 16
81. HEXAGON NUT
82. FUEL LINE LP D2 DPM2
83. FUEL LINE
84. FUEL LINE MY16
85. FUEL LINE
86. BOLT HEX HEAD FLANGE M10X 35
87. HEX SCREW M6 X 20
88. CONNECTION FITTING
89. FUEL LINE
90. FUEL LINE
92. SCREW M12 X 1.5 X 25
93. GEN II HPP BRACKET
94. BOLT HEX HEAD FLANGE M8 X 1.25 X 25
95. NUT M 8
96. BRACKET
97. FUEL FILTER COMPL / DDC
98. CRANKSHAFT PAGE 0 FF.
99. OIL PUMP COMPL
100. O-RING / PRESSURE PIPE
101. OIL-PRESSURE PIPE
102. P-CLIP N 16016-B RSGU 15/ 15
103. HALTER BRACKET
104. OIL DIPSTICK-FRONT SUMP PLASTIC PAN
105. OIL DIPSTICK TUBE- FRONT SUMP
106. CLAMP HOSE 12-20 I.D.
107. BRACKET
108. OIL SUCTION PIPE
109. O-RING / SUCTION PIPE
110. OIL SUMP / FRONTSUMPF
111. CONNECTING ROD 14.8L
112. PISTON-MY16
113. WATER DRAIN HOSE
114. SINGLE-EYE CLAMP
115. BOLT HEX HEAD FLANGE M10X1.5X55
116. PROTECTIVE COVER PRESS.SENSOR
117. BOLT HEX HEAD FLANGE M6X1.0X12
118. COOLANT LINE
119. FITTING SCREW-IN
120. THERMOSTAT

121. BOLT HEX HEAD FLANGE M8X1.25X50
122. SEAL
123. SCREW HEX M10 X 160-10.9
124. SCREW PLUG M33 X 2
126. BOLT HEX HEAD FLANGE M10 X 1.5 X 180
127. STICKER / MOTOROEL
128. GASKET SH.0 AND OTHER
129. HEX SCREW M8 X 20
130. STUD WITH METAL END
131. OIL SPRAY NOZZLE
132. BRACKET HARNESS 10 PIN CONNECTOR
133. BOLT HEX HEAD FLANGE M8X1.25X12
134. OIL SLINGER
135. DRIVING PLATE
136. HEXAGON HEAD BOLT M16 X 1.5 X 34
137. BOLT M10X40
138. BRACKET / IDLER PULLEY
139. BOLT HEX HEAD FLANGE M10X1.5X40
140. BOLT HEX HEAD FLANGE M10X1.5X60
141. SENSOR OIL PRESSURE
142. SENSOR TEMPERATURE -40 TO 130 DEG C
143. SEAL
144. RING SPACER 10 I.D. X 25 O.D. X 3.00
145. GUIDE PULLEY
146. WASHER 20 O.D. X 14 I.D. X 1.5
147. BELT TENSIONER
148. BOLT HEX HEAD FLANGE M8 X 100
149. SEAL
150. SCREW PLUG
151. SCREW PLUG M16 X 1,5
152. SEAL RING 16 X 22
153. SEAL
154. BOLT HEX HEAD FLANGE M12X1.5X45
155. CRANKCASE / MIT LB AF-DDC



DD15 GHG17 (rear)

- 156 CONNECTING PIPE
- 157 COOLANT LINE
- 158 CLAMP
- 159 EXHAUST GAS HOSE
- 160 EXHAUST GAS RECIRCULATION LINE
- 161 DIFF PRESSURE SENSOR
- 162 BOLT HEX HEAD FLANGE M6X1.0X25
- 163 BOLT HEX HEAD FLANGE M8X1.25X60
- 164 BEAM MY17
- 165 MOLDED HOSE
- 166 BEADED METAL SEAL
- 167 CRANKCASE COVER FRT
- 168 BOLT HEX HEAD FLANGE M10X1.5X30
- 169 RADIAL SHAFT SEALING RING
- 170 EXHAUST GAS RECIRCULATION LINE
- 171 PIPE CLAMP
- 172 SEAL EXHAUST MANIFOLD GASKET 3 PORT
- 173 SEAL EXHAUST MANIFOLD GASKET 3 PORT
- 174 EXHAUST MANIFOLD MULTI-PIECE CENT.PART
- 175 EXHAUST GAS RECIRCULATION COOLER
- 176 HOLLOW SCREW N 15036-A10
- 177 BANJO UNION
- 178 BEAM
- 179 BOLT HEX HEAD DBL 4550.00 L12
- 180 HEAT SHIELD
- 181 SCREENING PLATE / AKMT
- 182 HEXAGONAL HEAD SCREW WITH FLANGE
- 183 TEMPERATURE SENSOR / INTAKE AIR
- 184 INTAKE MANIFOLD CLEAN-AIR
- 185 CLAMP MBN 10223-130-150X13-SW8-W3
- 186 EXHAUST-GAS TURBOCHARGER
- 187 SCREENING PLATE MY16
- 188 BASE PLATE EXH.GAS-T-CHRGR MY16
- 189 BRACKET EXH.GAS-T-CHRGR MY16
- 190 SCREW HEX HEAD W/ FLANGE M8 X 16 X 12
- 191 GASKET, EXHAUST PIPE
- 192 HEX SCREW MBN 10105- M8 X 50
- 193 BRACKET / CABLEPLUG MY16
- 194 INJECTION VALVE ASM/HC DIV3
- 195 STUD THREADED BOTH ENDS M10X37X12X22
- 196 METAL SEAL
- 197 NUT PREVAILING TORQUE TYPE
- 198 OIL PRESSURE LINE EXH.GAS-T-CHRGR-MY16
- 199 OIL RETURN LINE
- 200 SEALS FOR OVAL FLANGES
- 201 CLOSING COVER
- 202 O-RING 40 I.D. X 2
- 203 O-RING 76 I.D. X 3
- 204 BOLT HEX HEAD FLANGE M10X1.5X90
- 205 POSITION SENSOR / NOCKENWELLE
- 206 HEXAGON NUT
- 207 PULL ROD
- 208 LEVER / AGR-STELLER MY16
- 209 FITTING - COOLANT RETURN
- 210 COOLANT LINE
- 211 COOLANT LINE
- 212 BUSH WITHOUT CHAMFER MY16
- 213 SPACER BUSH MY16
- 214 SCREW-IN FITTING
- 215 WASHER 10 X 16
- 216 HOLLOW SCREW
- 217 COOLANT LINE
- 218 BOLT HEX HEAD FLANGE M10X1.5X20
- 219 BRACKET
- 220 COOLANT LINE
- 221 FUEL LINE
- 222 CLAMP N 16016-B RSGU 6/ 20
- 223 OIL SEPARATOR MY16
- 224 ELASTOMER-METAL SEAL
- 225 PROTECTING RING
- 226 SCREW IN FITTING
- 227 BEARING COVER / 4
- 228 DD15/16 COLD-AIR BOOST PIPE BRACKET
- 229 WASHER 13 X 27 X 8
- 230 SPACER TUBE
- 231 PROTECTIVE COVER / COMBI SENSOR
- 232 PRESSURE- AND TEMPERATURE SENSOR
- 233 EXHAUST GAS RECIRCULATION LINE-MY16
- 234 SUPPORT BRACKET EGR COLD PIPE
- 235 AIR INTAKE CONNECTOR
- 236 CHARGE AIR PIPE / COLD PA
- 237 SCREW COLLAR M8 48X13.3
- 238 GASKET CHARGE-AIR-PIPE
- 239 INTAKE MANIFOLD HARNESS BRACKET
- 240 BOLT COLLAR M8 103.5X13.3
- 241 BOLT HEX FLANGE HEAD M6X1.0X16
- 242 TEMPERATURE SENSOR-MY16
- 243 CHARGE AIR MANIFOLD MY16
- 244 SEAL - INTAKE MANIFOLD GASKET

