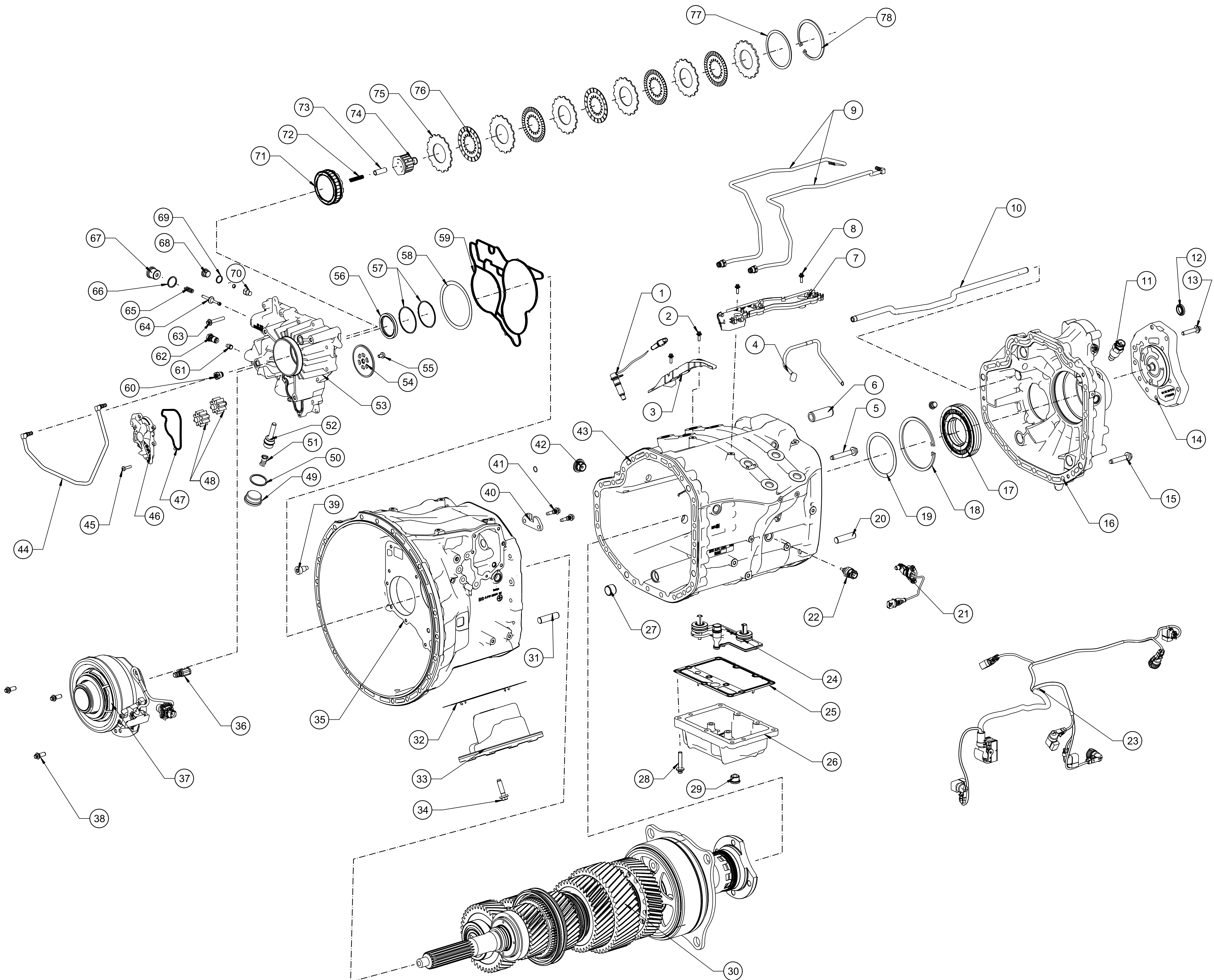


- 1.ROTATIONAL SPEED SENSOR
- 2.HXRD SCREW MBN 10143-M 6 DTX 19-10.9
- 3.BRACKET
- 4.VENT LINE
- 5.COMBI HEXAGON HEAD BOLT
- 6.PIN ER CHAMFERS
- 7.BRACKET
- 8.HXRD SCREW MBN 10143-M 6 DTX 19-10.9
- 9.COMPRESSED AIR LINE
- 10.OIL PIPE A162
- 11.COUNTING WHEEL PICKUP
- 12.GASKET
- 13.HXRD SCREW MBN 10143-M10X 50-10.9
- 14.CLOSING COVER
- 15.COMBI HEXAGON HEAD BOLT
- 16.TRANSMISSION HOUSING
- 17.ANNULAR BALL BEARING
- 18.RETAINING RING DIN 472-150X4 DBL8400.00
- 19.PLANE PARALLEL WASHER
- 20.PARALLEL PIN LEL PINS WITH FLAT POINT
- 21.ROTATIONAL SPEED SENSOR
- 22.TEMPERATURE SENSOR
- 23.ELECTRICAL WIRING HARNESS
- 24.OIL SCREEN
- 25.SEALING FLANGE (GASKET)
- 26.CLOSING COVER
- 27.OIL PIPE (BUSHING)
- 28.HXRD SCREW MBN 10143-M10X50-10.9-MKL
- 29.SCREW PLUG COLLAR, HEX SOCKET, CYL T
- 30.TRANSMISSION GEARS
- 31.PARALLEL PIN LEL PINS WITH FLAT POINT
- 32.SEALING FLANGE (GASKET)
- 33.CLOSING COVER
- 34.COMBI HEXAGON HEAD BOLT
- 35.TRANSMISSION HOUSING FRT
- 36.CLUTCH PROTECTION VALVE
- 37.CLUTCH RELEASE PNEUM. CPCA SAE1 SFTP
- 38.HXRD SCREW MBN 10142-M10X 25-10.9
- 39.GUIDE PIN
- 40.GUIDE PLATE
- 41.SCREW HEX SCREWS WITH COLLAR
- 42.SCREW PLUG
- 43.TRANSMISSION HOUSING CTR
- 44.COMPRESSED AIR LINE
- 45.HXRD SCREW MBN 10226-M 6X 25- 8.8

- 46.CAP OIL-PMP
- 47.OIL PUMP COVER GASKET
- 48.OIL PUMP GEAR
- 49.SCREW PLUG DIN 908-M42X1,5-ST DBL8451.
- 50.SEAL RING DIN 7603-A 42 X 49-AL
- 51.PRESSURE SPRING
- 52.VALVE ACTUATOR
- 53.COVER DRIVE SHAFT
- 54.DRIVE GEAR OIL-PMP
- 55.HEXALOBULRBOLT MBN 10226-M 8X12- 8.8-MKL
- 56.SHAFT LIP TYPE SEAL
- 57.SEALING RING
- 58.COMPENSATING DISC
- 59.GASKET COVER DRV.SHAFT
- 60.SOCKET UNION
- 61.VENT VALVE
- 62.CLOSING COVER (VENT VALVE)
- 63.HXRD SCREW MBN10143-M 8X50 - 8.8-MKL
- 64.VALVE ACTUATOR
- 65.PRESSURE SPRING
- 66.SEAL RING DIN 7603-A 27 X 32-CU
- 67.SCREW PLUG
- 68.SCREW PLUG DIN 908-M18X1,5-ST DBL9440.
- 69.SEAL RING DIN 7603-A 18 X 22-CU
- 70.VALVE ACTUATOR
- 71.PISTON FOR HYDRAULIC CYLINDER
- 72.PRESSURE SPRING
- 73.CATCH BOLT
- 74.PLATE SUPPORT
- 75.OUTER OIL CONTROL RING
- 76.INNER OIL CONTROL RING
- 77.THRUST PLATE
- 78.RETAINING RING
- 79.CLOSING COVER SHAPES
- 80.SNAP RING DIN 7993-A 25 DBL8400.00
- 81.THRUST WASHER
- 82.BEARING BUSH
- 83.LOCKING BRACKET
- 84.SHIFT FINGER
- 85.RETAINING RING
- 86.BEARING BUSH
- 87.SELECTOR AND SHIFT ROD
- 88.GASKET
- 89.RETAINING RING DIN 471-38X1,75 DBL8400.0
- 90.BEARING CAP LH

- 91.THRUST WASHER
- 92.CIRCLIP FOR BORE HOLES
- 93.SHIFT LEVER SHAFT
- 94.PRESSURE SPRING
- 95.CATCH BOLT
- 96.SHIFTING SEGMENT
- 97.HEXALOBULRBOLT MBN 10226-M 8X25-10.9-MKL
- 98.PRESSURE PIN/D8.3 3-ECKIG
- 99.GASKET
- 100.HXRD SCREW MBN 10142-M 6X 30- 8.8
- 101.CENTERING SLEEVE
- 102.HXRD SCREW MBN 10143-M 5X 25- 8.8
- 103.VENT CAP
- 104.TRANSMISSION POSITIONER/OHNE ECU
- 105.PRESSURE SENSOR
- 106.HEXALBOLT MBN 10143-M 8X140-8.8-MKL-21X3
- 107.CONTROL UNIT FOR AUTOMATIC GEARSHIFT SYS
- 108.PROTECTIVE CAP
- 109.RETAINING RING DIN 472-65X2,5 DBL8400.00
- 110.COMPENSATING DISC
- 111.O-RING
- 112.SHIFT CYLINDER
- 113.COMPENSATING DISC
- 114.PISTON ROD
- 115.SCREW PLUG DIN 908-M16X1,5-ST DBL9440.
- 116.PRESSURE SPRING
- 117.CATCH BOLT
- 118.SHIFT RAIL
- 119.LOCKING GV/GP
- 120.PISTON ROD
- 121.CONTROL PISTON
- 122.SOLENOID ARMATURE
- 123.O-RING
- 124.SHIFT CYLINDER
- 125.TRAVEL SENSOR
- 126.HXRD SCREW MBN 10143-M10X 50-10.9
- 127.SOCKET UNION
- 128.CATCH BOLT
- 129.PRESSURE SPRING
- 130.SCREW PLUG DIN 908-M16X1,5-ST DBL9440.
- 131.GEAR CONTROL FORK
- 132.BEARING BOLT
- 133.SLIDING BLOCK
- 134.BEARING BOLT
- 135.GUIDE RAIL



- 136.BEARING BOLT
- 137.GEAR CONTROL FORK
- 138.TAPERED ROLLER BEARING
- 139.COUNTERSHAFT
- 140.COUNTERSHAFT GEAR 2ND GEAR
- 141.TWIN COUNTERSHAFT GEAR
- 142.RETAINING RING DIN 471-65X2,5 DBL8400.00
- 143.TAPERED ROLLER BEARING
- 144.HEXSCRMBN10105-M20X1,5X80-10.9-MKL10X10
- 145.THRUST WASHER
- 146.O-RINGS, TOROIDAL SEALING RINGS
- 147.COUPLING FLANGE
- 148.RADIAL SHAFT SEALING RING
- 149.PULSE STAR
- 150.RETAINING PLATE
- 151.WHEEL CARRIER
- 152.RETAINING RING
- 153.RING GEAR
- 154.PLANET CARRIER
- 155.THRUST PLATE
- 156.PLANET GEAR
- 157.THRUST WASHER
- 158.NEEDLE BEARING
- 159.SET SCREW ISO 4027-M 6X 14-45H DBL940
- 160.PLANETARY AXLE
- 161.THRUST WASHER
- 162.THRUST PLATE
- 163.BEARING CAP
- 164.CENTER GEAR
- 165.RETAINING RING DIN 472-65X2,5 DBL8400.00

- 166.SYNCHRONIZER BODY (GEAR)
- 167.TAPERED ROLLER BEARING
- 168.PULSE STAR
- 169.IDLER GEAR REVERSE GEAR
- 170.NEEDLE BEARING
- 171.BEARING BUSH
- 172.SLIDING SLEEVE
- 173.THRUST PLATE
- 174.SYNCHRONIZER BODY
- 175.NEEDLE BEARING
- 176.IDLER GEAR 1ST GEAR
- 177.MAIN SHAFT
- 178.NEEDLE BEARING
- 179.IDLER GEAR 2ND GEAR
- 180.SYNCHRONIZER BODY
- 181.SLIDING SLEEVE
- 182.RETAINING RING FOR SHAFTS
- 183.TAPERED ROLLER BEARING
- 184.HELICAL GEAR
- 185.TAPERED ROLLER BEARING
- 186.COMPENSATING DISC
- 187.SYNCHRONIZING RING
- 188.ANNULAR SPRING/D167
- 189.BAND LINING
- 190.SYNCHRONIZER CONE/D 199
- 191.SLIDING SLEEVE
- 192.TAPERED ROLLER BEARING
- 193.TWELVE-SIDED NUT WITH COLLAR SW41
- 194.HEXAGON SCREW ISO 4017-M10X 25- 10.9 D
- 195.REVERSE IDLER SHAFT

- 196.NEEDLE BEARING
- 197.BUSH
- 198.REVERSE GEAR
- 199.RETAINING RING DIN 472-45X1,75 DBL8400.0
- 200.OIL PIPE
- 201.SHAFT LIP TYPE SEALS-SPECIAL TYPES
- 202.DRIVE SHAFT
- 203.SYNCHRONIZING RING
- 204.NEEDLE BEARING
- 205.HELICAL GEAR
- 206.TAPERED ROLLER BEARING
- 207.DRIVE GEAR

