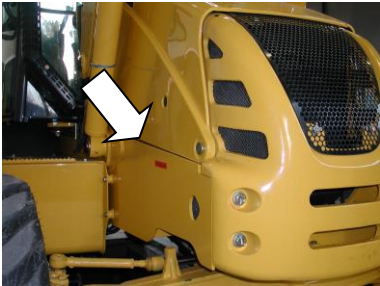


# Identificazione

# Identification: components s/n's

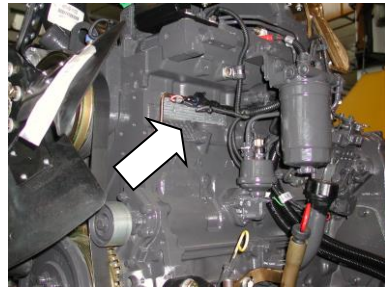
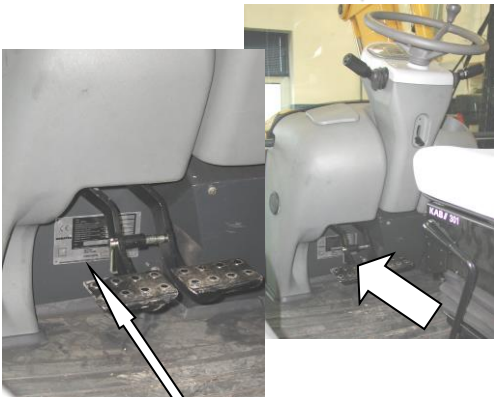
MACHINE SERIAL NUMBER



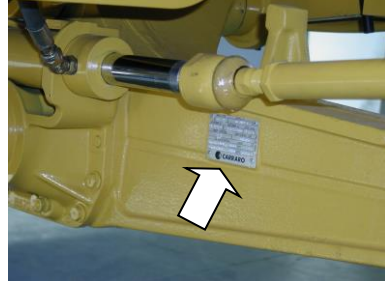
ENGINE SERIAL NUMBER



MACHINE IDENTIFICATION PLATE (location)



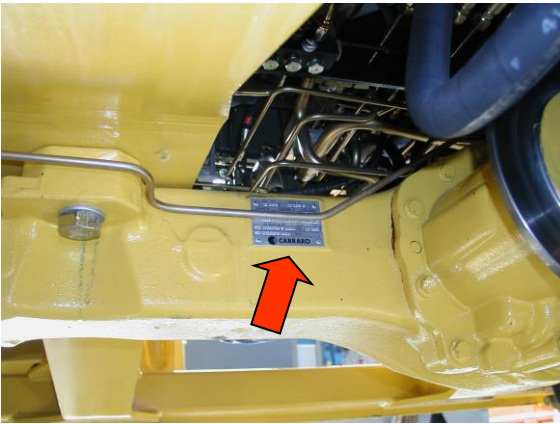
FRONT AXLE SERIAL NUMBER



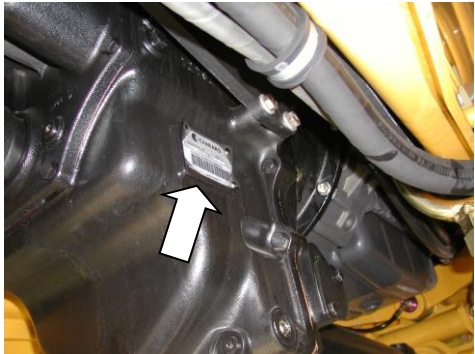
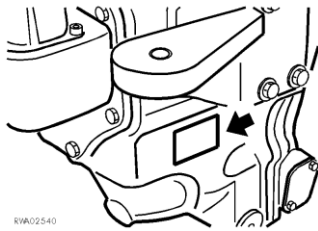
CE	TIPO		[ ]	
	TYPE - MODEL		[ ]	
KOMATSU	NUMERO DI OMOLOGAZIONE		[ ]	
	HOMOLOGATION NUMBER		[ ]	
	DA	kg	A	kg
	FROM		TO	
	CARICO AMMISSIBILE ASSE ANT.		[ ]	
	TOTAL MASS WEIGHT		[ ]	
	DA	kg	A	kg
	FROM		TO	
	CARICO AMMISSIBILE ASSE POST.		[ ]	
	WEIGHT REAR AXLE		[ ]	
	DA	kg	A	kg
	FROM		TO	
	Product Identification Number			
	[ ]			
	PIN			
	[ ]			
	- Massa rimorchiabile: non atto			
	MATRICOLA		[ ]	
	SERIAL NUMBER		[ ]	
	POTENZA MOTORE	kW	ANNO	[ ]
	[ ]		[ ]	
	MANUFACTURED BY KOMATSU UTILITY EUROPE S.p.A. 36025 NOVENTA VIC. (VI) -ITALY			
				27A-16-1184D

Identification: components s/n's

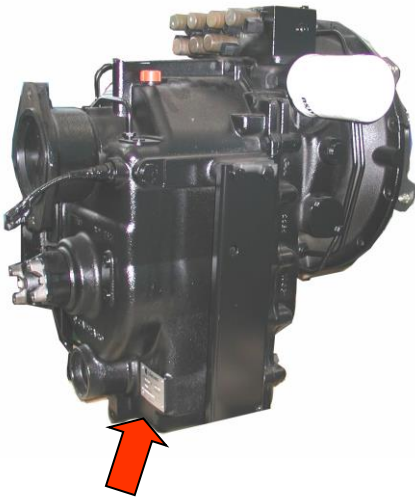
REAR AXLE SERIAL NUMBER



TRANSMISSION TLB1 SERIAL NUMBER



TRANSMISSION TLB2 SERIAL NUMBER



CAB SERIAL NUMBER

