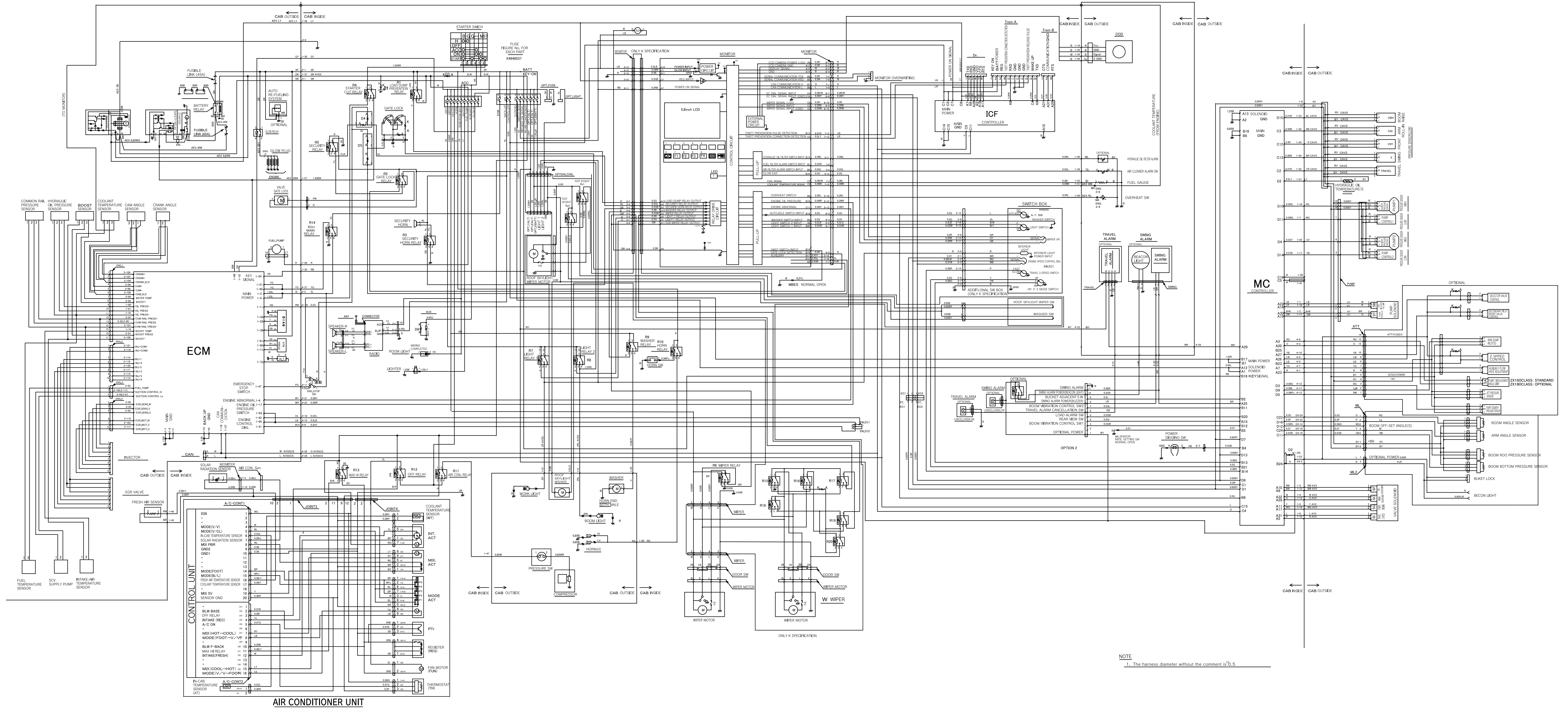


ZAXIS160-3 CLASS/180-3 CLASS ELECTRICAL DIAGRAM



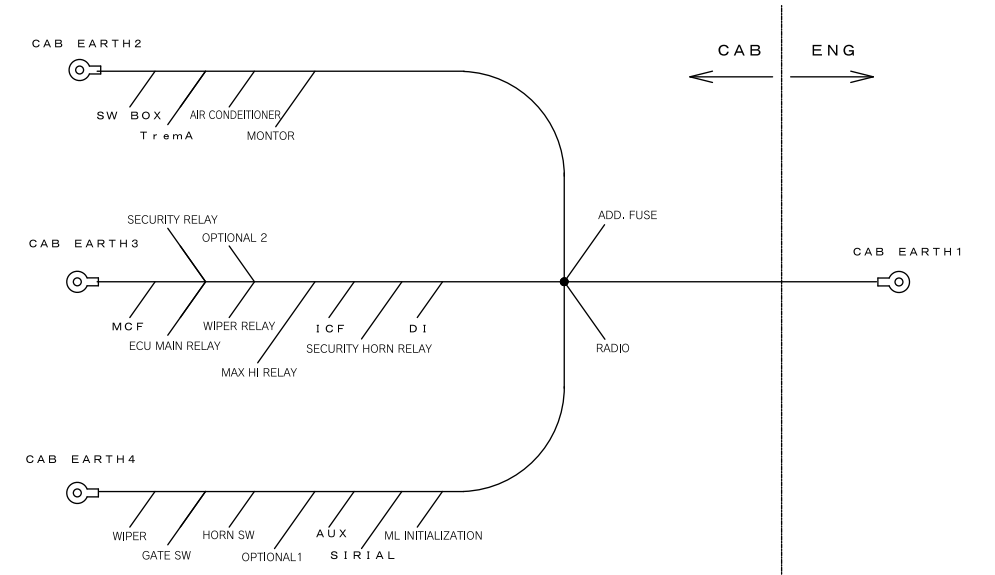
ZAXIS160-3 CLASS/180-3 CLASS CONNECTORS

CAUTION: Parts numbers on the drawing are provided only for reference purpose.
To order parts on the drawing, be sure to consult the Parts Catalog.

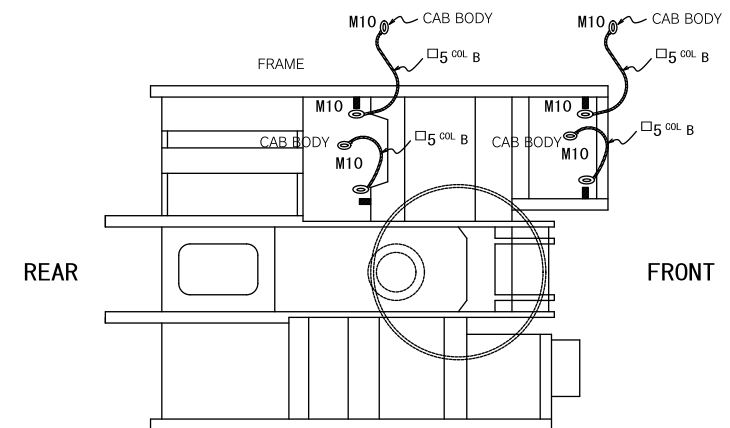
CONNECTOR - TERMINAL USAGE TABLE (HARNESS END CONNECTOR WITHOUT COMMENT)

CAB OUTSIDE						CAB INSIDE						
FUEL GAUGE ML2 YAZAKI Z02F-GY	FRESH AIR SENSOR AMP EIL-1301RIVE 174352-2	PREES. SENSOR(LOW) YAZAKI RV03FB	JA T PAKKARD 1216219	PRESSUR SWITCH SUMMOTO 6189-0533 EQUVALENT GOODS	ARM ANGLE SENSOR BOOM ANGLE SENSOR YAZAKI X03F-GY	WIPER YAZAKI C04FW	SPEAKER SJD PH065-02010	ST_EC1 WWS BUZZER EM_ECT SMING ALARM YAZAKI C02FW	ST_EC2 EC1 EM_ECT YAZAKI C02MW	DIODE YAZAKI 7283-5028	MODE_ACT YAZAKI 7119-3090	THERMOSTAT YAZAKI 7323-8335
GLOW RELAY YAZAKI 7323-2228	SOLENOID YAZAKI 7323-3010	HYDRAULIC OIL TEMPERATURE SENSOR JFC02LP-GY PB187-02326-G	FUEL_PUMP YAZAKI 7233-1824-40	COMPRESSOR YAZAKI 7323-6214-40	PRESSURE SENSOR AMP 174357-2	ENG/H_2 YAZAKI X02MB	SERIAL YAZAKI C03FW	Dr YAZAKI 7323-2064	BZ SUMMOTO 6030-2981	DIODE YAZAKI 6030-0012	WATER TEMPERATURE SENSOR YAZAKI 7322-8326	INT_ACT MIX_ACT YAZAKI 7119-3070
WASHER YAZAKI 7323-2228	SWING ALARM YAZAKI Z04F-GY	ATMOSPHERIC PRESSURE AMP-174357	HORN SET-IP(B)	TRAVEL YAZAKI Z04M-GY	PRESS. SENSOR(HIGH) ADD PUMP3 LOCK AMP E.J. 0.070 3-POLE FEMALE	ENG/H_3 YAZAKI Y02MBV	OPTIONAL POWER SOURCE YAZAKI M06-FW	OPT_LIGHT YAZAKI 7123-2815	HORN_SW AMP 174056-2	SOLAR RADIATION SENSOR YAZAKI 7283-8622	REGISTER YAZAKI 7383-6154	AT YAZAKI 7323-8326
AUTO LUB CAB HARNESS2 YAZAKI X02FB	CAN DT06-3S-CE05	F/LINK YAZAKI 7322-4125-50	ML YAZAKI Z08F-GY	ROTAION SENSOR BOOM DUMPING YAZAKI Z02F-GY	JOINT1 SJD-DSD-06F-W	JOINT4 YAZAKI M04-MW	OPT_FUSE YAZAKI L02FB	EG_STOP YAZAKI C06FB	AIR CONDITIONER PRESSURE SWITCH SUMMOTO 6189-0533	FAN YAZAKI 7323-2228	PTI YAZAKI 7323-8040	
CAB HARNESS_3 YAZAKI Y02FGY	ATT YAZAKI 7123-7544-40(SWP)	STARTER RELAY PH065-03010 7323-3010	DIAG YAZAKI Z06F-GY	ALTERNATOR (ENGINE OIL PRESSURE SWITCH) YAZAKI 7323-1424-40 YAZAKI X02FW (BR) (330)	BUCKET LOCK YAZAKI Z02M-GY	JOINT8 YAZAKI C04FW	GATE_VAL YAZAKI Z02FGY	GATE_SW YAZAKI Z03FGY	GENERAL RELAY SUMMOTO 6096-1493 (SINGLE GOODS)	RADIO YAZAKI 7123-1402		
ENG_3 SUMMOTO 6195-0021	ENG_2 SUMMOTO 6195-0149	PUMP(H (ENG SIDE) ENG_1 YAZAKI 7123-7544-40(SWP)	EC ANGLE SENSOR YAZAKI Z03F-GY		MCF_A AMP 179681-6	MCF_C AMP 179680-5	JOINT5 YAZAKI C16FW	A/C_CONT1 AMP 179057-6				
ENG_5 YAZAKI 7222-4210-4 (Y01MBV)	ENG_4 SUMMOTO 6195-0051				MCF_B AMP 179679-6	MCF_D AMP 179678-6	JOINT6 YAZAKI C16FB	A/C_CONT2 AMP 179054-6				
CAB HARNESS4 MITSUBISHI NMWP 32M-GY	ECU_2 AMP CT-1473252-1				ENG/H_4 MITSUBISHI NMWP 32F-GY	MONITOR C AMP 174045-2	JOINT7 YAZAKI C16FBR	OPT2 YAZAKI C12FW				
CAB HARNESS1 YAZAKI 7183-5055-40	ECU_1 AMP CT-1473244-1				ENG/H_1 YAZAKI 7283-5055-40	Trem_A MONITOR B AMP 175967-2	JOINT2 YAZAKI C16MW	ICF_C AMP 353027-1				
						Trem_B MONITOR A AMP 175966-2	JOINT3 YAZAKI C16MB	ICF_A AMP 353031-1				

DETAIL 1



DETAIL 2



NOTE

1. Systematize the HARNESS GND LINE into two groups of the electric power lines and the control system lines.
Caulk both line ends with M8 round hole terminals. Then, connect both lines to the S-reinforcement plate. (See detailed figure-1)
2. Provide the separate ground line connecting the S-reinforcement plate, cab, and frame with a 5 mm-diameter wire. (See detailed figure-2)
3. Use 0.5 mm-diameter wire harnesses unless specified.
4. Before placing an order for a part by means of the drawing No., make sure the drawing update version, and its applicable machine models by referring to the Parts Catalog

ZAXIS160-3 CLASS/180-3 CLASS ENGINE HARNESS

CAUTION: Parts numbers on the drawing are provided only for reference purpose. To order parts on the drawing, be sure to consult the Parts Catalog.

NO.	SIZE	COLOR	FROM	TO	COMMENT
3	0.5	L-B	CAB/H.1-1	PUMP/H-5	
4	0.5	L-R	CAB/H.1-10	PUMP/H-5	
5	0.5	R-R	CAB/H.1-2	PUMP/H-7	
6	0.5	G-W	CAB/H.1-11	PUMP/H-8	
7	0.5	R-W	CAB/H.1-3	SF-1	AVX
8	0.5	B-W	CAB/H.1-12	SF-2	AVX
9	0.5	W	CAB/H.1-4	SC-1	AVX
10	0.5	G	CAB/H.1-13	SC-2	AVX
11	0.5	Y	CAB/H.1-5	SG-1	AVX
12	0.5	R-G	CAB/H.1-14	SG-2	AVX
13	0.5	L	CAB/H.1-6	S1-1	AVX
14	0.5	R	CAB/H.1-15	S1-2	AVX
15	0.5	R	CAB/H.4-1	ATT-6	
16	0.5	Y-G	CAB/H.4-7	ENG-1	
17	0.5	O	CAB/H.4-3	PUMP/H-10	
18	0.5	R-G	CAB/H.4-8	PUMP/H-11	
19	0.5	R-G	CAB/H.4-26	TRAVEL-1	
20	0.5	R-G	CAB/H.1-16	PUMP/H-3	
21	0.5	R-G	CAB/H.1-33	CRH-2	CAVS
22	0.5	Y-R	CAB/H.1-32	TRAV-2	CAVS
23	0.5	G-Y	CAB/H.1-25	PUMP/H-4	
24	0.5	R-B	CAB/H.1-42	CAL-2	CAVS
25	0.5	R-G	CAB/H.1-7	PUMP/H-1	
26	0.5	L-B	CAB/H.4-17	ATT-2	
27	0.5	R-W	CAB/H.4-13	ATT-1	
28	0.5	Y-B	CAB/H.1-17	PUMP/H-2	
29	0.5	B-R	CAB/H.1-43	X-2	CAVS
30	0.5	B-G	CAB/H.4-12	ATT-3	
31	0.5	O-B	CAB/H.4-19	ML-5	
32	0.5	G	CAB/H.4-24	ML-1	
33	0.5	Y	CAB/H.4-16	ML-4	
34	0.5	R	CAB/H.1-24	FRT-2	CAVS
35	0.5	P	CAB/H.4-23	ML-2	
36	0.5	L-Y	CAB/H.1-51	PUMP/H-20	
37	0.5	W-G	CAB/H.4-14	ML-3	
38	0.5	G-B	CAB/H.4-31	TRAVEL-4	
39	0.5	B	TRAVEL-3		
40	0.5	W-Y	CAB/H.4-32	TRAVEL-1	
41	0.5	L-B	CAB/H.4-30	SWING ALARM-1	
42	0.5	R	P/S-P1-1	JOINT1	OR-1X2SF-2
43	0.5	R	P/S-P2-1	JOINT1	OR-1X2SF-2
44	0.5	R	P/S-P2-3	JOINT1	OR-1X2SF-2
45	0.5	B	P1-1	JOINT1	OR-1X2SF-2
46	0.5	R	P1-2	JOINT1	OR-1X2SF-2
47	0.5	B	P1-3	JOINT1	OR-1X2SF-2
48	0.5	B	P1-4	JOINT1	OR-1X2SF-2
49	0.5	B	P1-5	JOINT1	OR-1X2SF-2
50	0.5	B	P1-6	JOINT1	OR-1X2SF-2
51	0.5	B	P1-7	JOINT1	OR-1X2SF-2
52	0.5	B	P1-8	JOINT1	OR-1X2SF-2
53	0.5	B	P1-9	JOINT1	OR-1X2SF-2
54	0.5	B	P1-10	JOINT1	OR-1X2SF-2
55	0.5	B	P1-11	JOINT1	OR-1X2SF-2
56	0.5	B	P1-12	JOINT1	OR-1X2SF-2
57	0.5	B	P1-13	JOINT1	OR-1X2SF-2
58	0.5	B	P1-14	JOINT1	OR-1X2SF-2
59	0.5	B	P1-15	JOINT1	OR-1X2SF-2
60	0.5	B	P1-16	JOINT1	OR-1X2SF-2
61	0.5	B	P1-17	JOINT1	OR-1X2SF-2
62	0.5	B	P1-18	JOINT1	OR-1X2SF-2
63	0.5	B	P1-19	JOINT1	OR-1X2SF-2
64	0.5	B	P1-20	JOINT1	OR-1X2SF-2
65	0.5	B	P1-21	JOINT1	OR-1X2SF-2
66	0.5	B	P1-22	JOINT1	OR-1X2SF-2
67	0.5	B	P1-23	JOINT1	OR-1X2SF-2
68	0.5	B	P1-24	JOINT1	OR-1X2SF-2
69	0.5	B	P1-25	JOINT1	OR-1X2SF-2
70	0.5	B	P1-26	JOINT1	OR-1X2SF-2
71	0.5	B	P1-27	JOINT1	OR-1X2SF-2
72	0.5	B	P1-28	JOINT1	OR-1X2SF-2
73	0.5	B	P1-29	JOINT1	OR-1X2SF-2
74	0.5	B	P1-30	JOINT1	OR-1X2SF-2
75	0.5	B	P1-31	JOINT1	OR-1X2SF-2
76	0.5	B	P1-32	JOINT1	OR-1X2SF-2
77	0.5	B	P1-33	JOINT1	OR-1X2SF-2
78	0.5	B	P1-34	JOINT1	OR-1X2SF-2
79	0.5	B	P1-35	JOINT1	OR-1X2SF-2
80	0.5	B	P1-36	JOINT1	OR-1X2SF-2
81	0.5	B	P1-37	JOINT1	OR-1X2SF-2
82	0.5	B	P1-38	JOINT1	OR-1X2SF-2
83	0.5	B	P1-39	JOINT1	OR-1X2SF-2
84	0.5	B	P1-40	JOINT1	OR-1X2SF-2
85	0.5	B	P1-41	JOINT1	OR-1X2SF-2
86	0.5	B	P1-42	JOINT1	OR-1X2SF-2
87	0.5	B	P1-43	JOINT1	OR-1X2SF-2
88	0.5	B	P1-44	JOINT1	OR-1X2SF-2
89	0.5	B	P1-45	JOINT1	OR-1X2SF-2
90	0.5	B	P1-46	JOINT1	OR-1X2SF-2
91	0.5	B	P1-47	JOINT1	OR-1X2SF-2
92	0.5	B	P1-48	JOINT1	OR-1X2SF-2
93	0.5	B	P1-49	JOINT1	OR-1X2SF-2
94	0.5	B	P1-50	JOINT1	OR-1X2SF-2
95	0.5	B	P1-51	JOINT1	OR-1X2SF-2
96	0.5	B	P1-52	JOINT1	OR-1X2SF-2
97	0.5	B	P1-53	JOINT1	OR-1X2SF-2
98	0.5	B	P1-54	JOINT1	OR-1X2SF-2
99	0.5	B	P1-55	JOINT1	OR-1X2SF-2
100	0.5	B	P1-56	JOINT1	OR-1X2SF-2
101	0.5	B	P1-57	JOINT1	OR-1X2SF-2
102	0.5	B	P1-58	JOINT1	OR-1X2SF-2
103	0.5	B	P1-59	JOINT1	OR-1X2SF-2
104	0.5	B	P1-60	JOINT1	OR-1X2SF-2
105	0.5	B	P1-61	JOINT1	OR-1X2SF-2
106	0.5	B	P1-62	JOINT1	OR-1X2SF-2
107	0.5	B	P1-63	JOINT1	OR-1X2SF-2
108	0.5	B	P1-64	JOINT1	OR-1X2SF-2
109	0.5	B	P1-65	JOINT1	OR-1X2SF-2
110	0.5	B	P1-66	JOINT1	OR-1X2SF-2
111	0.5	B	P1-67	JOINT1	OR-1X2SF-2
112	0.5	B	P1-68	JOINT1	OR-1X2SF-2
113	0.5	B	P1-69	JOINT1	OR-1X2SF-2
114	0.5	B	P1-70	JOINT1	OR-1X2SF-2
115	0.5	B	P1-71	JOINT1	OR-1X2SF-2
116	0.5	B	P1-72	JOINT1	OR-1X2SF-2
117	0.5	B	P1-73	JOINT1	OR-1X2SF-2
118	0.5	B	P1-74	JOINT1	OR-1X2SF-2
119	0.5	B	P1-75	JOINT1	OR-1X2SF-2
120	0.5	B	P1-76	JOINT1	OR-1X2SF-2
121	0.5	B	P1-77	JOINT1	OR-1X2SF-2
122	0.5	B	P1-78	JOINT1	OR-1X2SF-2
123	0.5	B	P1-79	JOINT1	OR-1X2SF-2
124	0.5	B	P1-80	JOINT1	OR-1X2SF-2
125	0.5	B	P1-81	JOINT1	OR-1X2SF-2
126	0.5	B	P1-82	JOINT1	OR-1X2SF-2
127	0.5	B	P1-83	JOINT1	OR-1X2SF-2
128	0.5	B	P1-84	JOINT1	OR-1X2SF-2
129	0.5	B	P1-85	JOINT1	OR-1X2SF-2
130	0.5	B	P1-86	JOINT1	OR-1X2SF-2
131	0.5	B	P1-87	JOINT1	OR-1X2SF-2
132	0.5	B	P1-88	JOINT1	OR-1X2SF-2
133	0.5	B	P1-89	JOINT1	OR-1X2SF-2
134	0.5	B	P1-90	JOINT1	OR-1X2SF-2
135	0.5	B	P1-91	JOINT1	OR-1X2SF-2
136	0.5	B	P1-92	JOINT1	OR-1X2SF-2
137	0.5	B	P1-93	JOINT1	OR-1X2SF-2
138	0.5	B	P1-94	JOINT1	OR-1X2SF-2
139	0.5	B	P1-95	JOINT1	OR-1X2SF-2
140	0.5	B	P1-96	JOINT1	OR-1X2SF-2
141	0.5	B	P1-97	JOINT1	OR-1X2SF-2
142	0.5	B	P1-98	JOINT1	OR-1X2SF-2
143	0.5	B	P1-99	JOINT1	OR-1X2SF-2
144	0.5	B	P1-100	JOINT1	OR-1X2SF-2
145	0.5	B	P1-101	JOINT1	OR-1X2SF-2
146	0.5	B	P1-102	JOINT1	OR-1X2SF-2
147	0.5	B	P1-103	JOINT1	OR-1X2SF-2
148	0.5	B	P1-104	JOINT1	OR-1X2SF-2
149	0.5	B	P1-105	JOINT1	OR-1X2SF-2
150	0.5	B	P1-106	JOINT1	OR-1X2SF-2
151	0.5	B	P1-107	JOINT1	OR-1X2SF-2
152	0.5	B	P1-108	JOINT1	OR-1X2SF-2
153	0.5	B	P1-109	JOINT1	OR-1X2SF-2
154	0.5	B	P1-110	JOINT1	OR-1X2SF-2
155	0.5	B	P1-111	JOINT1	OR-1X2SF-2
156	0.5	B	P1-112	JOINT1	OR-1X2SF-2
157	0.5	B	P1-113	JOINT1	OR-1X2SF-2
158	0.5	B	P1-114	JOINT1	OR-1X2SF-2
159	0.5	B	P1-115	JOINT1	OR-1X2SF-2
160	0.5	B	P1-116	JOINT1	OR-1X2SF-2
161	0.5	B	P1-117	JOINT1	OR-1X2SF-2
162	0.5	B	P1-118	JOINT1	OR-1X2SF-2
163	0.5	B	P1-119	JOINT1	OR-1X2SF-2
164	0.5	B	P1-120	JOINT1	OR-1X2SF-2
165	0.5	B	P1-121	JOINT1	OR-1X2SF-2
166	0.5	B	P1-122	JOINT1	OR-1X2SF-2
167	0.5	B	P1-123	JOINT1	OR-1X2SF-2
168	0.5	B	P1-124	JOINT1	OR-1X2SF-2
169	0.5	B	P1-125	JOINT1	OR-1X2SF-2
170	0.5	B	P1-126	JOINT1	OR-1X2SF-2
171	0.5	B	P1-127	JOINT1	OR-1X2SF-2
172	0.5	B	P1-128	JOINT1	OR-1X2SF-2
173	0.5	B	P1-129	JOINT1	OR-1X2SF-2
174	0.5	B	P1-130	JOINT1	OR-1X2SF-2
175	0.5	B	P1-131	JOINT1	OR-1X2SF-2
176	0.5	B	P1-132	JOINT1	OR-1X2SF-2
177	0.5	B	P1-133	JOINT1	OR-1X2SF-2
178	0.5	B	P1-134	JOINT1	OR-1X2SF-2
179	0.5	B	P1-135	JOINT1	OR-1X2SF-2
180	0.5	B	P1-136	JOINT1	OR-1X2SF-2
181	0.5	B	P1-137	JOINT1	OR-1X2SF-2
182	0.5	B	P1-138	JOINT1	OR-1X2SF-2
183	0.5	B	P1-139	JOINT1	OR-1X2SF-2
184	0.5	B	P1-140	JOINT1	OR-1X2SF-2
185	0.5	B	P1-141	JOINT1	OR-1X2SF-2
186	0.5	B	P1-142	JOINT1	OR-1X2SF-2
187	0.5	B	P1-143	JOINT1	OR-1X2SF-2
188	0.5	B	P1-144	JOINT1	OR-1X2SF-2
189	0.5	B	P1-145	JOINT1	OR-1X2SF-2
190	0.5	B	P1-146	JOINT1	OR-1X2SF-2
191	0.5	B	P1-147	JOINT1	OR-1X2SF-2
192	0.5	B	P1-148	JOINT1	OR-1X2SF-2
193	0.5	B	P1-149	JOINT1	OR-1X2SF-2
194	0.5	B	P1-150	JOINT1	OR-1X2SF-2
195	0.5	B	P1-151	JOINT1	OR-1X2SF-2
196	0.5	B	P1-152	JOINT1	OR-1X2SF-2
197	0.5	B	P1-153	JOINT1	OR-1X2SF-2
198	0.5	B	P1-154	JOINT1	OR-1X2SF-2
199	0.5	B	P1-155	JOINT1	OR-1X2SF-2
200	0.5	B	P1-156	JOINT1	OR-1X2SF-2
201	0.5	B	P1-157	JOINT1	OR-1X2SF-2
202	0.5	B	P1-158	JOINT1	OR-1X2SF-2
203	0.5	B	P1-159	JOINT1	OR-1X2SF-2
204	0.5	B	P1-160	JOINT1	OR-1X2SF-2
205	0.5	B	P1-161	JOINT1	OR-1X2SF-2
206	0.5	B	P1-162	JOINT1	OR-1X2SF-2
207	0.5	B	P1-163	JOINT1	OR-1X2SF-2
208	0.5	B	P1-164	JOINT1	OR-1X2SF-2
209	0.5	B	P1-165	JOINT1	OR-1X2SF-2
210	0.5	B	P1-166	JOINT1	OR-1X2SF-2
211	0.5	B	P1-167	JOINT1	OR-1X2SF-2
212	0.5	B	P1-168	JOINT1	OR-1X2SF-2
213	0.5	B	P1-169	JOINT1	OR-1X2SF-2
214	0.5	B	P1-170	JOINT1	OR-1X2SF-2
215	0.5	B	P1-171	JOINT1	OR-1X2SF-2
216	0.5	B	P1-172	JOINT1	OR-1X2SF-2
217	0.5	B	P1-173	JOINT1	OR-1X2SF-2
218	0.5	B	P1-174	JOINT1	OR-1X2SF-2
219	0.5	B	P1-175	JOINT1	OR-1X2SF-2
220	0.5	B	P1-176	JOINT1	OR-1X2SF-2
221	0.5	B	P1-177	JOINT1	OR-1X2SF-2
222	0.5	B	P1-178	JOINT	

ZAXIS160-3 CLASS/180-3 CLASS CAB HARNESS

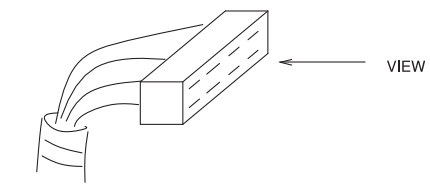
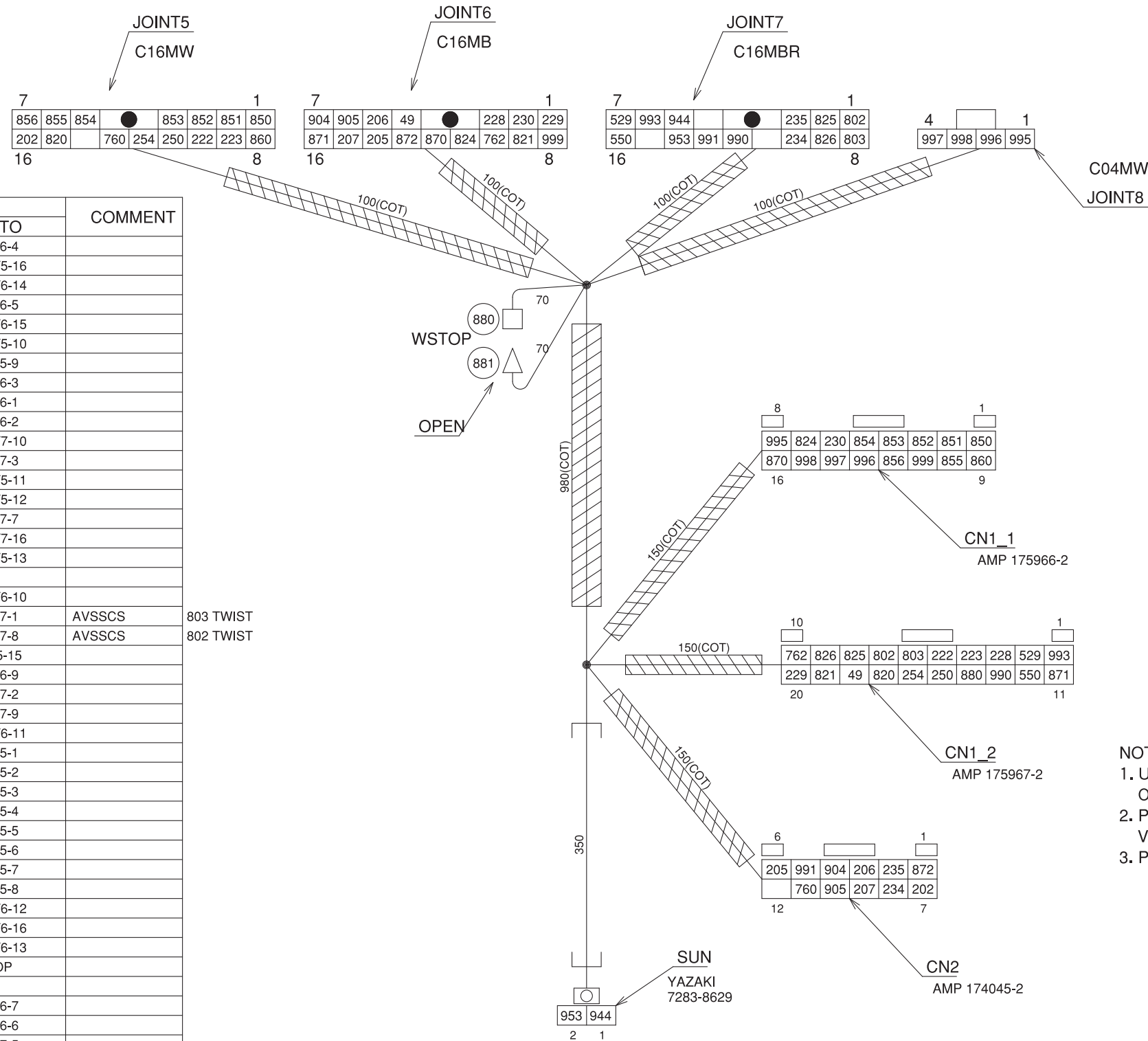
CAUTION: Parts numbers on the drawing are provided only for reference purpose. To order parts on the drawing, be sure to consult the Parts Catalog.

No.	SIZE	COL.	FROM CIRCUIT	TO CIRCUIT	COMMENT
1	1.25	R	MCF-A-1	FUSE-4	
2	1.25	R	MCF-A-12	C1	
3	0.5	LB	MCF-A-22	ENGM-1-1	
4	0.5	LR	MCF-A-16	ENGM-1-19	
5	0.5	BW	MCF-A-20	ENGM-1-2	
6	0.5	GW	MCF-A-10	ENGM-1-11	
7	0.5	RW	MCF-A-10	ENGM-1-3	
8	0.5	BW	MCF-A-6	ENGM-1-10	
9	0.5	W	MCF-A-20	ENGM-1-4	
10	0.5	G	MCF-A-29	ENGM-1-13	
11	0.5	Y	MCF-A-11	ENGM-1-5	
12	1.25	B	MCF-A-2	CAB EARTH3	
13	1.25	B	MCF-A-19	C2	
14	0.5	WG	MCF-A-17	ENGM-1-14	
15	0.5	L	MCF-A-31	ENGM-1-6	
16	0.5	R	MCF-A-4	ENGM-1-15	
17	0.5	R	MCF-A-23	ENGM-1-1	
18	0.5	YG	MCF-A-7	ENGM-1-27	
19	0.5	G	MCF-A-20	ENGM-1-3	
20	0.5	RG	MCF-A-3	ENGM-1-8	
21	0.5	WR	MCF-A-28	ENGM-1-28	
22	0.5	BR	MCF-A-8	ENGM-1-25	
23	0.5	BR	MCF-B-13	JOINT5-7	
24	0.5	BR	MCF-B-14	JOINT5-14	
25	0.5	G	MCF-B-11	JOINT5-6	
26	0.5	L	MCF-B-7	FUSE-10	
27	0.5	B	MCF-B-8	CAB EARTH3	
28	0.5	GB	MCF-B-4	JOINT5-9	
29	0.5	GB	MCF-B-7	JOINT5-9	
30	0.5	GB	MCF-B-11	OPT2-3	
31	0.5	Y	MCF-B-8	OPT2-3	
32	0.5	RY	MCF-D-7	ST-EC1-1	
33	0.5	RY	MCF-D-13	ST-EC1-2	
34	0.5	RY	MCF-D-19	ENGM-1-16	
35	0.5	RY	MCF-D-22	ENGM-1-19	
36	0.5	GY	MCF-D-4	ENGM-1-25	
37	0.5	RB	MCF-D-10	ENGM-1-4	
38	0.5	W	MCF-D-1	ST-EC1-2	
39	0.5	WG	MCF-D-11	ENGM-1-7	
40	0.5	WG	MCF-D-9	ENGM-1-17	
41	0.5	WL	MCF-D-9	ENGM-1-17	
42	0.5	WPU	MCF-D-9	ENGM-1-13	
43	0.5	YB	MCF-D-14	ENGM-1-17	
44	0.5	BR	MCF-D-13	ENGM-1-4	
45	0.5	BG	MCF-D-3	ENGM-1-12	
46	0.5	OB	MCF-D-23	ENGM-1-24	
47	0.5	Y	MCF-D-24	ENGM-1-24	
48	0.5	R	MCF-D-12	ENGM-1-24	
49	0.5	B	M1-EBR2	CAB EARTH4	
50	0.5	RB	MCF-D-2	ENGM-1-51	
51	0.5	W	MCF-D-5	ENGM-1-41	INNER OF SHIELD
52	0.5	B	MCF-D-15	ENGM-1-50	OUTER OF SHIELD
53	0.5	L	MCF-D-2	OPT2-9	
54	0.5	BR	OPT2-11	OPT2-11	
55	0.5	GB	ENGM-4-31	ENGM-4-31	
56	0.5	WB	ENGM-4-30	OPT2-8	
57	0.5	LV	ENGM-1-26	JOINT5-8	
58	0.5	R	JOINT5-2	JOINT5-4	
59	0.5	Y	JOINT5-2	JOINT5-5	
60	0.5	RW	JOINT5-11	JOINT5-15	
61	0.5	RL	ENGM-1-49	JOINT5-19	
62	0.5	GL	ENGM-1-58	JOINT5-8	
63	0.5	G	JOINT5-3	JOINT5-3	
64	0.5	GW	JOINT5-15	JOINT5-6	
65	0.5	LB	ENGM-1-36	JOINT5-2	
66	0.5	WB	ENGM-1-31	JOINT5-10	
67	0.5	YB	ENGM-1-31	JOINT5-13	
68	0.5	WB	ENGM-1-31	JOINT5-10	
69	0.5	L	MCF-D-23	ENGM-1-24	
70	0.5	Y	MCF-D-24	ENGM-1-24	
71	0.5	R	MCF-D-12	ENGM-1-24	
72	0.5	B	M1-EBR2	CAB EARTH4	
73	0.5	P	MCF-D-10	ENGM-1-4	
74	0.5	W	MCF-D-5	ENGM-1-41	INNER OF SHIELD
75	0.5	B	MCF-D-15	ENGM-1-50	OUTER OF SHIELD
76	0.5	L	MCF-D-2	OPT2-9	
77	0.5	BR	OPT2-11	OPT2-11	
78	0.5	GB	ENGM-4-31	ENGM-4-31	
79	0.5	WB	ENGM-4-30	OPT2-8	
80	0.5	LV	ENGM-1-26	JOINT5-8	
81	0.5	R	JOINT5-2	JOINT5-4	
82	0.5	Y	JOINT5-2	JOINT5-5	
83	0.5	RW	JOINT5-11	JOINT5-15	
84	0.5	RL	ENGM-1-49	JOINT5-19	
85	0.5	GL	ENGM-1-58	JOINT5-8	
86	0.5	G	JOINT5-3	JOINT5-3	
87	0.5	GW	JOINT5-15	JOINT5-6	
88	0.5	LB	ENGM-1-36	JOINT5-2	
89	0.5	WB	ENGM-1-31	JOINT5-10	
90	0.5	YB	ENGM-1-31	JOINT5-13	
91	0.5	WB	ENGM-1-31	JOINT5-10	
92	0.5	L	MCF-D-23	ENGM-1-24	
93	0.5	Y	MCF-D-24	ENGM-1-24	
94	0.5	R	MCF-D-12	ENGM-1-24	
95	0.5	B	M1-EBR2	CAB EARTH4	
96	0.5	P	MCF-D-10	ENGM-1-4	
97	0.5	W	MCF-D-5	ENGM-1-41	INNER OF SHIELD
98	0.5	B	MCF-D-15	ENGM-1-50	OUTER OF SHIELD
99	0.5	L	MCF-D-2	OPT2-9	
100	0.5	BR	OPT2-11	OPT2-11	
101	0.5	GB	ENGM-4-31	ENGM-4-31	
102	0.5	WB	ENGM-4-30	OPT2-8	
103	0.5	LV	ENGM-1-26	JOINT5-8	
104	0.5	R	JOINT5-2	JOINT5-4	
105	0.5	Y	JOINT5-2	JOINT5-5	
106	0.5	RW	JOINT5-11	JOINT5-15	
107	0.5	RL	ENGM-1-49	JOINT5-19	
108	0.5	GL	ENGM-1-58	JOINT5-8	
109	0.5	G	JOINT5-3	JOINT5-3	
110	0.5	GW	JOINT5-15	JOINT5-6	
111	0.5	LB	ENGM-1-36	JOINT5-2	
112	0.5	WB	ENGM-1-31	JOINT5-10	
113	0.5	YB	ENGM-1-31	JOINT5-13	
114	0.5	WB	ENGM-1-31	JOINT5-10	
115	0.5	L	MCF-D-23	ENGM-1-24	
116	0.5	Y	MCF-D-24	ENGM-1-24	
117	0.5	R	MCF-D-12	ENGM-1-24	
118	0.5	B	M1-EBR2	CAB EARTH4	
119	0.5	P	MCF-D-10	ENGM-1-4	
120	0.5	W	MCF-D-5	ENGM-1-41	INNER OF SHIELD
121	0.5	B	MCF-D-15	ENGM-1-50	OUTER OF SHIELD
122	0.5	L	MCF-D-2	OPT2-9	
123	0.5	BR	OPT2-11	OPT2-11	
124	0.5	GB	ENGM-4-31	ENGM-4-31	
125	0.5	WB	ENGM-4-30	OPT2-8	
126	0.5	LV	ENGM-1-26	JOINT5-8	
127	0.5	R	JOINT5-2	JOINT5-4	
128	0.5	Y	JOINT5-2	JOINT5-5	
129	0.5	RW	JOINT5-11	JOINT5-15	
130	0.5	RL	ENGM-1-49	JOINT5-19	
131	0.5	GL	ENGM-1-58	JOINT5-8	
132	0.5	G	JOINT5-3	JOINT5-3	
133	0.5	GW	JOINT5-15	JOINT5-6	
134	0.5	LB	ENGM-1-36	JOINT5-2	
135	0.5	WB	ENGM-1-31	JOINT5-10	
136	0.5	YB	ENGM-1-31	JOINT5-13	
137	0.5	WB	ENGM-1-31	JOINT5-10	
138	0.5	L	MCF-D-23	ENGM-1-24	
139	0.5	Y	MCF-D-24	ENGM-1-24	
140	0.5	R	MCF-D-12	ENGM-1-24	
141	0.5	B	M1-EBR2	CAB EARTH4	
142	0.5	P	MCF-D-10	ENGM-1-4	
143	0.5	W	MCF-D-5	ENGM-1-41	INNER OF SHIELD
144	0.5	B	MCF-D-15	ENGM-1-50	OUTER OF SHIELD
145	0.5	L	MCF-D-2	OPT2-9	
146	0.5	BR	OPT2-11	OPT2-11	
147	0.5	GB	ENGM-4-31	ENGM-4-31	
148	0.5	WB	ENGM-4-30	OPT2-8	
149	0.5	LV	ENGM-1-26	JOINT5-8	
150	0.5	R	JOINT5-2	JOINT5-4	
151	0.5	Y	JOINT5-2	JOINT5-5	
152	0.5	RW	JOINT5-11	JOINT5-15	
153	0.5	RL	ENGM-1-49	JOINT5-19	
154	0.5	GL	ENGM-1-58	JOINT5-8	
155	0.5	G	JOINT5-3	JOINT5-3	
156	0.5	GW	JOINT5-15	JOINT5-6	
157	0.5	LB	ENGM-1-36	JOINT5-2	
158	0.5	WB	ENGM-1-31	JOINT5-10	
159	0.5	YB	ENGM-1-31	JOINT5-13	
160	0.5	WB	ENGM-1-31	JOINT5-10	
161	0.5	L	MCF-D-23	ENGM-1-24	
162	0.5	Y	MCF-D-24	ENGM-1-24	
163	0.5	R	MCF-D-12	ENGM-1-24	
164	0.5	B	M1-EBR2	CAB EARTH4	
165	0.5	P	MCF-D-10	ENGM-1-4	
166	0.5	W	MCF-D-5	ENGM-1-41	INNER OF SHIELD
167	0.5	B	MCF-D-15	ENGM-1-50	OUTER OF SHIELD
168	0.5	L	MCF-D-2	OPT2-9	
169	0.5	BR	OPT2-11	OPT2-11	
170	0.5	GB	ENGM-4-31	ENGM-4-31	
171	0.5	WB	ENGM-4-30	OPT2-8	
172	0.5	LV	ENGM-1-26	JOINT5-8	
173	0.5	R	JOINT5-2	JOINT5-4	
174	0.5	Y	JOINT5-2	JOINT5-5	
175	0.5	RW	JOINT5-11	JOINT5-15	
176	0.5	RL	ENGM-1-49	JOINT5-19	
177	0.5	GL	ENGM-1-58	JOINT5-8	
178	0.5	G	JOINT5-3	JOINT5-3	
179	0.5	GW	JOINT5-15	JOINT5-6	
180	0.5	LB	ENGM-1-36	JOINT5-2	
181	0.5	WB	ENGM-1-31	JOINT5-10	
182	0.5	YB	ENGM-1-31	JOINT5-13	
183	0.5	WB	ENGM-1-31	JOINT5-10	
184	0.5	L	MCF-D-23	ENGM-1-24	
185	0.5	Y	MCF-D-24	ENGM-1-24	
186	0.5	R	MCF-D-12	ENGM-1-24	
187	0.5	B	M1-EBR2	CAB EARTH4	
188	0.5	P	MCF-D-10	ENGM-1-4	
189	0.5	W	MCF-D-5	ENGM-1-41	INNER OF SHIELD
190	0.5	B	MCF-D-15	ENGM-1-50	OUTER OF SHIELD
191	0.5	L	MCF-D-2	OPT2-9	
192	0.5	BR	OPT2-11	OPT2-11	
193	0.5	GB	ENGM-4-31	ENGM-4-31	
194	0.5	WB	ENGM-4-30	OPT2-8	
195	0.5	LV	ENGM-1-26	JOINT5-8	
196	0.5	R	JOINT5-2	JOINT5-4	
197	0.5	Y	JOINT5-2	JOINT5-5	
198	0.5	RW	JOINT5-11	JOINT5-15	
199	0.5	RL	ENGM-1-49	JOINT5-19	
200	0.5	GL	ENGM-1-58	JOINT5-8	
201	0.5	G	JOINT5-3	JOINT5-3	
202	0.5	GW	JOINT5-15	JOINT5-6	
203	0.5	LB	ENGM-1-36	JOINT5-2	
204	0.5	WB	ENGM-1-31	JOINT5-10	
205	0.5	YB	ENGM-1-31	JOINT5-13	
206	0.5	WB	ENGM-1-31	JOINT5-10	
207	0.5	L	MCF-D-23	ENGM-1-24	
208	0.5	Y	MCF-D-24	ENGM-1-24	
209	0.5	R	MCF-D-12	ENGM-1-24	
210	0.5	B	M1-EBR2	CAB EARTH4	
211	0.5	P	MCF-D-10	ENGM-1-4	
212	0.5	W	MCF-D-5	ENGM-1-41	INNER OF SHIELD
213	0.5	B	MCF-D-15	ENGM-1-50	OUTER OF SHIELD
214	0.5	L	MCF-D-2	OPT2-9	
215	0.5	BR	OPT2-11	OPT2-11	
216	0.5	GB	ENGM-4-31	ENGM-4-31	
217	0.5	WB	ENGM-4-30	OPT2-8	
218	0.5	LV	ENGM-1-26	JOINT5-8	
219	0.5	R	JOINT5-2	JOINT5-4	
220	0.5	Y	JOINT5-2	JOINT5-5	
221	0.5	RW	JOINT5-11	JOINT5-15	
222	0.5	RL	ENGM-1-49	JOINT5-19	
223	0.5	GL	ENGM-1-58	JOINT5-8	
224	0.5	G	JOINT5-3	JOINT5-3	
225	0.5	GW	JOINT5-15	JOINT5-6	
226	0.5	LB	ENGM-1-36	JOINT5-2	
227	0.5	WB	ENGM-1-31	JOINT5-10	
228	0.5	YB	ENGM-1-31	JOINT5-13	
229	0.5	WB	ENGM-1-31	JOINT5-10	
230	0.5	L	MCF-D-23	ENGM-1-24	
231	0.5	Y	MCF-D-24	ENGM-1-24	
232	0.5	R	MCF-D-12	ENGM-1-24	
233	0.5	B	M1-EBR2	CAB EARTH4	
234	0.5	P	MCF		

ZAXIS160-3 CLASS/180-3 CLASS MONITOR UNIT HARNESS

CAUTION: Parts numbers on the drawing are provided only for reference purpose.
To order parts on the drawing, be sure to consult the Parts Catalog.

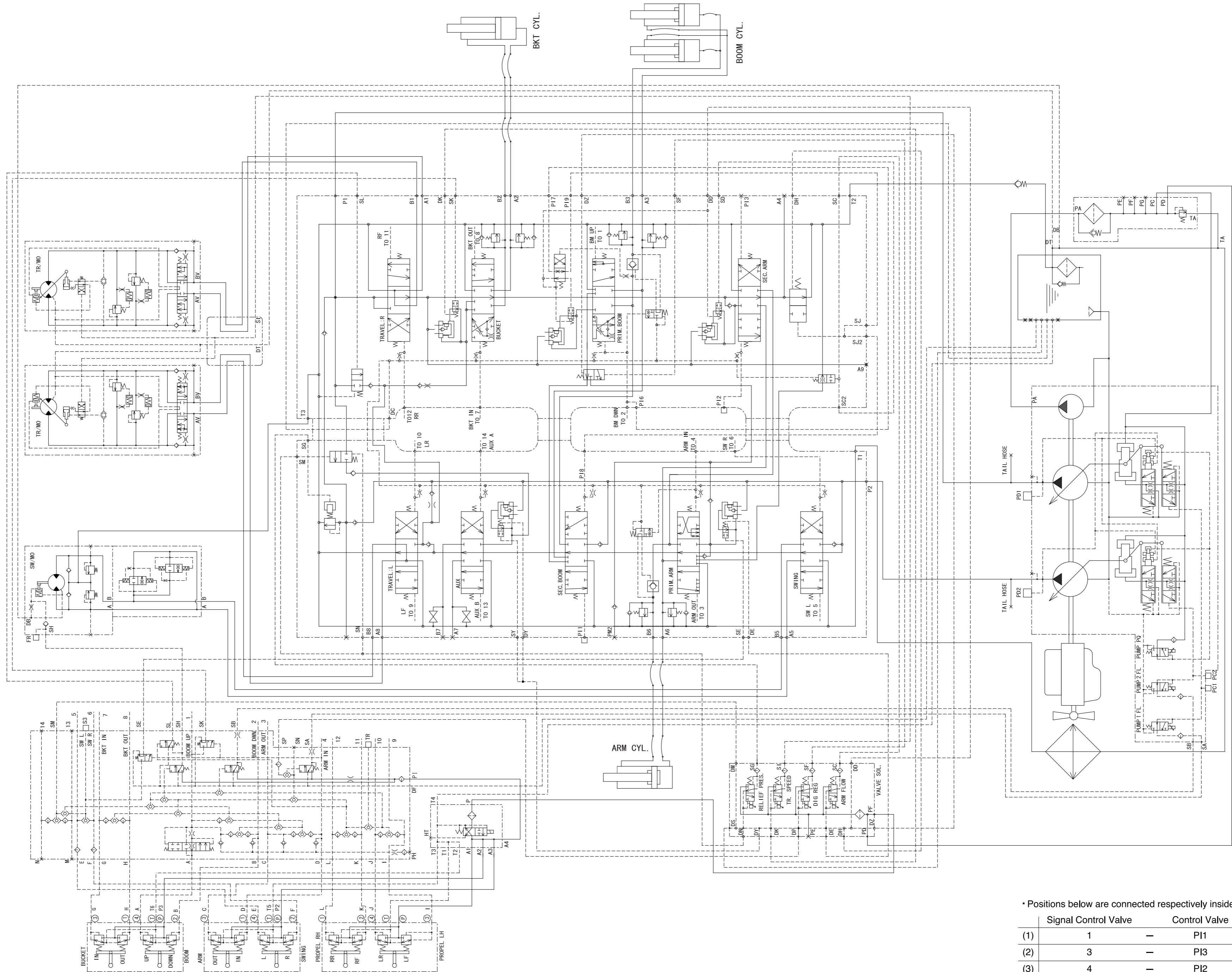
No.	SIZE	COL.	CIRCUIT		COMMENT
			FROM	TO	
49	0.3	G	CN1_2-18	JOINT6-4	
202	0.3	LY	CN2-7	JOINT5-16	
205	0.3	R	CN2-6	JOINT6-14	
206	0.3	RB	CN2-3	JOINT6-5	
207	0.3	RW	CN2-9	JOINT6-15	
222	0.3	RL	CN1_2-5	JOINT5-10	
223	0.3	GL	CN1_2-4	JOINT5-9	
228	0.3	G	CN1_2-3	JOINT6-3	
229	0.3	GW	CN1_2-20	JOINT6-1	
230	0.3	LB	CN1_1-6	JOINT6-2	
234	0.3	WB	CN2-8	JOINT7-10	
235	0.3	Br	CN2-2	JOINT7-3	
250	0.3	WL	CN1_2-15	JOINT5-11	
254	0.3	WR	CN1_2-16	JOINT5-12	
529	0.3	GB	CN1_2-2	JOINT7-7	
550	0.3	Gy	CN1_2-12	JOINT7-16	
760	0.3	WY	CN2-11	JOINT5-13	
762	0.3	G	CN1_2-10	JOINT6-10	
802	0.5	G	CN1_2-7	JOINT7-1	AVSSCS 803 TWIST
803	0.5	L	CN1_2-6	JOINT7-8	AVSSCS 802 TWIST
820	0.3	GY	CN1_2-17	JOINT5-15	
821	0.3	R	CN1_2-19	JOINT6-9	
825	0.3	R	CN1_2-8	JOINT7-2	
826	0.3	W	CN1_2-9	JOINT7-9	
824	0.3	RB	CN1_1-7	JOINT6-11	
850	0.3	G	CN1_1-1	JOINT5-1	
851	0.3	GW	CN1_1-2	JOINT5-2	
852	0.3	GB	CN1_1-3	JOINT5-3	
853	0.3	GL	CN1_1-4	JOINT5-4	
854	0.3	R	CN1_1-5	JOINT5-5	
855	0.3	B	CN1_1-10	JOINT5-6	
856	0.3	O	CN1_1-12	JOINT5-7	
860	0.3	W	CN1_1-9	JOINT5-8	
870	0.3	LB	CN1_1-16	JOINT6-12	
871	0.3	B	CN1_2-11	JOINT6-16	
872	0.3	WB	CN2-1	JOINT6-13	
880	0.5	YL	CN1_2-14	WSTOP	
881	0.5	BL	WSTOP	(871)	
904	0.3	BrW	CN2-4	JOINT6-7	
905	0.3	WY	CN2-10	JOINT6-6	
944	0.3	BrL	SUN-1	JOINT7-5	
953	0.3	RB	SUN-2	JOINT7-14	
990	0.3	YR	CN1_2-13	JOINT7-12	
991	0.3	LY	CN2-5	JOINT7-13	
993	0.3	GR	CN1_2-1	JOINT7-6	
995	0.3	R	CN1_1-8	JOINT8-1	
996	0.3	B	CN1_1-13	JOINT8-2	
997	0.5	B	CN1_1-14	JOINT8-4	APEXSP-1A OUTER
998	0.5	W	CN1_1-15	JOINT8-3	APEXSP-1A INNER
999	0.5	GW	CN1_1-11	JOINT6-8	



NOTE
 1. UNDER 1.25 WIRE MAY BE CAVS WIRE, IF NO COMMENT.
 OVER 2 WIRE MAY BE AVS WIRE.
 2. PIN ARRANGEMENTS OF THIS DRAWING INDICATE VIEW POINTS FROM THE OTHER SIDE CONNECTORS.
 3. PUT THE PART NO. LABEL ON THE HARNESS.

ZAXIS160-3 CLASS HYDRAULIC CIRCUIT DIAGRAM

NOTE: Refer to the PERFORMANCE STANDARD in the technical manual for the relief valve pressure setting value.



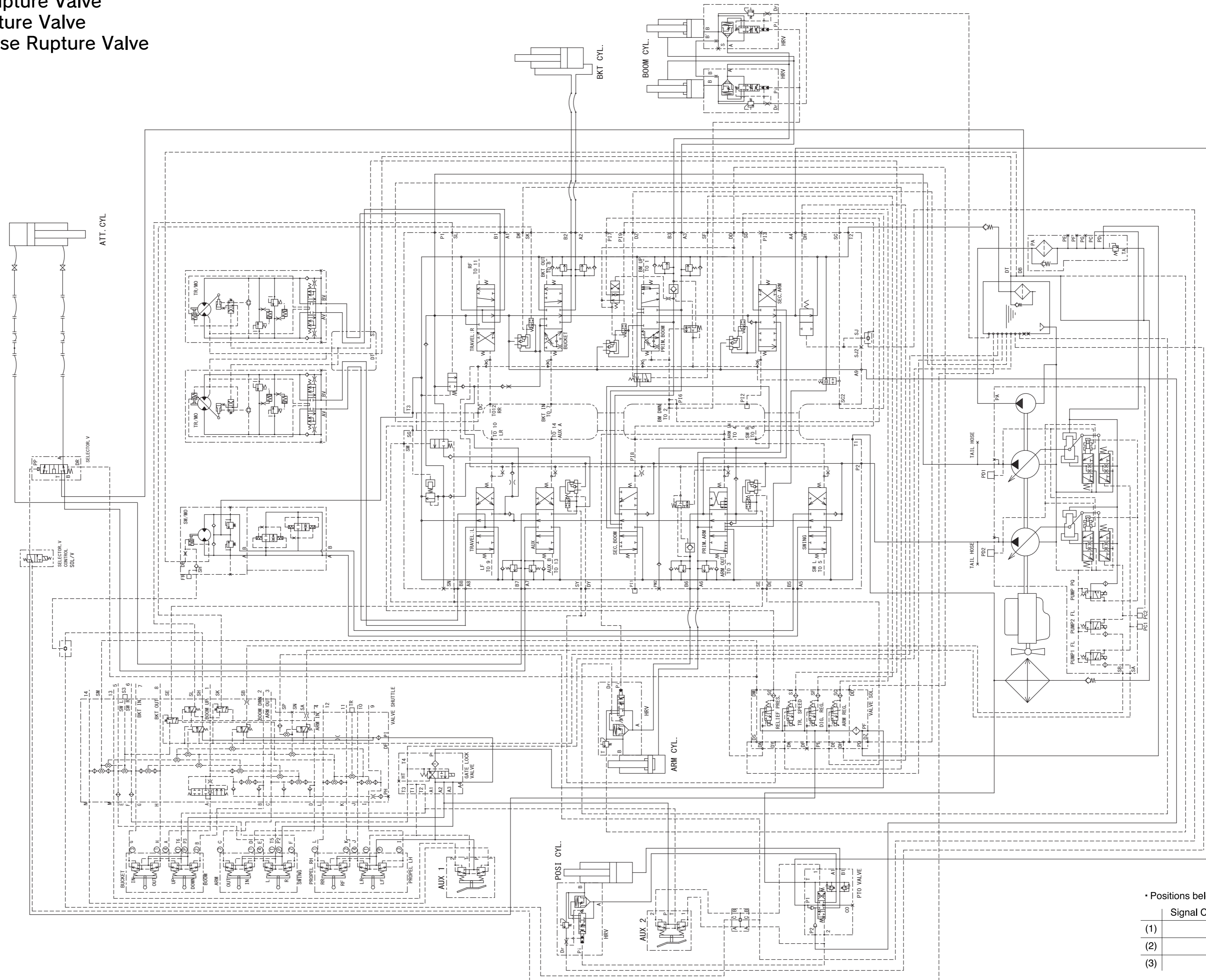
	Signal Control Valve	Control Valve
(1)	1	P11
(2)	3	P13
(3)	4	P12

ZAXIS160-3 CLASS HYDRAULIC CIRCUIT DIAGRAM

SPECIFICATIONS

- 2-Piece Boom
- Boom Hose Rupture Valve
- Arm Hose Rupture Valve
- Positioning Hose Rupture Valve

NOTE: Refer to the PERFORMANCE STANDARD in the technical manual for the relief valve pressure setting value.



• Positions below are connected respectively inside.

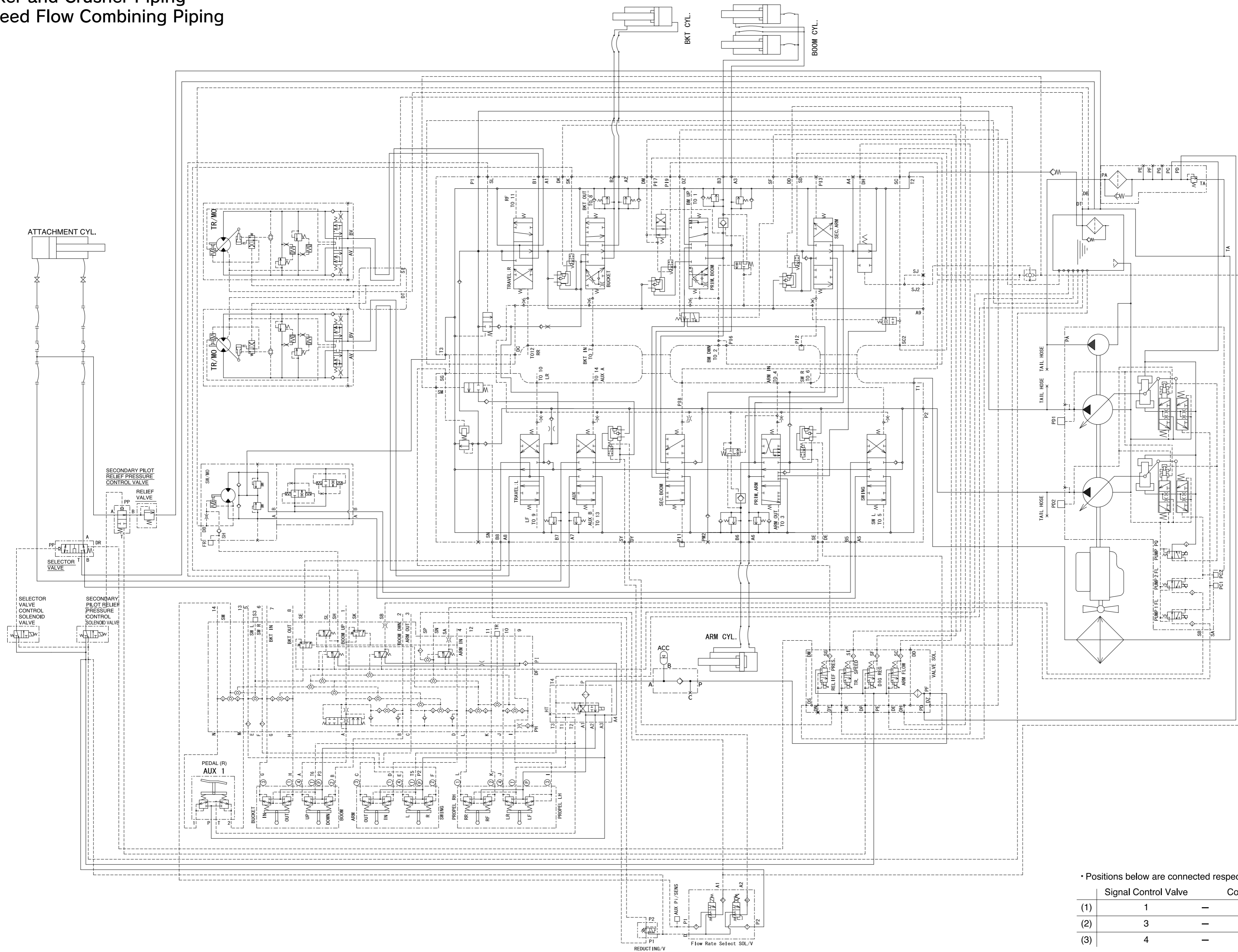
	Signal Control Valve	Control Valve	
(1)	1	-	PI1
(2)	3	-	PI3
(3)	4	-	PI2

ZAXIS160-3 CLASS HYDRAULIC CIRCUIT DIAGRAM

SPECIFICATIONS

- Breaker and Crusher Piping
- 2-Speed Flow Combining Piping

NOTE: Refer to the PERFORMANCE STANDARD in the technical manual for the relief valve pressure setting value.

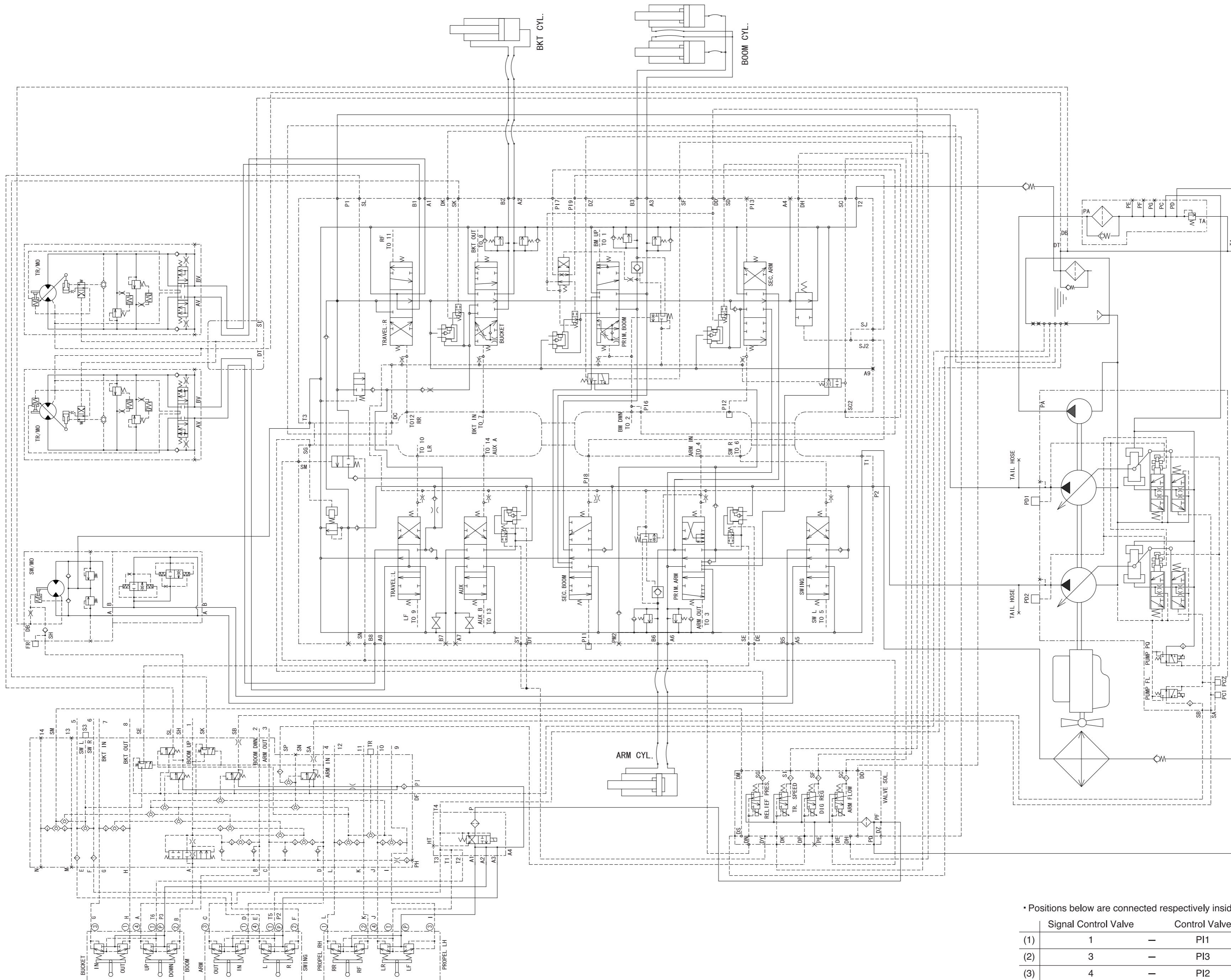


• Positions below are connected respectively inside.

	Signal Control Valve		Control Valve
(1)	1	—	PI1
(2)	3	—	PI3
(3)	4	—	PI2

ZAXIS180-3 CLASS HYDRAULIC CIRCUIT DIAGRAM

NOTE: Refer to the PERFORMANCE STANDARD in the technical manual for the relief valve pressure setting value.



• Positions below are connected respectively inside.

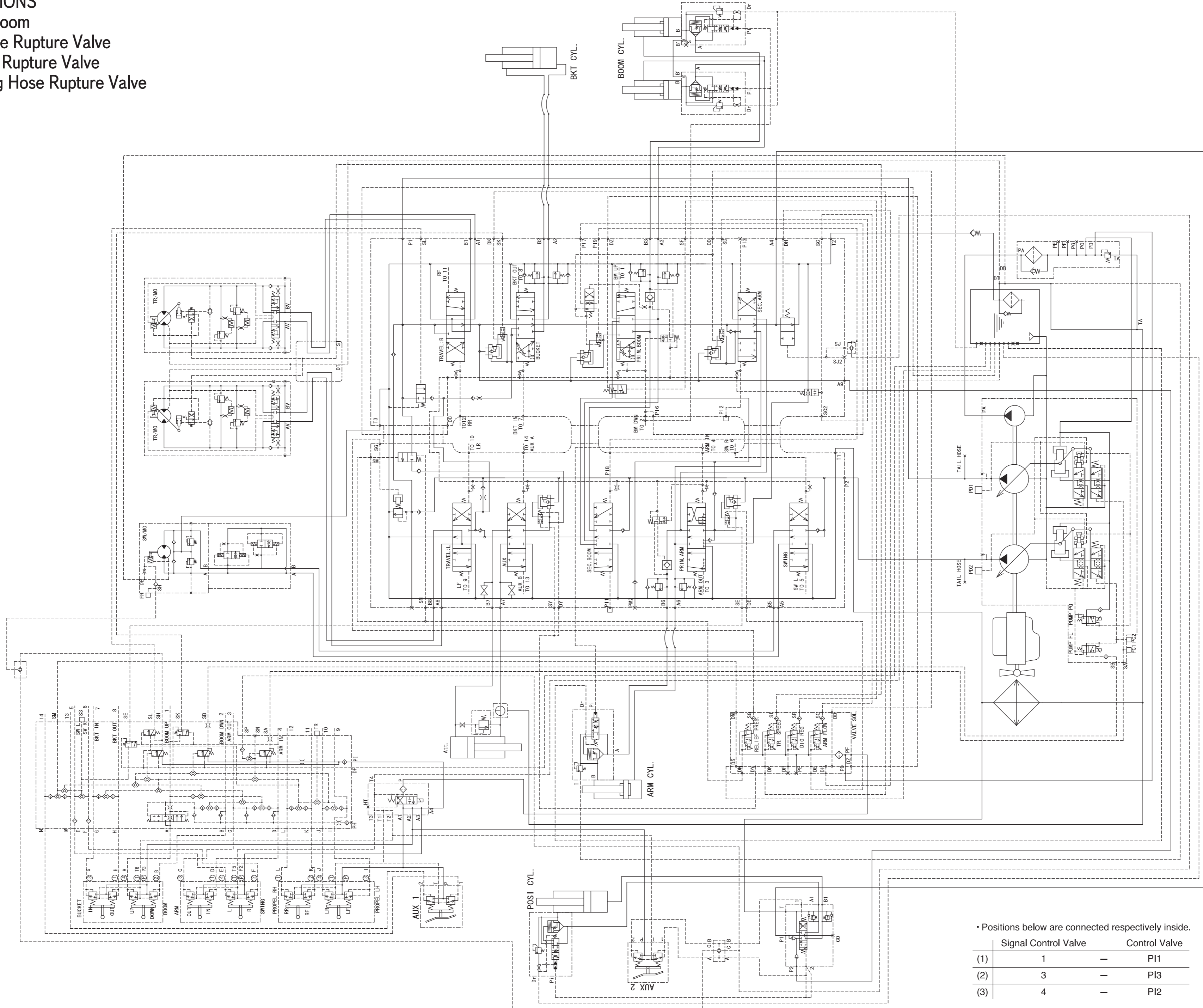
	Signal Control Valve	Control Valve
(1)	1	P11
(2)	3	PI3
(3)	4	PI2

ZAXIS180-3 CLASS HYDRAULIC CIRCUIT DIAGRAM

SPECIFICATIONS

- 2-Piece Boom
- Boom Hose Rupture Valve
- Arm Hose Rupture Valve
- Positioning Hose Rupture Valve

NOTE: Refer to the PERFORMANCE STANDARD in the technical manual for the relief valve pressure setting value.



• Positions below are connected respectively inside.

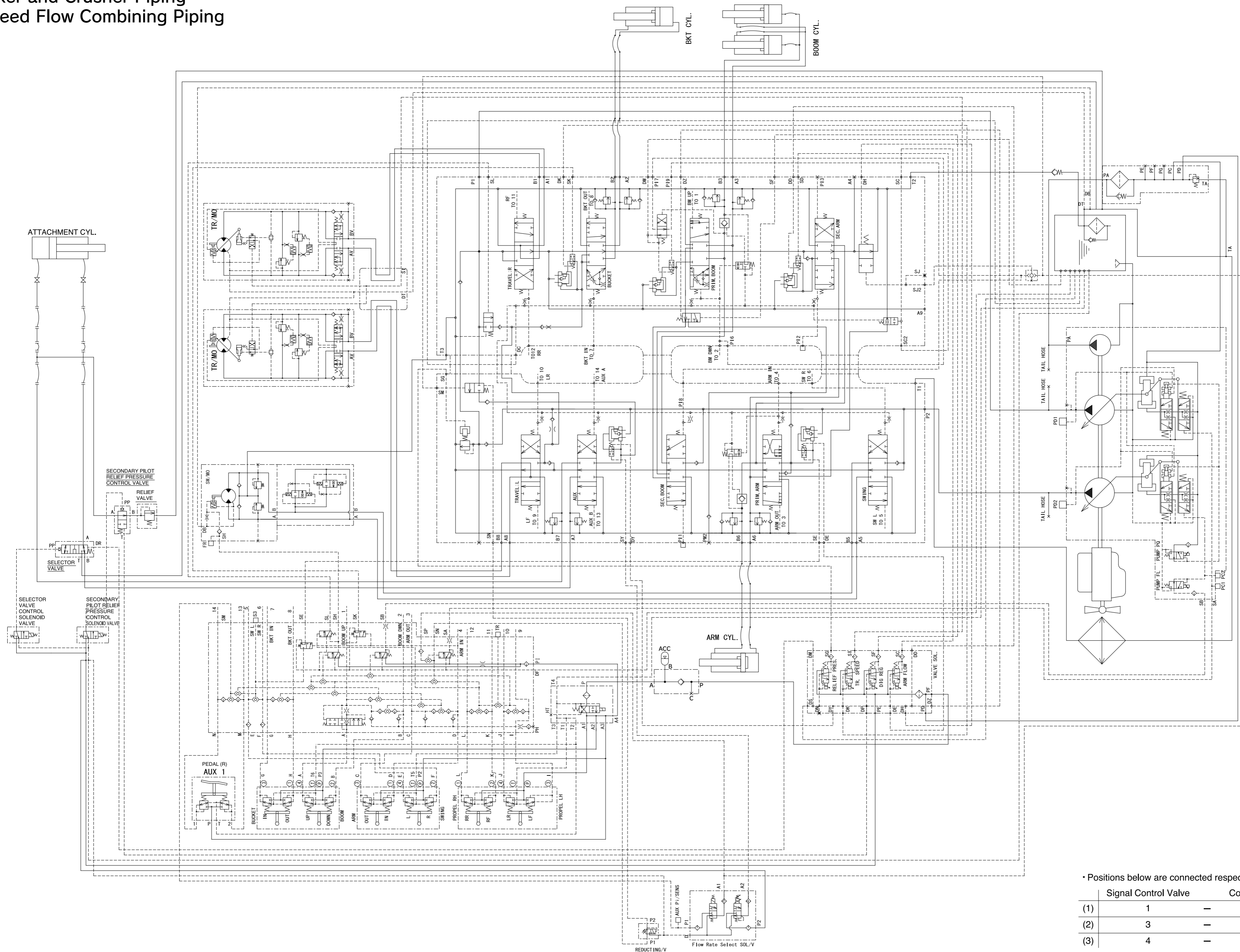
	Signal Control Valve	Control Valve
(1)	1	P11
(2)	3	P13
(3)	4	P12

ZAXIS180-3 CLASS HYDRAULIC CIRCUIT DIAGRAM

SPECIFICATIONS

- Breaker and Crusher Piping
- 2-Speed Flow Combining Piping

NOTE: Refer to the PERFORMANCE STANDARD in the technical manual for the relief valve pressure setting value.



• Positions below are connected respectively inside.

	Signal Control Valve	Control Valve
(1)	1	PI1
(2)	3	PI3
(3)	4	PI2